



Chipsmall Limited consists of a professional team with an average of over 10 year of expertise in the distribution of electronic components. Based in Hongkong, we have already established firm and mutual-benefit business relationships with customers from,Europe,America and south Asia,supplying obsolete and hard-to-find components to meet their specific needs.

With the principle of “Quality Parts,Customers Priority,Honest Operation,and Considerate Service”,our business mainly focus on the distribution of electronic components. Line cards we deal with include Microchip,ALPS,ROHM,Xilinx,Pulse,ON,Everlight and Freescale. Main products comprise IC,Modules,Potentiometer,IC Socket,Relay,Connector.Our parts cover such applications as commercial,industrial, and automotives areas.

We are looking forward to setting up business relationship with you and hope to provide you with the best service and solution. Let us make a better world for our industry!



## Contact us

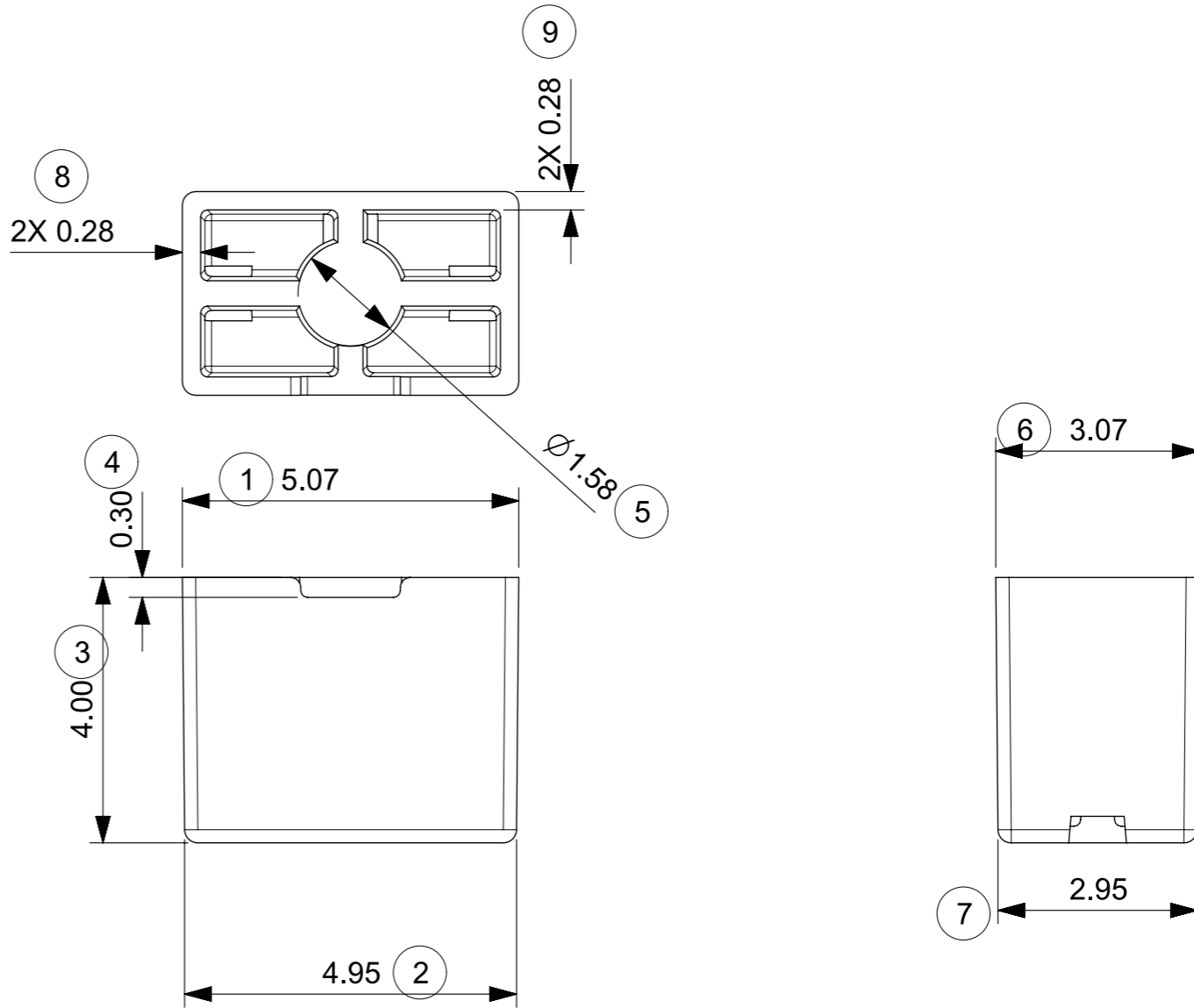
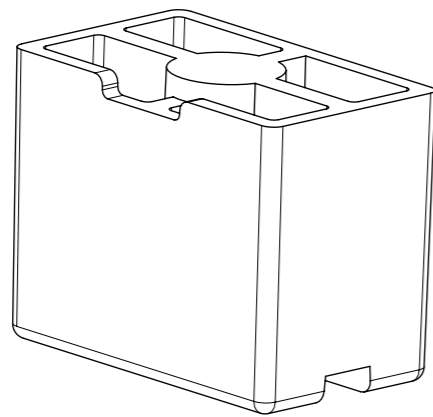
Tel: +86-755-8981 8866 Fax: +86-755-8427 6832

Email & Skype: info@chipsmall.com Web: www.chipsmall.com

Address: A1208, Overseas Decoration Building, #122 Zhenhua RD., Futian, Shenzhen, China



MOLEX					CUSTOMER			DRAWING LOCATION	CHANGE DESCRIPTION	AFFECTED DEPT
DRAWING NO.	REV	ECN NO.	DATA	P/N	P/N	3D REV	2D REV			
SD-146235-001	A	103508	2016/04/05	1462350001				NEW RELEASE	AQP/ME/RF/PE/POP	
SD-146235-001	A1	104141	2016/04/11	1462350001				UPDATE FORMAT	AQP/ME/RF/PE/POP	



NOTE:  
 1. MATERIAL :LCP-LDS, VECTRA E840ILDS, 40% MINERAL FILLED LASER DIRECT STRUCTURING GRADE,UL94V-0;  
 2.GENERAL TOLERANCE :+/-0.05MM  
 3.PRODUCT COMPLANT TO ROHS DIERTIVE 2002/95/EC AND ELV DIRECTIVE2000/53/EC

QUALITY SYMBOLS	THIS DRAWING CONTAINS INFORMATION THAT IS PROPRIETARY TO MOLEX INCORPORATED AND SHOULD NOT BE USED WITHOUT WRITTEN PERMISSION										
	EC DESCRIPTION EC NO: 104141 DRWN: TZHOU07 CHK'D: Jack Shi APPR: Chris Yu	GENERAL TOLERANCES (UNLESS SPECIFIED)		DIMENSION UNITS	SCALE						
ANGULAR TOL $\pm 0.5^\circ$		mm	10:1								
$\nabla_A = 0$		4 PLACES $\pm 0.00000$	DRWN BY	DATE	HOUSING FOR HELIX SMT ON GROND ANTENNA  PRODUCT CUSTOMER DRAWING						
$\nabla_E = 0$		3 PLACES $\pm 0.00000$	TZHOU07	2016/04/11							
$\nabla_F = 0$		2 PLACES $\pm 0.0000$	CHK'D BY	DATE							
$\blacktriangledown = 0$		1 PLACE $\pm 0.00$	Jack Shi	2016/04/11	SERIES: 146235 MATERIAL NUMBER: 1462350001 CUSTOMER: GENERAL MARKET						
$\nabla_C = 0$		0 PLACES $\pm 0.00$	APPR BY	DATE							
$\boxtimes = 0$		DRAFT WHERE APPLICABLE MUST REMAIN WITHIN DIMENSIONS		DRAWING SIZE	THIRD ANGLE PROJECTION	DOCUMENT NUMBER: SD-146235-001 DOC TYPE: PSD DOC PART: 000 SHEET NUMBER: 1 OF 3					
$\blacksquare = 0$				A3							
$\nabla = 0$		REV	A1								

RELEASE STATUS	RELEASE DATE
----------------	--------------

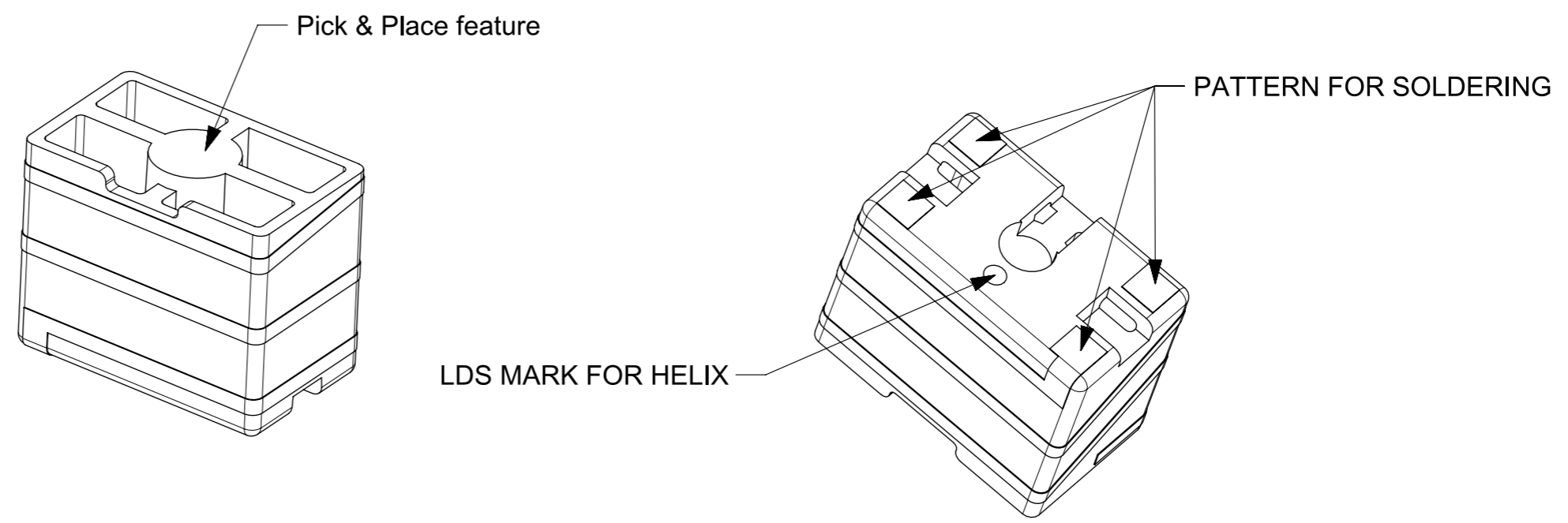
E

D

C

B

A



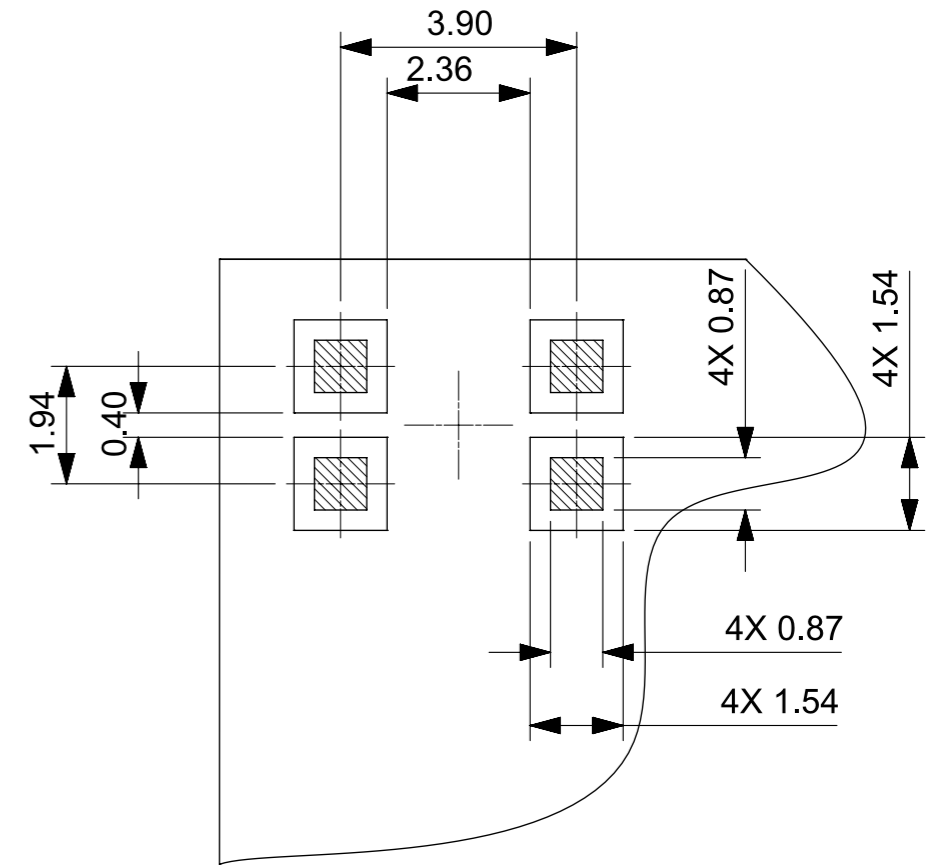
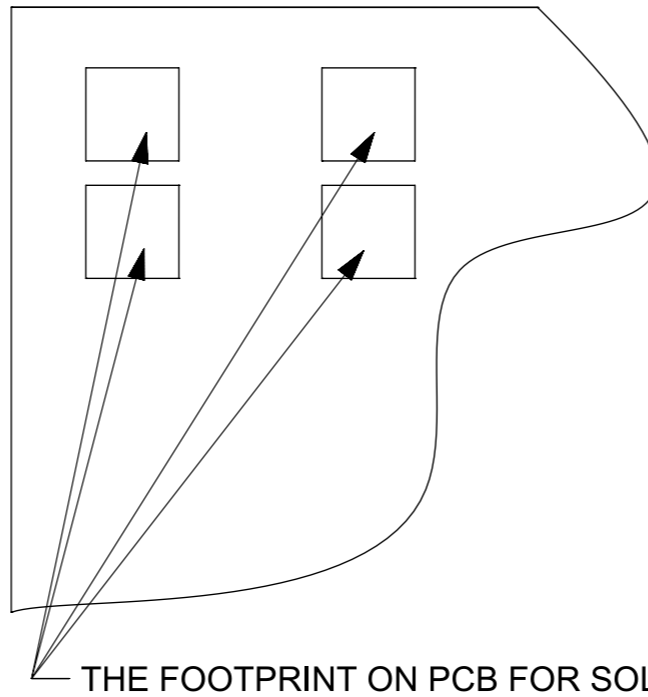
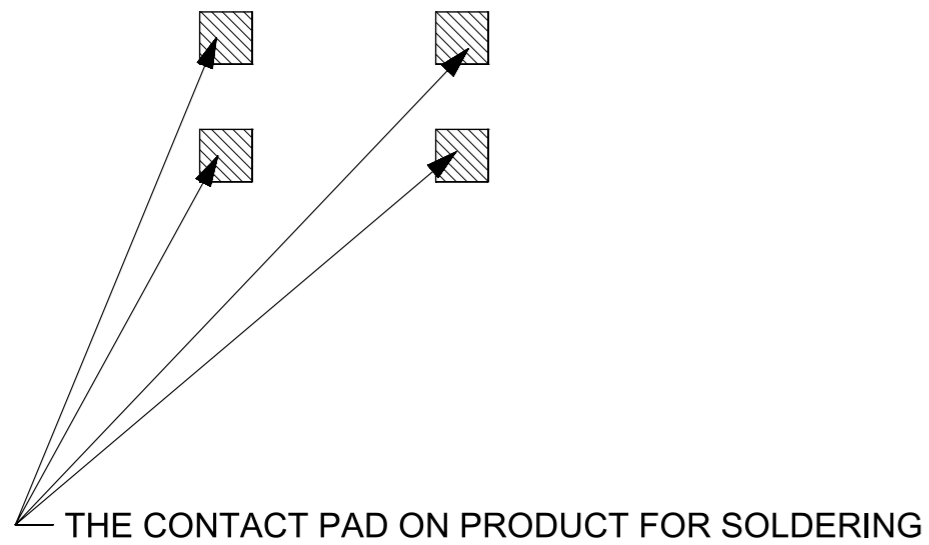
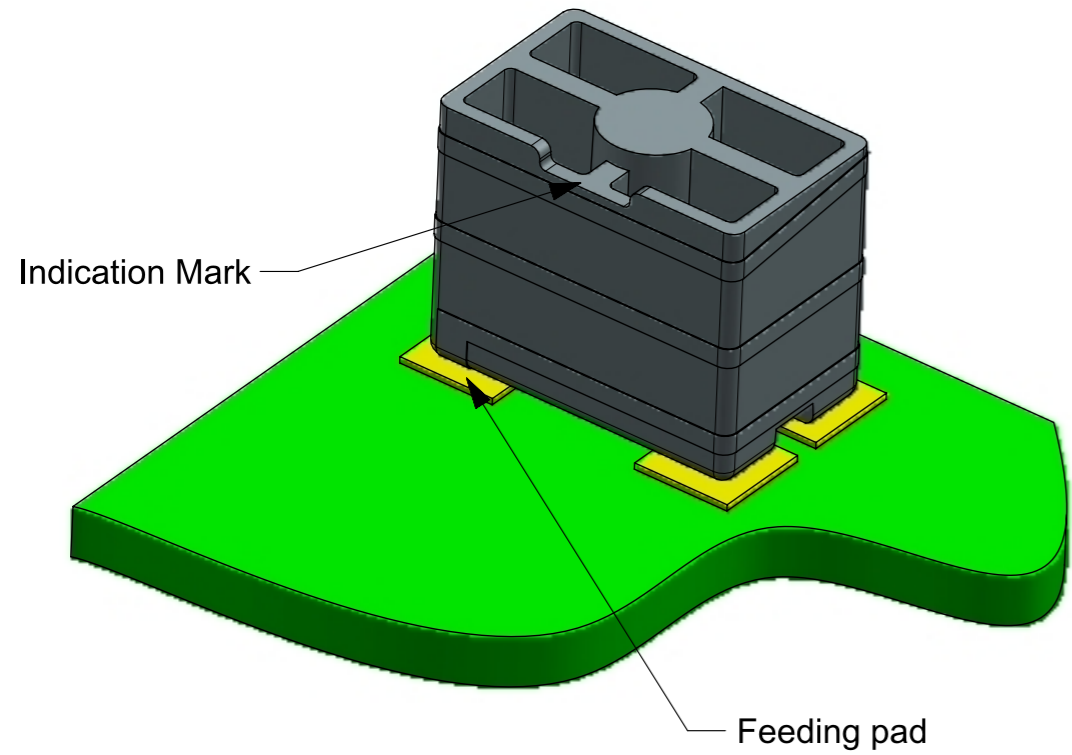
**Notes:**

- 1. PLATING SPEC:  
 Cu: 10-14 UM;  
 Ni: 1-2.5 UM;  
 Au: 0.05 UM MINIMUM
- 2. OVER FLOWING OF PATTERN PROFILE AFTER PLATING:0.03UM MAXIMUM.

THIS DRAWING CONTAINS INFORMATION THAT IS PROPRIETARY TO MOLEX INCORPORATED AND SHOULD NOT BE USED WITHOUT WRITTEN PERMISSION											
QUALITY SYMBOLS ▽ = 0 ▽ = 0 ▽ = 0 ▼ = 0 ▽ = 0 ☒ = 0 ■ = 0 ▽ = 0	EC DESCRIPTION		GENERAL TOLERANCES (UNLESS SPECIFIED)		DIMENSION UNITS		SCALE				
	EC NO: 104141 DRWN: TZHOU07 CHK'D: Jack Shi APPR: Chris Yu		2016/04/11 2016/04/11 2016/04/11		mm		10:1				
	A1		ANGULAR TOL ± 0.5 °		DRWN BY		DATE		PATTERN FOR HELIX SMT ON GROND ANTENNA		
	REV		4 PLACES ± 0.0000		TZHOU07		2016/04/11				
			3 PLACES ± 0.0000		CHK'D BY		DATE		PRODUCT CUSTOMER DRAWING		
			2 PLACES ± 0.000		Jack Shi		2016/04/11				
			1 PLACE ± 0.00		APPR BY		DATE		SERIES MATERIAL NUMBER CUSTOMER 146235 1462350001 GENERAL MARKET		
			0 PLACES ± 0.00		Chris Yu		2016/04/11				
			DRAFT WHERE APPLICABLE MUST REMAIN WITHIN DIMENSIONS		DRAWING SIZE		THIRD ANGLE PROJECTION		DOCUMENT NUMBER DOC TYPE DOC PART SHEET NUMBER SD-146235-001 PSD 000 2 OF 3		
					A3						

RELEASE STATUS	RELEASE DATE
----------------	--------------





THE FOOTPRINT ON PCB FOR SOLDERING

RECOMMENDED PCB PATTERN LAYOUT

THIS DRAWING CONTAINS INFORMATION THAT IS PROPRIETARY TO MOLEX INCORPORATED AND SHOULD NOT BE USED WITHOUT WRITTEN PERMISSION											
QUALITY SYMBOLS	EC NO: 104141 DRWN: TZHOU07 CHK'D: Jack Shi APPR: Chris Yu	GENERAL TOLERANCES (UNLESS SPECIFIED)		DIMENSION UNITS	SCALE						
		ANGULAR TOL ± 0.5 °		mm	1:1						
▽ = 0	EC DESCRIPTION EC NO: 104141 DRWN: TZHOU07 CHK'D: Jack Shi APPR: Chris Yu	4 PLACES ± 0.00000	DRWN BY	DATE		FOOTPRINT FOR HELIX SMT ON GROND ANTENNA					
▽ = 0		3 PLACES ± 0.00000	TZHOU07	2016/04/11							
▽ = 0		2 PLACES ± 0.0000	CHK'D BY	DATE		PRODUCT CUSTOMER DRAWING					
▼ = 0		1 PLACE ± 0.00	Jack Shi	2016/04/11							
▽ = 0		0 PLACES ± 0.00	APPR BY	DATE		SERIES	MATERIAL NUMBER	CUSTOMER			
☒ = 0		DRAFT WHERE APPLICABLE MUST REMAIN WITHIN DIMENSIONS	Chris Yu	2016/04/11		146235	1462350001	GENERAL MARKET			
■ = 0			DRAWING SIZE	THIRD ANGLE PROJECTION		DOCUMENT NUMBER		DOC TYPE	DOC PART	SHEET NUMBER	
▽ = 0			A3			SD-146235-001		PSD	000	3 OF 3	

RELEASE STATUS	RELEASE DATE
----------------	--------------