



Chipsmall Limited consists of a professional team with an average of over 10 year of expertise in the distribution of electronic components. Based in Hongkong, we have already established firm and mutual-benefit business relationships with customers from,Europe,America and south Asia,supplying obsolete and hard-to-find components to meet their specific needs.

With the principle of “Quality Parts,Customers Priority,Honest Operation,and Considerate Service”,our business mainly focus on the distribution of electronic components. Line cards we deal with include Microchip,ALPS,ROHM,Xilinx,Pulse,ON,Everlight and Freescale. Main products comprise IC,Modules,Potentiometer,IC Socket,Relay,Connector.Our parts cover such applications as commercial,industrial, and automotives areas.

We are looking forward to setting up business relationship with you and hope to provide you with the best service and solution. Let us make a better world for our industry!



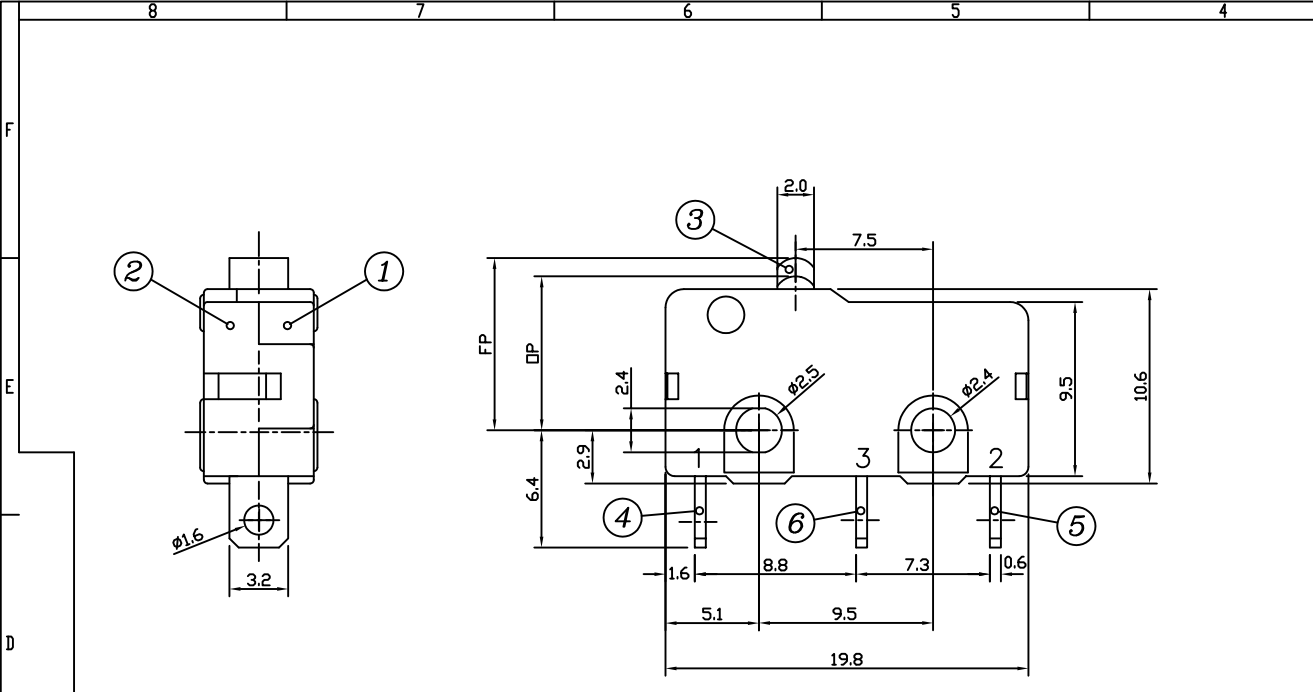
Contact us

Tel: +86-755-8981 8866 Fax: +86-755-8427 6832

Email & Skype: info@chipsmall.com Web: www.chipsmall.com

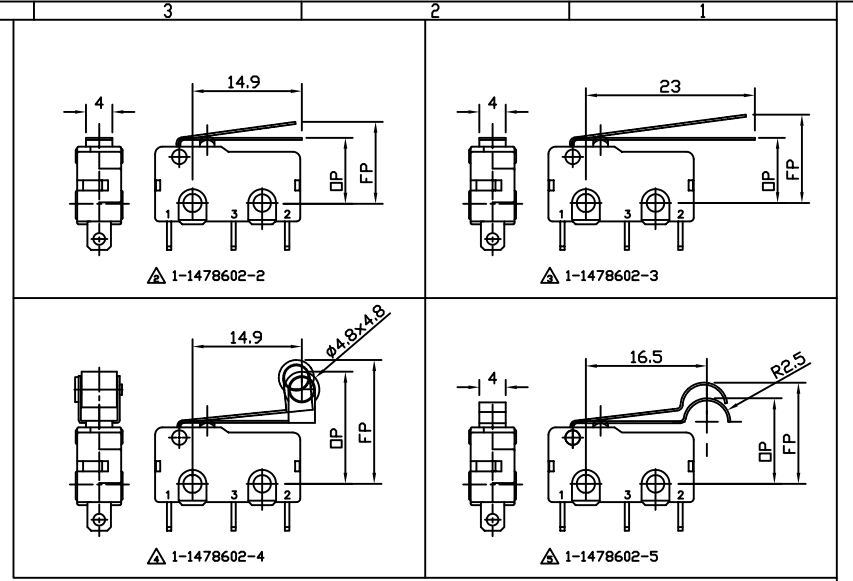
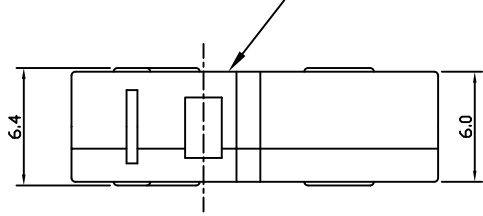
Address: A1208, Overseas Decoration Building, #122 Zhenhua RD., Futian, Shenzhen, China



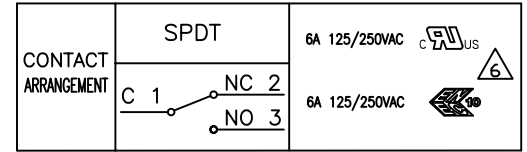


△ 1-1478602-1

TE LOGO AND PART NUMBER MARKED IN THIS AREA



SPECIFICATIONS	
Rating	6A 125/250V AC
Contact Resistance	50 mΩ max.
Insulation Resistance	100 MΩ min. DC500V
Dielectric Strength	1000V AC 1 minute
Mechanical Life	1,000,000 cycles
Electrical Life	50,000 cycles @6A 250V, resistive load
Operating Temperature Range	-40°C to +125°C RH 85% max.
Soldering Temperature	260 ± 5°C 3sec



7	CONTACT	Ag ALLOY	
6	TERMINAL	BRASS SILVER PLATED	
5	TERMINAL	BRASS SILVER PLATED	
4	TERMINAL	BRASS SILVER PLATED	
3	BUTTON	PBT RESIN	BLACK
2	COVER	PBT RESIN	GREY
1	BASE	PBT RESIN	GREY
PART NO:	PART NAME:	MATERIAL/SURFACE:	OPTIONAL DESCRIPTION

△ VDE/ENEC APPROVAL IN PROGRESS

TE SALES PART No.	TE PART NO	DESCRIPTION	CHARACTERISTICS						△
			Operating Force	Releasing Force min	Pre Travel max	Operating Position	Over Travel min	Movement Differential max	
SP6DTAOLE	1-1478602-1	Microswitch, Pin Plunger	160 ±30 g	35 g	0,6 mm	8,4 ±0,3 mm	0,5 mm	0,2 mm	△
SP6DTANLE	1-1478602-2	Microswitch, Norm Lever	45 ±15 g	8 g	3,0 mm	9,4 ±1,0 mm	1,0 mm	1,0 mm	△
SP6DTALLE	1-1478602-3	Microswitch, Long Lever	25 ±10 g	5 g	3,7 mm	10,0 ±1,5 mm	1,5 mm	1,5 mm	△
SP6DTANRE	1-1478602-4	Microswitch, Norm Roller	40 ±15 g	8 g	2,5 mm	15,0 ±0,8 mm	1,0 mm	1,0 mm	△
SP6DTASME	1-1478602-5	Microswitch, Simu Roller	45 ±15 g	10 g	2,6 mm	10,8 ±0,8 mm	1,0 mm	1,0 mm	△

PART LIST				DIMENSIONS: mm			
test dimen / Prüfmaß				auxiliary dimen / Hilfsmaß () ; theor. dimen / theor. Maß			
production control dimen / Fertigungskontrollmaß () ; dimen for measure. technology / messtechn. rel. Maß ()							
DEPARTMENT	DATE	DRAWN	CHECKED	DATE	DATE	DATE	DATE
	27-03-08						

SCALE:	NAME:	DATE:	DATE:	DATE:	DATE:	DATE:	DATE:
TOLERANCES UNLESS OTHERWISE SPECIFIED		MICRO SWITCH 6A 160g RANGE		SOLDER TERMINAL		DVG NO: C-1478602	
x ±0,5mm						OPTIONAL NO:	
xx ±0,2mm							
xxx ±0,1mm							
REPLACEMENT FOR:	DVG LDC NO:	IF SHEET:	1	OF 1	REVISION:	R	A 2

THIS DRAWING IS A CONTROLLED DOCUMENT, HANDWRITTEN CHANGES ARE NOT ALLOWED

THIS INFORMATION IS CONFIDENTIAL AND PROPRIETARY TO TYCO ELECTRONICS AUSTRIA GMBH AND ITS AFFILIATES. IT MAY NOT BE DISCLOSED TO ANYONE, INCLUDING PERSONNEL, WITHOUT WRITTEN AUTHORIZATION FROM TYCO ELECTRONICS AUSTRIA.