



Chipsmall Limited consists of a professional team with an average of over 10 year of expertise in the distribution of electronic components. Based in Hongkong, we have already established firm and mutual-benefit business relationships with customers from,Europe,America and south Asia,supplying obsolete and hard-to-find components to meet their specific needs.

With the principle of “Quality Parts,Customers Priority,Honest Operation,and Considerate Service”,our business mainly focus on the distribution of electronic components. Line cards we deal with include Microchip,ALPS,ROHM,Xilinx,Pulse,ON,Everlight and Freescale. Main products comprise IC,Modules,Potentiometer,IC Socket,Relay,Connector.Our parts cover such applications as commercial,industrial, and automotives areas.

We are looking forward to setting up business relationship with you and hope to provide you with the best service and solution. Let us make a better world for our industry!



Contact us

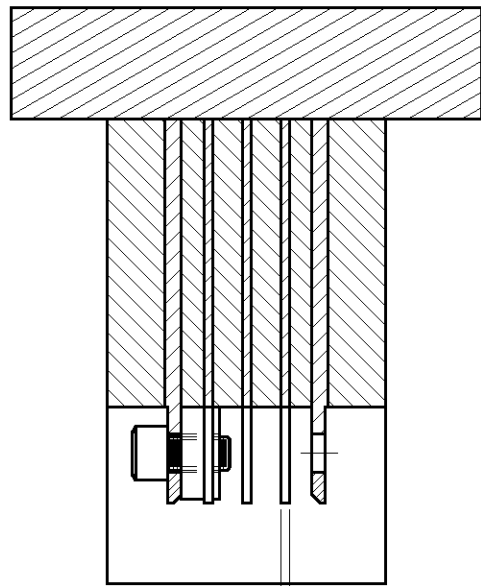
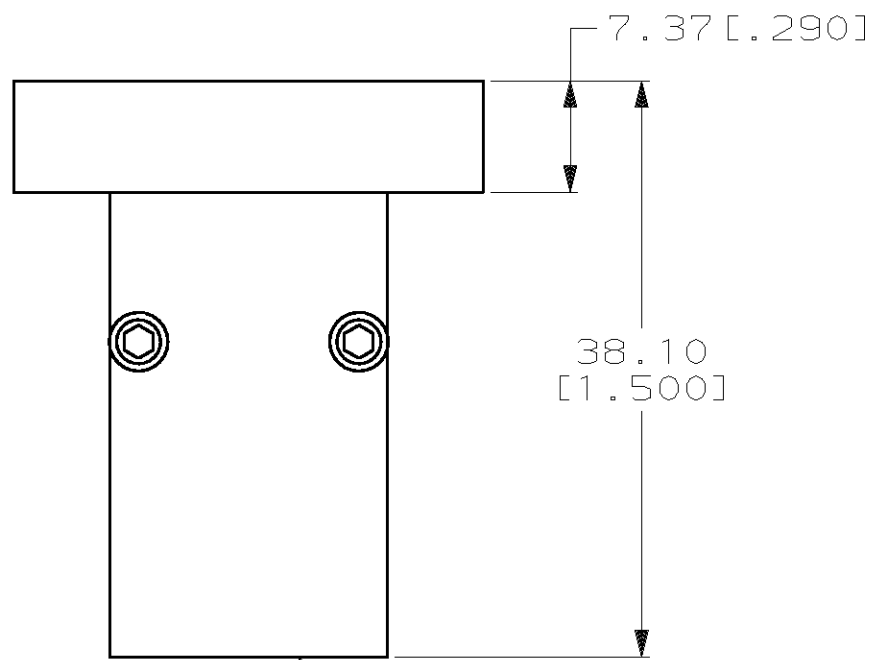
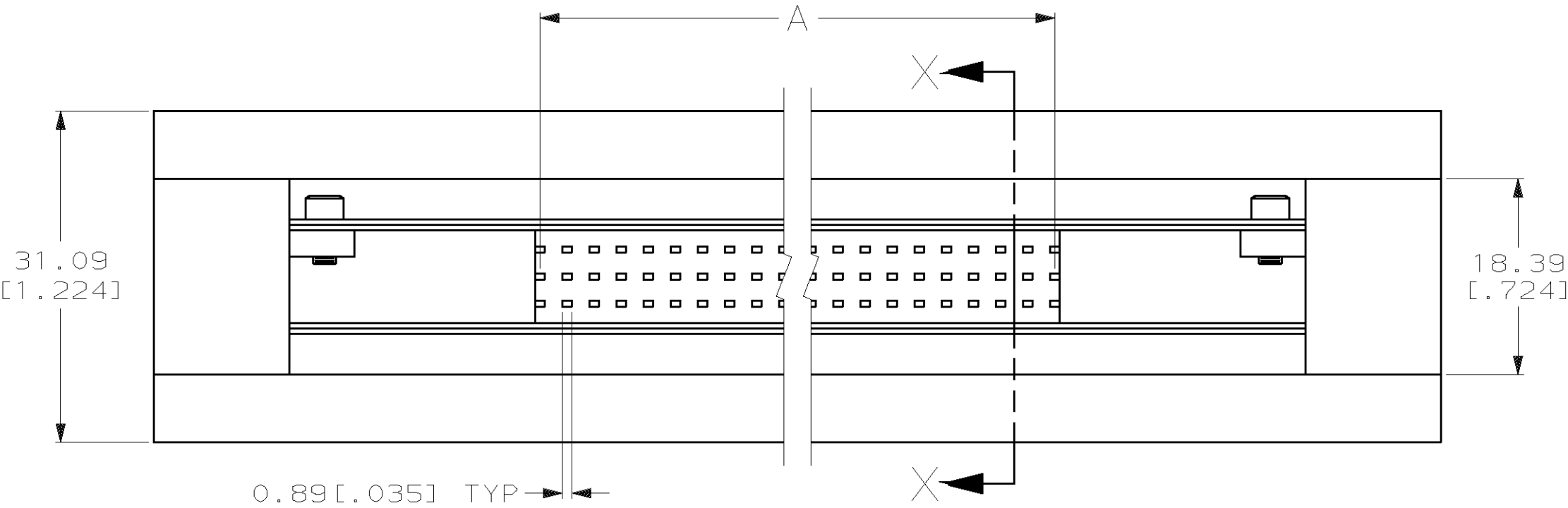
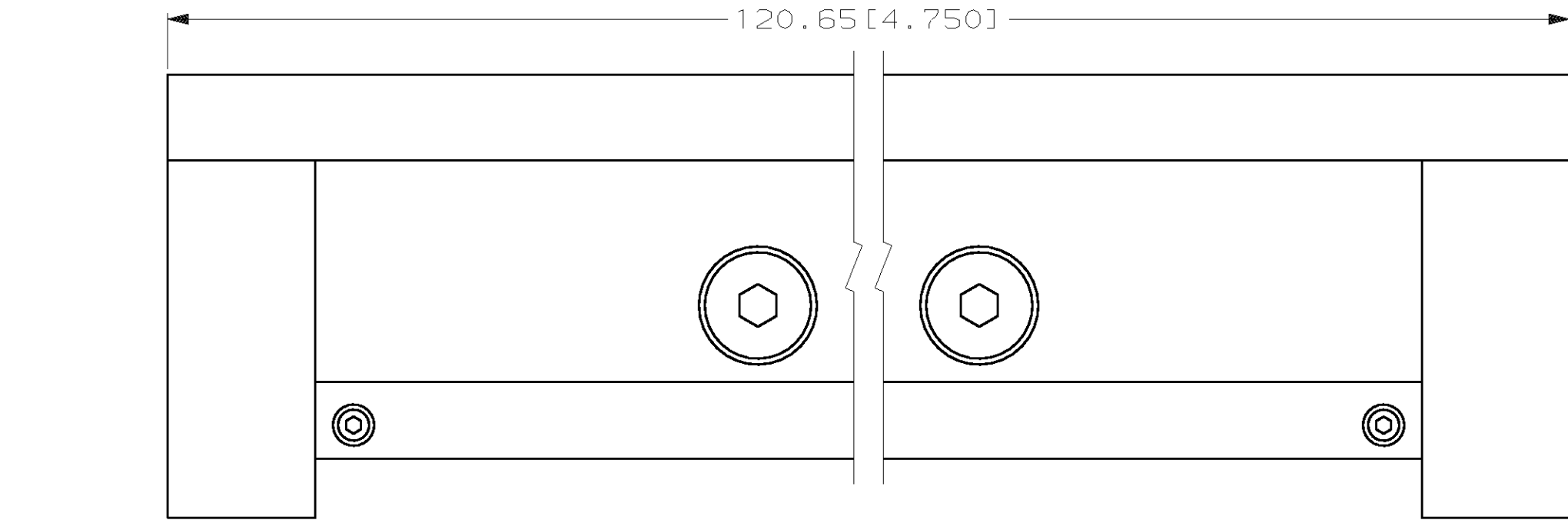
Tel: +86-755-8981 8866 Fax: +86-755-8427 6832

Email & Skype: info@chipsmall.com Web: www.chipsmall.com

Address: A1208, Overseas Decoration Building, #122 Zhenhua RD., Futian, Shenzhen, China



LOC	DIST	P	F	REVISIONS				
				ZONE	LTR	DESCRIPTION	DATE	APPD
AD	25				A	EC 0010-0264-96	2/28/96	RAP
					B	EC 0010-0949-96	7/9/96	RAP
					C	REV PER EC 0512-0016-03	27MAY03	NN



SECTION X-X
ROTATED 90° CW

17.78 [.700]	M24 x 8	148090-4 OBSELETE
33.02 [1.300]	M42 x 6	148090-3
48.26 [1.900]	M60 x 4	148090-2 OBSELETE
63.50 [2.500]	M78 x 2	148090-1 OBSELETE
A	TYPE	PART NUMBER

DO NOT SCALE PRINT. UNLESS SPECIFIED DIMENSIONS IN mm [INCHES]. TOLERANCES ON : 2 PLC DEC ± 0.13[.005] 3 PLC DEC ± - ANGLES ± -	DR L. BRINER 8/17/94	AMP INCORPORATED Harrisburg, Pa. 17105
	CHK R. PATTERSON 8/19/94	
	APPD R. PATTERSON 8/19/94	
	APPD R. PATTERSON 8/19/94	
MATERIAL STABILIZER: LEXAN OTHER PARTS: STEEL	PRODUCT SPEC	NAME INSERTION TOOL, RECEPTACLE, EUROCARD, TYPE M
FINISH -	APPLICATION SPEC	
	WEIGHT -	

SIZE C	FSCM NO 00779	DRAWING NO 148090
SCALE 2:1		SHEET 1 OF 1