



Chipsmall Limited consists of a professional team with an average of over 10 year of expertise in the distribution of electronic components. Based in Hongkong, we have already established firm and mutual-benefit business relationships with customers from,Europe,America and south Asia,supplying obsolete and hard-to-find components to meet their specific needs.

With the principle of "Quality Parts,Customers Priority,Honest Operation,and Considerate Service",our business mainly focus on the distribution of electronic components. Line cards we deal with include Microchip,ALPS,ROHM,Xilinx,Pulse,ON,Everlight and Freescale. Main products comprise IC,Modules,Potentiometer,IC Socket,Relay,Connector.Our parts cover such applications as commercial,industrial, and automotives areas.

We are looking forward to setting up business relationship with you and hope to provide you with the best service and solution. Let us make a better world for our industry!



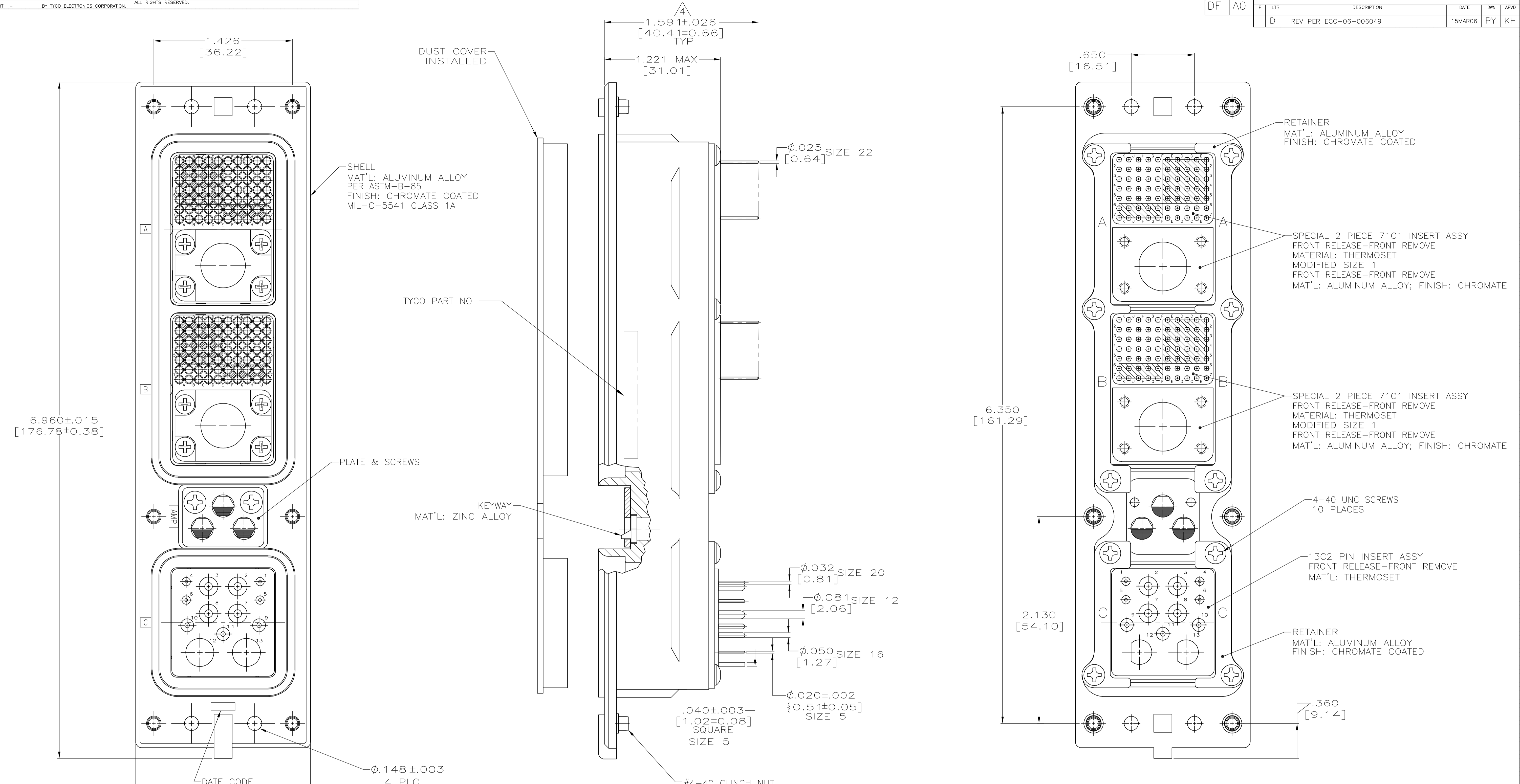
Contact us

Tel: +86-755-8981 8866 Fax: +86-755-8427 6832

Email & Skype: info@chipsmall.com Web: www.chipsmall.com

Address: A1208, Overseas Decoration Building, #122 Zhenhua RD., Futian, Shenzhen, China





05	MODULE A & B 211431-6 (SIZE 22) MODULE C P/N 2-448138-6 (SIZE 20) (QTY=4) P/N 448139-6 (SIZE 16) (QTY=3) P/N 448140-6 (SIZE 12) (QTY=4) P/N 1484201-3 (SIZE 5) (QTY=2)	1484613-2
05	MODULE A & B 211431-6 (SIZE 22) MODULE C P/N 2-448138-6 (SIZE 20) (QTY=4) P/N 448139-6 (SIZE 16) (QTY=3) P/N 448140-6 (SIZE 12) (QTY=4) P/N 1484201-3 (SIZE 5) (QTY=1)	1484613-1
KEYING POSITION	CONTACTS INCLUDED AND INSTALLED	PART NUMBER

- CONNECTOR DIMENSIONS ARE PER ARINC 600 SPECIFICATION.
- CONNECTOR IS SUPPLIED WITH CONTACTS (PER TABLE) ASSEMBLED AS SHOWN.
- KEYING SHOWN IN POSITION "01" FOR ILLUSTRATION ONLY. CONNECTORS SHIPPED WITH KEYING INSTALLED IN POSITION PER TABLE. FOR POSITION "00" KEYING HARDWARE SHIPPED UNASSEMBLED.
- WITH CONTACT FULLY SEATED IN CAVITY.
- SIZE 1 COAX CONTACTS NOT INCLUDED, MUST BE ORDERED SEPARATELY

THIS DRAWING IS A CONTROLLED DOCUMENT.

DIMENSIONS: INCHES	TOLERANCES UNLESS OTHERWISE SPECIFIED:	0 PLC ± -	1 PLC ± -	2 PLC ± -	3 PLC ± .005	4 PLC ± -	ANGLES ± -
--------------------	--	-----------	-----------	-----------	--------------	-----------	------------

APPROVED: S. GLATFELTER
 DATE: 10-24-02
 NAME: S. GLATFELTER
 PRODUCT SPEC: RCPT ASSY, SIZE 2, ARINC 600
 APPLICATION SPEC: -
 SIZE: A1
 CAGE CODE: 00779
 DRAWING NO: 1484613
 WEIGHT: -
 CUSTOMER DRAWING: -
 SCALE: 2:1
 SHEET: 1 OF 1
 REV: D