



Chipsmall Limited consists of a professional team with an average of over 10 year of expertise in the distribution of electronic components. Based in Hongkong, we have already established firm and mutual-benefit business relationships with customers from,Europe,America and south Asia,supplying obsolete and hard-to-find components to meet their specific needs.

With the principle of “Quality Parts,Customers Priority,Honest Operation,and Considerate Service”,our business mainly focus on the distribution of electronic components. Line cards we deal with include Microchip,ALPS,ROHM,Xilinx,Pulse,ON,Everlight and Freescale. Main products comprise IC,Modules,Potentiometer,IC Socket,Relay,Connector.Our parts cover such applications as commercial,industrial, and automotives areas.

We are looking forward to setting up business relationship with you and hope to provide you with the best service and solution. Let us make a better world for our industry!



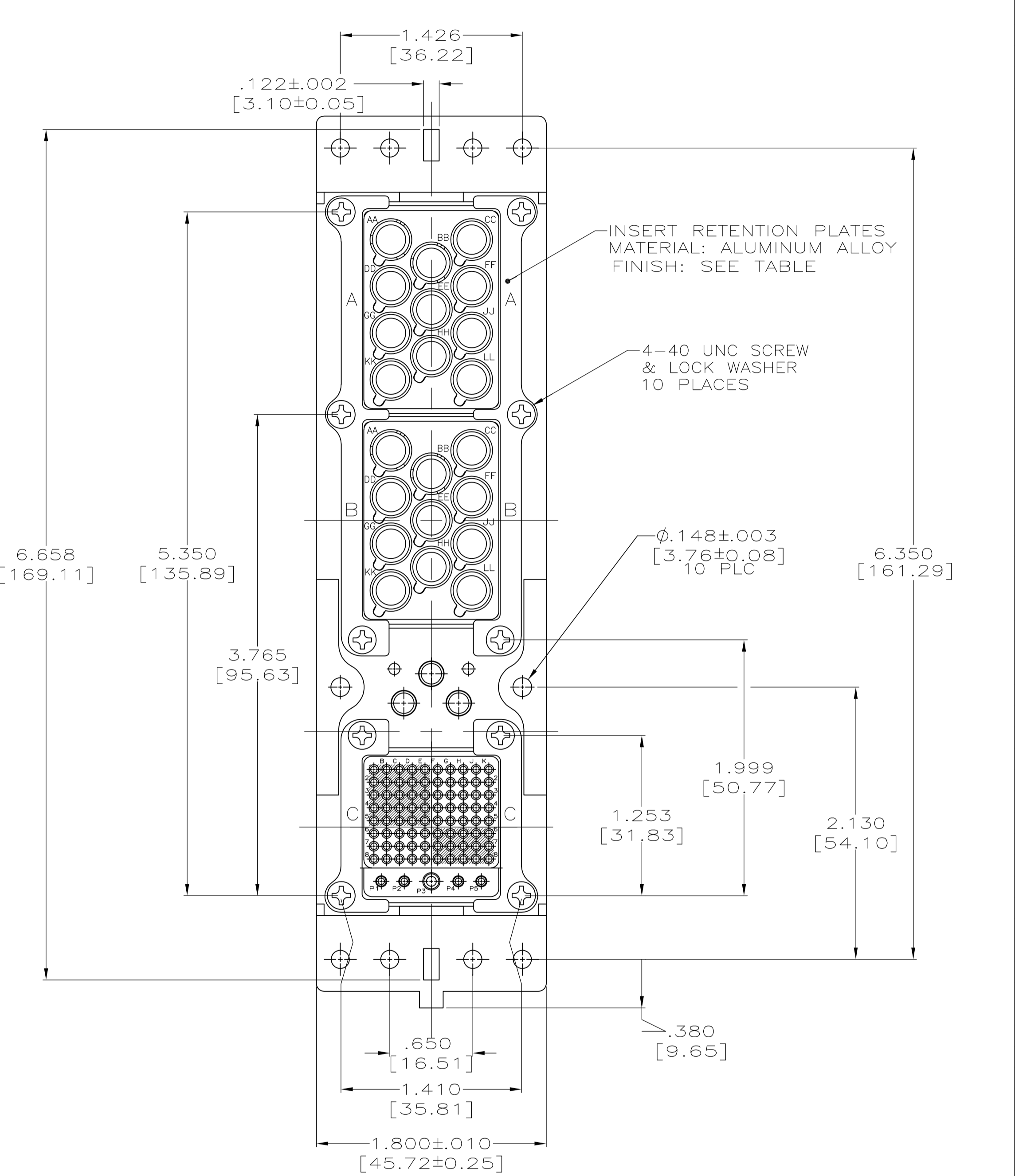
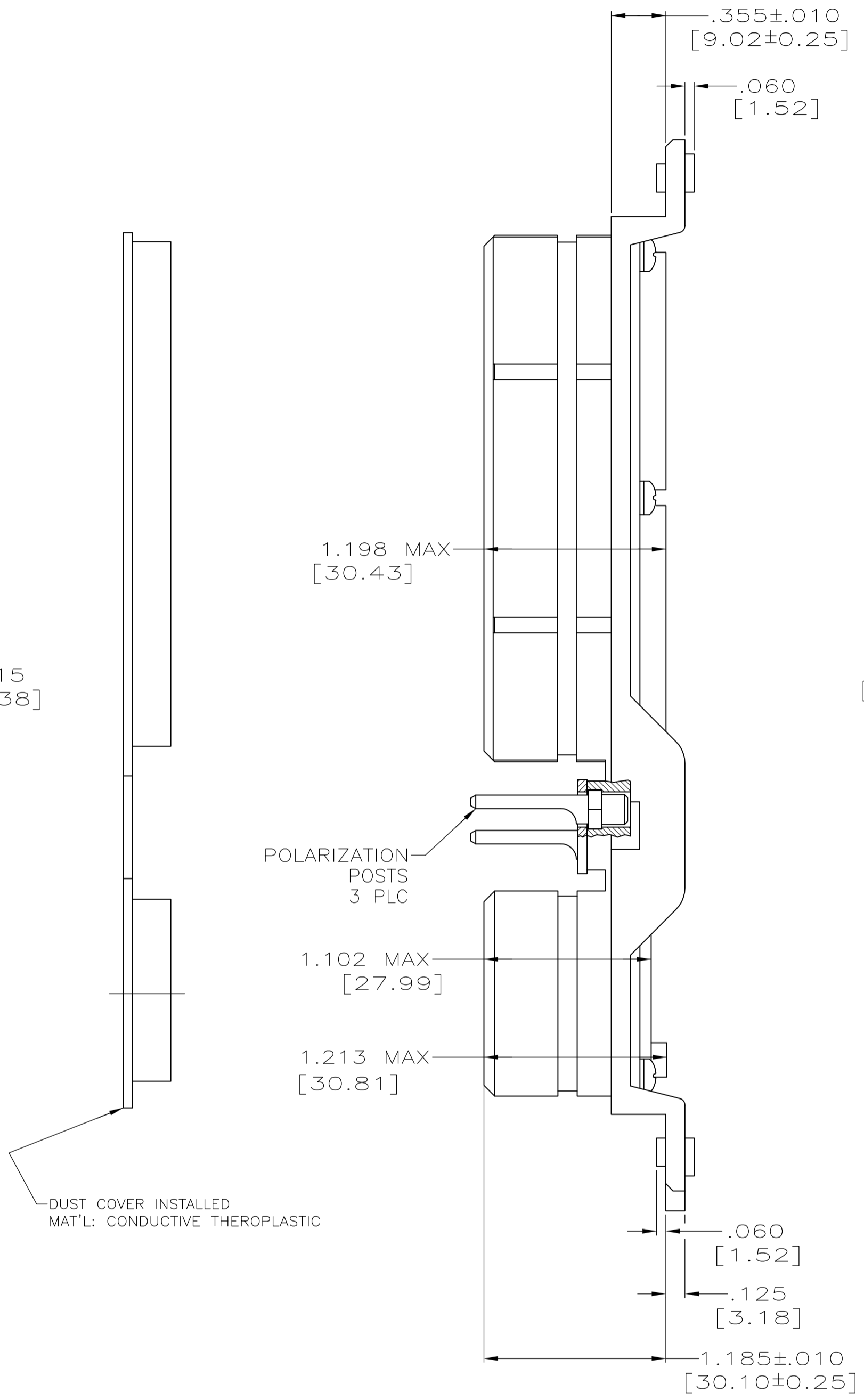
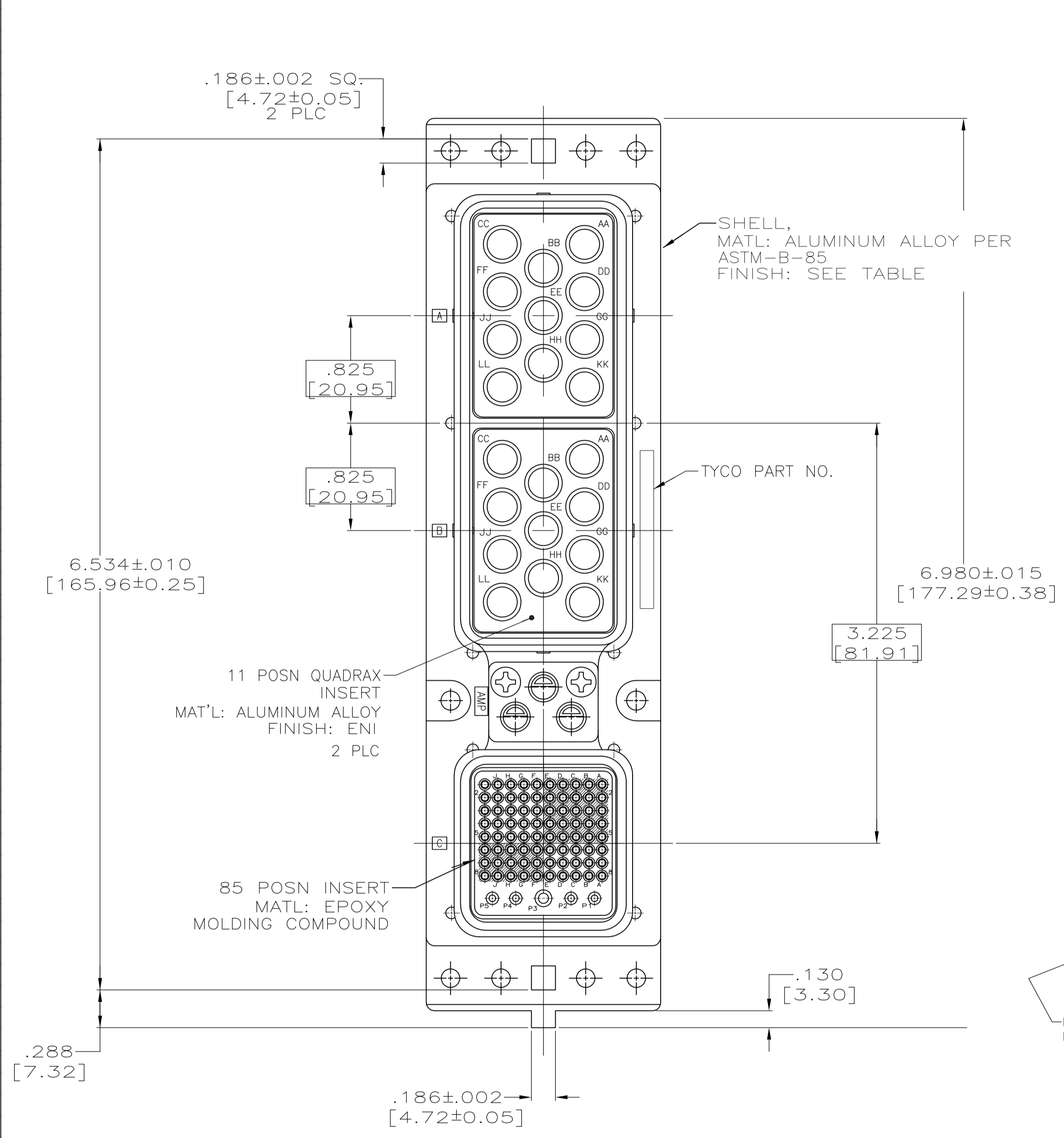
## Contact us

Tel: +86-755-8981 8866 Fax: +86-755-8427 6832

Email & Skype: info@chipsmall.com Web: www.chipsmall.com

Address: A1208, Overseas Decoration Building, #122 Zhenhua RD., Futian, Shenzhen, China





- CONNECTOR DIMENSIONS ARE PER ARINC 600 SPECIFICATIONS UNLESS OTHERWISE SPECIFIED.
- POLARIZING POSTS SHOWN IN POSITION "01" FOR ILLUSTRATION ONLY. CONNECTORS SHIPPED WITH KEYING INSTALLED IN POSITION PER TABLE.

CHROMATE COATED	01	MODULE A & B SIZE 8 QUADRAX 1445693-1 (22) MODULE C: SIZE 22 208262-3 (80) SIZE 20: 208267-2 (4) SIZE 16: 208270-2 (1)	1484621-2	
<b>OBSOLETE</b>	ELECTROLESS NICKEL	22	MODULE A & B SIZE 8 QUADRAX 1445693-1 (22) MODULE C: SIZE 22 208262-3 (80) SIZE 20: 208267-2 (4) SIZE 16: 208270-2 (1)	1484621-1
SHELL & RETAINER PLATE FINISH	KEYING POSITION	CONTACTS INCLUDED NOT INSTALLED	PART NUMBER	

THIS DRAWING IS A CONTROLLED DOCUMENT. DIMENSIONS: INCHES. TOLERANCES UNLESS OTHERWISE SPECIFIED: 0 PLC ± -, 1 PLC ± -, 2 PLC ± -, 3 PLC ± .005 [0.13], 4 PLC ± -, ANGLES ± -.

MATERIAL: SEE CALLOUTS. FINISH: SEE CALLOUTS. WEIGHT: -. SIZE: A1. CAGE CODE: 00779. DRAWING NO: 1484621. CUSTOMER DRAWING. SCALE: 1:1. SHEET: 1 OF 1. REV: C.

STE TE Connectivity. PLUG ASSY. SIZE 2. REAR RELEASE, ARINC 600 WITH QUADRAX CONTACTS.