



Chipsmall Limited consists of a professional team with an average of over 10 year of expertise in the distribution of electronic components. Based in Hongkong, we have already established firm and mutual-benefit business relationships with customers from,Europe,America and south Asia,supplying obsolete and hard-to-find components to meet their specific needs.

With the principle of “Quality Parts,Customers Priority,Honest Operation,and Considerate Service”,our business mainly focus on the distribution of electronic components. Line cards we deal with include Microchip,ALPS,ROHM,Xilinx,Pulse,ON,Everlight and Freescale. Main products comprise IC,Modules,Potentiometer,IC Socket,Relay,Connector.Our parts cover such applications as commercial,industrial, and automotives areas.

We are looking forward to setting up business relationship with you and hope to provide you with the best service and solution. Let us make a better world for our industry!



## Contact us

Tel: +86-755-8981 8866 Fax: +86-755-8427 6832

Email & Skype: info@chipsmall.com Web: www.chipsmall.com

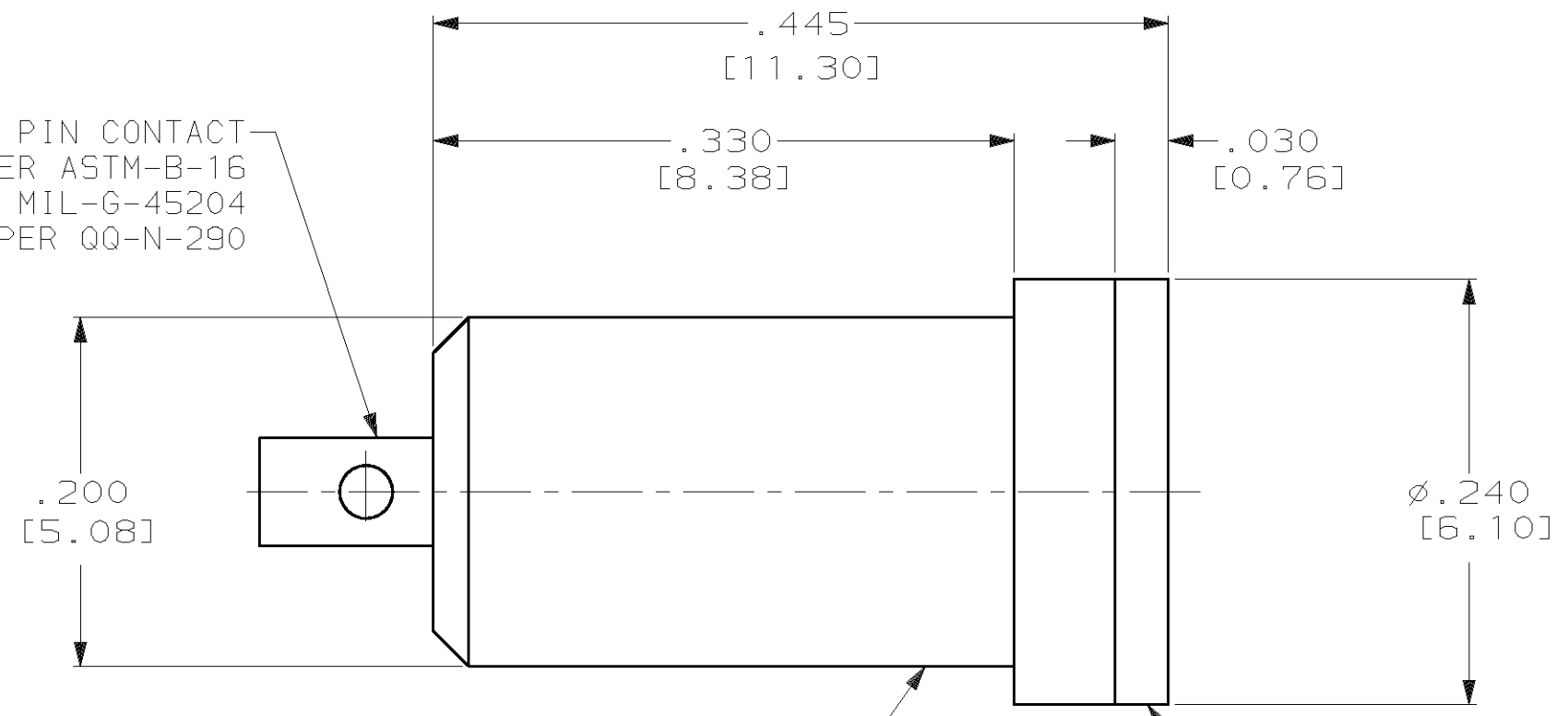
Address: A1208, Overseas Decoration Building, #122 Zhenhua RD., Futian, Shenzhen, China



THIS DRAWING IS UNPUBLISHED. RELEASED FOR PUBLICATION, 19 .  
 © COPYRIGHT 19 BY AMP INCORPORATED. ALL RIGHTS RESERVED.

LOC	DIST	REVISIONS			
P	LTR	DESCRIPTION	DATE	DWN	APVD
DF	SO	A	REV PER 0G3D-0392-02	8-02	CT DE

PIN CONTACT  
 MAT'L: BRASS PER ASTM-B-16  
 FINISH: GOLD PER MIL-G-45204  
 OVER NICKEL PER QQ-N-290



HOUSING  
 MAT'L: GLASS FILLED EPOXY  
 COLOR: BLACK

HOUSING INSERT  
 MAT'L: SILICONE MLDG. CMPD  
 PER ZZ-R-765

1. AMP INCORPORATED MAKES NO REPRESENTATIONS OR WARRANTIES REGARDING THE INTERMATABILITY OR USE OF ITS CONNECTOR WITH NON-AMP PRODUCT.

1484882-1  
 PART NO.

THIS DRAWING IS A CONTROLLED DOCUMENT FOR AMP INCORPORATED. IT IS SUBJECT TO CHANGE AND THE CONTROLLING ENGINEERING ORGANIZATION SHOULD BE CONTACTED FOR THE LATEST REVISION.		DWN C.C. THOMAS 5-6-02	<b>tyco</b> <b>Electronics</b>	TYCO Electronics Harrisburg, PA 17105-3608	
DIMENSIONS: INCHES [mm]		CHK D.EABY 5-6-02		NAME D.EABY	
TOLERANCES UNLESS OTHERWISE SPECIFIED: 0 PLC ±- 1 PLC ±- 2 PLC ±- 3 PLC ±.005 [0.13] 4 PLC ±- ANGLES ±- FINISH		APVD D.EABY 5-6-02	PRODUCT SPEC -		
MATERIAL SEE CALLOUTS		APPLICATION SPEC -	RECEPTACLE HOUSING ASSY, LGH		
		WEIGHT -	SIZE A3	CAGE CODE 00779	DRAWING NO ©=1484882
		CUSTOMER DRAWING	SCALE 10:1	SHEET 1 OF 1	REV A