



Chipsmall Limited consists of a professional team with an average of over 10 year of expertise in the distribution of electronic components. Based in Hongkong, we have already established firm and mutual-benefit business relationships with customers from,Europe,America and south Asia,supplying obsolete and hard-to-find components to meet their specific needs.

With the principle of "Quality Parts,Customers Priority,Honest Operation,and Considerate Service",our business mainly focus on the distribution of electronic components. Line cards we deal with include Microchip,ALPS,ROHM,Xilinx,Pulse,ON,Everlight and Freescale. Main products comprise IC,Modules,Potentiometer,IC Socket,Relay,Connector.Our parts cover such applications as commercial,industrial, and automotives areas.

We are looking forward to setting up business relationship with you and hope to provide you with the best service and solution. Let us make a better world for our industry!



Contact us

Tel: +86-755-8981 8866 Fax: +86-755-8427 6832

Email & Skype: info@chipsmall.com Web: www.chipsmall.com

Address: A1208, Overseas Decoration Building, #122 Zhenhua RD., Futian, Shenzhen, China



Type 12 Mild Steel Pushbutton Enclosures *1489 Series* Hinged Cover



Application

- Designed to accept standard heavy duty oil tight pushbuttons, switches and pilot lights.
- Provides protection from dirt, dust, oil and water.

Standards

- UL 508 Type 12
- CSA Type 12
- JIC standard EGP-1-1967, EMP-1-1967
- **Complies with**
 - NEMA Type 12
 - IEC 60529, IP54
- Appropriate components are required to maintain these standards.

Construction

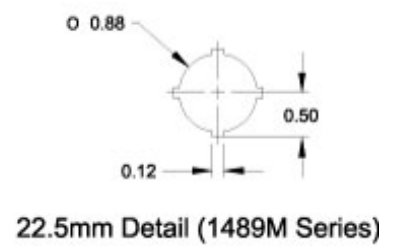
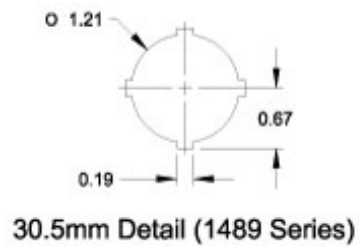
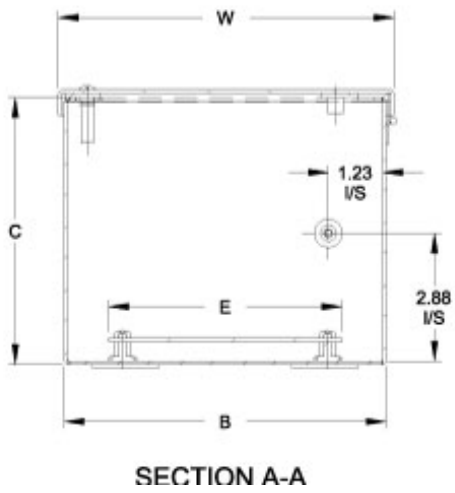
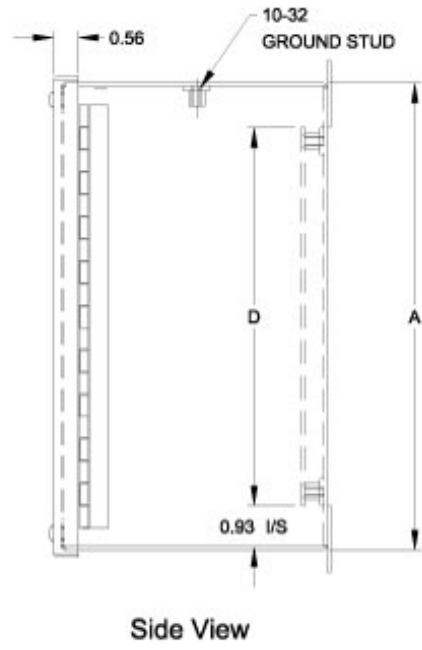
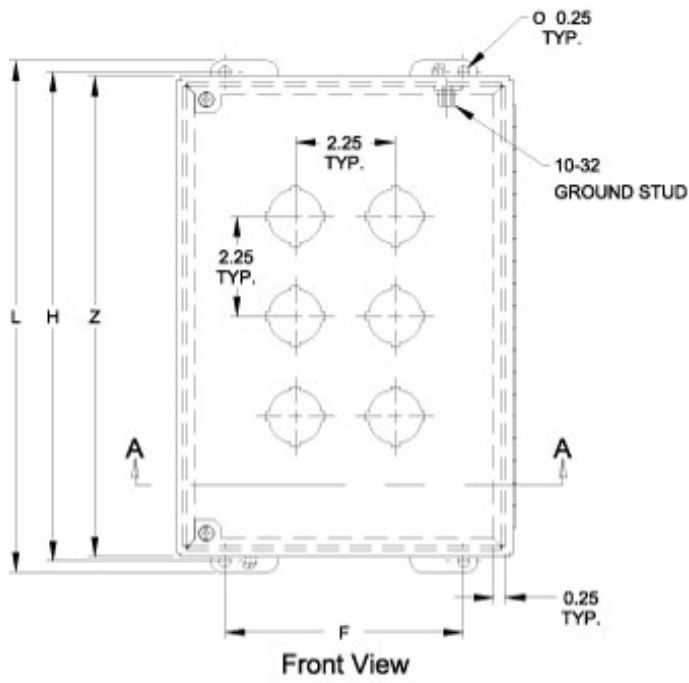
- Formed 14 gauge steel.
- Smooth continuously welded seams.
- Welded brackets provide for enclosure mounting.
- Continuously hinged cover is secured with captive, plated steel screws which fasten into threaded sealed wells.
- Oil resistant gasket and adhesive.
- Weldnuts are provided for mounting inner panels.
- A removable 14 gauge inner panel is included.
- A bonding stud is provided on the door and a grounding stud is provided in the enclosure.

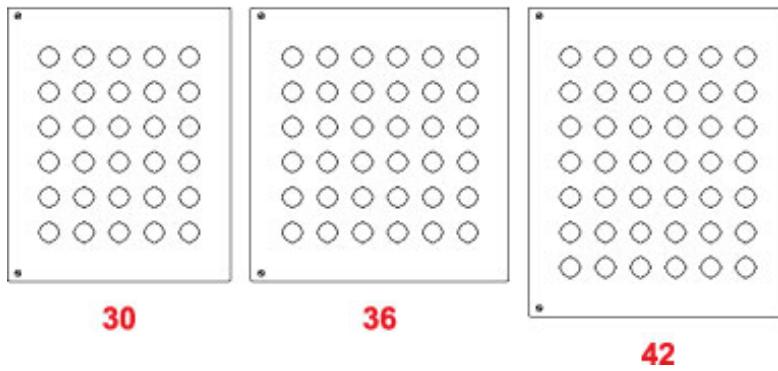
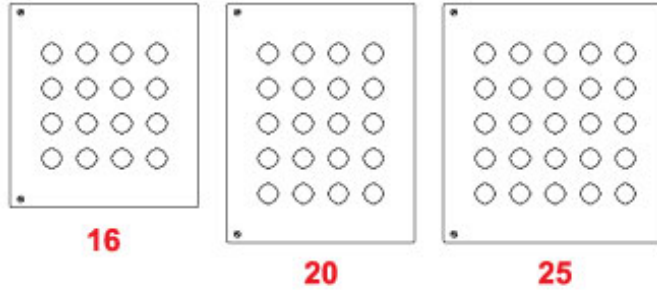
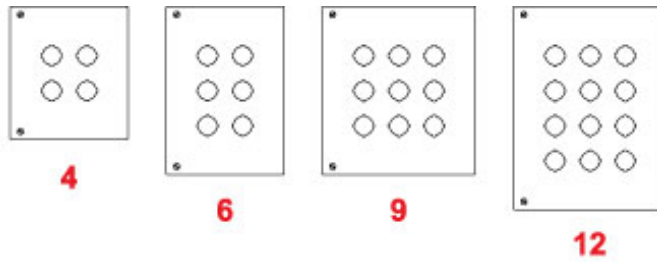
Finish

- Cover and enclosure are phosphatized and finished in ANSI 61 gray powder coating.
- Removable inner panel is finished in white powder coating.

Accessories

- Hole Plugs
- Ground Wire Kits
- Pedestal and Base





Part No.		No. Of Holes	Panel Size								Overall Dimensions			Ship Wt. Lbs.
30.5mm Hole	22.5mm Hole		A	B	C	D	E	F	H	L	W	Z		
1489P4	1489MP4	4	8.25	7.25	6.00	6.25	5.25	5.38	8.75	9.25	7.56	8.56	9	
1489P6	1489MP6	6	10.50	7.25	6.00	8.50	5.25	5.38	11.00	11.50	7.56	10.81	11	
1489P9	1489MP9	9	10.50	9.50	6.00	8.50	7.50	7.63	11.00	11.50	9.81	10.81	13	
1489P12	1489MP12	12	12.75	9.50	6.00	10.75	7.50	7.63	13.25	13.75	9.81	13.06	15	
1489P16	1489MP16	16	12.75	11.75	6.00	10.75	9.75	9.88	13.25	13.75	12.06	13.06	19	
1489P20	1489MP20	20	15.00	11.75	6.00	13.00	9.75	9.88	15.50	16.00	12.06	15.31	21	
1489P25	1489MP25	25	15.00	14.00	6.00	13.00	12.00	12.13	15.50	16.00	14.31	15.31	23	
1489P30	1489MP30	30	17.25	14.00	6.00	15.25	12.00	12.13	17.75	18.25	14.31	17.56	28	
1489P36	1489MP36	36	17.25	16.25	6.00	15.25	14.25	14.38	17.75	18.25	16.56	17.56	32	
1489P42	1489MP42	42	19.50	16.25	6.00	17.50	14.25	14.38	20.00	20.50	16.56	19.81	29	

Data subject to change without notice