



Chipsmall Limited consists of a professional team with an average of over 10 year of expertise in the distribution of electronic components. Based in Hongkong, we have already established firm and mutual-benefit business relationships with customers from,Europe,America and south Asia,supplying obsolete and hard-to-find components to meet their specific needs.

With the principle of “Quality Parts,Customers Priority,Honest Operation,and Considerate Service”,our business mainly focus on the distribution of electronic components. Line cards we deal with include Microchip,ALPS,ROHM,Xilinx,Pulse,ON,Everlight and Freescale. Main products comprise IC,Modules,Potentiometer,IC Socket,Relay,Connector.Our parts cover such applications as commercial,industrial, and automotives areas.

We are looking forward to setting up business relationship with you and hope to provide you with the best service and solution. Let us make a better world for our industry!



## Contact us

Tel: +86-755-8981 8866 Fax: +86-755-8427 6832

Email & Skype: info@chipsmall.com Web: www.chipsmall.com

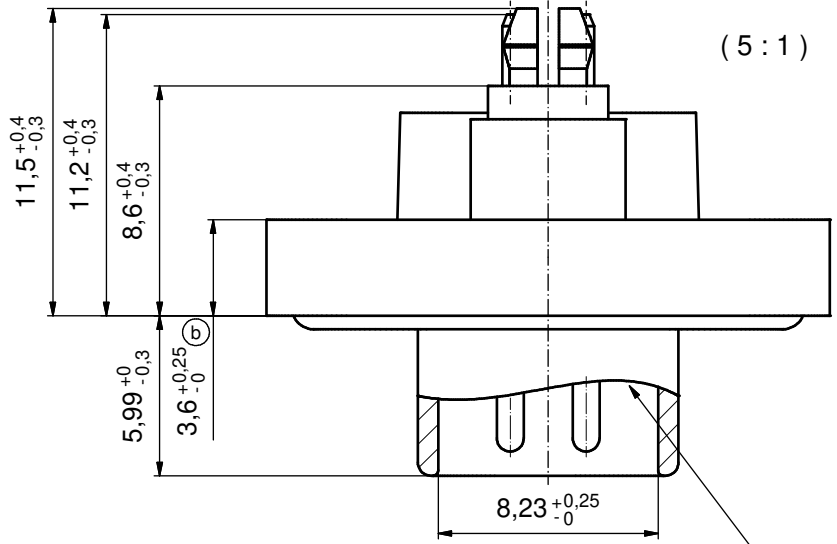
Address: A1208, Overseas Decoration Building, #122 Zhenhua RD., Futian, Shenzhen, China



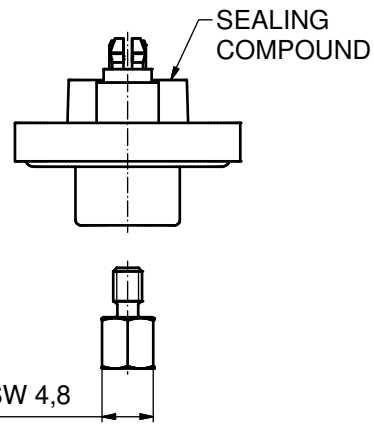
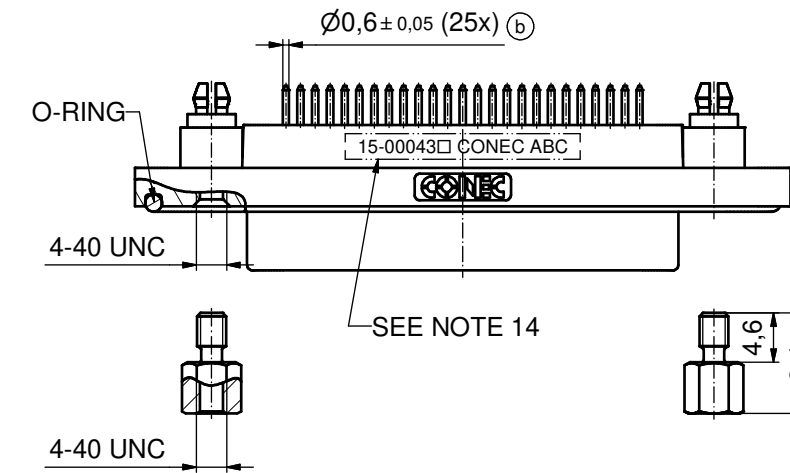
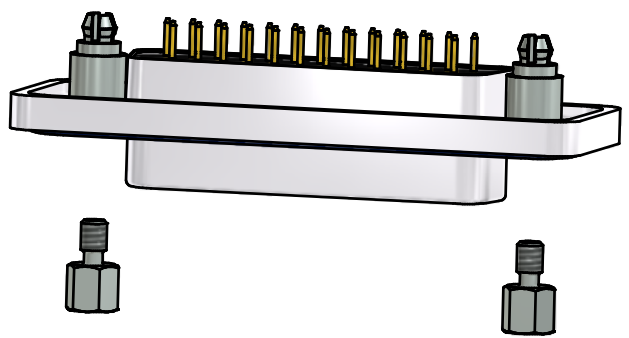
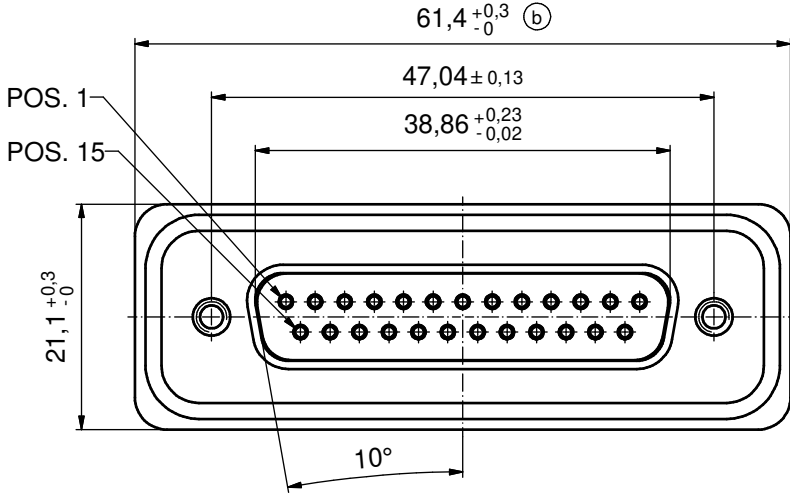
(b) (c)

NOTES:

1. FOR WAVESOLDERING (SOLDER BATH TEMPERATURE 265°C FOR 8 SEC. AND SOLDER PREHEAT 150°C FOR 180 SEC.)
2. IP RATING: IP 67
3. SEALED TO WITHSTAND PRESSURE UP TO 1,45 PSI FOR 30 MINUTES AFTER HIGH TEMPERATURE EXPOSURE
4. METAL SHELL: ZINC DIE CAST; min. 50µin NICKEL PLATING over COPPER
5. INSULATORS: PBT GF UL 94 V-0, BLACK
6. O-RING: SILICON; BLUE
7. RUBBER GASKET: TPE; BLACK
8. SEALING COMPOUND: EPOXY RESIN UL 94 V-0; BLACK
9. CONTACTS: COPPER ALLOY  
PLATING (SEE PART NO.):  
 PLEASE ADD 1 for 30µin HARD GOLD over min. 50µin NICKEL  
 PLEASE ADD 2 for 20µin HARD GOLD over min. 50µin NICKEL  
 PLEASE ADD 3 for GOLD FLASH over NICKEL
10. REAR SPACER CLIPS: COPPER ALLOY; min. 200µin TIN over 80µin NICKEL  
PCB-HOLE:  $\varnothing 3,1 \pm 0,1$ ; PCB THICKNESS 1,6mm
11. HEXLOCKING SCREWS: STAINLESS STEEL
12. PCB-HOLE DRILLINGS and RECOMMENDED PANEL CUT-OUT ON SHEET 2
13. RECOMMENDED TORQUE FOR MOUNTING SCREW 35Ncm (3.1 in.LB) / max.67Ncm (6 in.LB)
14. CONNECTOR IS PART MARKED: 15-00043 CONEC ABC (see note 9)



RUBBER GASKET PLACED ON TOP SURFACE OF MALE INSULATOR

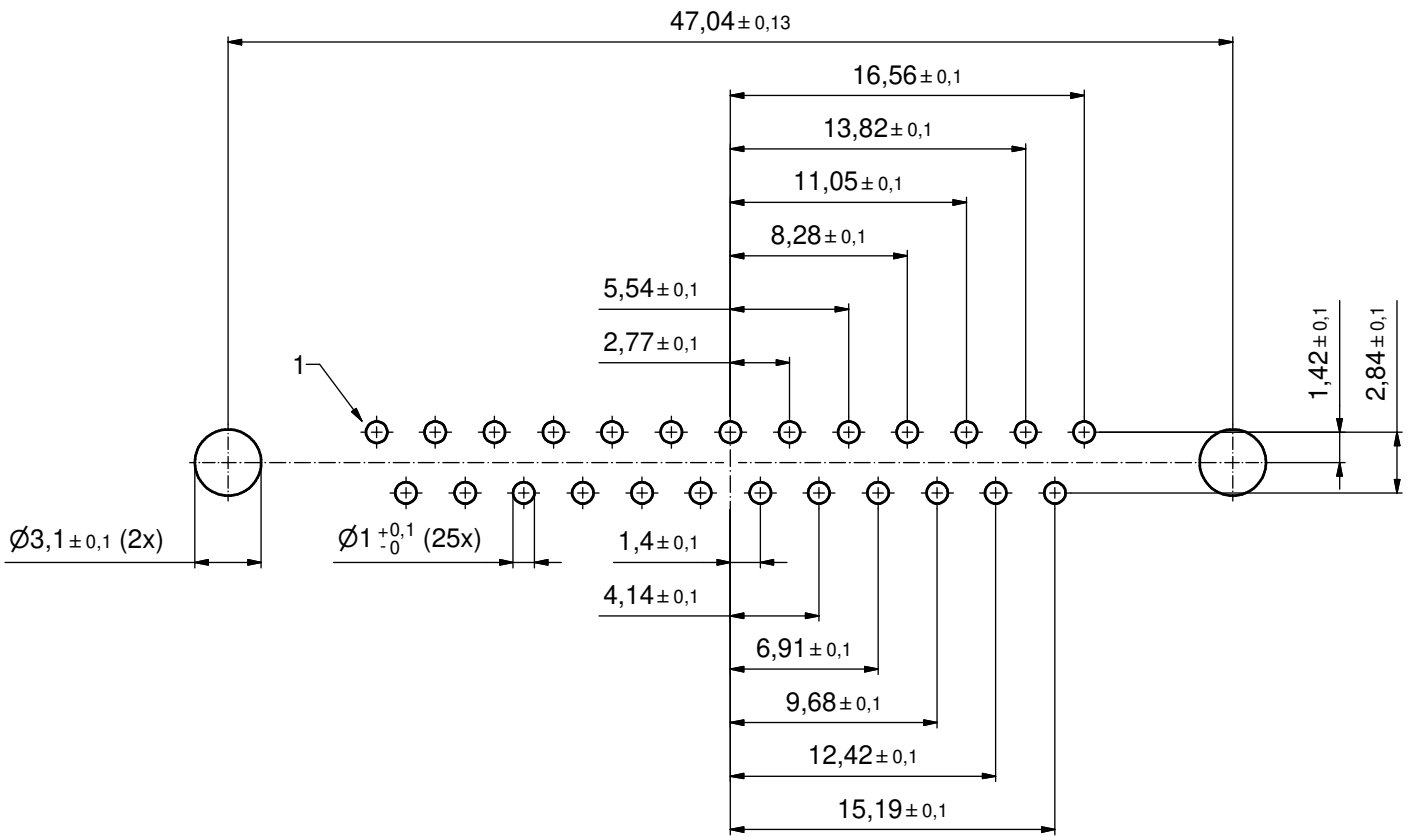


(b) AT ALL TIMES WATER RESISTANT CONNECTORS NOT IN USE SHOULD BE COVERED WITH A CONEC WATER RESISTANT CAP OR WATER TIGHT HOOD.

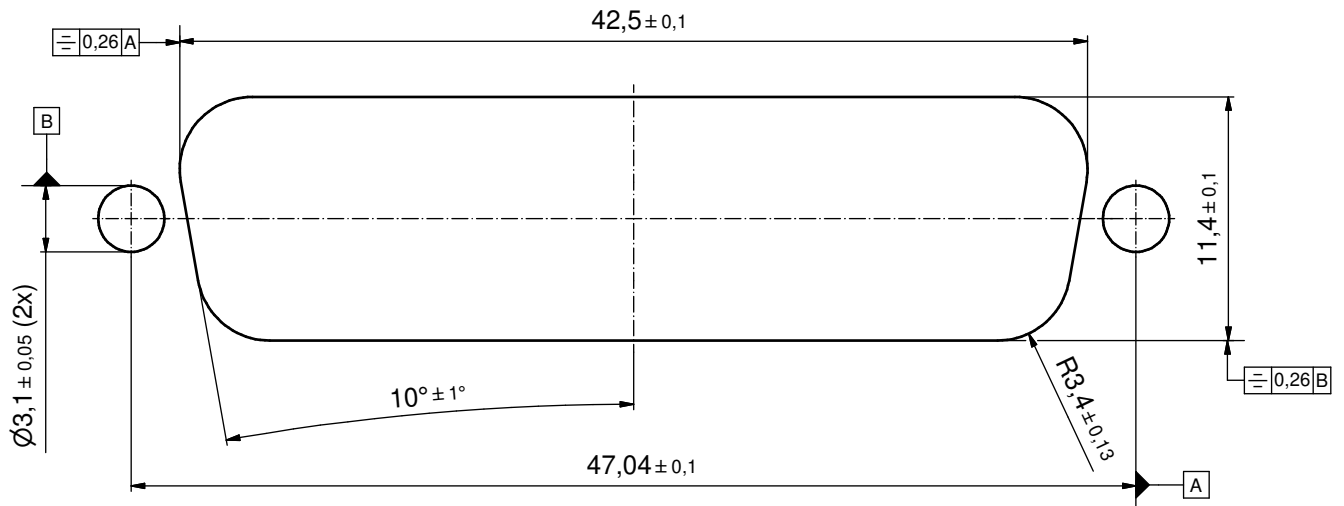
(c) RoHS compliant



|  |             |          |          |                |            |   |        |
|--|-------------|----------|----------|----------------|------------|---|--------|
| THIS DRAWING MAY NOT BE COPIED OR REPRODUCED IN ANY WAY, AND MAY NOT BE PASSED ON TO A THIRD PARTY WITHOUT WRITTEN PERMISSION. OWNERSHIP AND COPYRIGHT OF CONEC GmbH |             |          |          | tolerance      |            | scale: 2:1 (5:1)  |        |
|  |             |          |          | dim. in mm     |            | material: see notes   |        |
| DO NOT ALTER CAD DRAWING BY HAND   |             |          |          | date           | name       | title:<br><b>D-SUB MALE</b><br>25pos. SOLDER PIN STRAIGHT<br>with rear spacer clip and hexlocking screw |        |
|  |             |          |          | drawn          | 17.10.2008 |   |        |
| appd.  | 21.10.2008  | Fischer  |          |                |            |   |        |
| norm   |             |          | dwg no:  |                | 15K1A290   |   | DIN-A3 |
| 2 x c  | Ä5528       | 10.02.15 | Heinrich | d-old          |            |   | sh: 1  |
| 5 x b  | Ä3435       | 21.02.09 | HS       | <b>CONEC</b> ® |            | part no:  |        |
| a  | Original    |          |          |                |            | 15-00043 (see note 9)   |        |
| rev.   | description | date     | name     |                |            |   |        |

# P.C.B. HOLE DRILLINGS



# RECOMMENDED PANEL CUT-OUT



|   |             |            |  |   |                       |  |
|---|-------------|------------|--|---|-----------------------|--|
| THIS DRAWING MAY NOT BE COPIED OR REPRODUCED IN ANY WAY, AND MAY NOT BE PASSED ON TO A THIRD PARTY WITHOUT WRITTEN PERMISSION. OWNERSHIP AND COPYRIGHT OF CONEC GmbH DO NOT ALTER CAD DRAWING BY HAND |             |            | tolerance  |  | scale: 4:1            |  |
|   |             |            | dim. in mm   |   | material: see sheet 1 |  |
|   | drawn       | 17.10.2008 | Schmidt  | title: P.C.B HOLE DRILLINGS<br>PANEL CUT-OUT<br>D-SUB Male 25pos. Solder pin straight |                       |  |
|   | appd.       | 21.10.2008 | Fischer  |   |                       |  |
|   | norm        |            |  |   |                       |  |
| d-old   |             |            | dwg no:  |   |                       |  |
| a   | Original    |            |  |   |                       |  |
| rev.  | description | date       |  |   |                       | dwg no: 15K1A290<br>part no: see sheet 1 |
|   |             |            | DIN-A3<br>sh: 2  |   |                       |  |