

Chipsmall Limited consists of a professional team with an average of over 10 year of expertise in the distribution of electronic components. Based in Hongkong, we have already established firm and mutual-benefit business relationships with customers from,Europe,America and south Asia,supplying obsolete and hard-to-find components to meet their specific needs.

With the principle of “Quality Parts,Customers Priority,Honest Operation,and Considerate Service”,our business mainly focus on the distribution of electronic components. Line cards we deal with include Microchip,ALPS,ROHM,Xilinx,Pulse,ON,Everlight and Freescale. Main products comprise IC,Modules,Potentiometer,IC Socket,Relay,Connector.Our parts cover such applications as commercial,industrial, and automotives areas.

We are looking forward to setting up business relationship with you and hope to provide you with the best service and solution. Let us make a better world for our industry!



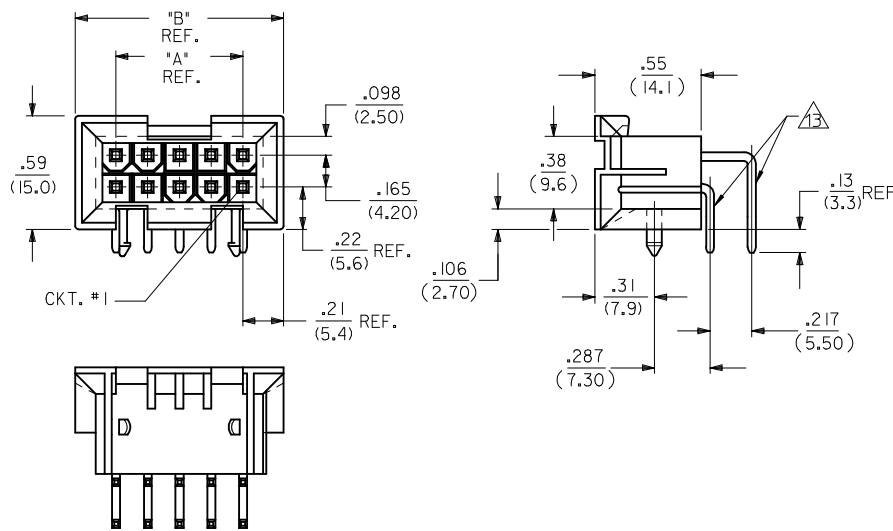
## Contact us

Tel: +86-755-8981 8866 Fax: +86-755-8427 6832

Email & Skype: info@chipsmall.com Web: www.chipsmall.com

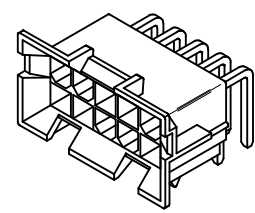
Address: A1208, Overseas Decoration Building, #122 Zhenhua RD., Futian, Shenzhen, China

|   | CIRCUIT SIZE | DIM. "A"         | DIM. "B"       |
|---|--------------|------------------|----------------|
| J | 6            | .331<br>(8.40)   | .76<br>(19.2)  |
|   | 8            | .496<br>(12.60)  | .92<br>(23.4)  |
|   | 10           | .661<br>(16.80)  | 1.09<br>(27.6) |
| I | 12           | .827<br>(21.00)  | 1.25<br>(31.8) |
|   | 14           | .992<br>(25.20)  | 1.42<br>(36.0) |
|   | 16           | 1.157<br>(29.40) | 1.58<br>(40.2) |
| H | 18           | 1.323<br>(33.60) | 1.75<br>(44.4) |
|   | 20           | 1.488<br>(37.80) | 1.91<br>(48.6) |
|   | 22           | 1.654<br>(42.00) | 2.08<br>(52.8) |
| G | 24           | 1.819<br>(46.20) | 2.24<br>(57.0) |

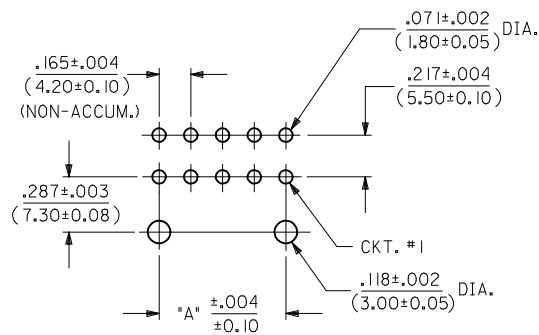


**NOTES:**

- MATERIAL: HOUSING: "A" = NYLON 6/6, U.L. 94V-2, COLOR: NATURAL. "B" = NYLON 6/6, U.L. 94V-0, COLOR: NATURAL. TERMINAL: BRASS ALLOY
- TERMINAL PLATING:
  - = .000100/(.00254) MIN. MATTE TIN OVER .000050/(.00127) MIN. NICKEL OVERALL.
  - = .000030/(.00076) MIN. SELECT GOLD AND .000100/(.00254) MIN. SELECT MATTE TIN OVER .000050/(.00127) MIN. NICKEL OVERALL.
- PRODUCT SPECIFICATION: PS-5556-002
- PACKAGING SPECIFICATION: PK-42404-002.
- 4-24 CKT. PARTS MATE WITH MINI-FIT JR. RECEPTACLES #5557, #42385, #44516 AND #42474. 2 CKT. PART MATES WITH #42385, #44516 AND #42474 ONLY.
- PART ALLOWS FOR UP TO .100/(2.54) MISALIGNMENT WITH MATING RECEPTACLE IN ANY DIRECTION. SEE MATING CONNECTOR DRAWINGS FOR SPECIFIC ALLOWANCES.
- CONNECTOR ASSEMBLIES ARE NOT TO BE MATED OR UNMATED WHILE CIRCUITS ARE LIVE.
- A MAXIMUM TOLERANCE OF .050/(1.27) ALLOWS FOR 2 POINTS OF ELECTRICAL CONTACT. A MAXIMUM TOLERANCE OF .020/(.51) ALLOWS FOR 4 POINTS OF CONTACT.
- DISCOLORATION IN THE BANDOLIER CARRIER AREA OF THE PIN IS INHERENT TO THE PLATING PROCESS AND IS DUE TO THE MASKING EFFECT OF THE CARRIER. THIS DISCOLORATION IS IN A NON-FUNCTIONAL AREA OF THE PIN AND WILL NOT AFFECT THE PERFORMANCE OF THE HEADER ASSEMBLY.
- PART IS NOT DESIGNED FOR CURRENT SHARING.
- PART IS NOT INTENDED TO PROVIDE ANY ALIGNMENT OF CUSTOMER COMPONENTS OR MODULES, SUCH AS POWER SUPPLIES AND CHASSIS.
- PARTS CONFORM TO CLASS 'B' REQUIREMENTS OF COSMETIC SPECIFICATION PS-45499-002.\*
- FORMING MARKS ARE ACCEPTABLE.
- CORNER CORE-OUTS ARE OPTIONAL AND MAY OR MAY NOT BE PRESENT
- TEXT ON PART IS FOR REFERENCE ONLY. TEXT AND TEXT LOCATION MAY VARY DEPENDING ON PART NUMBER AND/OR TOOL.

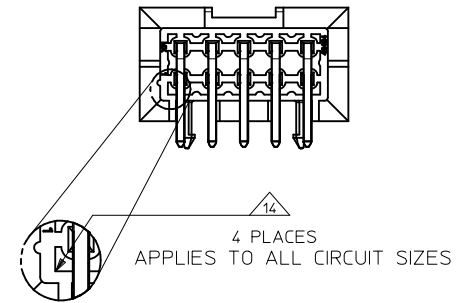
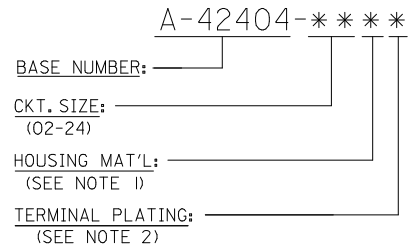


A-42404-\*\*\*\*



RECOMMENDED HOLE LAYOUT FOR .070/(1.78) MAX. THICK P.C. BOARD VIEWED FROM COMPONENT SIDE

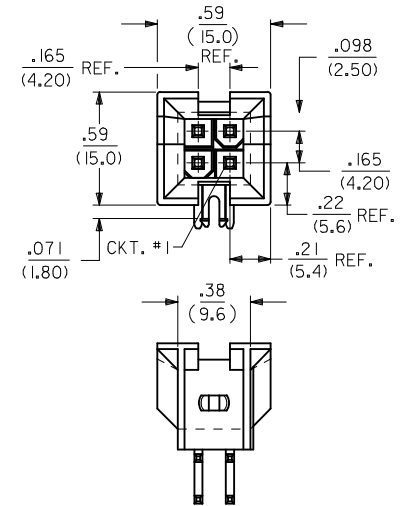
**LEGEND:**



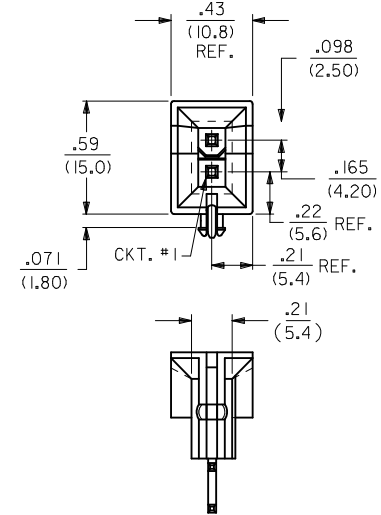
| Part No.     | Part Description         | Material | Plating |
|--------------|--------------------------|----------|---------|
| ---B2, ---B4 | 42474-***21, 5556-PBGS*P | 94V-0    | GOLD    |
| ---A2, ---A4 | 42474-***11, 5556-PBGS*P | 94V-2    |         |
| ---B1, ---B3 | 42474-***21, 5556-PBS*P  | 94V-0    | TIN     |
| ---A1, ---A3 | 42474-***11, 5556-PBS*P  | 94V-2    |         |
| ---B2, ---B4 | 42474-***21, 5556-GS*P   | 94V-0    | GOLD    |
| ---A2, ---A4 | 42474-***11, 5556-GS*P   | 94V-2    |         |
| ---B1, ---B3 | 42474-***21, 5556-S*P    | 94V-0    | TIN     |
| ---A1, ---A3 | 42474-***11, 5556-S*P    | 94V-2    |         |
| ---B2, ---B4 | A-42385-***D2            | 94V-0    | GOLD    |
| ---A2, ---A4 | A-42385-***C2            | 94V-2    |         |
| ---B1, ---B3 | A-42385-***D1            | 94V-0    | TIN     |
| ---A1, ---A3 | A-42385-***C1            | 94V-2    |         |
| ---B2, ---B4 | A-42385-***B2            | 94V-0    | GOLD    |
| ---A2, ---A4 | A-42385-***A2            | 94V-2    |         |
| ---B1, ---B3 | A-42385-***B1            | 94V-0    | TIN     |
| ---A1, ---A3 | A-42385-***A1            | 94V-2    |         |

|   |                                      |  |                                    |                                 |                                       |  |                               |                        |  |
|---|--------------------------------------|--|------------------------------------|---------------------------------|---------------------------------------|--|-------------------------------|------------------------|--|
| <b>ADD BACK VIEW</b><br>EC NO: UCP2017-0438<br>DRWNGS: LAFTER 2016/08/23<br>CHKD: J.BELL 2016/08/23<br>APPR: F.SMITH 2016/09/12 | QUALITY SYMBOLS<br>∇=0<br>∇=0<br>∇=0 | GENERAL TOLERANCES (UNLESS SPECIFIED)  |                                    | DIMENSION STYLE<br><b>IN/MM</b> |                                       | SCALE<br><b>2:1</b>  | DESIGN UNITS<br><b>METRIC</b> | THIRD ANGLE PROJECTION |  |
|   |                                      | 4 PLACES ± --- ± ---<br>3 PLACES ± --- ± .10<br>2 PLACES ± 0.25 ± .015<br>1 PLACE ± 0.38 ± --- | mm<br>INCH                         | DRAWN BY<br>RWK                 | DATE<br>2/7/89                        | TITLE<br><b>MINI-FIT JR. 2-24 CKT RIGHT ANGLE HEADER ASSY (BLIND MATE)</b> |                               |                        |  |
|   |                                      | ANGULAR ± 1/2°   | APPROVED BY<br>F.SMITH             | DATE<br>2/7/89                  | <b>MOLEX INCORPORATED</b>             |  |                               |                        |  |
|   |                                      | DRAFT WHERE APPLICABLE MUST REMAIN WITHIN DIMENSIONS   | MATERIAL NO.<br><b>SEE SHEET 3</b> | DATE<br>2011/11/01              | DOCUMENT NO.<br><b>SDA-42404-****</b> | SHEET NO.<br><b>1 OF 3</b>   |                               |                        |  |

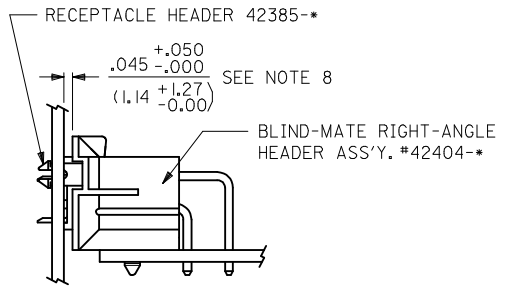
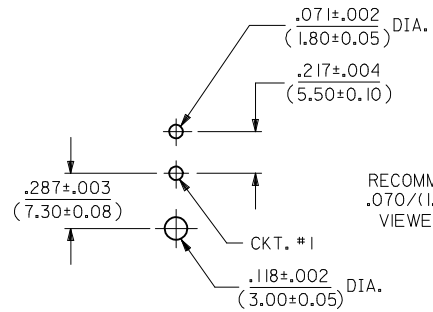
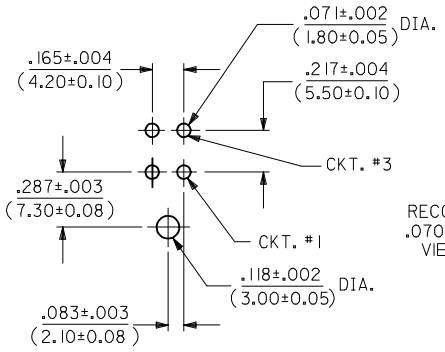
THIS DRAWING CONTAINS INFORMATION THAT IS PROPRIETARY TO MOLEX INCORPORATED AND SHOULD NOT BE USED WITHOUT WRITTEN PERMISSION



A-42404-04\*\*



A-42404-02\*\*



SEE RECEPTACLE DRAWINGS FOR ADDITIONAL MATING CONFIGURATIONS

|   |                      |  |   |                    |   |                        |
|---|----------------------|--|---|--------------------|---|------------------------|
| SEE SHEET 1<br>EC NO: UCP2017-0436<br>DRAWN:SLAFTER 2016/08/23<br>CHKD:JBELL 2016/08/23<br>APPR:FSMITH 2016/09/21 | QUALITY SYMBOLS      | GENERAL TOLERANCES (UNLESS SPECIFIED)                      | DIMENSION STYLE<br>IN/MM  | SCALE<br>2:1       | DESIGN UNITS<br>METRIC  | THIRD ANGLE PROJECTION |
|   | ▽=0                  | 4 PLACES ± --- ± ---                                       | DRAWN BY<br>RWK   | DATE<br>2/7/89     | TITLE<br>MINI-FIT JR. 2-24 CKT<br>RIGHT ANGLE HEADER ASSY<br>(BLIND MATE) |                        |
|   | ▽=0                  | 3 PLACES ± --- ± .010                                      | CHECKED BY<br>RJF   | DATE<br>2/7/89     |   |                        |
|   | ▽=0                  | 2 PLACES ± 0.25 ± .015                                     | APPROVED BY<br>FSMITH   | DATE<br>2011/11/01 | MOLEX INCORPORATED  |                        |
| REV   | 1 PLACE ± 0.38 ± --- | ANGULAR ± 1/2°   | MATERIAL NO.  | DOCUMENT NO.       | SHEET NO.<br>2 OF 3   |                        |
| T3  |                      | DRAFT WHERE APPLICABLE<br>MUST REMAIN<br>WITHIN DIMENSIONS | SEE SHEET 3   | SDA-42404-****     |   |                        |
|   |                      |  | THIS DRAWING CONTAINS INFORMATION THAT IS PROPRIETARY TO MOLEX INCORPORATED AND SHOULD NOT BE USED WITHOUT WRITTEN PERMISSION |                    |   |                        |

