



Chipsmall Limited consists of a professional team with an average of over 10 year of expertise in the distribution of electronic components. Based in Hongkong, we have already established firm and mutual-benefit business relationships with customers from,Europe,America and south Asia,supplying obsolete and hard-to-find components to meet their specific needs.

With the principle of "Quality Parts,Customers Priority,Honest Operation,and Considerate Service",our business mainly focus on the distribution of electronic components. Line cards we deal with include Microchip,ALPS,ROHM,Xilinx,Pulse,ON,Everlight and Freescale. Main products comprise IC,Modules,Potentiometer,IC Socket,Relay,Connector.Our parts cover such applications as commercial,industrial, and automotives areas.

We are looking forward to setting up business relationship with you and hope to provide you with the best service and solution. Let us make a better world for our industry!



Contact us

Tel: +86-755-8981 8866 Fax: +86-755-8427 6832

Email & Skype: info@chipsmall.com Web: www.chipsmall.com

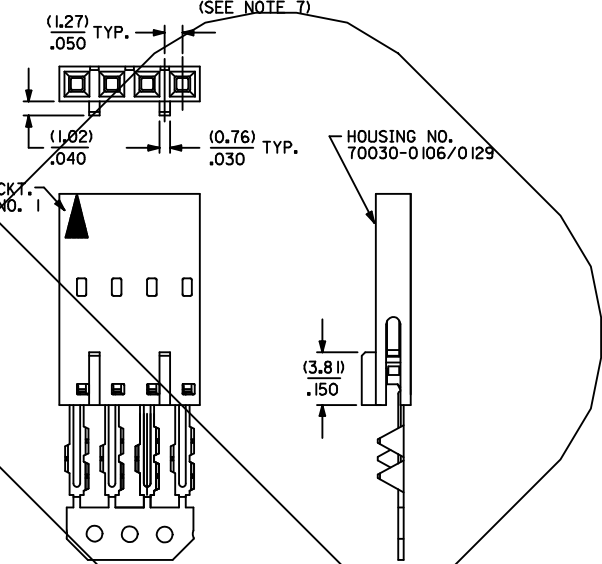
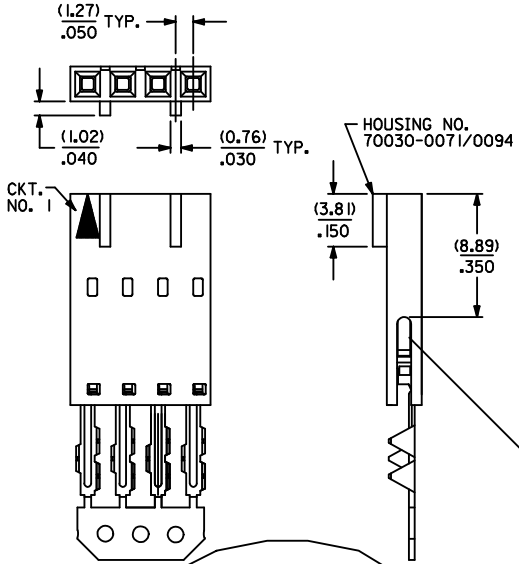
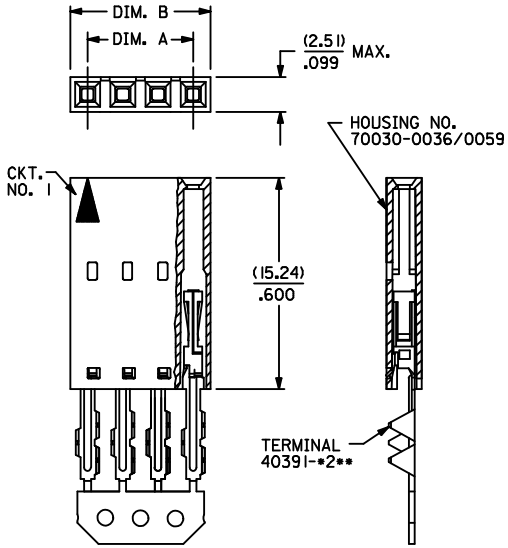
Address: A1208, Overseas Decoration Building, #122 Zhenhua RD., Futian, Shenzhen, China



OPTION -A-

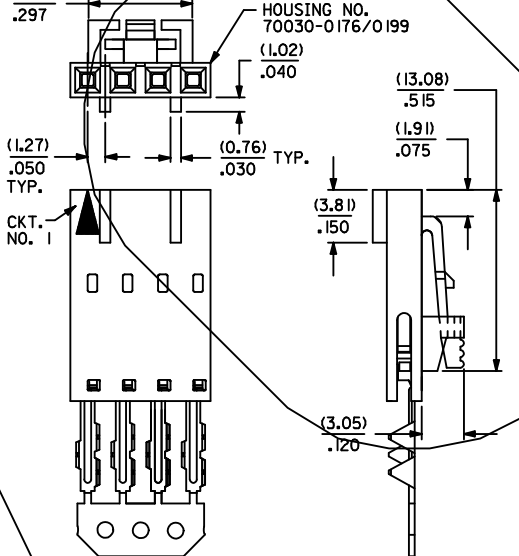
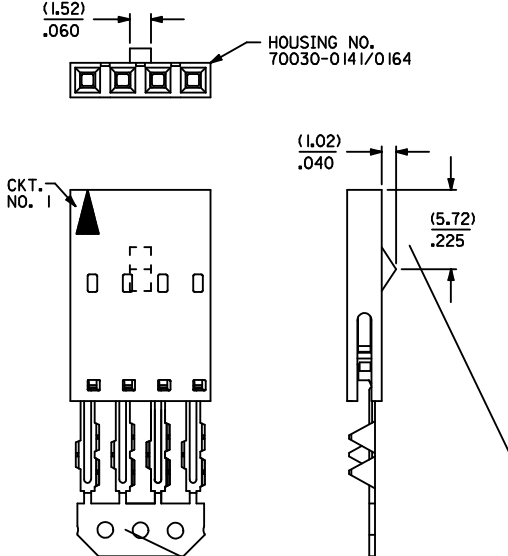
OPTION -C-

OPTION -D-
(SEE NOTE 7)

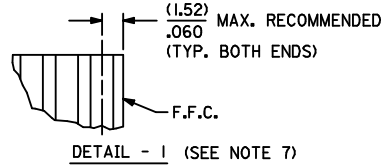


OPTION -E-

OPTION -G- (SEE NOTE 8)



- NOTES:
- SEE CHART FOR CIRCUIT SIZES.
 - TERMINALS ARE SHOWN PRE-LOADED INTO HOUSING AND LOCKED INTO FIRST ROW.
 - STANDARD PACKAGING PER PK70873-0001 SHALL BE USED.
 - ALL DIMENSIONS ARE FOR REFERENCE ONLY.
 - SEE SHEET (2) OF FAMILY DRAWING FOR PART NO'S. AND PLATINGS
 - PRE LOADED ASSEMBLY TO BE USED WITH (0.35)/.014 MAX. THICK FLAT FLEX CABLE WITH (1.57)/.062 WIDE COPPER CONDUCTORS ON (2.54)/.100 CENTERS OR, (0.13)/.005 - (0.28)/.011 THICK MYLAR WITH (1.02)/.040 - (1.65)/.065 WIDE SILVER INK CONDUCTORS. ON (2.54)/.100 CENTERS.
 - RECOMMENDED F.F.C. CONFIGURATION FOR OPTION "D" ONLY; WHEN USED WITH INTERIM CLIPS, SEE DETAIL 1.
 - SEE SHEET 3 FOR CORE-OUT CONFIGURATION, "G" OPTION.
 - TWO (2) CIRCUIT ASSEMBLIES SUPPLIED ASA GROUPED PAIRS.
 - PLATING IS COLOR CODED. SEE TABLE ON SHEET 2.



CKT. SIZE	"A"	"B" (MAX.)
2	(2.54)	(5.05)
	.100	.199
3	(5.08)	(7.59)
	.200	.399
4	(7.62)	(10.13)
	.300	.599
5	(10.16)	(12.67)
	.400	.899
6	(12.70)	(15.21)
	.500	.1.599
7	(15.24)	(17.75)
	.600	.2.199
8	(17.78)	(20.29)
	.700	.2.799
9	(20.32)	(22.83)
	.800	.3.399
10	(22.86)	(25.37)
	.900	.3.999
11	(25.40)	(27.91)
	1.000	.4.599
12	(27.94)	(30.45)
	1.100	.5.199
13	(30.48)	(32.99)
	1.200	.5.799
14	(33.02)	(35.53)
	1.300	.6.399
15	(35.56)	(38.07)
	1.400	.6.999
16	(38.10)	(40.61)
	1.500	.7.599
17	(40.64)	(43.15)
	1.600	.8.199
18	(43.18)	(45.69)
	1.700	.8.799
19	(45.72)	(48.23)
	1.800	.9.399
20	(48.26)	(50.77)
	1.900	.9.999
21	(50.80)	(53.31)
	2.000	1.0.599
22	(53.34)	(55.85)
	2.100	1.1.199
23	(55.88)	(58.39)
	2.200	1.1.799
24	(58.42)	(60.93)
	2.300	1.2.399
25	(60.96)	(63.47)
	2.400	1.2.999

VOIDED DRAWING	QUALITY SYMBOLS
EC NO: UCP2013-2452	▽=0
DRW:RWHIPPLE 2012/12/19	▽=0
CHKD:MORGAN 2012/12/19	▽=0
APPR:SMILLER 2013/01/31	▽=0
REV	DESCRIPTION

GENERAL TOLERANCES (UNLESS SPECIFIED)	DIMENSION STYLE IN/MM	SCALE 4:1	DESIGN UNITS INCH	THIRD ANGLE PROJECTION
mm INCH	DRAWN BY RWHIPPLE DATE 2012/12/19	TITLE	CONNECTOR FFC ASSY, SINGLE ROW FEMALE, .100 GRID	
4 PLACES ± .005 ± .005	CHECKED BY DATE	molex VOID		
3 PLACES ± .005 ± .005	APPROVED BY SMILLER DATE 2013/01/31			
2 PLACES ± .005 ± .005	MATERIAL NO.	DOCUMENT NO. SDA-70430-****	SHEET NO. 1 OF 3	
1 PLACE ± .005 ± .005	SIZE C	THIS DRAWING CONTAINS INFORMATION THAT IS PROPRIETARY TO MOLEX INCORPORATED AND SHOULD NOT BE USED WITHOUT WRITTEN PERMISSION		
0 PLACE ± .005 ± .005	DRAFT WHERE APPLICABLE MUST REMAIN WITHIN DIMENSIONS			

OPTION "A"

OPTION "C"

OPTION "D"

ENG. NO.	PLATING	EDP. NO.	ENG. NO.	PLATING	EDP. NO.	ENG. NO.	PLATING	EDP. NO.
A-70430-0001/0024	TIN	015-38-8**8	A-70430-0036/0059	TIN	015-38-8**7	A-70430-0071/0094	TIN	015-38-8**9
A-70430-0176/0199	15 GOLD	015-47-4**0	A-70430-0211/0234	15 GOLD	015-47-4**1	A-70430-0246/0269	15 GOLD	015-47-4**2
A-70430-0351/0374	30 GOLD	015-47-4**4	A-70430-0386/0409	30 GOLD	015-47-4**5	A-70430-0421/0444	30 GOLD	015-47-4**6

OPTION "E"

OPTION "G"

ENG. NO.	PLATING	EDP. NO.	ENG. NO.	PLATING	EDP. NO.
AX-70430-0106/0129	TIN	NOT TOOLED	A-70430-0141/0141	TIN	015-38-8**0
AX-70430-0281/0304	15 GOLD	NOT TOOLED	A-70430-0316/0339	15 GOLD	015-47-4**3
AX-70430-0456/0479	30 GOLD	NOT TOOLED	A-70430-0491/0514	30 GOLD	015-47-4**7

** INSERT CIRCUIT SIZE; 02-25

PLATING CHART PER ES-88-***

- TIN - .000150 MINIMUM TIN OVER
.000050 MINIMUM NICKEL PLATE.
- 15 GOLD - .000015 MINIMUM GOLD PLATE IN SELECT AREA.
.000075 MINIMUM TIN PLATE IN SELECT AREA.
.000050 MINIMUM NICKEL PLATE OVERALL.
- 30 GOLD - .000030 MINIMUM GOLD PLATE IN SELECT AREA.
.000075 MINIMUM TIN PLATE IN SELECT AREA.
.000050 MINIMUM NICKEL PLATE OVERALL.

PLATING PER ES-88:	COLOR CODE
TIN	NONE
15 GOLD	YELLOW
30 GOLD	RED

*THE PRIMARY SHIPPING CARTON WILL BE LABELED *COMPLIANT TO ROHS DIRECTIVE 2002/95/EC AND ELV ANNEX II OF DIRECTIVE 2000/53/EC*. CARTONS WITHOUT THIS LABEL MAY CONTAIN PRODUCT WITH LEAD.

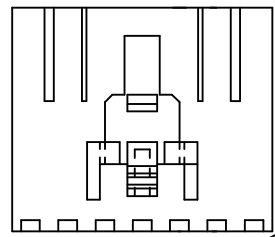
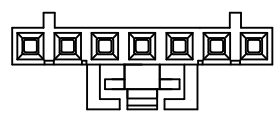
VOIDED DRAWING EC NO: UCP2013-2452 DRAWN: RWHIPPLE 2012/12/19 CHKD: DMORGAN 2012/12/19 APPR: SMILLER 2013/01/31	QUALITY SYMBOLS ▽=0 ▽=0 ▽=0	GENERAL TOLERANCES (UNLESS SPECIFIED)		DIMENSION STYLE	SCALE	DESIGN UNITS	THIRD ANGLE PROJECTION
				IN/MM	1:1	INCH	
				DRAWN BY	DATE	TITLE	
				CHECKED BY	DATE	CONNECTOR FFC ASSY, SINGLE ROW FEMALE, .100 GRID	
		APPROVED BY		DATE	molex VOID		DOCUMENT NO. SDA-70430-****
		SMILLER		2013/01/31	SHEET NO. 2 OF 3		
		MATERIAL NO.		THIS DRAWING CONTAINS INFORMATION THAT IS PROPRIETARY TO MOLEX INCORPORATED AND SHOULD NOT BE USED WITHOUT WRITTEN PERMISSION			
		ANGULAR ±1/2°		FAMILY INDEX			
		DRAFT WHERE APPLICABLE MUST REMAIN WITHIN DIMENSIONS					

13 12 11 10 9 8 7 6 5 4 3 2 1

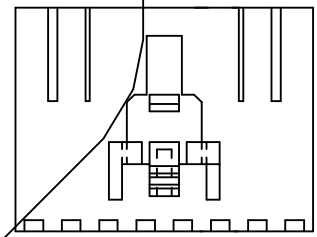
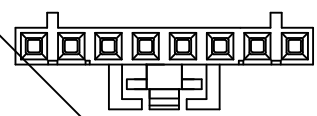
J
I
H
G
F
E
D
C
B
A

J
I
H
G
F
E
D
C
B
A

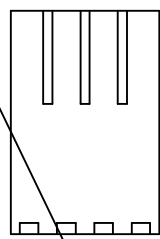
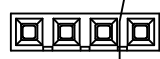
CORE-OUT FOR HSG.
OPTION "G" - CKT. SIZES 5, 7, 9, 11, 13,
15, 17, 19, 21, 23, 25 (7 CKT. SHOWN)
 (FOR CONTROL OF BOW)



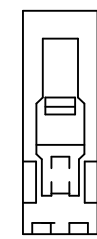
CORE-OUT FOR HSG.
OPTION "G" - CKT. SIZES 6, 8, 10, 12, 14,
16, 18, 20, 22, 24 (8 CKT. SHOWN)
 (FOR CONTROL OF BOW)



CORE-OUT FOR HOUSING
OPTIONS A, C, & D
CKT. SIZES 2-25
 (FOR CONTROL OF BOW)



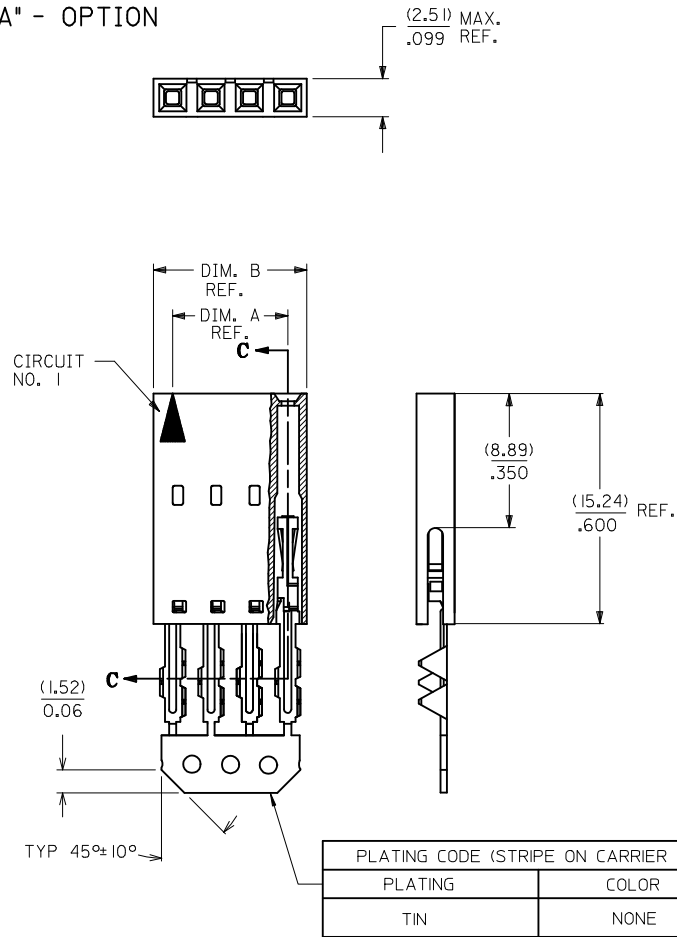
2 CKT. OPTION "G"
LATCH CONFIGURATION



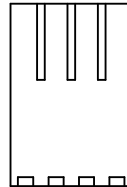
VOIDED DRAWING EC NO.: UCP/2013-2452 TDR: RWHIPPLE 2012/12/19 CHK'D: DMORGAN 2012/12/19 APPR: SMILLER 2013/01/31	QUALITY SYMBOLS ▽=0 ▽=0 ▽=0	GENERAL TOLERANCES (UNLESS SPECIFIED) <table border="1"> <thead> <tr> <th></th> <th>mm</th> <th>INCH</th> </tr> </thead> <tbody> <tr> <td>4 PLACES</td> <td>±.005</td> <td>±.0005</td> </tr> <tr> <td>3 PLACES</td> <td>±.005</td> <td>±.0005</td> </tr> <tr> <td>2 PLACES</td> <td>±.005</td> <td>±.0005</td> </tr> <tr> <td>1 PLACE</td> <td>±.005</td> <td>±.0005</td> </tr> <tr> <td>0 PLACE</td> <td>±.005</td> <td>±.0005</td> </tr> </tbody> </table>		mm	INCH	4 PLACES	±.005	±.0005	3 PLACES	±.005	±.0005	2 PLACES	±.005	±.0005	1 PLACE	±.005	±.0005	0 PLACE	±.005	±.0005	DIMENSION STYLE IN/MM DRAWN BY: RWHIPPLE DATE: 2012/12/19 CHECKED BY: SMILLER DATE: 2013/01/31	SCALE: 1:1 DESIGN UNITS: INCH THIRD ANGLE PROJECTION	TITLE: CONNECTOR FFC ASSY, SINGLE ROW FEMALE, .100 GRID molex VOID
		mm	INCH																				
	4 PLACES	±.005	±.0005																				
	3 PLACES	±.005	±.0005																				
2 PLACES	±.005	±.0005																					
1 PLACE	±.005	±.0005																					
0 PLACE	±.005	±.0005																					
MATERIAL NO.: FAMILY INDEX	DOCUMENT NO.: SDA-70430-****	SHEET NO.: 3 OF 3																					
DRAFT WHERE APPLICABLE MUST REMAIN WITHIN DIMENSIONS	SIZE: C THIS DRAWING CONTAINS INFORMATION THAT IS PROPRIETARY TO MOLEX INCORPORATED AND SHOULD NOT BE USED WITHOUT WRITTEN PERMISSION																						

12 11 10 9 8 7 6 5 4 3 2 1

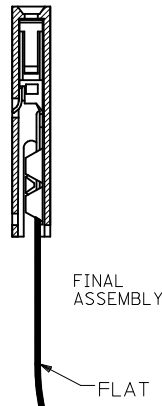
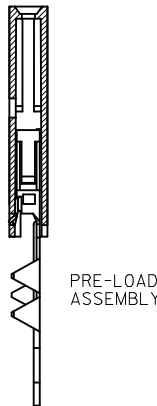
"A" - OPTION



CORE-OUT FOR HOUSING
OPTION "A"
CKT. SIZES 2-25
(FOR CONTROL OF BOW)



SECTION C-C



FLAT FLEX CABLE (F.F.C.)
(SEE NOTE 2.)

CKT. SIZE	EDP. NO.	ENG. NO.	A	B
2	015-38-8028	70430-0001	(2.54) .100	(5.05) .199
3	015-38-8038	70430-0002	(5.08) .200	(7.59) .299
4	015-38-8048	70430-0003	(7.62) .300	(10.13) .399
5	015-38-8058	70430-0004	(10.16) .400	(12.67) .499
6	015-38-8068	70430-0005	(12.70) .500	(15.21) .599
7	015-38-8078	70430-0006	(15.24) .600	(17.75) .699
8	015-38-8088	70430-0007	(17.78) .700	(20.29) .799
9	015-38-8098	70430-0008	(20.32) .800	(22.83) .899
10	015-38-8108	70430-0009	(22.86) .900	(25.37) .999
11	015-38-8118	70430-0010	(25.40) 1.000	(27.91) 1.099
12	015-38-8128	70430-0011	(27.94) 1.100	(30.45) 1.199
13	015-38-8138	70430-0012	(30.48) 1.200	(32.99) 1.299
14	015-38-8148	70430-0013	(33.02) 1.300	(35.53) 1.399
15	015-38-8158	70430-0014	(35.56) 1.400	(38.07) 1.499
16	015-38-8168	70430-0015	(38.10) 1.500	(40.61) 1.599
17	015-38-8178	70430-0016	(40.64) 1.600	(43.15) 1.699
18	015-38-8188	70430-0017	(43.18) 1.700	(45.69) 1.799
19	015-38-8198	70430-0018	(45.72) 1.800	(48.23) 1.899
20	015-38-8208	70430-0019	(48.26) 1.900	(50.77) 1.999
21	015-38-8218	70430-0020	(50.80) 2.000	(53.31) 2.099
22	015-38-8228	70430-0021	(53.34) 2.100	(55.85) 2.199
23	015-38-8238	70430-0022	(55.88) 2.200	(58.39) 2.299
24	015-38-8248	70430-0023	(58.42) 2.300	(60.93) 2.399
25	015-38-8258	70430-0024	(60.96) 2.400	(63.47) 2.499

- HOUSING MATERIAL: GLASS FILLED POLYESTER, UL94V-0, COLOR: BLACK.
TERMINAL MATERIAL: PHOSPHOR BRONZE.
PLATING TIN- 3.81 MICROMETERS/150 MICROINCHES MINIMUM TIN OVER
1.27 MICROMETERS/50 MICROINCHES MINIMUM NICKEL PLATE.
- PRE LOADED ASSEMBLY TO BE USED WITH (0.30)/.012 MAX. THICK FLAT CABLE WITH (1.57)/.062 WIDE COPPER CONDUCTORS ON (2.54)/.100 CENTERS OR, (0.13)/.005-(0.28)/.011 THICK MYLAR WITH (1.02)/.040 - (1.65)/.065 WIDE SILVER INK CONDUCTORS ON (2.54)/.100 CENTERS.
- PRODUCT SPECIFICATION: PS-70430.
- STANDARD PACKING PER PK70873-0001 SHALL BE USED.
- SEE CHART FOR CIRCUIT SIZES, "A" AND "B" DIMENSIONS.
- TWO (2) CIRCUIT ASSEMBLIES SUPPLIED AS GROUPED PAIRS.
- PART MATES WITH (0.64)/.025 SQ. PINS, (8.13)/.320 TO (5.08)/.200 LONG ON (2.54)/.100 CENTERS.
- PARTS CONFORM TO CLASS B COSMETIC SPECIFICATION PS-45499-002.

THE PRIMARY CARTON WITH A LABEL STATING
"ELV AND RoHS COMPLIANT" IS LEAD FREE.
CARTONS WITHOUT THIS LABEL MAY CONTAIN LEAD.

STANDARDIZE EC NO: UCP2013-2452 DRAWN/RH/PPLE 2012/12/14 CHKD/DORGAN 2012/12/14 APPR/SMILLER 2013/01/31	QUALITY SYMBOLS ▽=0 ▽=0 ▽=0	GENERAL TOLERANCES (UNLESS SPECIFIED)		DIMENSION STYLE MM/IN		SCALE	DESIGN UNITS INCH	THIRD ANGLE PROJECTION	
		4 PLACES ± --- ± ---		DRAWN BY DATE RAS 1986/07/21		TITLE ASSEMBLY, CONNECTOR FFC FEMALE SINGLE ROW (2.54)/.100 GRID			
		3 PLACES ± --- ± .010		CHECKED BY DATE MJM 1986/07/21		molex			
		2 PLACES ± 0.25 ± .015		APPROVED BY DATE SMILLER 2013/01/31					
1 PLACE ± 0.38 ± ---		MATERIAL NO.		DOCUMENT NO.		SHEET NO.			
0 PLACE ± --- ± ---		ANGULAR ±1/2°		SEE TABLE		SDA-70430-0001-0024		1 OF 1	
DRAFT WHERE APPLICABLE MUST REMAIN WITHIN DIMENSIONS		SIZE C		THIS DRAWING CONTAINS INFORMATION THAT IS PROPRIETARY TO MOLEX INCORPORATED AND SHOULD NOT BE USED WITHOUT WRITTEN PERMISSION					