



Chipsmall Limited consists of a professional team with an average of over 10 year of expertise in the distribution of electronic components. Based in Hongkong, we have already established firm and mutual-benefit business relationships with customers from,Europe,America and south Asia,supplying obsolete and hard-to-find components to meet their specific needs.

With the principle of “Quality Parts,Customers Priority,Honest Operation,and Considerate Service”,our business mainly focus on the distribution of electronic components. Line cards we deal with include Microchip,ALPS,ROHM,Xilinx,Pulse,ON,Everlight and Freescale. Main products comprise IC,Modules,Potentiometer,IC Socket,Relay,Connector.Our parts cover such applications as commercial,industrial, and automotives areas.

We are looking forward to setting up business relationship with you and hope to provide you with the best service and solution. Let us make a better world for our industry!



## Contact us

Tel: +86-755-8981 8866 Fax: +86-755-8427 6832

Email & Skype: info@chipsmall.com Web: www.chipsmall.com

Address: A1208, Overseas Decoration Building, #122 Zhenhua RD., Futian, Shenzhen, China



- **British Standard VT Fuse Links.**
- **A range of voltage transformer primary Fuse Links to BS2692-1 and IEC60282-1.**
- **Wide range of ratings from 1 kV to 36 kV.**
- **3.15 Amp industry standard current ratings.**
- **CAV range with ratings from 3.6kV to 38kV.**



## Bussmann Voltage and Auxiliary Transformer Fuse Links

Bussmann manufacture a wide range of voltage transformer (VT) fuse links. In North America they are referred to as Potential Transformer fuses. These fuse links are designed for use in the primary side of voltage transformers to provide system isolation in the event of faults occurring in the transformer circuit.

Voltage transformer fuse links, have a preferred current rating of 3.15A. Experience has shown that there is a risk of spurious operation by transient overcurrents where lower current ratings are used. In addition, in order to minimise the risk of deterioration of the fine fuse elements caused by corona, it is desirable to mount the fuse links so that the earthed metal is not in the immediate vicinity of the part of the barrel between the ferrules.

Higher current and 'E' ratings are available for special applications, including auxiliary transformers.

A range of VT fuse links with a breaking capacity of 200kA for use at the output terminals of large turbo alternators can also be ordered. For further information, please contact Bussmann application engineers.

Types prefixed 'A' or 'N' are suitable for use in Air only. Types prefixed 'O' may be used under oil.

- **For DIN dimensioned voltage transformer and auxiliary transformer fuse links, please refer to DIN dimensioned fuse link section.**

### Selection Table

#### Table of ratings for voltage transformer fuses 1.1 - 36kV

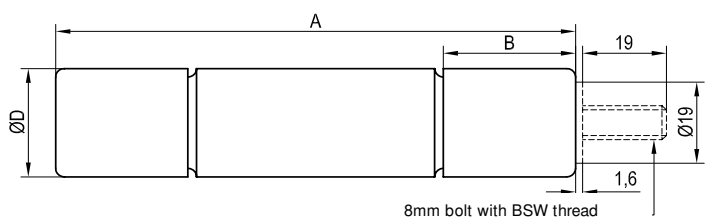
Part Number	Voltage Rating	Current Rating	Breaking Capacity	Cold Resistance	Joule Intergral (I <sup>2</sup> t)		Length	Diameter Ø	Weight
					A <sup>2</sup> s				
	U <sub>n</sub> kV	I <sub>n</sub> A	I <sub>1</sub> kA	Ω	Minimum Pre-Arcing	Maximum Total Clearing	mm	mm	kg
1.1NBUN*2	1.1	2	50	0.145	6.3X10 <sup>0</sup>	1.8X10 <sup>1</sup>	86	25.4	0.12
1.1NBUN*3.15	1.1	3.15	50	0.107	1.2X10 <sup>1</sup>	3.4X10 <sup>1</sup>	86	25.4	0.12
1.1NBUN*6.3	1.1	6.3	50	0.065	3.2X10 <sup>1</sup>	9.2X10 <sup>1</sup>	86	25.4	0.12
3.6ABWN*3.15	3.6	3.15	50	0.358	6.3X10 <sup>0</sup>	1.8X10 <sup>1</sup>	142	25.4	0.19
3.6ABWN*6.3	3.6	6.3	50	0.120	4.8X10 <sup>1</sup>	3.1X10 <sup>2</sup>	142	25.4	0.19
3.6ABCN*3.15	3.6	3.15	50	0.358	6.3X10 <sup>0</sup>	1.8X10 <sup>1</sup>	195	25.4	0.245
3.6ABCN*6.3	3.6	6.3	50	0.120	4.8X10 <sup>1</sup>	3.1X10 <sup>2</sup>	195	25.4	0.245
3.6ABCN*10	3.6	10	50	0.080	1.1X10 <sup>2</sup>	7.0X10 <sup>2</sup>	195	25.4	0.245
5.5AMWNA0.5E	5.5	0.5	50	32.5	1.2X10 <sup>0</sup>	3.5X10 <sup>0</sup>	142	20.6	0.114
5.5AMWNA1E	5.5	1	50	16.0	5.0X10 <sup>0</sup>	1.4X10 <sup>1</sup>	142	20.6	0.114
5.5AMWNA2E	5.5	2	50	0.584	4.0X10 <sup>0</sup>	1.2X10 <sup>1</sup>	142	20.6	0.114
5.5AMWNA3E	5.5	3	50	0.320	1.8X10 <sup>1</sup>	1.1X10 <sup>2</sup>	142	20.6	0.114
5.5AMWNA4E	5.5	4	50	0.190	4.6X10 <sup>1</sup>	3.0X10 <sup>2</sup>	142	20.6	0.114
5.5AMWNA5E	5.5	5	50	0.147	7.9X10 <sup>1</sup>	5.1X10 <sup>2</sup>	142	20.6	0.114
5.5ABWNA0.5E	5.5	0.5	50	50.2	0.49X10 <sup>0</sup>	1.4X10 <sup>0</sup>	142	25.4	0.19
5.5ABWNA1E	5.5	1	50	25.1	2.0X10 <sup>0</sup>	5.7X10 <sup>0</sup>	142	25.4	0.19
5.5ABWNA2E	5.5	2	50	1.08	1.2X10 <sup>0</sup>	3.4X10 <sup>0</sup>	142	25.4	0.19
5.5ABWNA3E	5.5	3	50	0.469	6.3X10 <sup>0</sup>	1.8X10 <sup>1</sup>	142	25.4	0.19
5.5ABWNA5E	5.5	5	50	0.199	3.2X10 <sup>1</sup>	2.0X10 <sup>2</sup>	142	25.4	0.19
7.2ABWN*3.15	7.2	3.15	45	0.614	6.3X10 <sup>0</sup>	4.0X10 <sup>1</sup>	142	25.4	0.19
7.2ABWN*6.3	7.2	6.3	45	0.240	4.8X10 <sup>1</sup>	3.1X10 <sup>2</sup>	142	25.4	0.19
7.2ABCN*3.15	7.2	3.15	45	0.614	6.3X10 <sup>0</sup>	4.0X10 <sup>1</sup>	195	25.4	0.245
7.2ABCN*6.3	7.2	6.3	45	0.240	4.8X10 <sup>1</sup>	3.1X10 <sup>2</sup>	195	25.4	0.245
7.2OBCN*3.15	7.2	3.15	45	0.614	6.3X10 <sup>0</sup>	4.0X10 <sup>1</sup>	195	25.4	0.245
7.2OBCN*6.3	7.2	6.3	45	0.240	4.8X10 <sup>1</sup>	3.1X10 <sup>2</sup>	195	25.4	0.245
7.2OBWN*3.15	7.2	3.15	45	0.614	6.3X10 <sup>0</sup>	4.0X10 <sup>1</sup>	142	25.4	0.19
7.2OBWN*6.3	7.2	6.3	45	0.240	4.8X10 <sup>1</sup>	3.1X10 <sup>2</sup>	142	25.4	0.19
12ABCN*3.15	12	3.15	45	1.21	6.3X10 <sup>0</sup>	1.8X10 <sup>1</sup>	195	25.4	0.245
12OBCN*3.15	12	3.15	45	1.21	6.3X10 <sup>0</sup>	1.8X10 <sup>1</sup>	195	25.4	0.245
15.5ABFN*3.15	15.5	3.15	32	1.24	6.3X10 <sup>0</sup>	4.0X10 <sup>1</sup>	254	25.4	0.31
15.5OBFN*3.15	15.5	3.15	32	1.24	6.3X10 <sup>0</sup>	4.0X10 <sup>1</sup>	254	25.4	0.31
17.5ABGN*3.15	17.5	3.15	35	1.45	6.3X10 <sup>0</sup>	4.0X10 <sup>1</sup>	359	25.4	0.43
17.5OBGN*3.15	17.5	3.15	35	1.45	6.3X10 <sup>0</sup>	4.0X10 <sup>1</sup>	359	25.4	0.43
24ABGN*3.15	24	3.15	25	2.00	6.3X10 <sup>0</sup>	4.0X10 <sup>1</sup>	359	25.4	0.43
24OBGN*3.15	24	3.15	25	2.00	6.3X10 <sup>0</sup>	4.0X10 <sup>1</sup>	359	25.4	0.43
36OBGN*3.15	36	3.15	31.5	2.05	1.2X10 <sup>1</sup>	7.7X10 <sup>1</sup>	359	25.4	0.43

A 36kV AGBN\* 3.15A is also available for certain indoor applications. Please contact Bussmann's application engineers for further information.

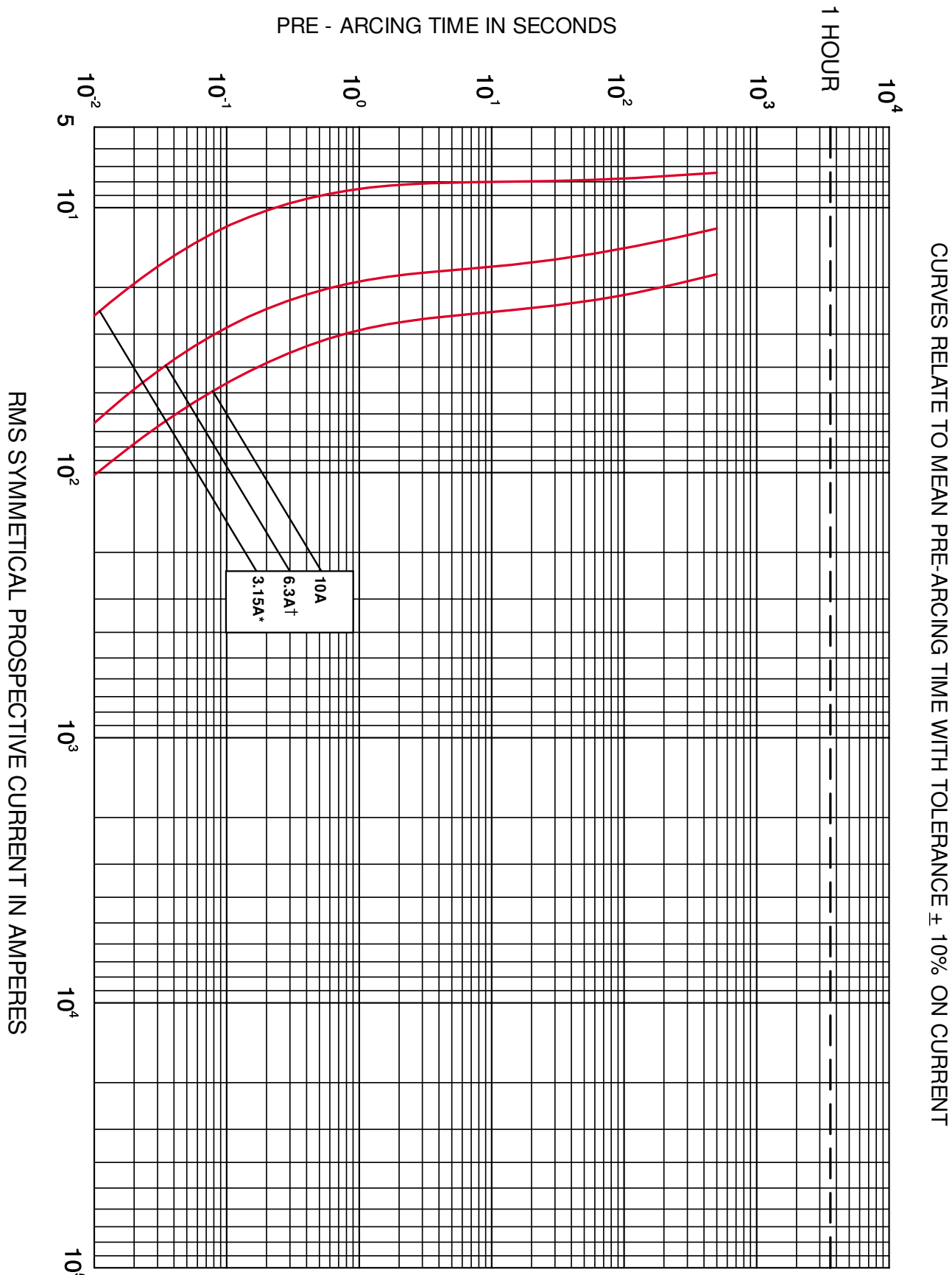
★ The last letter of the ordering code on these items is normally either 'A' or '22', please refer to 'how to order' page 61 for an explanation.

### Fuse Link type: TAG type "A" Ferrule and "22"

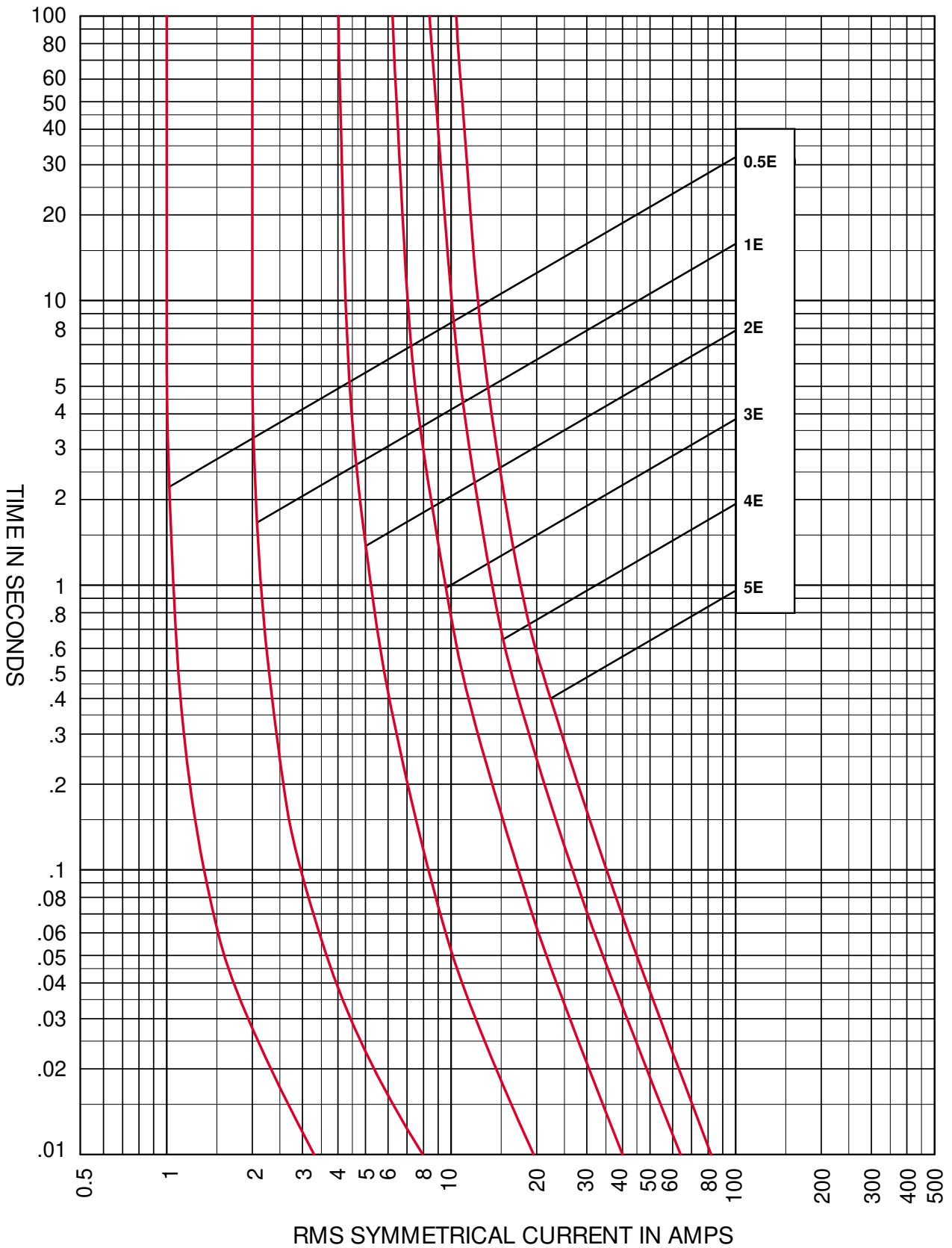
FUSE LINK TYPE	A	B	D
NBUN*	86	17.5	25.4
ABWNA	142	30	25.4
AMWNA	142	16	20.5
OBWN*	142	30	25.4
ABCN*	195	30	25.4
OBCN*	195	30	25.4
ABFN*	254	30	25.4
OBFN*	254	30	25.4
ABGN*	359	30	25.4
OBGN*	359	30	25.4



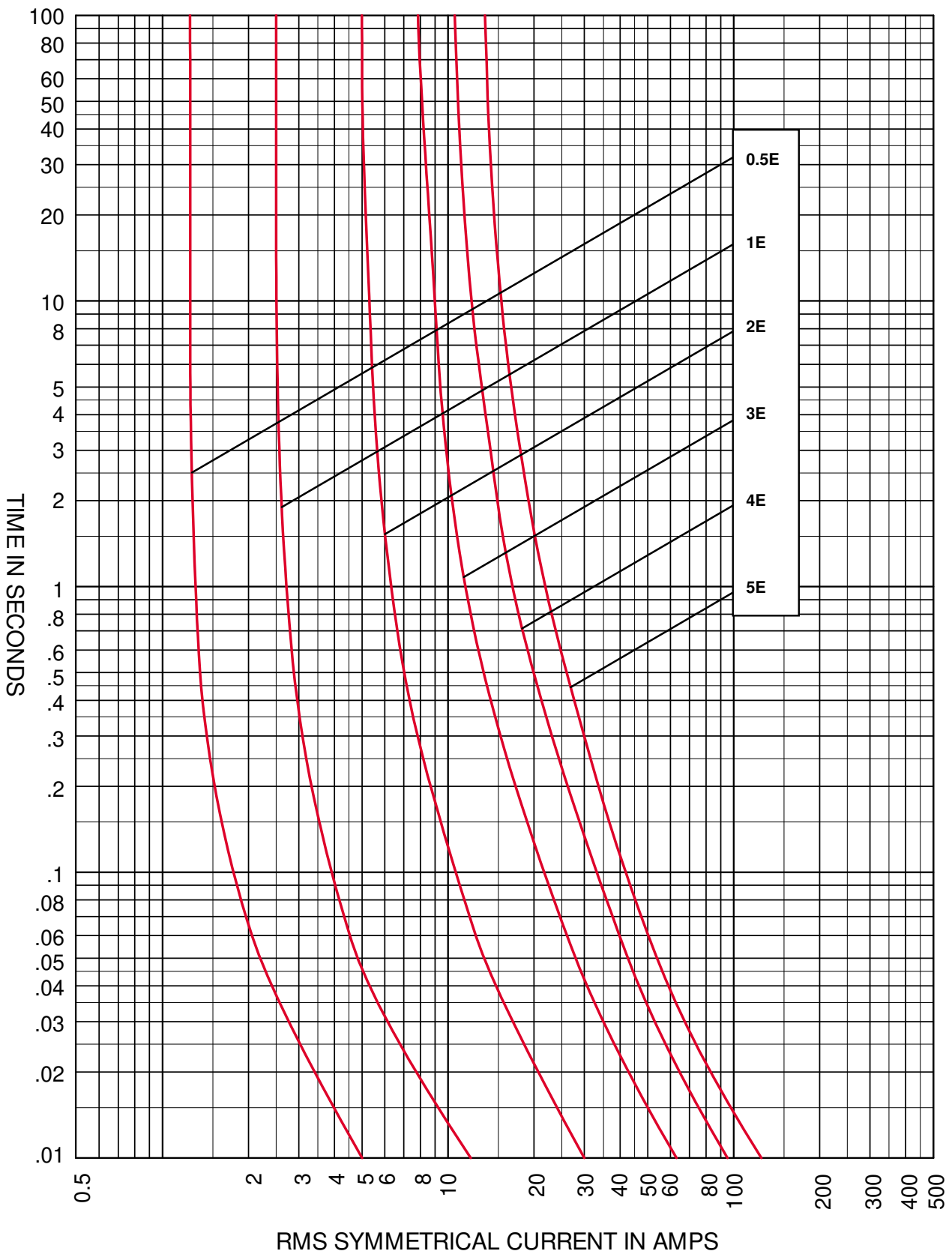
Ferrule Fuse Link Tag type "A" shown in full lines and "22" Tag shown in dotted lines

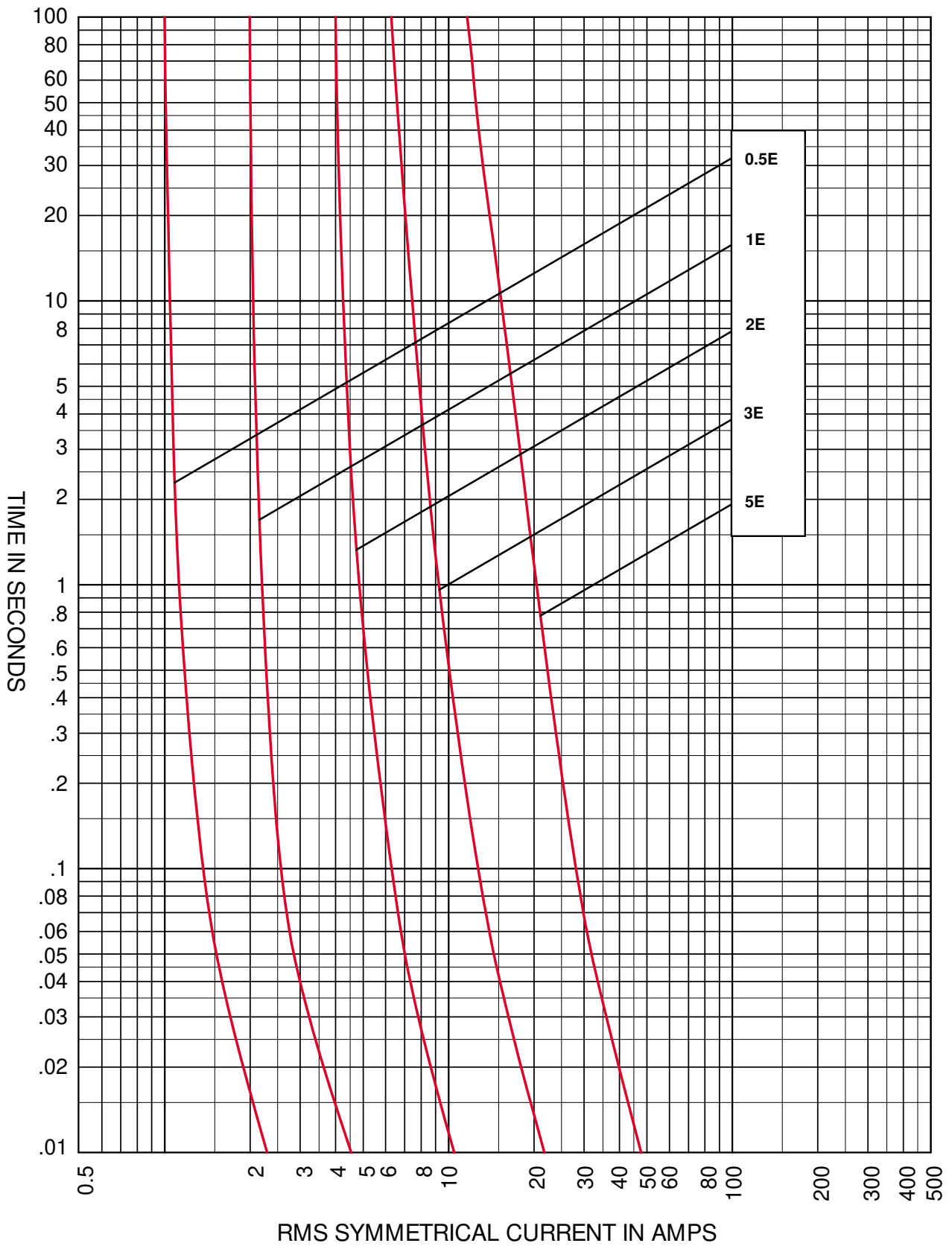


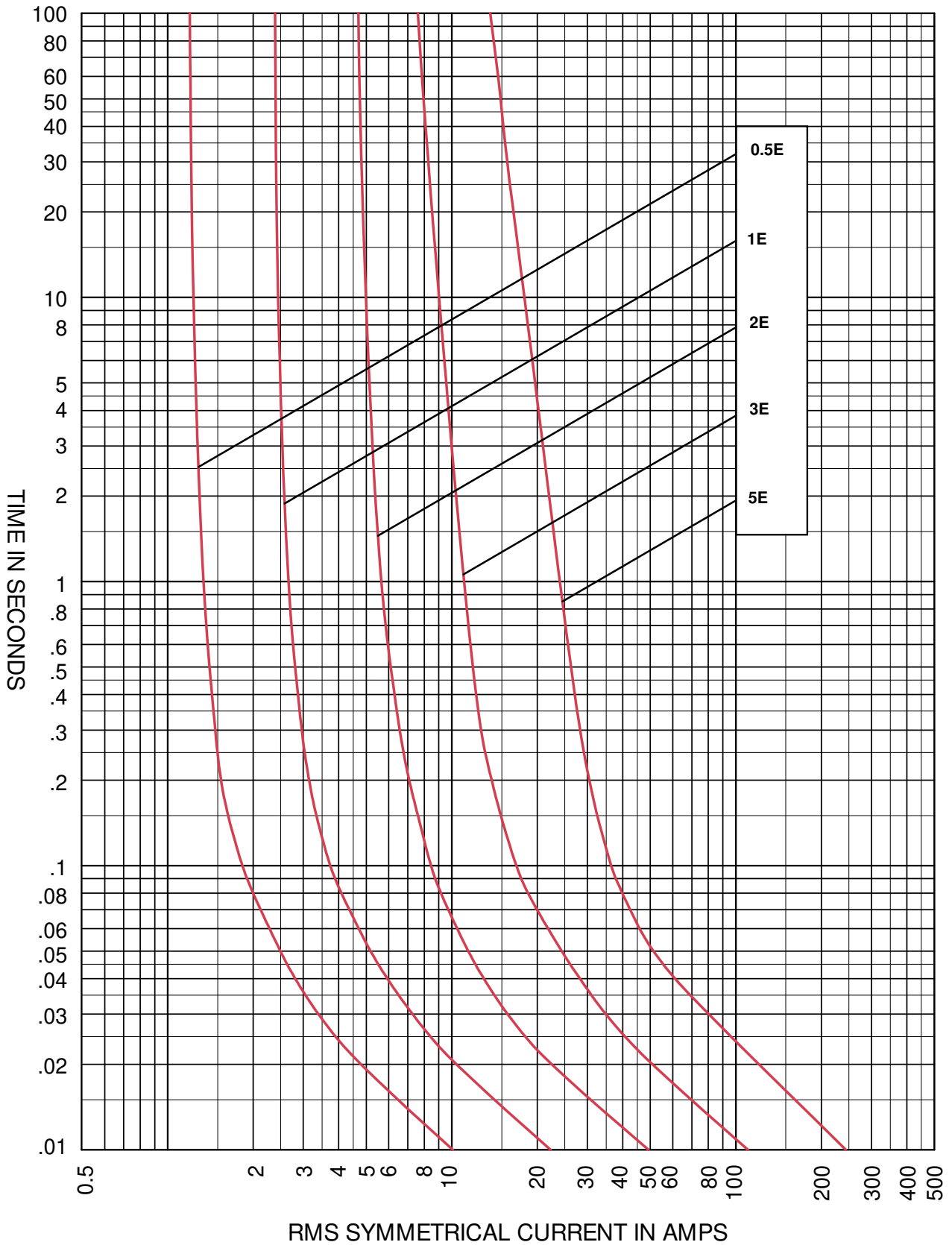
\* Curve valid for all 3.15A ratings shown in the selection table.  
 † Curve valid for all 6.3A ratings shown in the selection table.



Time current characteristics for E rated 5.5kV VT Fuse Links, fuse type ABWNA (maximum melting times)







### Selection Table

Table of ratings for voltage transformer fuses, 3.6 - 38kV type CAV

Part Number	Voltage Rating	Current Rating	Breaking Capacity	Cold resistance in free air at rated current $\Omega$	Joule Integral ( $I^2t$ )		Length mm	Diameter $\varnothing$ mm	Weight kg
	$U_n$ kV	$I_n$ A	$I_1$ kA		A <sup>2</sup> s				
					Minimum Pre-Arcing	Maximum Total Clearing			
3.6CAV2	3.6	2	50	0.492	$6.2 \times 10^0$	$1.8 \times 10^1$	220	41.3	0.7
5.5 CAV15E	5.5	15	50	0.488	$5.5 \times 10^2$	$3.5 \times 10^3$	187	41.3	0.6
5.5CAVH0.5E	5.5	0.5	50	12.1	$1.4 \times 10^1$	$9.0 \times 10^1$	187	41.3	0.6
5.5CAVH1E	5.5	1	50	12.1	$1.4 \times 10^1$	$9.0 \times 10^1$	187	41.3	0.6
5.5CAVH2E	5.5	2	50	0.388	$1.8 \times 10^1$	$1.1 \times 10^2$	187	41.3	0.6
7.2CAV2	7.2	2	40	0.893	$6.2 \times 10^0$	$1.8 \times 10^1$	220	41.3	0.7
7.2CAV4	7.2	4	40	0.503	$2.0 \times 10^1$	$5.7 \times 10^1$	220	41.3	0.7
7.2CAV6	7.2	6	40	0.321	$4.8 \times 10^1$	$1.4 \times 10^2$	220	41.3	0.7
7.2CAV10	7.2	10	40	0.215	$1.1 \times 10^2$	$3.2 \times 10^2$	220	41.3	0.7
12CAV2	12	2	40	1.34	$6.2 \times 10^0$	$1.8 \times 10^1$	220	41.3	0.7
15.5CAV0.5E	15.5	0.5	80	151	$0.5 \times 10^0$	$1.5 \times 10^0$	327	41.3	0.9
15.5CAV1E	15.5	1	80	75.4	$2.0 \times 10^0$	$5.8 \times 10^0$	327	41.3	0.9
15.5CAV2E	15.5	2	80	32.3	$1.2 \times 10^0$	$3.5 \times 10^0$	327	41.3	0.9
15.5CAV3E	15.5	3	80	16.2	$4.8 \times 10^0$	$1.4 \times 10^1$	327	41.3	0.9
15.5CAV5E	15.5	5	80	0.659	$2.0 \times 10^1$	$1.3 \times 10^2$	327	41.3	0.9
15.5CAV7E	15.5	7	80	0.375	$7.1 \times 10^1$	$4.5 \times 10^2$	327	41.3	0.9
15.5CAVH0.5E	15.5	0.5	80	30.1	$1.4 \times 10^1$	$9.0 \times 10^1$	327	41.3	0.9
15.5CAVH1E	15.5	1	80	30.1	$1.4 \times 10^1$	$9.0 \times 10^1$	327	41.3	0.9
15.5CAVH2E	15.5	2	80	0.947	$1.8 \times 10^1$	$1.1 \times 10^2$	327	41.3	0.9
17.5CAV2	17.5	2	40	1.69	$6.3 \times 10^0$	$1.8 \times 10^1$	220	41.3	0.7
17.5CAV4	17.5	4	40	0.611	$4.8 \times 10^1$	$1.4 \times 10^2$	220	41.3	0.7
17.5CAV6	17.5	6	40	0.362	$1.4 \times 10^2$	$4.0 \times 10^2$	220	41.3	0.7
17.5CAV10	17.5	10	40	0.239	$3.2 \times 10^2$	$9.2 \times 10^2$	220	41.3	0.7
24CAV2	24	2	40	2.54	$6.2 \times 10^0$	$1.8 \times 10^1$	340	41.3	1.0
24CAV3	24	3	40	1.43	$2.0 \times 10^1$	$5.7 \times 10^1$	340	41.3	1.0
24CAV4	24	4	40	0.916	$4.8 \times 10^1$	$1.4 \times 10^2$	340	41.3	1.0
36CAV2	36	2	40	3.12	$6.2 \times 10^0$	$1.8 \times 10^1$	440	41.3	1.2
36CAV4	36	4	40	1.12	$4.8 \times 10^1$	$1.4 \times 10^2$	440	41.3	1.2
38CAV4E	38	4	40	2.42	$1.2 \times 10^1$	$3.4 \times 10^1$	440	41.3	1.2
38CAVH0.5E	38	0.5	40	66.6	$1.4 \times 10^1$	$9.0 \times 10^1$	440	41.3	1.2
38CAVH1E	38	1	40	66.6	$1.4 \times 10^1$	$9.0 \times 10^1$	440	41.3	1.2
38CAVH2E	38	2	40	2.20	$1.8 \times 10^1$	$1.1 \times 10^2$	440	41.3	1.2

■ These Voltage Transformer fuse links are available in the ratings shown in the table above. CAV fuse links are suitable for indoor use in air only. Type CAVH Fuse links are fitted with striker pins which may be used for indication purposes.

### Fuse Link type: CAV (Shown with striker fitted)

FUSE LINK TYPE	A
3.6CAV	220
5.5CAV	187
5.5CAVH	187
7.2CAV	220
12CAV	220
15.5CAV	327
15.5CAVH	327
17.5CAV	220
24CAV	340
36CAV	440
38CAV	440
38CAVH	440

