



Chipsmall Limited consists of a professional team with an average of over 10 year of expertise in the distribution of electronic components. Based in Hongkong, we have already established firm and mutual-benefit business relationships with customers from,Europe,America and south Asia,supplying obsolete and hard-to-find components to meet their specific needs.

With the principle of "Quality Parts,Customers Priority,Honest Operation,and Considerate Service",our business mainly focus on the distribution of electronic components. Line cards we deal with include Microchip,ALPS,ROHM,Xilinx,Pulse,ON,Everlight and Freescale. Main products comprise IC,Modules,Potentiometer,IC Socket,Relay,Connector.Our parts cover such applications as commercial,industrial, and automotives areas.

We are looking forward to setting up business relationship with you and hope to provide you with the best service and solution. Let us make a better world for our industry!



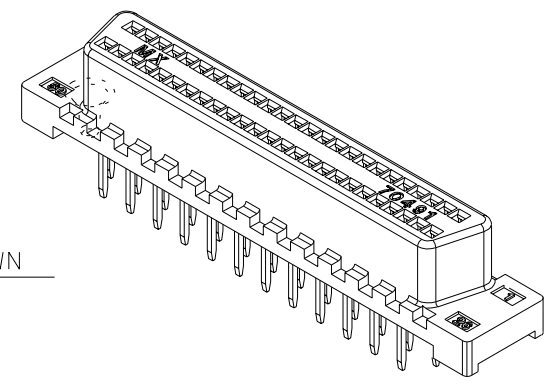
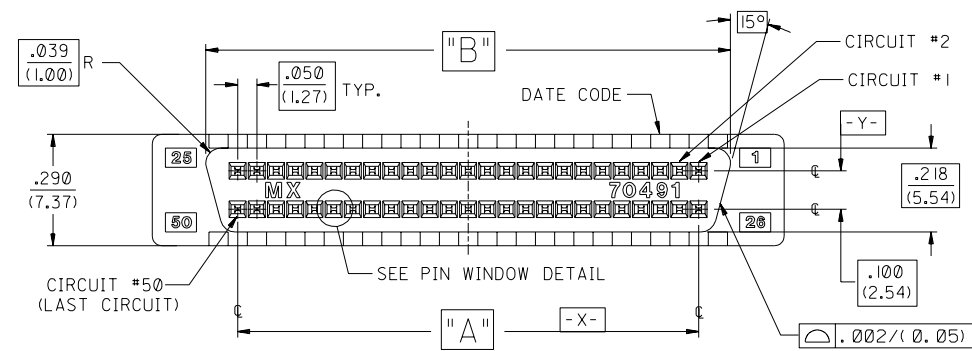
Contact us

Tel: +86-755-8981 8866 Fax: +86-755-8427 6832

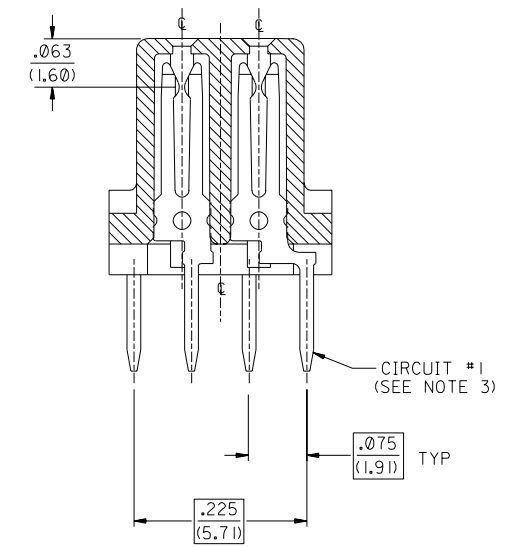
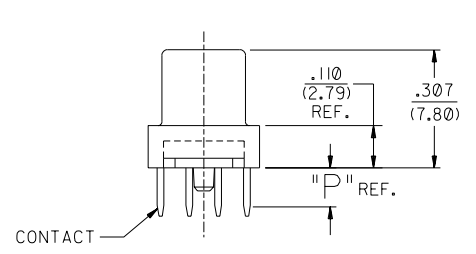
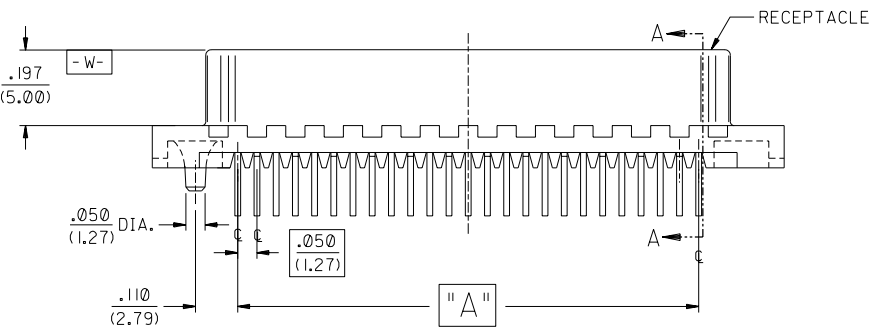
Email & Skype: info@chipsmall.com Web: www.chipsmall.com

Address: A1208, Overseas Decoration Building, #122 Zhenhua RD., Futian, Shenzhen, China

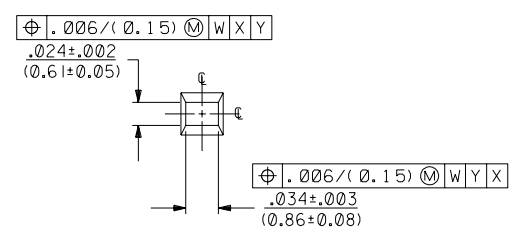
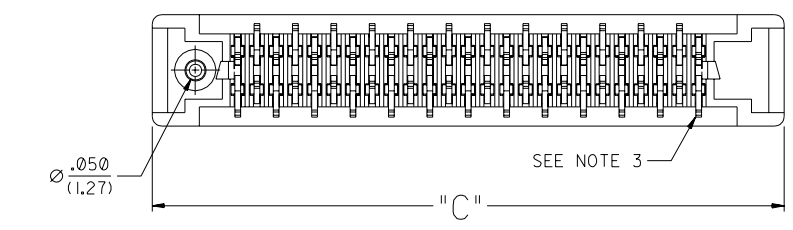




50 CIRCUIT SHOWN



SECTION "A-A"
SCALE 8:1



PIN WINDOW DETAIL
SCALE 10:1

NOTES:

1. SEE SHEET 2 FOR PART NO.S AND CHARTED DIMENSIONS AND P.C. BOARD LAYOUT.
2. 50 CIRCUIT SHOWN FOR ILLUSTRATION PURPOSES ONLY.
3. TAIL PATTERN FIXED AT CIRCUIT NO. (1) POSITION FOR ALL CIRCUIT SIZES SHOWN.

2	1
1	1
MFG. SH.	REV.

DIMENSIONS SHOWN (METRIC) INCH UNLESS OTHERWISE SPECIFIED TOLERANCES: ANGULAR $\pm 1/2^\circ$		$\nabla = 0$ $\blacktriangledown = 0$ REVISE ONLY ON CAD SYSTEM TITLE SALES SCSI ALL-PLASTIC VERTICAL RECEPTACLE ASSEMBLY WITH PEG MOLEX INCORPORATED SHEET NO. DATE LITSE,ILL. 60532 U.S.A. 1 of 2 06/17/92 PART NO. SDA-70491-2*** DRWG. NO. SEE SHEET 2	
3 PLACE $\pm .010$	INCH METRIC	DRAFT WHERE APPLICABLE MUST REMAIN WITHIN DIMENSIONS DRWG. BY J. Long CHK'D BY DCB APP'D. BY J. D. SCALE 4:1	
2 PLACE $\pm \dots \pm 0.25$		THIS DRAWING CONTAINS INFORMATION THAT IS PROPRIETARY TO MOLEX INC. AND SHOULD NOT BE USED WITHOUT WRITTEN PERMISSION.	
1 PLACE --- \pm ---		DIV. SIZE TC C	
LTR. REVISIONS	LTR. REVISIONS		

ITEM NO.	ENG NO.	CKT. SIZE	PLATING	DIM. A		DIM. B		DIM. C		DIM. P TAIL LENGTH	RECOMMENDED PCB		
				INCH	MM	INCH	MM	INCH	MM		INCH	MM	
	015-87-0301	70491-2001	50	GOLD 30	1.200	30.48	1.366	34.70	1.645	41.78	.125	.062 OR .093	1.57 OR 2.36
X	015-87-0302	70491-2002										OR	OR
	015-87-0303	70491-2003	50	GOLD 30	1.200	30.48	1.366	34.70	1.645	41.78	.165	.125	3.18
X	015-87-0304	70491-2004											
	015-87-0305	70491-2005	68	GOLD 30	1.650	41.91	1.816	46.13	2.095	53.21	.125	.062 OR .093	1.57 OR 2.36
X	015-87-0306	70491-2006										OR	OR
	015-87-0307	70491-2007	68	GOLD 30	1.650	41.91	1.816	46.13	2.095	53.21	.165	.125	3.18
X	015-87-0308	70491-2008											
	015-87-0309	70491-2009	50	GOLD 30	1.200	30.48	1.366	34.70	1.645	41.78	.080	.062	1.57
X	015-87-0310	70491-2010											
	015-87-0311	70491-2011	68	GOLD 30	1.650	41.91	1.816	46.13	2.095	53.21	.080	.062	1.57
X	015-87-0312	70491-2012											
	015-87-0313	70491-2013	68	GOLD 15	1.650	41.91	1.816	46.13	2.095	53.21	.125	.062 OR .093	1.57 OR 2.36
X	015-87-0314	70491-2014	68	GOLD 15	1.650	41.91	1.816	46.13	2.095	53.21	.080	.062	1.57

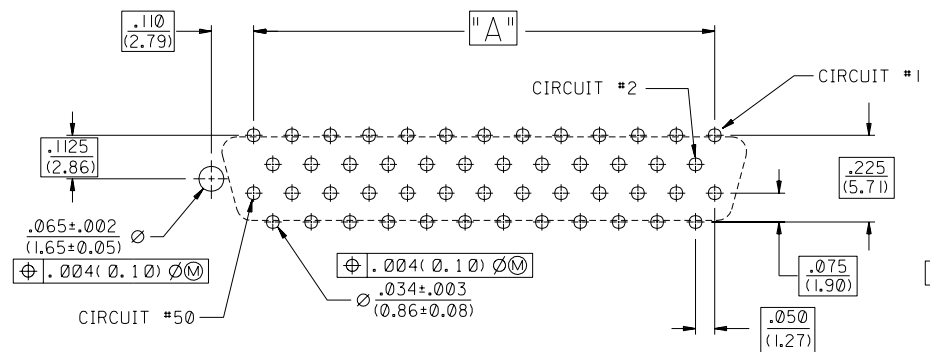
ASSEMBLY NO. LEGEND:

A-70491-2 ***

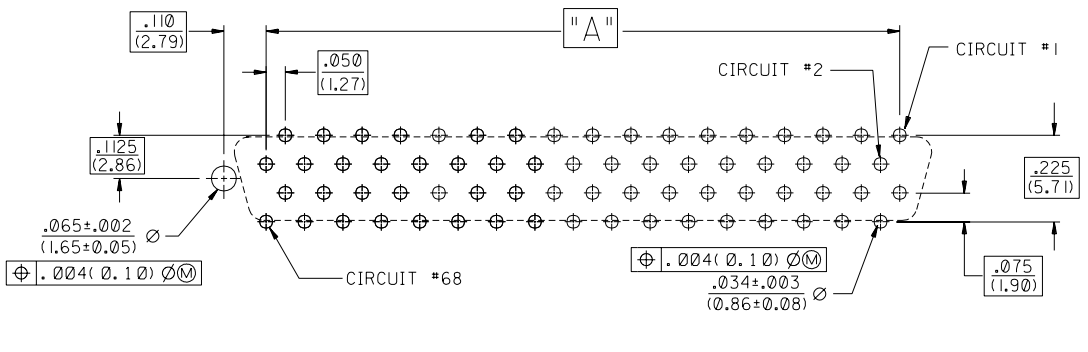
CIRCUIT SIZE, PLATING, AND TAIL LENGTH

LEFT PEG OPTION

X = INDICATED "NOT TOOLED"



RECOMMENDED 50 CKT. P.C. BOARD LAYOUT
CONNECTOR SIDE



RECOMMENDED 68 CKT. P.C. BOARD LAYOUT
CONNECTOR SIDE

NOTES:

- REFER TO PS-79058 PRODUCT SPEC. FOR ELECTRICAL, MECHANICAL AND ENVIRONMENTAL SPECIFICATIONS.
- MATERIAL:
RECEPTACLE HOUSING: GLASS FILLED LIQUID CRYSTAL POLYMER (LCP);
COLOR: BLACK; UL 94V-0
CONTACTS: PHOSPHOR BRONZE
- PACKAGING:
PARTS PACKAGED IN TUBES PER PK-70873-0427.
- FINISHES: TERMINALS:
(GOLD 15)
SELECTIVE GOLD: THICKNESS= 15 MICROINCHES/(0.38 MICROMETERS) MINIMUM.
SELECTIVE TIN: THICKNESS= 75 MICROINCHES/(1.90 MICROMETERS) MINIMUM.
NICKEL UNDERPLATE OVERALL.
(GOLD 30)
SELECTIVE GOLD: THICKNESS= 30 MICROINCHES/(0.76 MICROMETERS) MINIMUM.
SELECTIVE TIN: THICKNESS= 75 MICROINCHES/(1.90 MICROMETERS) MINIMUM.
NICKEL UNDERPLATE OVERALL.

NOTE FOR LEAD FREE CONVERSION:

THE PRIMARY SHIPPING CARTON WILL BE LABELED "COMPLIANT TO ROHS DIRECTIVE 2002/95/EC AND ELV ANNEX II OF DIRECTIVE 2000/53/EC". CARTONS WITHOUT THIS LABEL MAY CONTAIN PRODUCT WITH LEAD.

LTR.	REVISIONS	LTR.	REVISIONS

DIMENSIONS SHOWN (METRIC) INCH	
UNLESS OTHERWISE SPECIFIED TOLERANCES: ANGULAR 1/2°	
5 PLACE ± .010	---
2 PLACE ± ---	± 0.25
1 PLACE ---	± ---

MFG. SH. REV. TITLE SALES SCSI ALL-PLASTIC VERTICAL RECEPTACLE ASSEMBLY WITH PEG FROM: MOLEX INCORPORATED L15LE,ILL. 60532 U.S.A. SHEET NO. 2 DATE 06/17/92 PART NO. SEE CHART DRWG. NO. SDA-70491-2*** FILE NAME 51049122.DGN THIS DRAWING CONTAINS INFORMATION THAT IS PROPRIETARY TO MOLEX INC. AND SHOULD NOT BE USED WITHOUT WRITTEN PERMISSION.	DRAFT WHERE APPLICABLE MUST REMAIN WITHIN DIMENSIONS DRG. BY J. Long CHK'D BY DCB APP'D BY J.D. SCALE :
--	--

70491