



Chipsmall Limited consists of a professional team with an average of over 10 year of expertise in the distribution of electronic components. Based in Hongkong, we have already established firm and mutual-benefit business relationships with customers from,Europe,America and south Asia,supplying obsolete and hard-to-find components to meet their specific needs.

With the principle of “Quality Parts,Customers Priority,Honest Operation,and Considerate Service”,our business mainly focus on the distribution of electronic components. Line cards we deal with include Microchip,ALPS,ROHM,Xilinx,Pulse,ON,Everlight and Freescale. Main products comprise IC,Modules,Potentiometer,IC Socket,Relay,Connector.Our parts cover such applications as commercial,industrial, and automotives areas.

We are looking forward to setting up business relationship with you and hope to provide you with the best service and solution. Let us make a better world for our industry!



## Contact us

Tel: +86-755-8981 8866 Fax: +86-755-8427 6832

Email & Skype: info@chipsmall.com Web: www.chipsmall.com

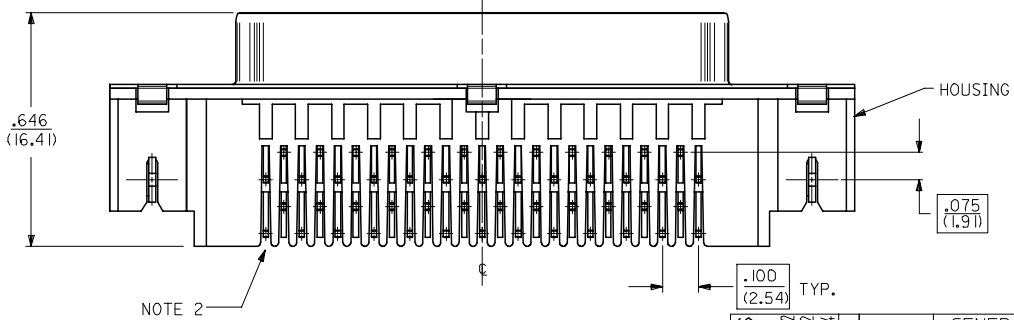
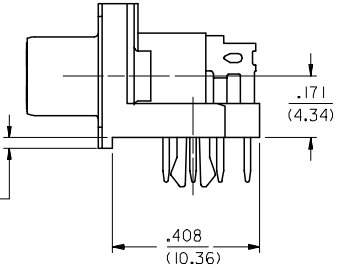
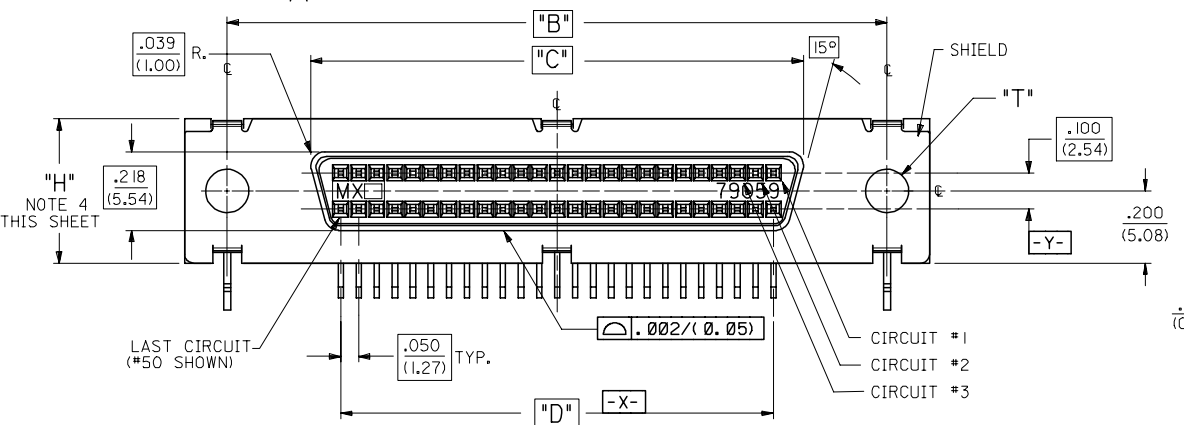
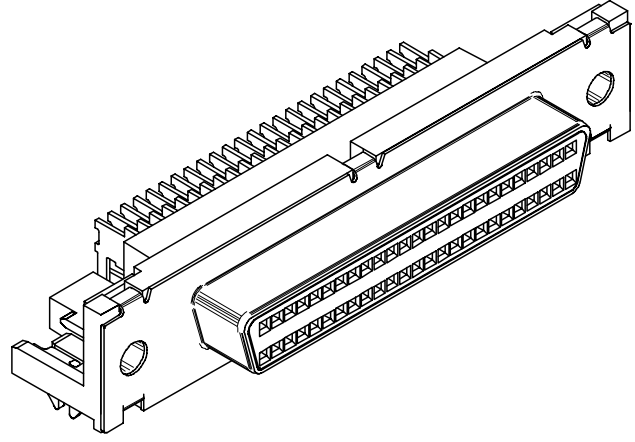
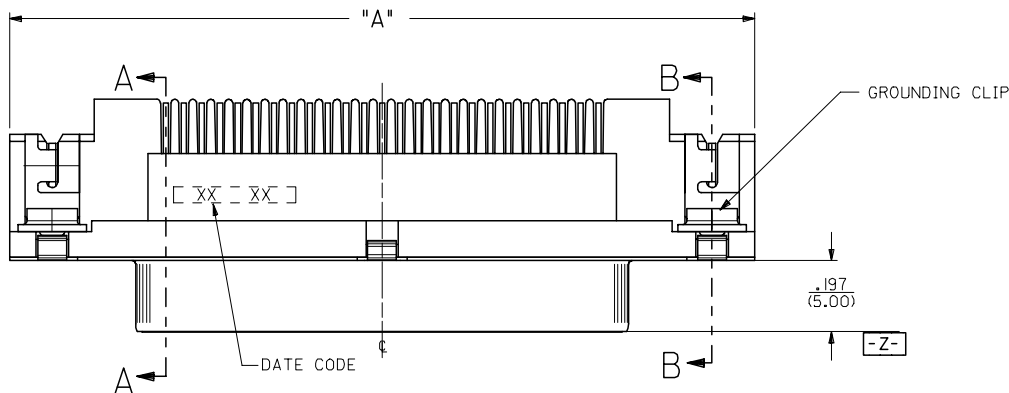
Address: A1208, Overseas Decoration Building, #122 Zhenhua RD., Futian, Shenzhen, China



13 12 11 10 9 8 7 6 5 4 3 2 1

J  
I  
H  
G  
F  
E  
D  
C  
B  
A

J  
I  
H  
G  
F  
E  
D  
C  
B  
A



- NOTES:
- SEE SHEETS 3 AND 4 FOR PART NO.'S. AND CHARTED DIMENSIONS.
  - TAIL / PCB PATTERN FIXED AT LAST CIRCUIT POSITIONS FOR ALL CIRCUIT SIZES AT END SHOWN. (B12).
  - SEE SHEET 2 FOR ALL ADDITIONAL NOTES.
  - THE 'H' DIMENSION APPLIES ONLY TO THE PLASTIC HOUSING AND NOT THE SHIELD.

|   |             |                             |
|---|-------------|-----------------------------|
| REMOVE OBSOLETE #S<br>FC NO: UCP2006-2901 2006/06/12<br>DRAWN:MS:BARRA 2006/06/12<br>CHKD:BBARKER 2006/06/12<br>APPR:SMILLER 2006/06/14 | DESCRIPTION | QUALITY SYMBOLS<br>=0<br>=0 |
|---|-------------|-----------------------------|

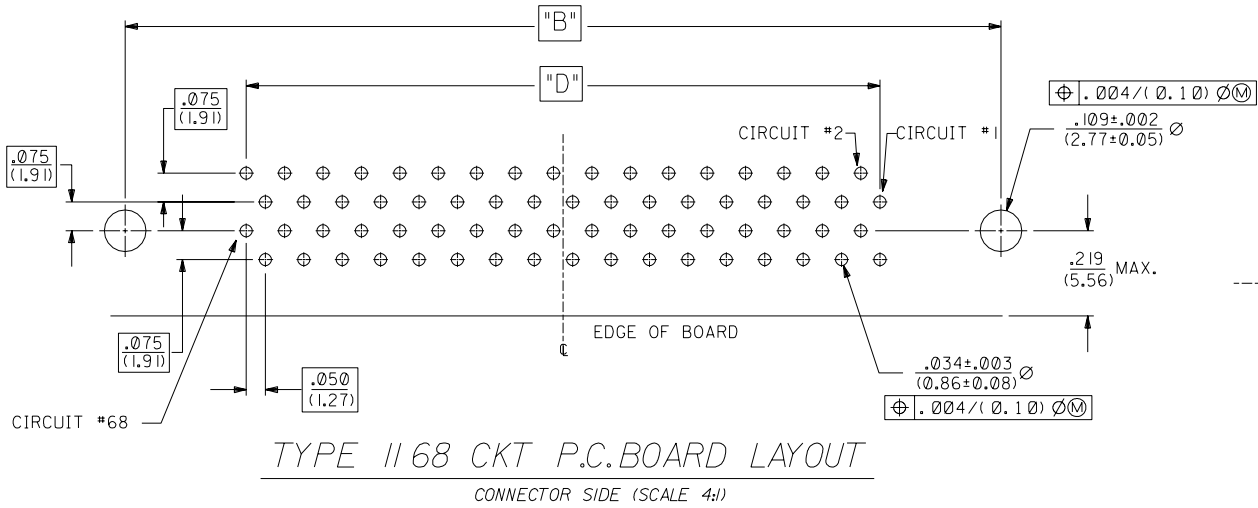
| GENERAL TOLERANCES (UNLESS SPECIFIED)                |        |
|--|--------|
| mm   | INCH   |
| 4 PLACES ± ---                                       | ± ---  |
| 3 PLACES ± ---                                       | ± .005 |
| 2 PLACES ± 0.13                                      | ± ---  |
| 1 PLACE ± ---  | ± ---  |
| ANGULAR ±1/2°  |        |
| DRAFT WHERE APPLICABLE MUST REMAIN WITHIN DIMENSIONS |        |

| DIMENSION STYLE |                |
|-----------------|----------------|
| IN/MM           | DATE           |
| DRAWN BY        | DATE           |
| JLONG           | 1989/03/27     |
| CHECKED BY      | DATE           |
| BOWEN           | 1989/03/27     |
| APPROVED BY     | DATE           |
| DJB             | 1989/03/27     |
| MATERIAL NO.    | DOCUMENT NO.   |
| SEE TABLE       | SDA-79059-1*** |

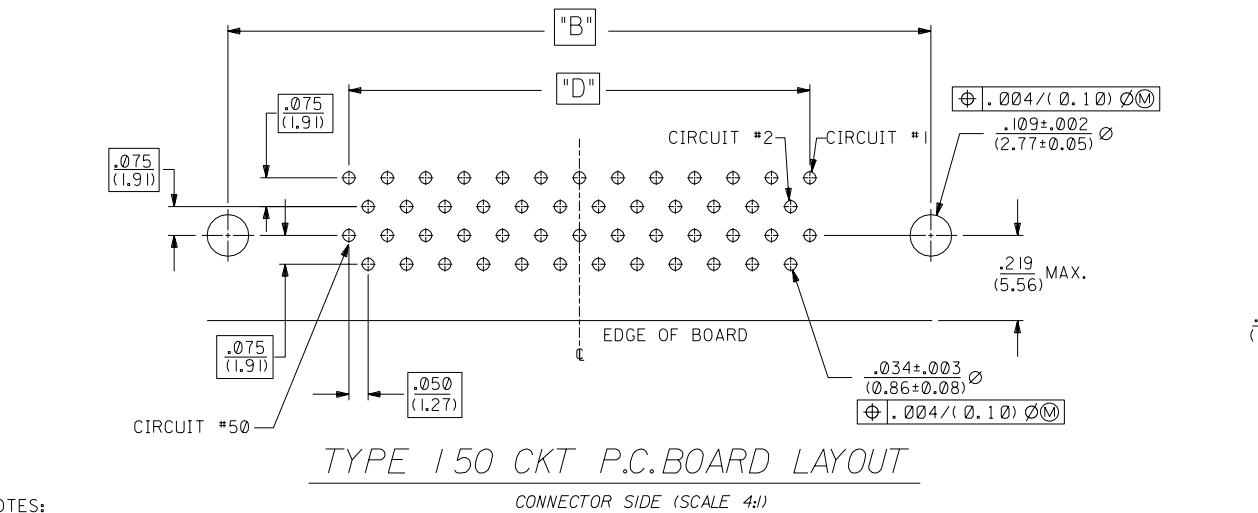
|   |                   |                        |
|---|-------------------|------------------------|
| SCALE 4:1                               | DESIGN UNITS INCH | THIRD ANGLE PROJECTION |
| SALES ASSEMBLY SCSI SHIELDED RECEPTACLE |                   |                        |
| MOLEX INCORPORATED                      |                   |                        |
| SHEET NO. 1 OF 4                        |                   |                        |

|     |     |
|-----|-----|
| 4   | 0   |
| 3   | 0   |
| 2   | N   |
| 1   | 0   |
| SHT | REV |

12 11 10 9 8 7 6 5 4 3 2 1



TYPE 1168 CKT P.C. BOARD LAYOUT  
CONNECTOR SIDE (SCALE 4:1)

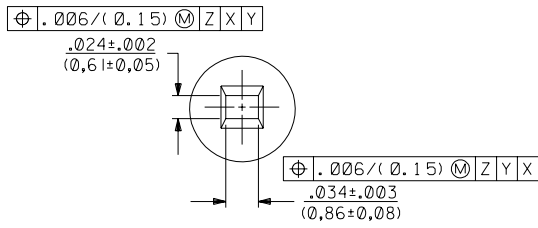


TYPE 150 CKT P.C. BOARD LAYOUT  
CONNECTOR SIDE (SCALE 4:1)

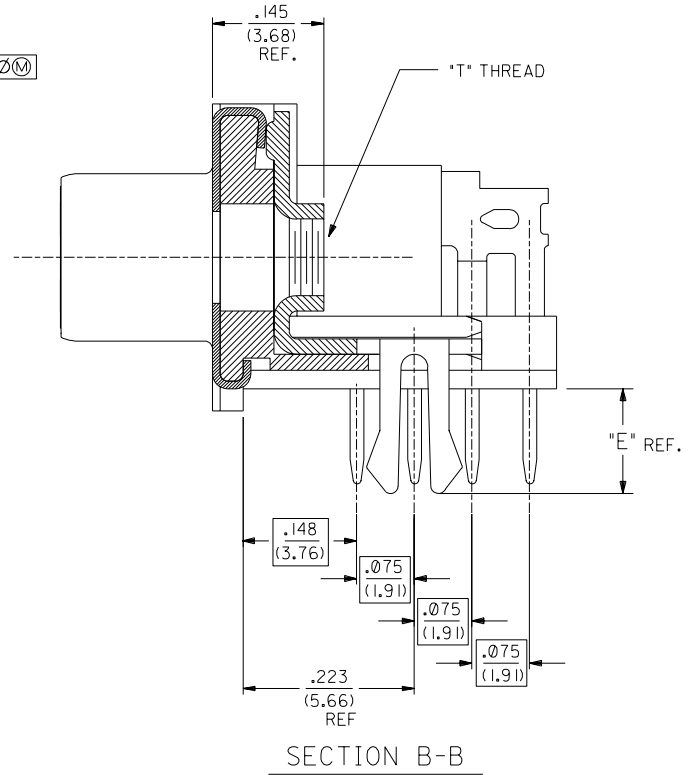
NOTES:

- REFER TO PS-79058 PRODUCT SPEC. FOR ELECTRICAL, MECHANICAL AND ENVIRONMENTAL SPECIFICATIONS.
- MATERIAL:  
RECEPTACLE HOUSING: GLASS FILLED LCP (LIQUID CRYSTAL POLYMER); COLOR-BLACK; UL 94V-0  
CONTACTS: PHOSPHOR BRONZE  
SHIELD: STEEL WITH BRIGHT TIN OVER NICKEL PLATING OVER COPPER FLASH.  
GROUNDING CLIP: BRASS WITH TIN OVER NICKEL PLATE
- PACKAGING:  
PARTS PACKAGED IN TUBES PER PK-70873-0207
- PLATING:  
SELECTIVE GOLD: THICKNESS= 30 MICROINCHES/(0.76 MICROMETERS) MINIMUM.  
SELECTIVE TIN: THICKNESS= 75 MICROINCHES/(1.90 MICROMETERS) MINIMUM.  
NICKEL UNDERPLATE OVERALL.

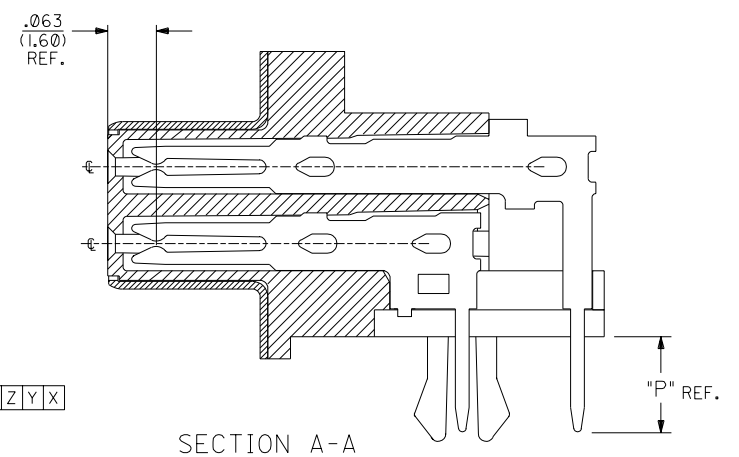
NOTE FOR LEAD FREE CONVERSION:  
THE PRIMARY SHIPPING CARTON WILL BE LABELED "COMPLIANT TO RoHS DIRECTIVE 2002/95/EC AND ELV ANNEX II OF DIRECTIVE 2000/53/EC". CARTONS WITHOUT THIS LABEL MAY CONTAIN PRODUCT WITH LEAD.



PIN WINDOW DETAIL  
SCALE 10:1



SECTION B-B



SECTION A-A  
SEE NOTE 2 (SHEET 1)

|  |  |   |  |
|--|--|---|--|
| MFG. SH. REV.  |  | REVISE ONLY ON CAD SYSTEM                                     |  |
| TITLE  |  | SCSI SHIELDED RECEPTACLE ASSEMBLY                             |  |
| DRAWN BY: J. J. [Signature]  |  | CHECKED BY: BOWEN   |  |
| APPROVED BY: DJB   |  | SCALE: 8:1  |  |
| DIMENSIONS SHOWN (METRIC) INCH UNLESS OTHERWISE SPECIFIED TOLERANCES: ANGULAR ± 1/2° |  | 3 PLACE ± .005 ---  |  |
|  |  | 2 PLACE ± --- ± 0.15  |  |
|  |  | 1 PLACE --- ± ---   |  |
| DRAWING WHERE APPLICABLE MUST REMAIN WITHIN DIMENSIONS                               |  | PART NO. MOLEX INCORPORATED SHEET NO. DATE                    |  |
|  |  | SDA-79059-1***  |  |
| FILE NAME: S79059A2.DGN  |  | MOLEX INC. AND SHOULD NOT BE USED WITHOUT WRITTEN PERMISSION. |  |
| L.T.R. REVISIONS   |  | L.T.R. REVISIONS  |  |

79059

DC

ASSEMBLIES WITH .078 DIAMETER END HOLES IN HOUSING AND #2-56 GND CLIPS

| J | EDP/ITEM NUMBER | CKT. SIZE | HOUSING HOLE DIA. | DIM. T GND. CLIP THREAD | DIM. A |       | DIM. B |       | DIM. C |       | DIM. D |       | DIM. E |      | DIM. H |       | DIM. P |      | RECMD PCB |      |
|---|-----------------|-----------|-------------------|-------------------------|--------|-------|--------|-------|--------|-------|--------|-------|--------|------|--------|-------|--------|------|-----------|------|
|   |                 |           |                   |                         | INCH   | MM    | INCH   | MM    | INCH   | MM    | INCH   | MM    | INCH   | MM   | INCH   | MM    | INCH   | MM   | INCH      | MM   |
| X |                 | 50        | .078              | 2-56                    | 2.065  | 52.54 | 1.830  | 46.48 | 1.366  | 34.69 | 1.200  | 30.48 | .105   | 2.67 | .400   | 10.16 | .125   | 3.18 | .062      | 1.57 |
| X |                 | 68        | .078              | 2-56                    | 2.515  | 63.88 | 2.280  | 57.91 | 1.816  | 46.13 | 1.650  | 41.91 | .105   | 2.67 | .400   | 10.16 | .125   | 3.18 | .062      | 1.57 |
| X |                 | 50        | .078              | 2-56                    | 2.065  | 52.54 | 1.830  | 46.48 | 1.366  | 34.69 | 1.200  | 30.48 | .136   | 3.45 | .400   | 10.16 | .125   | 3.18 | .093      | 2.36 |
| X |                 | 68        | .078              | 2-56                    | 2.515  | 63.88 | 2.280  | 57.91 | 1.816  | 46.13 | 1.650  | 41.91 | .136   | 3.45 | .400   | 10.16 | .125   | 3.18 | .093      | 2.36 |
| X |                 | 50        | .078              | 2-56                    | 2.065  | 52.54 | 1.830  | 46.48 | 1.366  | 34.69 | 1.200  | 30.48 | .168   | 4.27 | .400   | 10.16 | .165   | 4.19 | .125      | 3.18 |
| X |                 | 68        | .078              | 2-56                    | 2.515  | 63.88 | 2.280  | 57.91 | 1.816  | 46.13 | 1.650  | 41.91 | .168   | 4.27 | .400   | 10.16 | .165   | 4.19 | .125      | 3.18 |

X - NOT TOOLED

ASSEMBLIES WITH .105 DIAMETER END HOLES IN HOUSING AND #4-40 GND CLIPS

|   |             |    |      |      |       |       |       |       |       |       |       |       |      |      |      |       |      |      |      |      |
|---|-------------|----|------|------|-------|-------|-------|-------|-------|-------|-------|-------|------|------|------|-------|------|------|------|------|
|   | 015-87-6040 | 50 | .105 | 4-40 | 2.065 | 52.54 | 1.830 | 46.48 | 1.366 | 34.69 | 1.200 | 30.48 | .105 | 2.67 | .400 | 10.16 | .125 | 3.18 | .062 | 1.57 |
|   | 015-87-6200 | 68 | .105 | 4-40 | 2.515 | 63.88 | 2.280 | 57.91 | 1.816 | 46.13 | 1.650 | 41.91 | .105 | 2.67 | .400 | 10.16 | .125 | 3.18 | .062 | 1.57 |
|   | 015-87-6041 | 50 | .105 | 4-40 | 2.065 | 52.54 | 1.830 | 46.48 | 1.366 | 34.69 | 1.200 | 30.48 | .136 | 3.45 | .400 | 10.16 | .125 | 3.18 | .093 | 2.36 |
|   | 015-87-6201 | 68 | .105 | 4-40 | 2.515 | 63.88 | 2.280 | 57.91 | 1.816 | 46.13 | 1.650 | 41.91 | .136 | 3.45 | .400 | 10.16 | .125 | 3.18 | .093 | 2.36 |
| X |             | 50 | .105 | 4-40 | 2.065 | 52.54 | 1.830 | 46.48 | 1.366 | 34.69 | 1.200 | 30.48 | .168 | 4.27 | .400 | 10.16 | .165 | 4.19 | .125 | 3.18 |
| X |             | 68 | .105 | 4-40 | 2.515 | 63.88 | 2.280 | 57.91 | 1.816 | 46.13 | 1.650 | 41.91 | .168 | 4.27 | .400 | 10.16 | .165 | 4.19 | .125 | 3.18 |

X - NOT TOOLED

NOTE: ASSEMBLIES LISTED ON THIS SHEET HAVE A SMALLER HOLE DIAMETER FOR INSERTION OF SCREWLOCKS USING A POWER DRIVER.

|   |                               |                                       |                       |                          |                     |                                |                           |                        |  |  |  |
|---|-------------------------------|---------------------------------------|-----------------------|--------------------------|---------------------|--------------------------------|---------------------------|------------------------|--|--|--|
| REMOVE OBSOLETE #S<br>FCC NO. UICP2006-2901<br>DRAWN BY: BARRA 2006/06/12<br>CHK'D: BARKER 2006/06/12<br>APPR: SMILLER 2006/06/14<br>REV: | QUALITY SYMBOLS<br>= 0<br>= 0 | GENERAL TOLERANCES (UNLESS SPECIFIED) |                       | DIMENSION STYLE<br>IN/MM |                     | SCALE<br>---                   | DESIGN UNITS<br>INCH      | THIRD ANGLE PROJECTION |  |  |  |
|   |                               | 4 PLACES ± --- ± ---                  | 3 PLACES ± --- ± .005 | 2 PLACES ± 0.13 ± ---    | 1 PLACE ± --- ± --- | ANGULAR ±1/2°                  | DRAWN BY<br>JLONG         | DATE<br>1997/09/29     | TITLE<br>SCSI SHIELDED RECEPTACLE ASSEMBLY |  |  |
|   |                               |                                       |                       |                          |                     |                                | CHECKED BY<br>JLONG       | DATE<br>1997/09/29     | APPROVED BY<br>DJB                         |  |  |
|   |                               |                                       |                       |                          |                     |                                | MATERIAL NO.<br>SEE TABLE | DATE<br>1997/09/29     | MOLEX INCORPORATED                         |  |  |
| DRAFT WHERE APPLICABLE MUST REMAIN WITHIN DIMENSIONS  |                               |                                       |                       |                          | SIZE<br>C           | DOCUMENT NO.<br>SDA-79059-1*** |                           |                        | SHEET NO.<br>3 OF 4                        |  |  |