



Chipsmall Limited consists of a professional team with an average of over 10 year of expertise in the distribution of electronic components. Based in Hongkong, we have already established firm and mutual-benefit business relationships with customers from,Europe,America and south Asia,supplying obsolete and hard-to-find components to meet their specific needs.

With the principle of “Quality Parts,Customers Priority,Honest Operation,and Considerate Service”,our business mainly focus on the distribution of electronic components. Line cards we deal with include Microchip,ALPS,ROHM,Xilinx,Pulse,ON,Everlight and Freescale. Main products comprise IC,Modules,Potentiometer,IC Socket,Relay,Connector.Our parts cover such applications as commercial,industrial, and automotives areas.

We are looking forward to setting up business relationship with you and hope to provide you with the best service and solution. Let us make a better world for our industry!



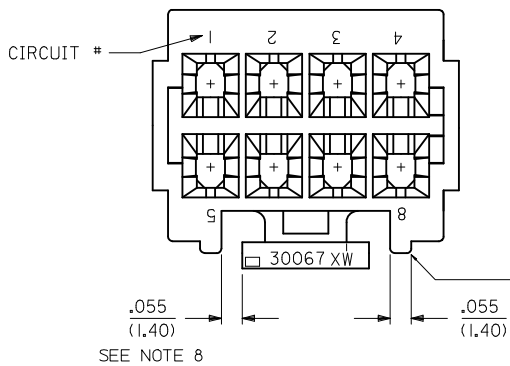
Contact us

Tel: +86-755-8981 8866 Fax: +86-755-8427 6832

Email & Skype: info@chipsmall.com Web: www.chipsmall.com

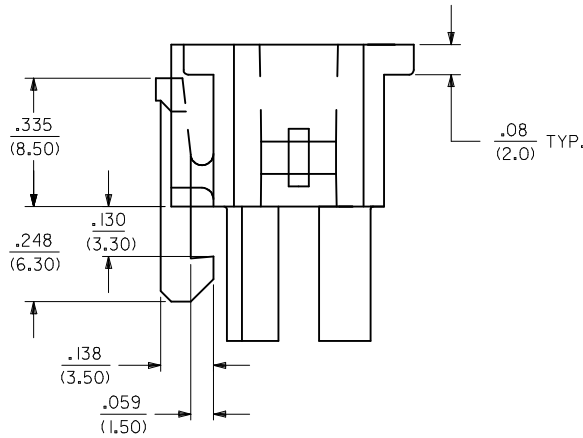
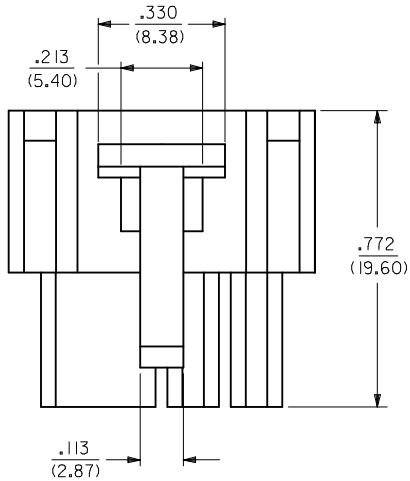
Address: A1208, Overseas Decoration Building, #122 Zhenhua RD., Futian, Shenzhen, China



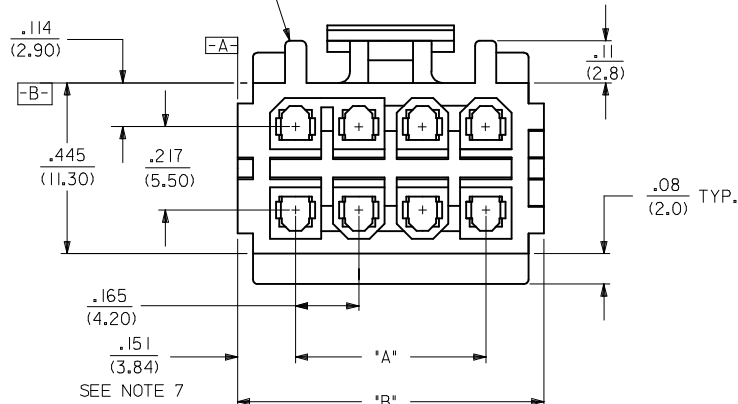


PROTECTIVE SIDES AVAILABLE ON ALL CIRCUITS EXCEPT TWO AND FOUR CIRCUITS.

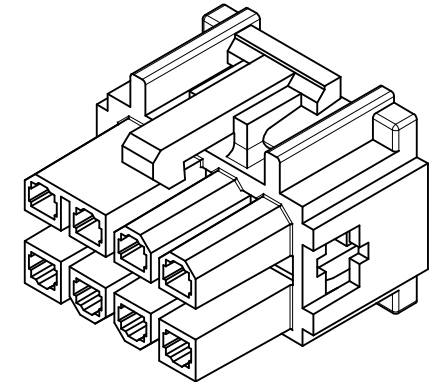
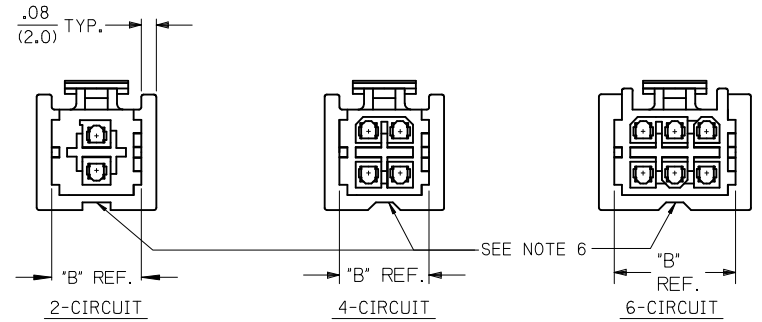
SEE NOTE 8



PROTECTIVE SIDES AVAILABLE ON ALL CIRCUITS EXCEPT TWO AND FOUR CIRCUITS.



SEE NOTE 7



NOTES:

- MATERIAL: UNFILLED POLYESTER. U.L. 94V-0. HOUSING COLOR: SEE CHART
- FINISH: N/A
- PRODUCT SPECIFICATION: PS-5556-003
- PACKAGING SPECIFICATION: PK-30067-001.
- HOUSING TO BE USED WITH TERMINAL #5556. AND T.P.A. LOCK #30072-*. RECEPTACLE HOUSING TO MATE WITH PLUG HOUSING #30068, ST. HEADER #30069, AND RT. ANGLE HEADERS #30070 & #44483. HOUSING ACCEPTS CONNECTOR POSITIONING ASSURANCE (C.P.A.) LOCK #30071.
- RELIEF NOTCH IS OPTIONAL AND MAY OR MAY NOT APPEAR ON 2, 4, 6, 10 & 12 CIRCUIT HOUSINGS ONLY.
- FOR 2 CKT HOUSING, DIMENSION IS .231/5.88
- FOR 2 & 4 CKT HOUSINGS, DIMENSION IS .070/1.78
- THIS PART CONFORMS TO CLASS B REQUIREMENTS OF COSMETIC SPEC PS-45499-002.
- TEXT ON PART IS FOR REFERENCE ONLY. TEXT AND TEXT LOCATION MAY VARY DEPENDING ON PART NUMBER AND/OR TOOL.

REMOVE NAT P/N'S EC NO: UCP2017-0405 DRWING:SLAFER 2016/09/15 CHKD:JBELL 2016/09/15 APPR:FSMITH 2016/09/21	QUALITY SYMBOLS ▽=0 ▽=0 ▽=0	GENERAL TOLERANCES (UNLESS SPECIFIED)		DIMENSION STYLE		SCALE	DESIGN UNITS	THIRD ANGLE PROJECTION			
				IN/MM		4:1	METRIC				
				mm	INCH	DRAWN BY	DATE	TITLE			
				4 PLACES ± .010	± .010	RJF	09/23/91	2-16 CKT. RECPT. HSG. MINI-FIT T.P.A. SERIES			
		3 PLACES ± .010	± .010	CHECKED BY	DATE	SD-30067-*					
		2 PLACES ± 0.25	± .014	GEP	09/23/91						
		1 PLACE ± 0.36	± .014	APPROVED BY	DATE	molex					
		0 PLACE ±	±	FSMITH	2010/10/25						
		ANGULAR ±1/2°		MATERIAL NO.		DOCUMENT NO.		SHEET NO.			
		DRAFT WHERE APPLICABLE MUST REMAIN WITHIN DIMENSIONS		SEE CHART		SD-30067-*		1 OF 2			
				SIZE C		THIS DRAWING CONTAINS INFORMATION THAT IS PROPRIETARY TO MOLEX INCORPORATED AND SHOULD NOT BE USED WITHOUT WRITTEN PERMISSION					

	BLACK		NATURAL			
CKT. SIZE	ENG. NO.	EDP. NO.	ENG. NO.	EDP. NO.	DIM. "A"	DIM. "B"
02	30067-02A2	I5-97-502I			—	.467 (11.86)
04	30067-04A2	I5-97-504I	30067-0412	30067-0412	.165 (4.20)	.467 (11.86)
06	30067-06A2	I5-97-506I	30067-0612	30067-0612	.331 (8.40)	.633 (16.08)
08	30067-08A2	I5-97-508I			.496 (12.60)	.798 (20.27)
10	30067-10A2	I5-97-510I			.661 (16.80)	.963 (24.46)
12	30067-12A2	I5-97-512I			.827 (21.00)	1.129 (28.68)
14	30067-14A2	NOT TOOLED			.992 (25.20)	1.294 (32.87)
16	30067-16A2	I5-97-516I			1.157 (29.40)	1.459 (37.06)

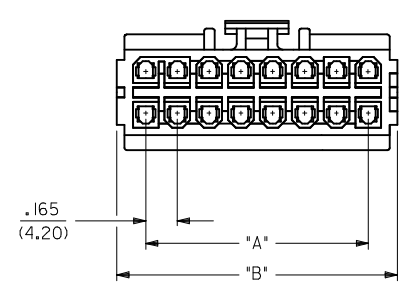
LEGEND:

30067 - ** * 2

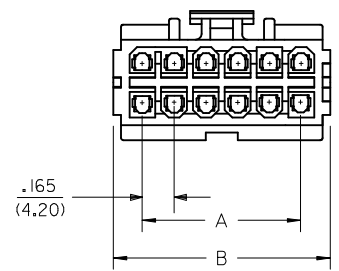
CIRCUIT SIZE ——— (02-16)

HOUSING COLOR ———

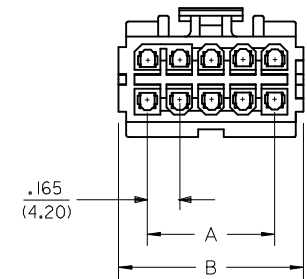
A = BLACK
1 = NATURAL



16 CIRCUITS



12 CKT.



10 CKT.

SEE SHEET 1 EC NO: UCP2017-0405 DRWNC:LAFTER 2016/09/15 CHKD:JBELL 2016/09/15 APPR:FSMITH 2016/09/21 H4	QUALITY SYMBOLS 	GENERAL TOLERANCES (UNLESS SPECIFIED)		DIMENSION STYLE IN/MM		SCALE 2:1	DESIGN UNITS METRIC	THIRD ANGLE PROJECTION		
			mm	INCH	DRAWN BY	DATE	2-16 CKT. RECP. HSG. MINI-FIT T.P.A. SERIES			
					RJF	09/23/91				
			4 PLACES ± .005	± .005	CHECKED BY	DATE				
		3 PLACES ± .005	± .010	GEP	09/23/91					
		2 PLACES ± 0.25	± .014	APPROVED BY	DATE	SD-30067-*				
		1 PLACE ± 0.36	± .014	FSMITH	2010/10/25					
		0 PLACE ±	±	MATERIAL NO.		DOCUMENT NO.		SHEET NO.		
		ANGULAR ±1/2°		SEE CHART		SD-30067-*		2 OF 2		
DRAFT WHERE APPLICABLE MUST REMAIN WITHIN DIMENSIONS		SIZE		THIS DRAWING CONTAINS INFORMATION THAT IS PROPRIETARY TO MOLEX INCORPORATED AND SHOULD NOT BE USED WITHOUT WRITTEN PERMISSION						