



Chipsmall Limited consists of a professional team with an average of over 10 year of expertise in the distribution of electronic components. Based in Hongkong, we have already established firm and mutual-benefit business relationships with customers from,Europe,America and south Asia,supplying obsolete and hard-to-find components to meet their specific needs.

With the principle of “Quality Parts,Customers Priority,Honest Operation,and Considerate Service”,our business mainly focus on the distribution of electronic components. Line cards we deal with include Microchip,ALPS,ROHM,Xilinx,Pulse,ON,Everlight and Freescale. Main products comprise IC,Modules,Potentiometer,IC Socket,Relay,Connector.Our parts cover such applications as commercial,industrial, and automotives areas.

We are looking forward to setting up business relationship with you and hope to provide you with the best service and solution. Let us make a better world for our industry!



Contact us

Tel: +86-755-8981 8866 Fax: +86-755-8427 6832

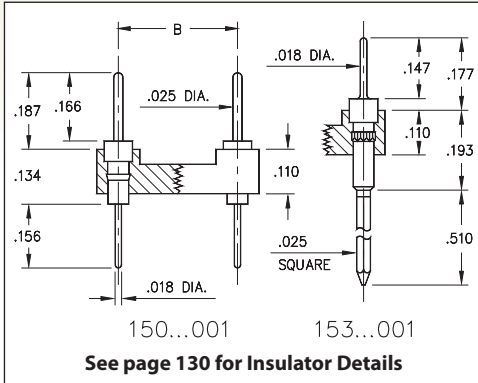
Email & Skype: info@chipsmall.com Web: www.chipsmall.com

Address: A1208, Overseas Decoration Building, #122 Zhenhua RD., Futian, Shenzhen, China

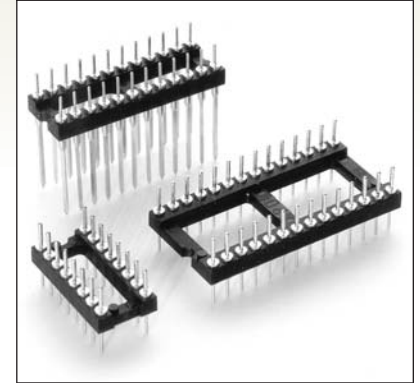


DUAL-IN-LINE HEADERS

SERIES 150, 153 • SOLDER TAIL AND WRAPOST • OPEN FRAME



- Series 150 DIL Headers are equipped with .025" dia. pins MM #0290. See page 215 for details
- Series 153 DIL Headers have 3-level wraposts MM #5301. See page 227 for details
- Both series have .018" dia. solder tails which are pluggable into standard contacts
- Insulators are high temperature thermoplastic, suitable for all soldering operations
- For Electrical, Mechanical and Environmental Data, see page 264 for details



Total number of pins				Quantity per tube	ORDERING INFORMATION		<div style="border: 1px solid black; padding: 5px; text-align: center;"> RoHS-2 2011/65/EU </div> <div style="border: 1px solid black; border-radius: 50%; padding: 10px; text-align: center; margin-top: 10px;"> XX=Plating Code See Below </div>			
	A	B	C		Solder Tail	3 Level Wrapost				
10	0.5	0.2	0.3	40	150-XX-210-00-001000	153-XX-210-00-001000				
4	0.2	0.3	0.4	102	150-XX-304-00-001000	153-XX-304-00-001000				
6	0.3	0.3	0.4	67	150-XX-306-00-001000	153-XX-306-00-001000				
8	0.4	0.3	0.4	50	150-XX-308-00-001000	153-XX-308-00-001000				
10	0.5	0.3	0.4	40	150-XX-310-00-001000	153-XX-310-00-001000				
14	0.7	0.3	0.4	29	150-XX-314-00-001000	153-XX-314-00-001000				
16	0.8	0.3	0.4	25	150-XX-316-00-001000	153-XX-316-00-001000				
18	0.9	0.3	0.4	22	150-XX-318-00-001000	153-XX-318-00-001000				
20	1.0	0.3	0.4	20	150-XX-320-00-001000	153-XX-320-00-001000				
22	1.1	0.3	0.4	18	150-XX-322-00-001000	153-XX-322-00-001000				
24	1.2	0.3	0.4	16	150-XX-324-00-001000	153-XX-324-00-001000				
28	1.4	0.3	0.4	14	150-XX-328-00-001000	153-XX-328-00-001000				
20	1.0	0.4	0.5	20	150-XX-420-00-001000	153-XX-420-00-001000				
22	1.1	0.4	0.5	18	150-XX-422-00-001000	153-XX-422-00-001000				
24	1.2	0.4	0.5	16	150-XX-424-00-001000	153-XX-424-00-001000				
28	1.4	0.4	0.5	14	150-XX-428-00-001000	153-XX-428-00-001000				
32	1.6	0.4	0.5	12	150-XX-432-00-001000	153-XX-432-00-001000				
24	1.2	0.6	0.7	16	150-XX-624-00-001000	153-XX-624-00-001000				
28	1.4	0.6	0.7	14	150-XX-628-00-001000	153-XX-628-00-001000				
32	1.6	0.6	0.7	12	150-XX-632-00-001000	153-XX-632-00-001000				
36	1.8	0.6	0.7	11	150-XX-636-00-001000	153-XX-636-00-001000				
40	2.0	0.6	0.7	10	150-XX-640-00-001000	153-XX-640-00-001000				
42	2.1	0.6	0.7	9	150-XX-642-00-001000	153-XX-642-00-001000				
48	2.4	0.6	0.7	8	150-XX-648-00-001000	153-XX-648-00-001000				
50	2.5	0.6	0.7	8	150-XX-650-00-001000	153-XX-650-00-001000				
52	2.6	0.6	0.7	7	150-XX-652-00-001000	153-XX-652-00-001000				
50	2.5	0.9	1.0	8	150-XX-950-00-001000	153-XX-950-00-001000				
52	2.6	0.9	1.0	7	150-XX-952-00-001000	153-XX-952-00-001000				
64	3.2	0.9	1.0	6	150-XX-964-00-001000	153-XX-964-00-001000				
					SPECIFY PLATING CODE XX =		10 ◆	90	40 ◆	
					Pin Plating	10 μ" Au	200 μ" Sn/Pb	200 μ" Sn		