



Chipsmall Limited consists of a professional team with an average of over 10 year of expertise in the distribution of electronic components. Based in Hongkong, we have already established firm and mutual-benefit business relationships with customers from,Europe,America and south Asia,supplying obsolete and hard-to-find components to meet their specific needs.

With the principle of “Quality Parts,Customers Priority,Honest Operation,and Considerate Service”,our business mainly focus on the distribution of electronic components. Line cards we deal with include Microchip,ALPS,ROHM,Xilinx,Pulse,ON,Everlight and Freescale. Main products comprise IC,Modules,Potentiometer,IC Socket,Relay,Connector.Our parts cover such applications as commercial,industrial, and automotives areas.

We are looking forward to setting up business relationship with you and hope to provide you with the best service and solution. Let us make a better world for our industry!



Contact us

Tel: +86-755-8981 8866 Fax: +86-755-8427 6832

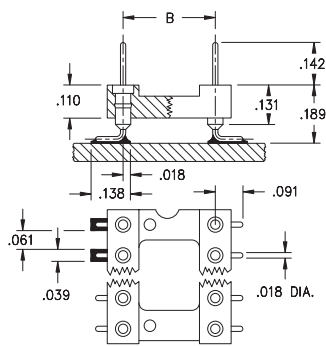
Email & Skype: info@chipsmall.com Web: www.chipsmall.com

Address: A1208, Overseas Decoration Building, #122 Zhenhua RD., Futian, Shenzhen, China



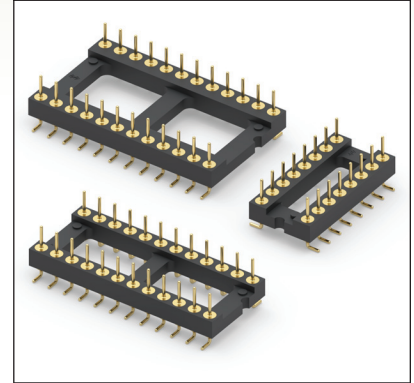
DUAL-IN-LINE HEADERS


SERIES 150 • SURFACE MOUNT, GULL WING • OPEN FRAME



See page 130 for Insulator Details

- Surface mount Gull Wing DIP headers for adapters and board stacking on .100" lead spacing
- Gull wing terminals provide maximum strength and permit easy visual inspection of solder joints
- Series 150 uses MM #3404 pins. See page 212 for details
- Insulators are high temperature thermoplastic, suitable for all soldering operations
- For Electrical, Mechanical and Environmental Data, see page 264 for details



| Total number of pins | Pin Spacing Dimensions (mm) | | | Quantity per tube | ORDERING INFORMATION | | | | |
|--|-----------------------------|-----|-----|-------------------|------------------------------|---|----------|--|--|
| | A | B | C | | | | | | |
| 10 | 0.5 | 0.2 | 0.3 | 40 | 150-10-210-00-106000 | | | | |
| 4 | 0.2 | 0.3 | 0.4 | 102 | 150-10-304-00-106000 | | | | |
| 6 | 0.3 | 0.3 | 0.4 | 67 | 150-10-306-00-106000 | | | | |
| 8 | 0.4 | 0.3 | 0.4 | 50 | 150-10-308-00-106000 | | | | |
| 10 | 0.5 | 0.3 | 0.4 | 40 | 150-10-310-00-106000 | | | | |
| 14 | 0.7 | 0.3 | 0.4 | 29 | 150-10-314-00-106000 | | | | |
| 16 | 0.8 | 0.3 | 0.4 | 25 | 150-10-316-00-106000 | | | | |
| 18 | 0.9 | 0.3 | 0.4 | 22 | 150-10-318-00-106000 | | | | |
| 20 | 1.0 | 0.3 | 0.4 | 20 | 150-10-320-00-106000 | | | | |
| 22 | 1.1 | 0.3 | 0.4 | 18 | 150-10-322-00-106000 | | | | |
| 24 | 1.2 | 0.3 | 0.4 | 16 | 150-10-324-00-106000 | | | | |
| 28 | 1.4 | 0.3 | 0.4 | 14 | 150-10-328-00-106000 | | | | |
| 20 | 1.0 | 0.4 | 0.5 | 20 | 150-10-420-00-106000 | | | | |
| 22 | 1.1 | 0.4 | 0.5 | 18 | 150-10-422-00-106000 | | | | |
| 24 | 1.2 | 0.4 | 0.5 | 16 | 150-10-424-00-106000 | | | | |
| 28 | 1.4 | 0.4 | 0.5 | 14 | 150-10-428-00-106000 | | | | |
| 32 | 1.6 | 0.4 | 0.5 | 12 | 150-10-432-00-106000 | | | | |
| 24 | 1.2 | 0.6 | 0.7 | 16 | 150-10-624-00-106000 | | | | |
| 28 | 1.4 | 0.6 | 0.7 | 14 | 150-10-628-00-106000 | | | | |
| 32 | 1.6 | 0.6 | 0.7 | 12 | 150-10-632-00-106000 | | | | |
| 36 | 1.8 | 0.6 | 0.7 | 11 | 150-10-636-00-106000 | | | | |
| 40 | 2.0 | 0.6 | 0.7 | 10 | 150-10-640-00-106000 | | | | |
| 42 | 2.1 | 0.6 | 0.7 | 9 | 150-10-642-00-106000 | | | | |
| 48 | 2.4 | 0.6 | 0.7 | 8 | 150-10-648-00-106000 | | | | |
| 50 | 2.5 | 0.6 | 0.7 | 8 | 150-10-650-00-106000 | | | | |
| 52 | 2.6 | 0.6 | 0.7 | 7 | 150-10-652-00-106000 | | | | |
| 50 | 2.5 | 0.9 | 1.0 | 8 | XX=Plating Code See Below | 150-10-950-00-106000 | | | |
| 52 | 2.6 | 0.9 | 1.0 | 7 | | 150-10-952-00-106000 | | | |
| 64 | 3.2 | 0.9 | 1.0 | 6 | | 150-10-964-00-106000 | | | |
| See page 264 for coplanarity information | | | | | | SPECIFY PLATING CODE XX = | | | |
| | | | | | Pin Plating |  | 10 μ" Au | | |

