



Chipsmall Limited consists of a professional team with an average of over 10 year of expertise in the distribution of electronic components. Based in Hongkong, we have already established firm and mutual-benefit business relationships with customers from,Europe,America and south Asia,supplying obsolete and hard-to-find components to meet their specific needs.

With the principle of “Quality Parts,Customers Priority,Honest Operation,and Considerate Service”,our business mainly focus on the distribution of electronic components. Line cards we deal with include Microchip,ALPS,ROHM,Xilinx,Pulse,ON,Everlight and Freescale. Main products comprise IC,Modules,Potentiometer,IC Socket,Relay,Connector.Our parts cover such applications as commercial,industrial, and automotives areas.

We are looking forward to setting up business relationship with you and hope to provide you with the best service and solution. Let us make a better world for our industry!



Contact us

Tel: +86-755-8981 8866 Fax: +86-755-8427 6832

Email & Skype: info@chipsmall.com Web: www.chipsmall.com

Address: A1208, Overseas Decoration Building, #122 Zhenhua RD., Futian, Shenzhen, China



eCAM-i.MX

The embedded camera platform



BLUETECHNIX
Embedding Ideas

The upcoming eCAM camera platform stands for state of the art processor technology combined with outstanding image processing software to build a modular, intelligent embedded camera system integrated into a smart housing with high quality optics. This platform grows with the market demands due to its System-on-Module (SOM) based hardware design. The housing stays the same whereas the processing hardware can be exchanged.

The first hardware release is based on Bluetechnix' latest i.MX53 SOM called CM-i.MX53. This powerful ARM® Cortex™-A8 (1GHz) based module with a large number of peripheral interfaces and a huge memory capacity of 1GByte DDR2-SDRAM and 2GByte NAND flash, are the perfect basis for your high end image processing applications.

The eCAM comes with a complete software application framework that can be tailored to your requirements. In addition to this the Advanced Development and Analysis Framework (ADAF) developed by NISYS can be used to build stand alone object recognition systems e.g. traffic sign recognition, license plate detection etc.



Highlights

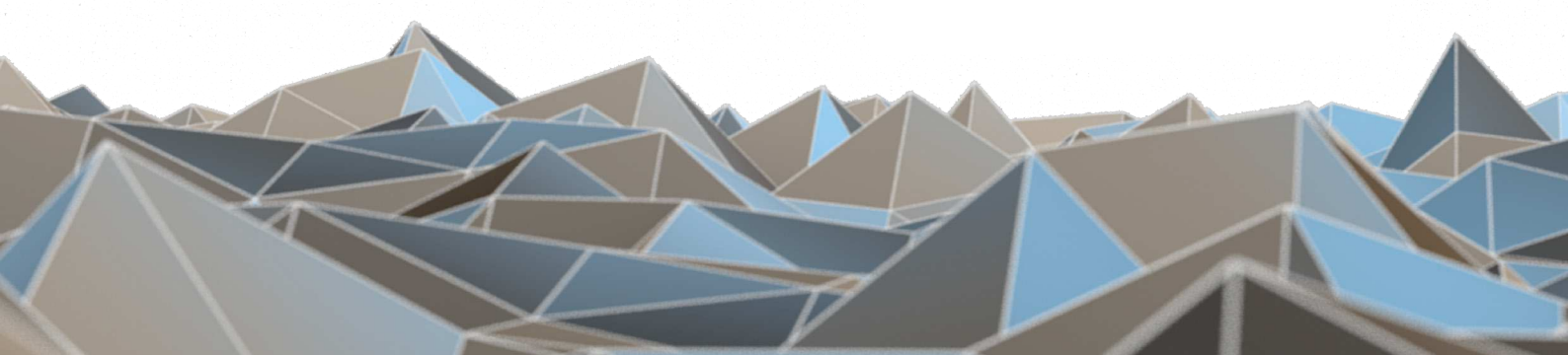
- » Powerful i.MX53 based hardware
- » High resolution camera
- » Plug & Play camera kit
- » Mountable smart housing
- » Stand alone intelligent camera
- » Free software and lots of demos available
- » Optional ADAF pre-installed on SD-card

Applications

- » Object Recognition Systems
- » Industrial Vision
- » Security & Surveillance
- » Advanced Driver Assistance Systems
- » Automation and Control



eCAM-i.MX connector view



eCAM-i.MX

The embedded camera platform



BLUETECHNIX
Embedding Ideas

Feature Overview

SoC	Freescale i.MX535 (ARM® Cortex™-A8)	
CLOCK	1GHz	
RAM	1GByte DDR2-SDRAM	
FLASH	4MByte NOR / 2GByte NAND	
IMAGER	Aptina MT9M131 - up to 15 fps @ 1280H x 1024V - 30 fps @ 640H x 480V	
INTERFACES	HDMI	1
	ETHERNET	1x10/100MBit Ethernet PHY
	USB 2.0	1 x OTG
	LENS MOUNT	M12 or CS mount lenses
POWER SUPPLY	12V _{DC}	
TEMPERATURE RANGE	Commercial 0 to +70 °C	
TRIPOD MOUNT	1 x 1/4"	
DIMENSIONS	143 x 55 mm (without lense)	

NISYS ADAF

Advanced Development and Analysis Framework

ADAF by NISYS consists of an operating system independent middleware and a GUI. The middleware provides the following functionalities:

- » Integration of arbitrary sensor devices (Camera, CAN, GPS...)
- » Data recording and replay featuring a microsecond timestamp resolution
- » Synchronization of different sensors during recording and replaying
- » Framework for development and integration of processing plugins
 - C / C++
 - Scripting language Lua
- » User defined input / output structures
- » Coupling of plugins via processing graph

Due to the strict separation of core and GUI functionalities, you are able to design the user interface matching your requirements.

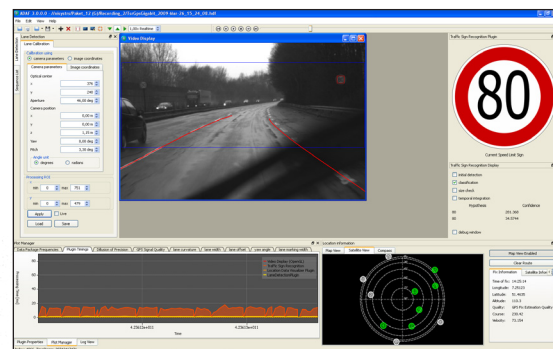
Further information on www.nisys.de

Software

- » Linux Board Support Package (v2.6.35)
- » NISYS ADAF for Linux

Further information on

www.bluetechnix.com/goto/ecam-i.mx



ADAF lane detection, traffic sign recognition

Ordering Information

Order No.	Info
150-1001-1	eCAM-i.MX based on i.MX53 and MT9M131 CS mount

BLUETECHNIX Mechatronische Systeme GmbH
Waidhausenstraße 3/19 | 1140 Wien, Austria
+43 (1) 9142091 x 0 | +43 (1) 9142091 x 99
www.bluetechnix.com | office@bluetechnix.com