



Chipsmall Limited consists of a professional team with an average of over 10 year of expertise in the distribution of electronic components. Based in Hongkong, we have already established firm and mutual-benefit business relationships with customers from,Europe,America and south Asia,supplying obsolete and hard-to-find components to meet their specific needs.

With the principle of “Quality Parts,Customers Priority,Honest Operation,and Considerate Service”,our business mainly focus on the distribution of electronic components. Line cards we deal with include Microchip,ALPS,ROHM,Xilinx,Pulse,ON,Everlight and Freescale. Main products comprise IC,Modules,Potentiometer,IC Socket,Relay,Connector.Our parts cover such applications as commercial,industrial, and automotives areas.

We are looking forward to setting up business relationship with you and hope to provide you with the best service and solution. Let us make a better world for our industry!



Contact us

Tel: +86-755-8981 8866 Fax: +86-755-8427 6832

Email & Skype: info@chipsmall.com Web: www.chipsmall.com

Address: A1208, Overseas Decoration Building, #122 Zhenhua RD., Futian, Shenzhen, China



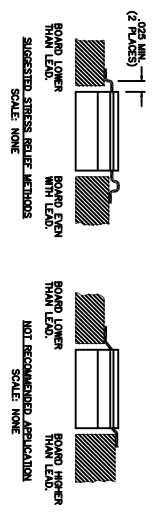
150-100RL

REVISIONS

REV	RCN	DESCRIPTION	DATE	APP
A	---	INITIAL RELEASE	11/89	TP
B	2976	UPDATED FLANGE DIMENSIONS	4/00	TJD
C	3608	UPDATE DRAWING & REVISE SPEC DATA	5/01	MS
D	4134	CHANGE FROM ELECTROLESS TO ELECTROLYTIC	3/02	TJD
E	80925	REFORMAT DWG NO.	4/11/05	JH

NOTES:

1. OPERATING TEMPERATURE: -55°C TO +150°C. (SEE CHART)
2. DESIGNED TO MEET OR EXCEED APPLICABLE PORTIONS OF MIL-E-5400 & MIL-R-55342.
3. LEAD LENGTH: .150 MIN.



SUGGESTED MOUNTING PROCEDURES:

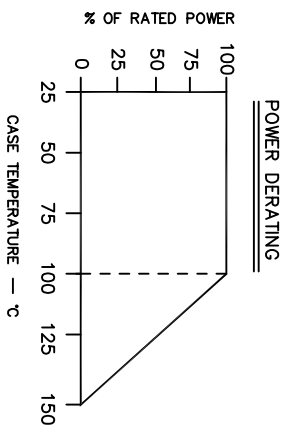
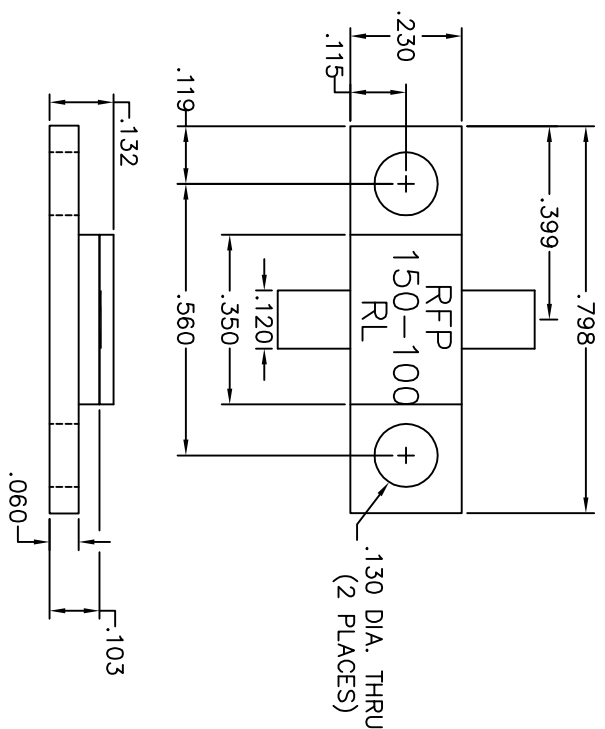
1. MAKE SURE THAT THE DEVICES ARE MOUNTED ON FLAT SURFACES (.001" UNDER THE DEVICE) TO OPTIMIZE THE HEAT TRANSFER.
2. DRILL & TAP THE HEATSINK FOR THE APPROPRIATE THREAD SIZE TO BE USED.
3. COAT HEATSINK WITH A MINIMUM AMOUNT OF HIGH QUALITY SILICONE GREASE (.001" MAX. THICKNESS).
4. POSITION DEVICE ON MOUNTING SURFACE & SECURE USING SOCKET HEAD SCREWS, FLAT & SPLIT WASHER, TORQUE SCREWS TO THE APPROPRIATE VALUE. MAKE SURE THAT THE DEVICE IS FLAT AGAINST THE HEATSINK (CARE SHOULD BE TAKEN TO AVOID UPWARD PRESSURE OF THE LEADS TOWARDS THE LD).
5. SOLDER LEADS IN PLACE USING 60/40 TYPE SOLDER WITH A CONTROLLED TEMPERATURE IRON (210°C).

** FOR MORE DETAILS CONTACT FACTORY **

GENERAL SPECIFICATIONS:

RESISTIVE ELEMENT: PROPRIETARY THICK FILM
 SUBSTRATE: BERYLLIUM OXIDE CERAMIC
 COVER: ALUMINA CERAMIC
 MOUNTING FLANGE: COPPER, ELECTROLYTIC NICKEL PER QQ-N-290
 LEAD(S): 99.99% PURE SILVER (.005" THK.)

PERFORMANCE SPECIFICATIONS:
 RESISTANCE VALUE: 100 OHMS, ±5%
 FREQUENCY RANGE: DC - 2.0 GHZ.
 INPUT POWER: 150 WATTS
 CAPACITANCE: 2.9 pF TYPICAL



THIS DRAWING CONTAINS PROPRIETARY INFORMATION ANY REPRODUCTION, DISCLOSURE OR USE OF THIS DRAWING IS EXPRESSLY PROHIBITED EXCEPT AS OTHERWISE AUTHORIZED IN WRITING.		DWN BY	TP	DATE	1/91
		CHEK BY	WK	DATE	4/4/00
		ENG.	TJD	DATE	4/00
		MFG.	NE	DATE	4/00
		UNLESS OTHERWISE SPECIFIED DIMENSIONS ARE IN INCHES. TOLERANCES ON DECIMALS .XXX±.010			

SUBSIDIARY OF ANAREN MICROWAVE			
RF POWER OUTLINE			
FULL FLANGE RESISTOR 150 WATT 100 OHM			
SIZE	CAGE CODE	DOC. NO.	REV.
B	OBXB2	150-100RL	304 E
SCALE	4:1	REF	SHEET 1 OF 1