



Chipsmall Limited consists of a professional team with an average of over 10 year of expertise in the distribution of electronic components. Based in Hongkong, we have already established firm and mutual-benefit business relationships with customers from,Europe,America and south Asia,supplying obsolete and hard-to-find components to meet their specific needs.

With the principle of “Quality Parts,Customers Priority,Honest Operation,and Considerate Service”,our business mainly focus on the distribution of electronic components. Line cards we deal with include Microchip,ALPS,ROHM,Xilinx,Pulse,ON,Everlight and Freescale. Main products comprise IC,Modules,Potentiometer,IC Socket,Relay,Connector.Our parts cover such applications as commercial,industrial, and automotives areas.

We are looking forward to setting up business relationship with you and hope to provide you with the best service and solution. Let us make a better world for our industry!



## Contact us

Tel: +86-755-8981 8866 Fax: +86-755-8427 6832

Email & Skype: info@chipsmall.com Web: www.chipsmall.com

Address: A1208, Overseas Decoration Building, #122 Zhenhua RD., Futian, Shenzhen, China



# Sentis<sup>ToF</sup> - M100

Time-of-Flight Smart Sensor



BLUETECHNIX  
Embedding Ideas

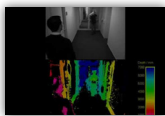
The Sentis<sup>ToF</sup> - M100 is a new 3D sensor, operating on the Time-of-Flight (ToF) principle. The M100 is equipped with a PMD PhotonICS® 19k-S3 Time-of-Flight 3D chip.

This smart 3D sensor delivers depth information and gray value image data for each pixel simultaneously. Therefore, it's possible to analyze scenes based on 3D data only or in combination with 2D grayscale data.

Using active IR illumination, the sensor is able to capture 3D and 2D information at a resolution of 160x120 pixels with up to 40\* frames per second independently of ambient light. With a range of 3m, a field of view of 90° and a size of only 50 x 55 x 36 mm, this Ethernet connected sensor can be used for next generation sensor systems in various application fields like robotics, gesture recognition, HMI or people counting.



Sentis<sup>ToF</sup> - M100

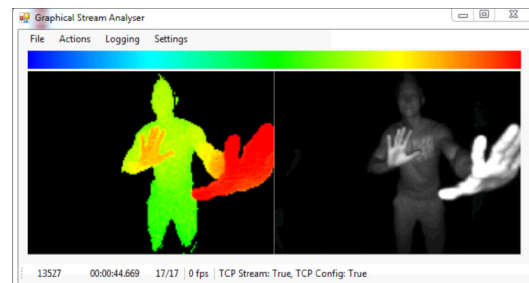


## Applications

- » People counting / tracking
- » 3D light barrier - safety area
- » Gesture Recognition
- » HMI for industrial robots
- » Range measurements
- » Building Automation

## Highlights

- » 3D depth sensor PMD ToF technology
- » Real-time capture of distance and grayscale information
- » 160 x 120 pixel
- » Up to 40 fps\*
- » 3 to 5 m application range\*
- » Ethernet
- » Active IR illumination 850nm
- » Field-of-View 90°



Sentis<sup>ToF</sup> - M100 distance and grayscale information

# Sentis<sup>ToF</sup> - M100

Time-of-Flight Smart Sensor



BLUETECHNIX  
Embedding Ideas

## Feature Overview

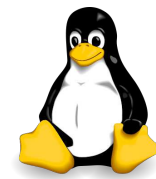
<b>3D TECHNOLOGY</b>	PMD ToF (19k-S3)
<b>PIXEL</b>	160 x 120
<b>DSP</b>	BF561 (2 x 500MHz)
<b>RAM</b>	32 MByte SD-RAM
<b>FLASH</b>	up to 64 MByte NOR
<b>FPS</b>	up to 40 <sup>*</sup>
<b>RANGE</b>	3 - 5 m <sup>*</sup>
<b>LED</b>	2 x 850 nm
<b>POWER SUPPLY</b>	24V <sub>DC</sub> @ 0.7A
<b>Ethernet</b>	10/100Mbit
<b>RS232</b>	1
<b>RS485</b>	1
<b>GPIO</b>	3
<b>TRIGGER INPUT</b>	1
<b>TEMPERATURE RANGE</b>	Industrial -40 to +85 °C
<b>SUPPORTED OS</b>	uClinux VDSP++ Project
<b>COOLING</b>	Passive
<b>DIMENSIONS</b>	B60 x H60 x T40mm W2.36" x H2.36" x D1.57"

<sup>\*</sup>FPS & Range depends on integration time, ambient temperature and software configuration

## Software

Sentis<sup>ToF</sup> - M100 software support

- » uClinux BSP with dual core support
- » VDSP++ multithreaded dual core project



## Customization

Sentis<sup>ToF</sup> - M100 is focused on modularity. Individual base boards with your required interfaces can easily be implemented.

Further information on  
[www.bluetech.com/goto/sentis](http://www.bluetech.com/goto/sentis)

Sensor can be ordered without base/interface board.

## Ordering Information

Order No.	Info
150-3001-1	Sentis <sup>ToF</sup> - M100 Time-of-Flight smart sensor

Based on



BLUETECHNIX GmbH  
Waichhausenstraße 3/19 | 1140 Wien, Austria  
P +43 (1) 9142091 x 0 | F +43 (1) 9142091 x 99  
[www.bluetech.com](http://www.bluetech.com) | [office@bluetech.com](mailto:office@bluetech.com)