



Chipsmall Limited consists of a professional team with an average of over 10 year of expertise in the distribution of electronic components. Based in Hongkong, we have already established firm and mutual-benefit business relationships with customers from,Europe,America and south Asia,supplying obsolete and hard-to-find components to meet their specific needs.

With the principle of “Quality Parts,Customers Priority,Honest Operation,and Considerate Service”,our business mainly focus on the distribution of electronic components. Line cards we deal with include Microchip,ALPS,ROHM,Xilinx,Pulse,ON,Everlight and Freescale. Main products comprise IC,Modules,Potentiometer,IC Socket,Relay,Connector.Our parts cover such applications as commercial,industrial, and automotives areas.

We are looking forward to setting up business relationship with you and hope to provide you with the best service and solution. Let us make a better world for our industry!



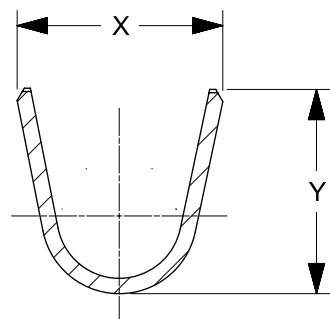
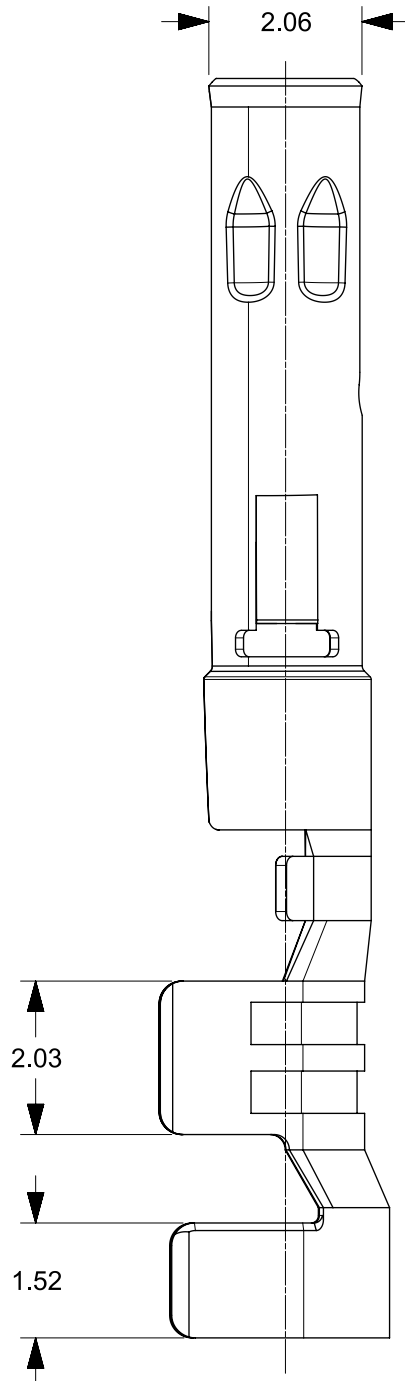
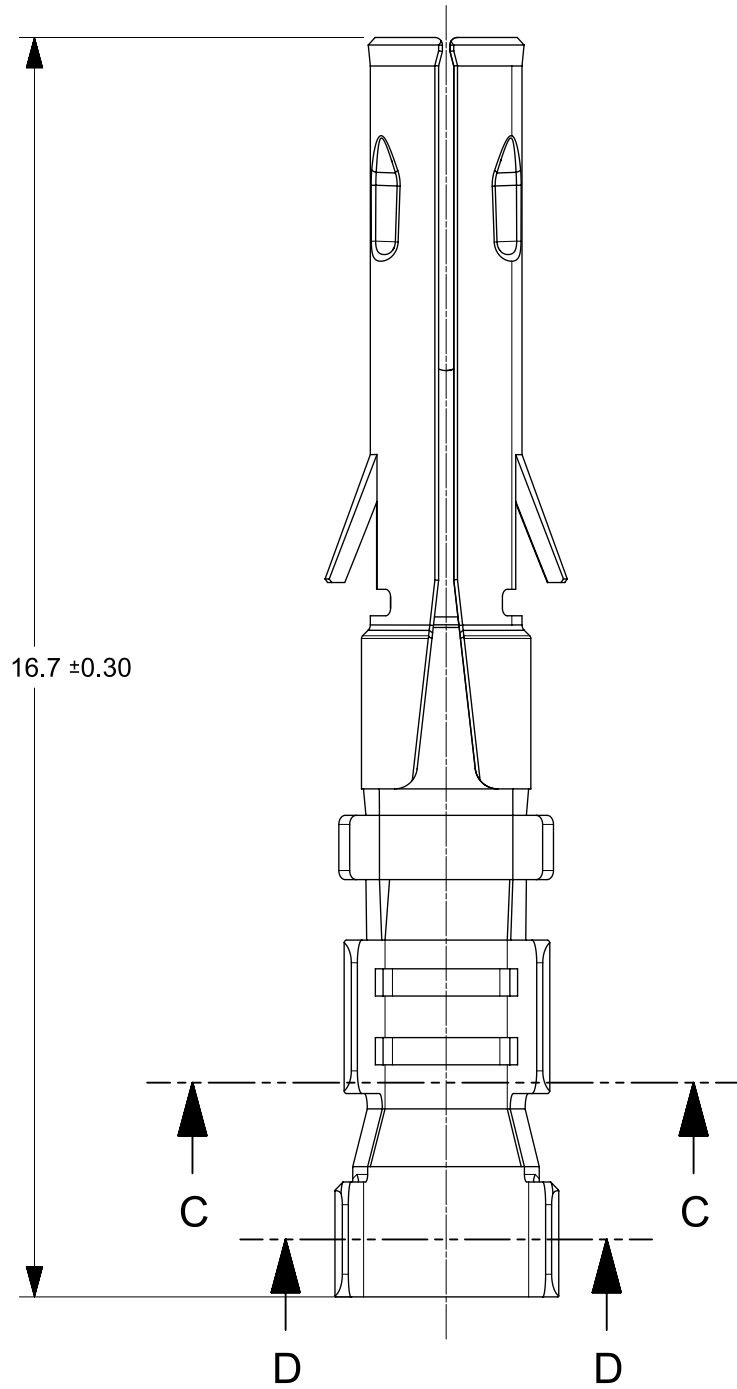
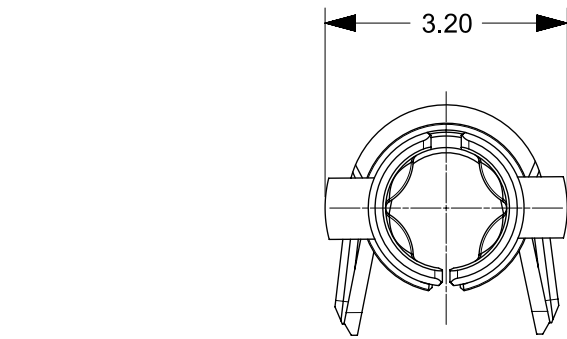
## Contact us

Tel: +86-755-8981 8866 Fax: +86-755-8427 6832

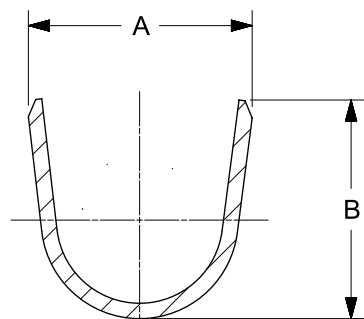
Email & Skype: [info@chipsmall.com](mailto:info@chipsmall.com) Web: [www.chipsmall.com](http://www.chipsmall.com)

Address: A1208, Overseas Decoration Building, #122 Zhenhua RD., Futian, Shenzhen, China

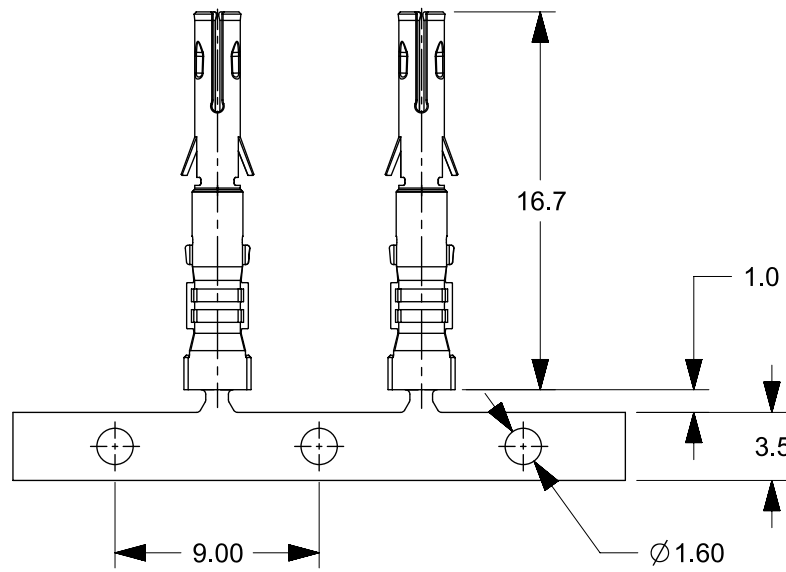




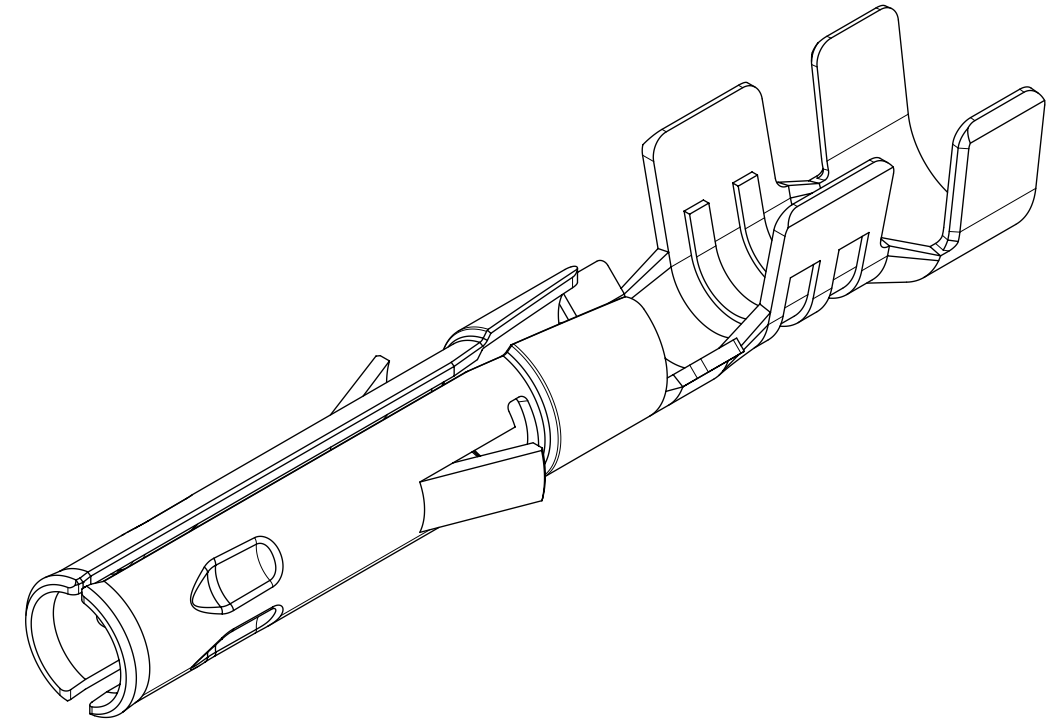
SECTION C-C



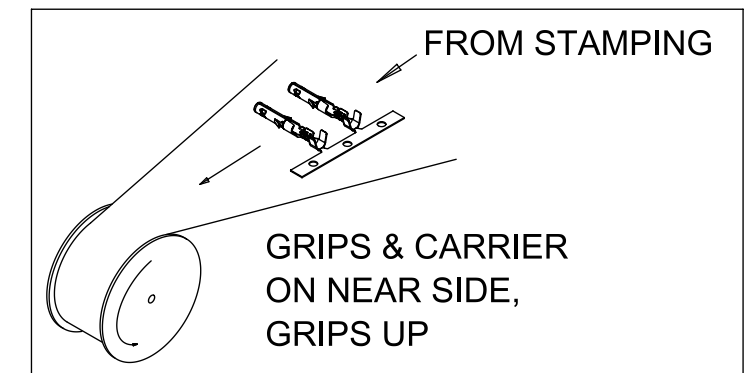
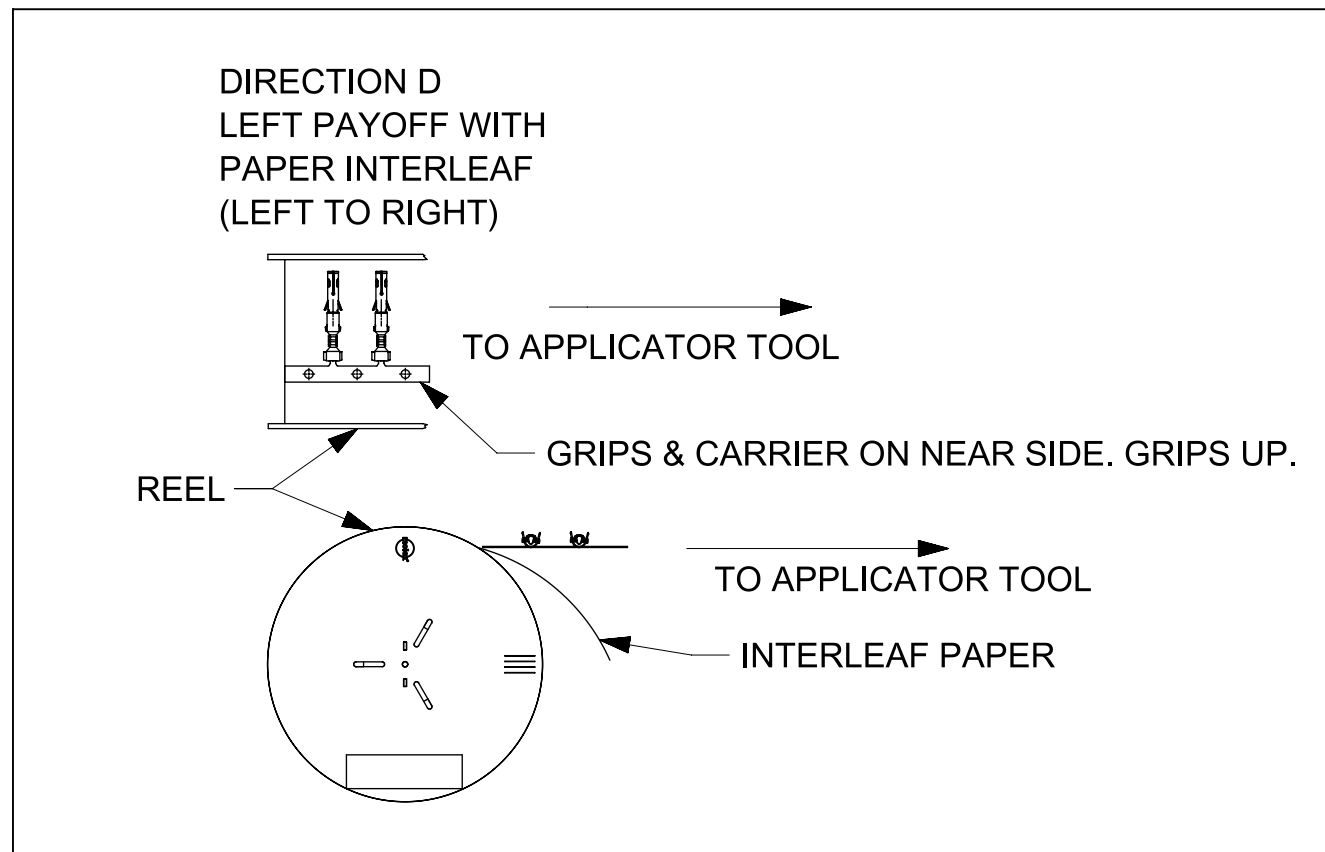
SECTION D-D



STRIP LAYOUT



REELING DIRECTIONS

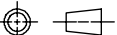


SI. NO	PART NUMBER	WIRE RANGE	WIRE STYLE	DIM A	DIM B	DIM X	DIM Y
1	1501811016	16-18 AWG	16 AWG, UL1061	2.96	2.90	2.72	2.71
			18 AWG, UL1007	2.96	2.90	2.72	2.71
			18 AWG, UL1061	2.96	2.90	2.72	2.71
2	1501811020	20-22 AWG	20 AWG, UL1007	2.58	2.40	2.44	2.03
			20 AWG, UL1061	2.58	2.40	2.44	2.03
			22 AWG, UL1007	2.58	2.40	2.44	2.03
			22 AWG, UL1061	2.58	2.40	2.44	2.03

NOTES:

1. MATERIAL: CARTRIDGE BRASS ALLOY.
2. FINISH: PREPLATED OVERALL TIN ONLY- BRIGHT FINISH AND MIN THICKNESS 1.5µm.
3. PRODUCT SPECIFICATION: 1501760001-PS.
4. PACKAGING SPEC. REFER PK-150180-001.
5. THIS PART CONFORMS TO CLASS B REQUIREMENTS OF COSMETIC SPEC PS-45499-002.
6. TERMINAL TO BE USED WITH SERIES 150178 AND 150179.
7. TERMINAL MATES WITH THE SERIES 150180.

THIS DRAWING CONTAINS INFORMATION THAT IS PROPRIETARY TO MOLEX ELECTRONIC TECHNOLOGIES, LLC AND SHOULD NOT BE USED WITHOUT WRITTEN PERMISSION

EC NO: 107456 DRWN: SNAGARAVENKA CHKD: REV	2016/10/03 2016/10/26 KPRASAD	GENERAL TOLERANCES (UNLESS SPECIFIED)		DIMENSION UNITS		SCALE		<div>molex®</div> <div>ECONOLATCH FEMALE CRIMP TERMINAL</div>			
				MM		10:1					
		ANGULAR TOL ± 0.5 °		DRWN BY		DATE		<div>PRODUCT CUSTOMER DRAWING</div> <div>SERIES150181MATERIAL NUMBERSEE CHARTCUSTOMERGENERAL MARKET</div> <div>DOCUMENT NUMBERSD-150181-0001DOC TYPEPSDDOC PART000SHEET NUMBER1 OF 1</div>			
		4 PLACES ±		SS06		2015/05/28					
		3 PLACES ±		CHK'D BY		DATE					
		2 PLACES ± 0.25		APPR BY		DATE					
		1 PLACE ± 0.35		KPRASAD		2015/06/04					
0 PLACES ±		DRAWING SIZE		THIRD ANGLE PROJECTION							
B	REV	DRAFT WHERE APPLICABLE MUST REMAIN WITHIN DIMENSIONS		A2							

RELEASE STATUS	RELEASE DATE
13	12

11

10

9

8

7

6

5

4

3

2

1