



Chipsmall Limited consists of a professional team with an average of over 10 year of expertise in the distribution of electronic components. Based in Hongkong, we have already established firm and mutual-benefit business relationships with customers from,Europe,America and south Asia,supplying obsolete and hard-to-find components to meet their specific needs.

With the principle of “Quality Parts,Customers Priority,Honest Operation,and Considerate Service”,our business mainly focus on the distribution of electronic components. Line cards we deal with include Microchip,ALPS,ROHM,Xilinx,Pulse,ON,Everlight and Freescale. Main products comprise IC,Modules,Potentiometer,IC Socket,Relay,Connector.Our parts cover such applications as commercial,industrial, and automotives areas.

We are looking forward to setting up business relationship with you and hope to provide you with the best service and solution. Let us make a better world for our industry!



Contact us

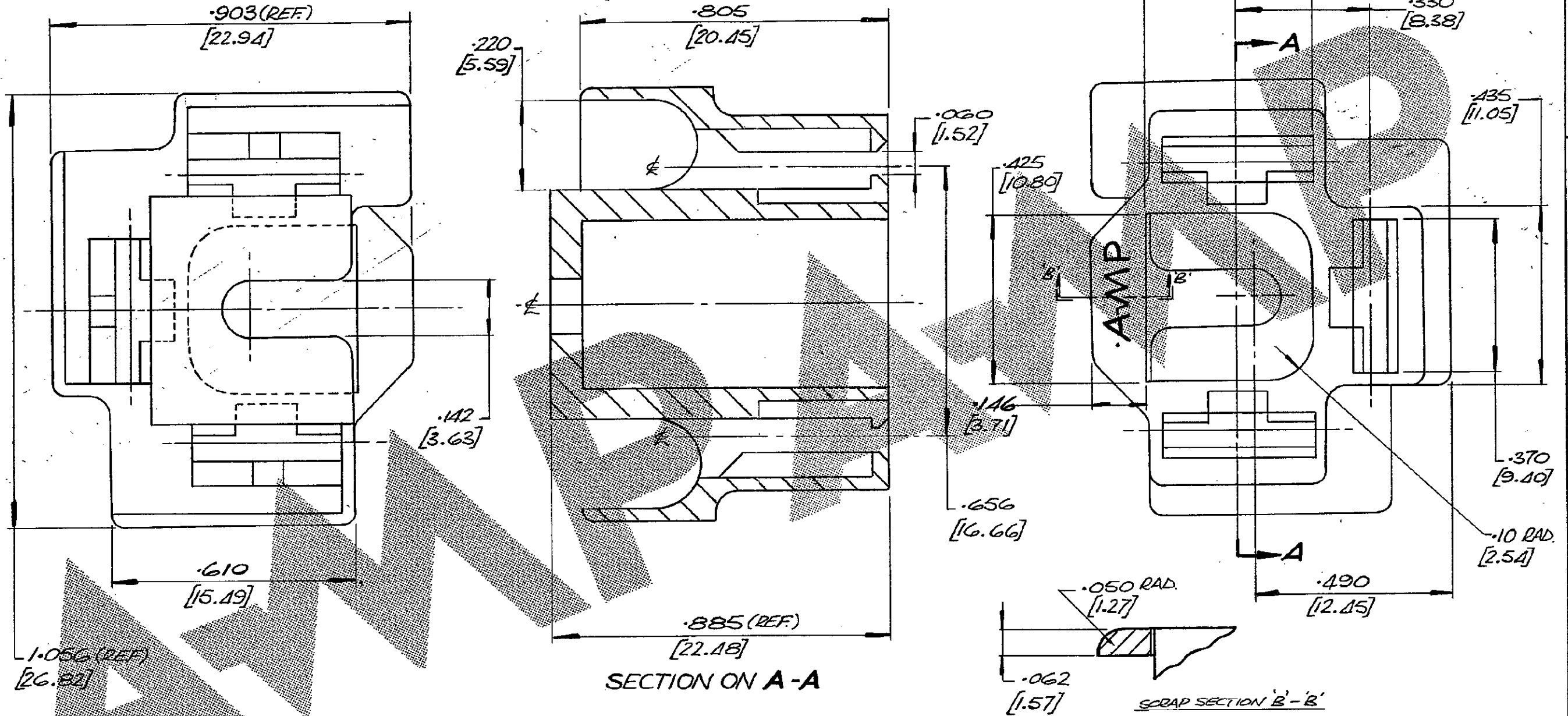
Tel: +86-755-8981 8866 Fax: +86-755-8427 6832

Email & Skype: info@chipsmall.com Web: www.chipsmall.com

Address: A1208, Overseas Decoration Building, #122 Zhenhua RD., Futian, Shenzhen, China



NUMBER
C-150653



1.056 (REF)
[26.82]

.142
[3.63]

.610
[15.49]

SECTION ON A-A

SCRAP SECTION B-B

PART NO:	MATERIAL
150653-1	BLK. CYCOLAC
150653-2	BLK. NYLON
150653-3	GRY CYCOLAC
150653-4	NATURAL NYLON

1 OBSOLETE

1 OBSOLETE PARTS: OBSOLETE CIS STREAMLINING
PER D.RENAUD/D.SINISI

F1	REV PER	ECO-09-026346	KK	AEG	26/11/09	© AMP of GREAT BRITAIN LTD 1963		CUSTOMER COPY REFERENCE ONLY	
F	-4	ADDED	KS	-	3/11/86	MATERIAL AND FINISH		TERMINAL HOUSE, STANMORE, MIDD.	
E	RE-DRAWN	FOR CLARITY	J.P.S.		21.3.79	SEE TABLE		AMP of Great Britain Ltd.	
D	.433	WAS .420			26.5.70	WIRE - RANGE - INSULATION		CLASS	
C	.193	.420	.425	AMEND	20.4.70	TYPE		TOLERANCE EXCEPT AS NOTED	
B	VARIOUS CORRECTIONS.				8.4.70	SCALE		LOC	
ISS	REVISION RECORD				DR	CHK	DATE	NO	
DR	J.P. STOCKWELL				21.3.79	DE		E B	
CHK						APP		C-150653	
						TOLERANCE EXCEPT AS NOTED		SCALE	
						± .015 [0.38] ± 1° 0'		4:1	
						NAME		3 CCT. FASTIN-FASTON RECEPTACLE HOUSING	

PRINT DIST.