



Chipsmall Limited consists of a professional team with an average of over 10 year of expertise in the distribution of electronic components. Based in Hongkong, we have already established firm and mutual-benefit business relationships with customers from,Europe,America and south Asia,supplying obsolete and hard-to-find components to meet their specific needs.

With the principle of "Quality Parts,Customers Priority,Honest Operation,and Considerate Service",our business mainly focus on the distribution of electronic components. Line cards we deal with include Microchip,ALPS,ROHM,Xilinx,Pulse,ON,Everlight and Freescale. Main products comprise IC,Modules,Potentiometer,IC Socket,Relay,Connector.Our parts cover such applications as commercial,industrial, and automotives areas.

We are looking forward to setting up business relationship with you and hope to provide you with the best service and solution. Let us make a better world for our industry!



Contact us

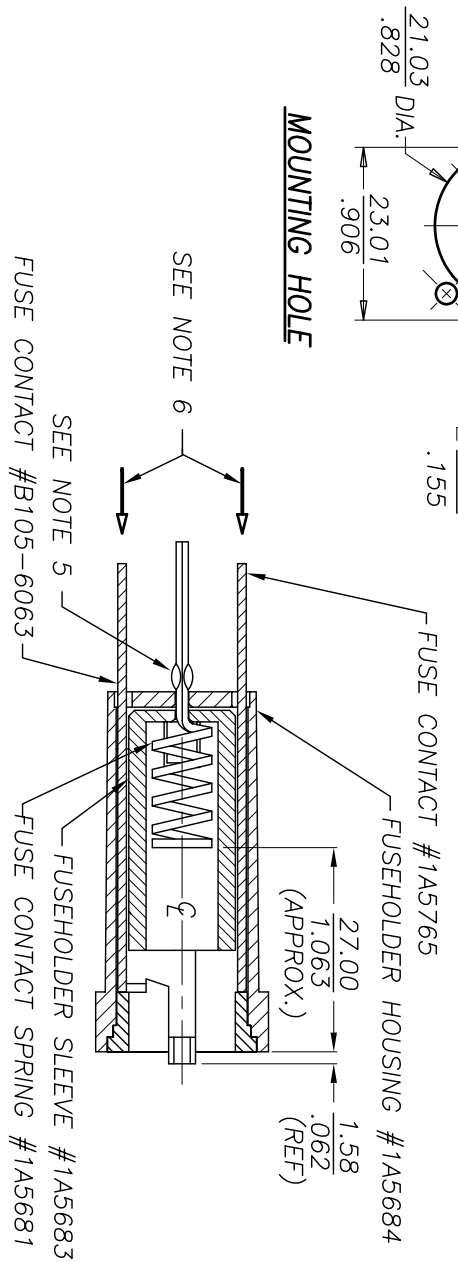
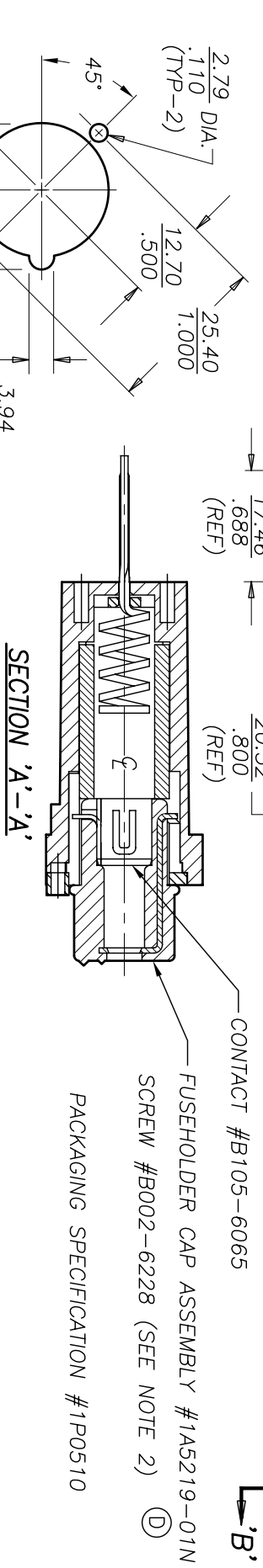
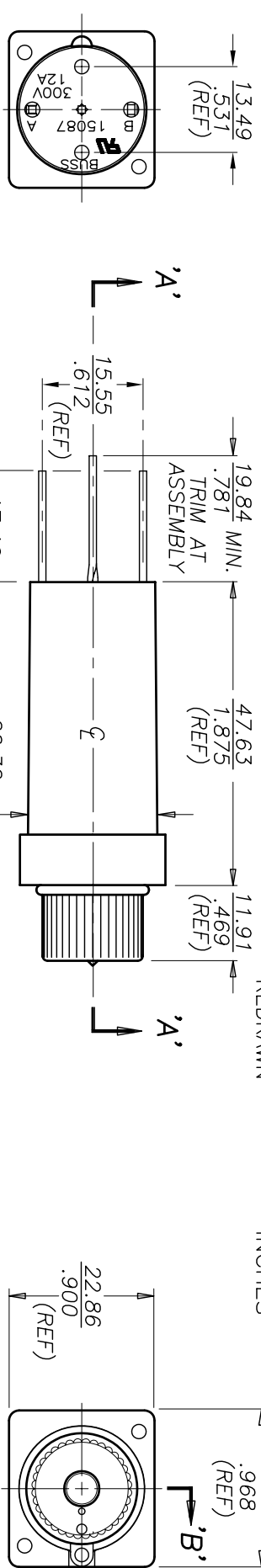
Tel: +86-755-8981 8866 Fax: +86-755-8427 6832

Email & Skype: info@chipsmall.com Web: www.chipsmall.com

Address: A1208, Overseas Decoration Building, #122 Zhenhua RD., Futian, Shenzhen, China



COPYRIGHT Cooper Industries, Inc. This is an unpatented design. The disclosure of this work in any form, in any medium, without the written permission of Cooper Industries, Inc. is prohibited. This unpublished disclosure to the public is prohibited. All rights reserved by Cooper Industries, Inc.		SCALE	UNLESS OTHERWISE SPECIFIED TOLERANCES TO BE:
56	REVISED & REDRAWN	1X	±.13mm ±.005" ANGULAR ±2°
(O) INDICATES CRITICAL DIMENSION OR FEATURE			55197



- SEE NOTE 6
 SEE NOTE 5
- NOTES:
- 1) FUSEHOLDER CAP ASSEMBLY AND FUSEHOLDER HOUSING ASSEMBLY ARE SHOWN ASSEMBLED FOR REFERENCE ONLY. CAP AND HOUSING WILL BE SUPPLIED, NOT ASSEMBLED, PER SUB-ASSEMBLY PART NUMBERS.
 - 2) TWO (2) SCREWS, #B002-6228, SHIPPED BULK WITH EACH ASSEMBLY.
 - 3) U.L. RECOGNIZED UNDER MODEL NO. 15087, FILE NO. E37864.
 - 4) ELECTRICAL RATING: 12 AMPS - 300 VOLTS.
 - 5) PLAINSH TERMINAL, SO SPRING WILL NOT FALL OUT (AT ASSEMBLY).
 - 6) FUSEHOLDER SLEEVE SHALL NOT SEPERATE FROM FUSEHOLDER HOUSING WHEN SUBJECTED TO A 30 LB. FORCE IN THE DIRECTION INDICATED.

MOUNTING HOLE

SEE NOTE 6
 SEE NOTE 5

FUSE CONTACT #B105-6063

FUSEHOLDER SLEEVE #1A5683

FUSE CONTACT SPRING #1A5681

SECTION 'B'-'B'

(KNOB OMITTED FOR CLARITY)