



Chipsmall Limited consists of a professional team with an average of over 10 year of expertise in the distribution of electronic components. Based in Hongkong, we have already established firm and mutual-benefit business relationships with customers from,Europe,America and south Asia,supplying obsolete and hard-to-find components to meet their specific needs.

With the principle of “Quality Parts,Customers Priority,Honest Operation,and Considerate Service”,our business mainly focus on the distribution of electronic components. Line cards we deal with include Microchip,ALPS,ROHM,Xilinx,Pulse,ON,Everlight and Freescale. Main products comprise IC,Modules,Potentiometer,IC Socket,Relay,Connector.Our parts cover such applications as commercial,industrial, and automotives areas.

We are looking forward to setting up business relationship with you and hope to provide you with the best service and solution. Let us make a better world for our industry!



Contact us

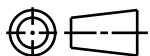
Tel: +86-755-8981 8866 Fax: +86-755-8427 6832

Email & Skype: info@chipsmall.com Web: www.chipsmall.com

Address: A1208, Overseas Decoration Building, #122 Zhenhua RD., Futian, Shenzhen, China



CATIA V5



REFERENCE:

PERFORMANCE REQUIREMENTS AT DRY AS MOLDED:

1. FIR TREE PUSH IN FORCE: 45 NEWTONS (10 LBS) MAX
IN THE APPLICABLE NOMINAL HOLE SIZE AND A
PLATE THICKNESS OF 1.8mm.

2. FIR TREE PULL OUT FORCE: 110 NEWTONS (25 LBS) MIN
IN THE APPLICABLE NOMINAL HOLE SIZE AND A
PLATE THICKNESS OF 1.8mm.

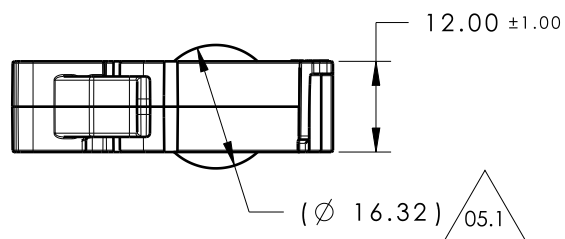
3. SHEET METAL THICKNESS RANGE: 0.60mm - 8.25mm

4. APPLICABLE HOLE SIZE:

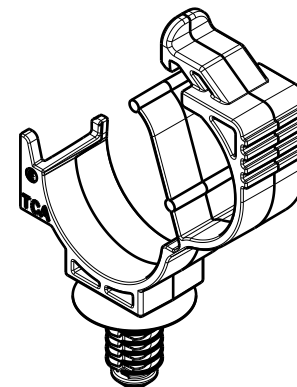
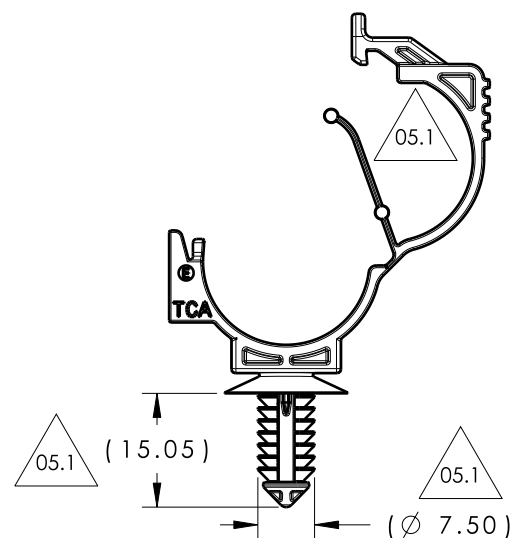
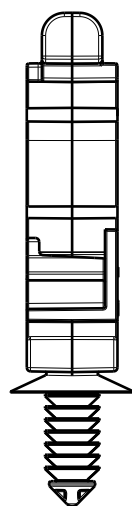
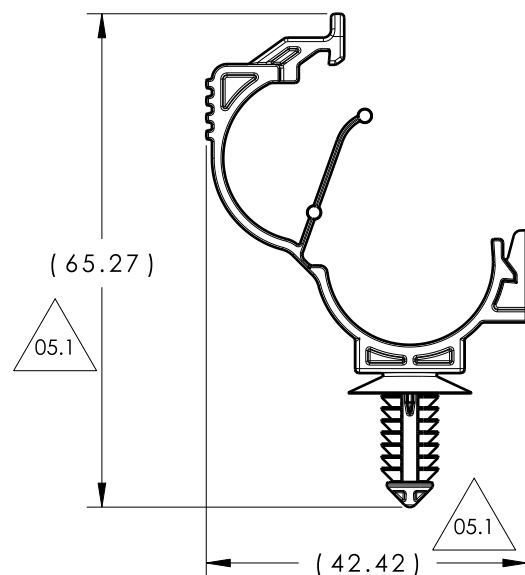
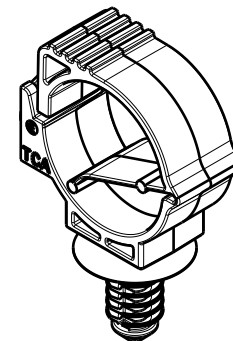
A. 6.5mm +0.5 / - 0.4

B. 6.35mm +/- 0.25 HEX

05.1



05.1

ISOMETRIC VIEW
OPEN POSITIONISOMETRIC VIEW
CLOSED POSITION

TYPE NUMBER	MATERIAL	COLOR
LOC15-19FT6LG	PA66HIRHS	BLACK
LOC15-19FT6LG	PA46	GRAY

Material
SEE CHART
COLOR: SEE CHART

Units millimeters

Tolerance defined on
each dimension

The copyright of this
drawing is reserved by
HellermannTyton. It is
issued on condition that it is
not reproduced, copied or
disclosed to a third party,
either wholly or in part,
without the consent of
HellermannTyton.

Drawn KVH 9/28/12
Approved SJA 9/28/12

HellermannTyton

North America
Email: corp@htamericas.com
Web: www.hellermann.tyton.com

Article/Type-No SEE CHART

Title LOCKING OMEGA CLIP (15 TO 19mm
BUNDLE) WITH FIR TREE

Drawing-No PRODUCTION : Phase

12-0429-011-CSU

Scale 1:1

Project Number
12-0429

Format AH

Sheet 1/1

Revision Level			Revision Record	Changed	Date	Approved	Date
Drawing	State	Part					
05.1	Design Release	E	SEE ECN# 012751	KVH	7/28/14	EJH	8/6/14