



Chipsmall Limited consists of a professional team with an average of over 10 year of expertise in the distribution of electronic components. Based in Hongkong, we have already established firm and mutual-benefit business relationships with customers from,Europe,America and south Asia,supplying obsolete and hard-to-find components to meet their specific needs.

With the principle of “Quality Parts,Customers Priority,Honest Operation,and Considerate Service”,our business mainly focus on the distribution of electronic components. Line cards we deal with include Microchip,ALPS,ROHM,Xilinx,Pulse,ON,Everlight and Freescale. Main products comprise IC,Modules,Potentiometer,IC Socket,Relay,Connector.Our parts cover such applications as commercial,industrial, and automotives areas.

We are looking forward to setting up business relationship with you and hope to provide you with the best service and solution. Let us make a better world for our industry!



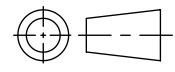
Contact us

Tel: +86-755-8981 8866 Fax: +86-755-8427 6832

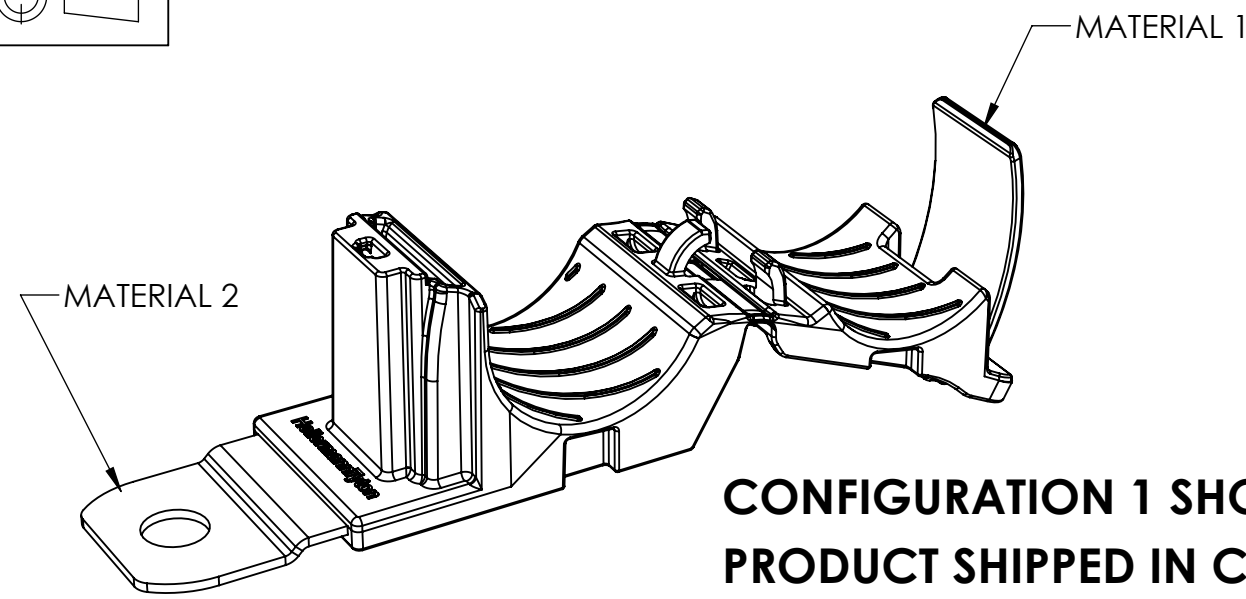
Email & Skype: info@chipsmall.com Web: www.chipsmall.com

Address: A1208, Overseas Decoration Building, #122 Zhenhua RD., Futian, Shenzhen, China

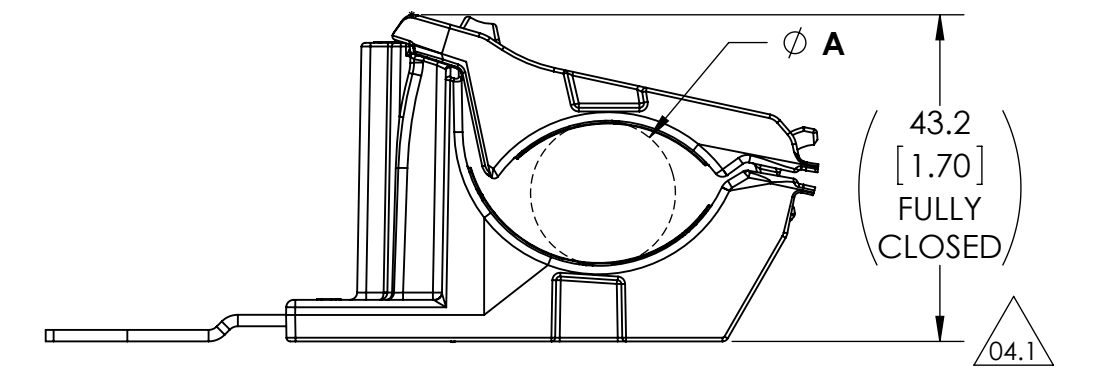




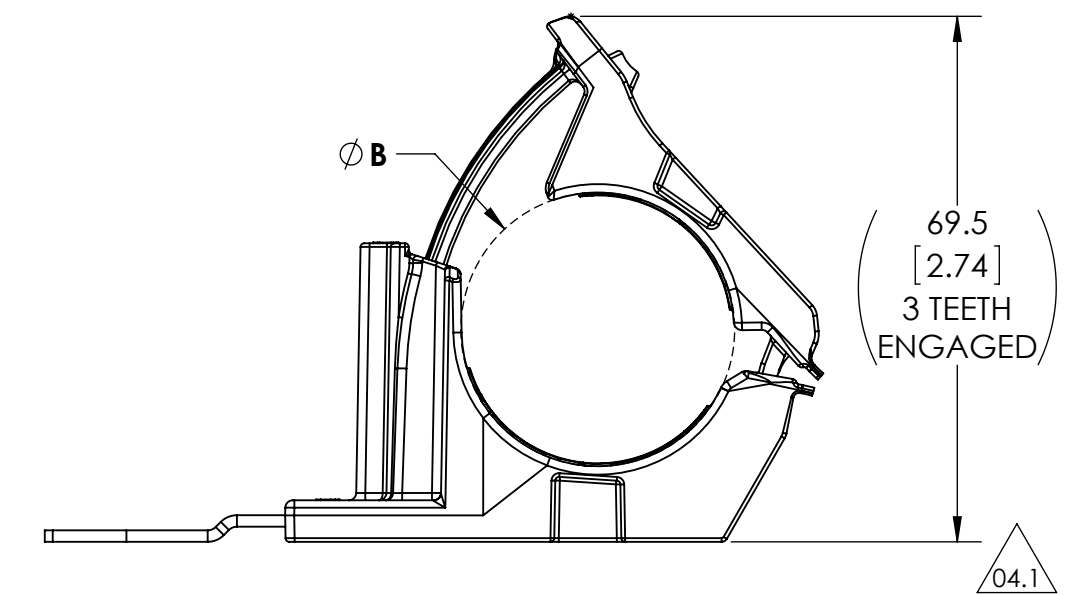
Revision level			Revision Record	Changed	Date	Approved	Date
Drawing	State	Part					
04.1	Design Release	A	SEE ECN# 013325	KEP	3/25/2016	MHT	3/25/2016



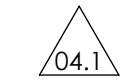
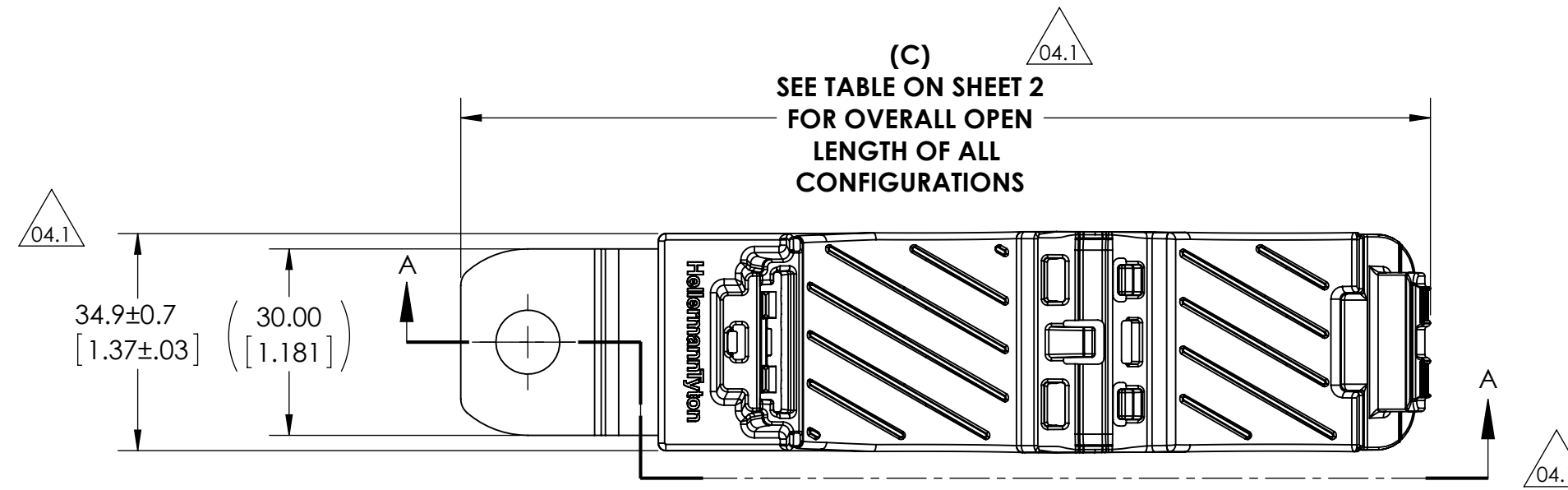
**CONFIGURATION 1 SHOWN
PRODUCT SHIPPED IN CLAMP OPEN POSITION**



MINIMUM BUNDLE DIAMETER



MAXIMUM BUNDLE DIAMETER



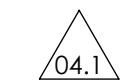
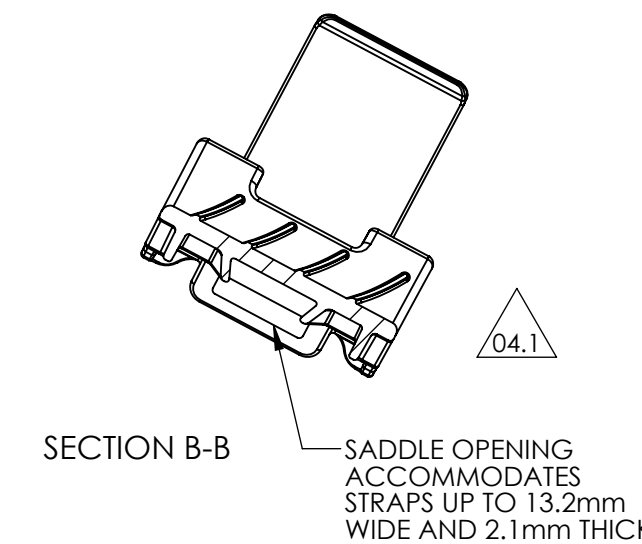
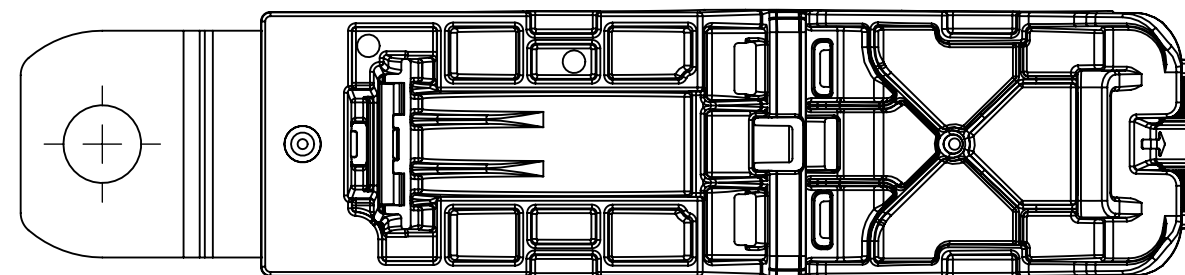
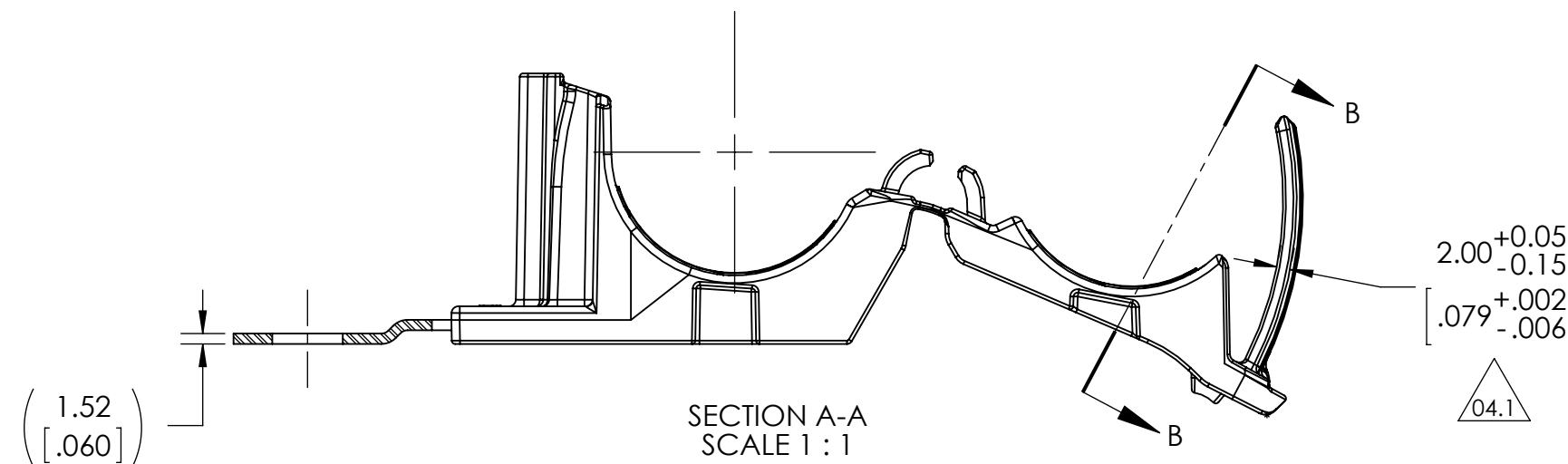
INITIAL MOLD VALIDATION:

1. ITS-0003 RATCHET P CLAMP SOLID MANDREL TEST: EXCEEDED 445 NEWTONS (100 LBS) MIN AT A NOMINAL BUNDLE DIAMETER OF 25.40 [1.000] TESTING ONLY REQUIRED OF CONFIGURATION *RCC180SM10, *RCC180LM10, AND *RCC90LM10 *TESTING CAN BE SUBSTITUTED WITH M6, M8, M12 VERSION MOUNTING HOLES

2. ITS-0008 CLOSE AND RELEASE TEST: EXCEEDED 445 NEWTONS (100 LBS) MIN AT A NOMINAL BUNDLE DIAMETER OF 25.40 [1.000] AFTER CLOSING AND RELEASING 40 TIMES

3. ITS-0014 LOW TEMPERATURE HINGE TEST: NO DAMAGE OCCURED AFTER BENDING LIVING HINGE 40 TIMES AT -40°C

NOTE: TESTING #2 AND #3 CAN BE DONE ON ANY TYPE NUMBER AND WILL APPLY TO ALL OTHER TYPE NUMBERS IN THE TABLE ON SHEET 2



PERFORMANCE REQUIREMENTS:

DRY AS MOLDED WITH ≤ 0.5% MOISTURE CONTENT:

4. ITS-0001 RATCHET P CLAMP SPLIT MANDREL TEST: 445 NEWTONS (100 LBS) MIN AT A NOMINAL BUNDLE DIAMETER OF 25.40 [1.000]

NOTE: TESTING CAN BE DONE ON ANY TYPE NUMBER AND WILL APPLY TO ALL OTHER TYPE NUMBERS IN THE TABLE ON SHEET 2

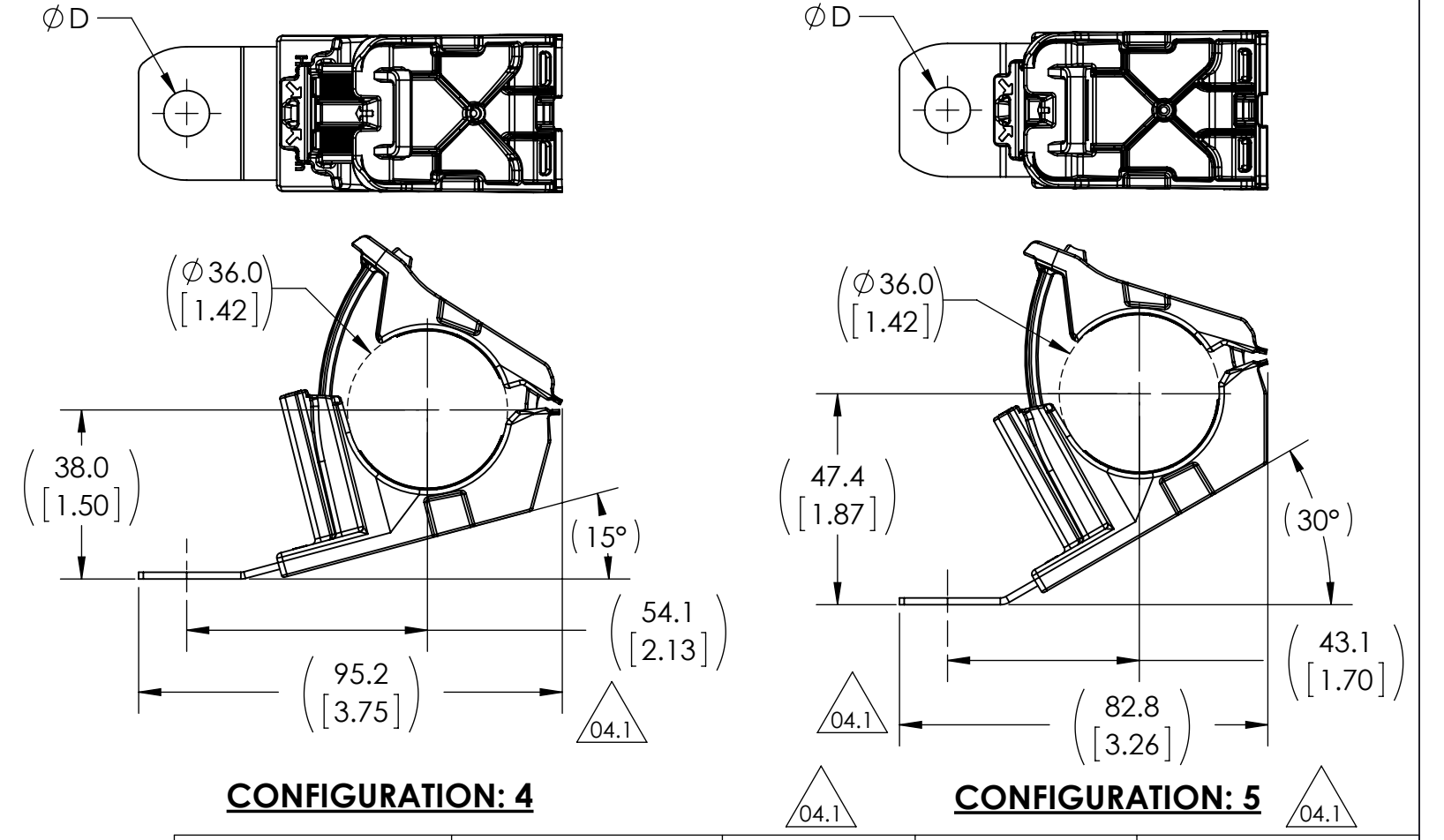
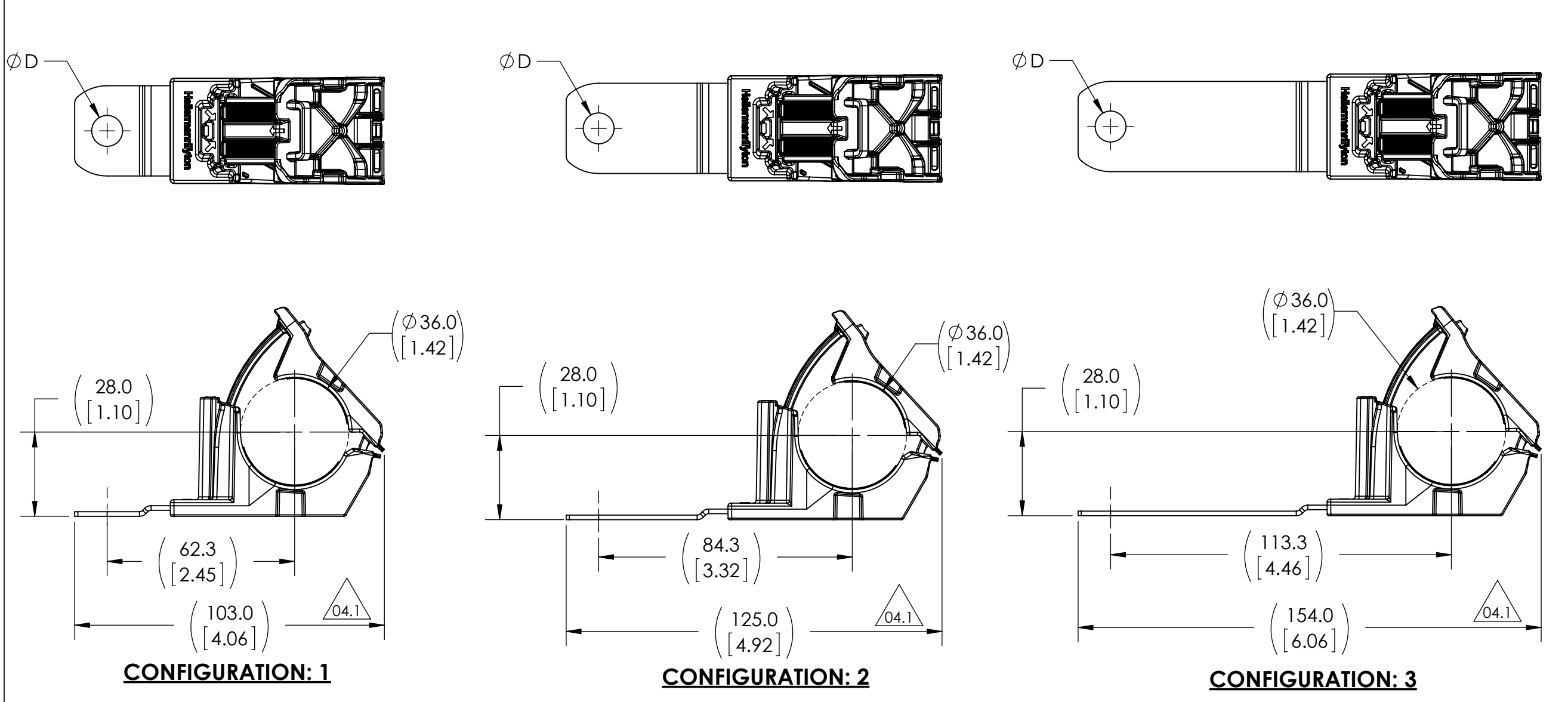
5. MAXIMUM PERCENT REGRIND PERMISSABLE: 25%

6. MAXIMUM ALLOWABLE FLASH OR MISMATCH TO BE: 0.25mm

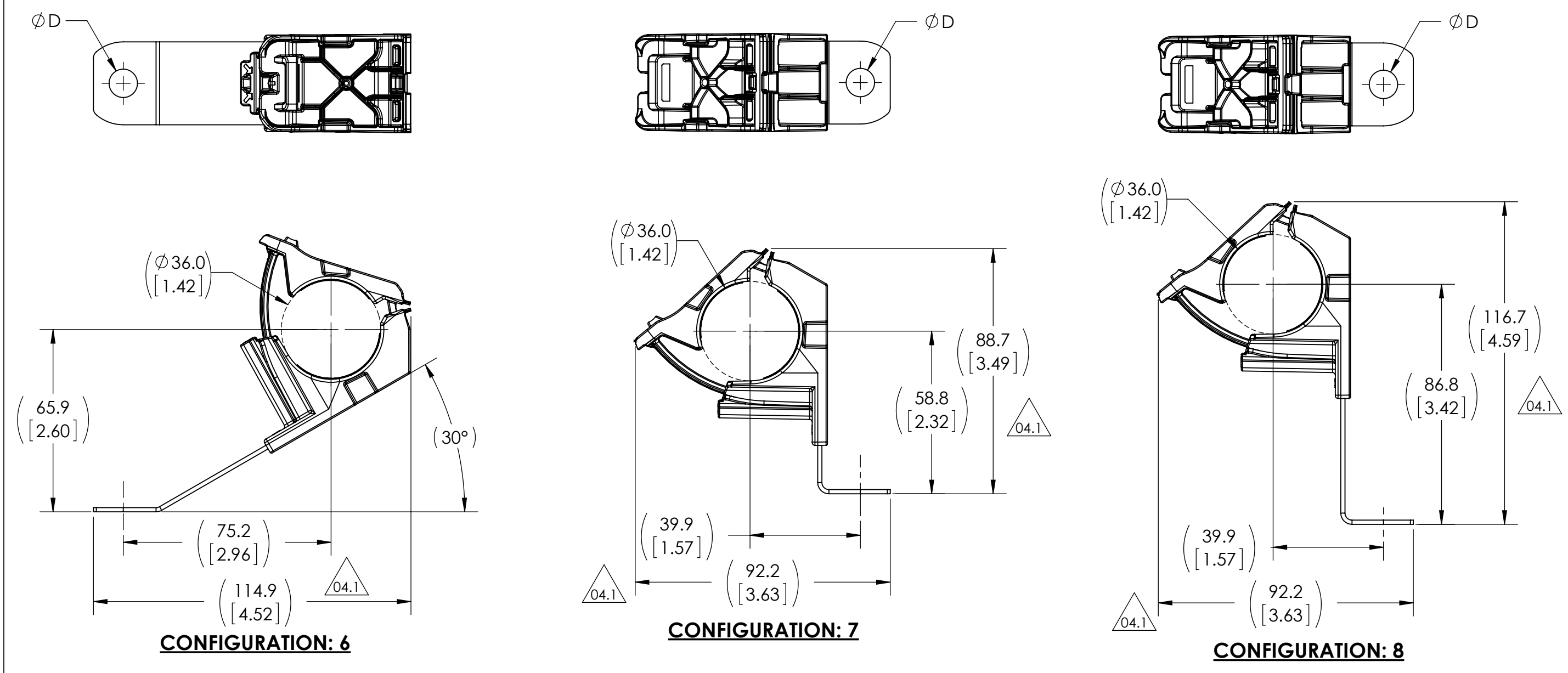
BUNDLE TYPES	A MINIMUM DIAMETER	B MAXIMUM DIAMETER
SOFT	19.4 [.76]	36.0 [1.42]
HARD	18.6 [.73]	35.2 [1.39]

Notes	Material	Units: millimeters	The copyright of this drawing is reserved by HellermannTyton. It is issued on condition that it is not reproduced, copied, or disclosed to a third party, either wholly or in part, without the consent of HellermannTyton.	Drawn	KEP	04/13/2015	Article/Type-No	SEE CHART (SHEET 2)	Scale	1:1
	1. PA66HIRHSUV 2. ZINC PLATED STEEL	Dimension without tolerances details to: .xxx = ±.013 .xx = ±.13 .x = ±.3 None = ±.8 < = ±0.5* Dimension Formatted mm/(in)		Approved	MHT	8/21/2015	Title	RCC RATCHET P CLAMP, SIZE C, CLAMP RANGE 19.4 TO 36.0	Project Number	PRP15-0341
				HellermannTyton North America Email: corp@htamericas.com Web: www.hellermann.tyton.com			Drawing-No	15-0341-103-CSU	Production : Phase	Format
								Sheet	1/2	

Revision level			Revision Record	Changed	Date	Approved	Date
Drawing	State	Part					
04.1	Design Release	A	SEE ECN# 013325	KEP	3/25/2016	MHT	3/25/2016



**ALL VIEWS IN MAXIMUM BUNDLE DIAMETER
PRODUCT SHIPPED IN CLAMP OPEN POSITION**



CONFIGURATION	DESCRIPTION	D ±0.13	TYPE	C - OVERALL OPEN LENGTH REFERENCE (SEE SHEET 1)
1	180° SHORT	6.50 [.256]	RCC180SM6	156.1 [6.15]
		8.31 [.327]	RCC180SM8	
		10.29 [.405]	RCC180SM10	
		12.95 [.510]	RCC180SM12	
2	180° MEDIUM	6.50 [.256]	RCC180MM6	178.1 [7.01]
		8.31 [.327]	RCC180MM8	
		10.29 [.405]	RCC180MM10	
3	180° LONG	6.50 [.256]	RCC180LM6	207.1 [8.15]
		8.31 [.327]	RCC180LM8	
		10.29 [.405]	RCC180LM10	
4	15° SHORT	6.50 [.256]	RCC15SM6	155.5 [6.12]
		8.31 [.327]	RCC15SM8	
		10.29 [.405]	RCC15SM10	
5	30° SHORT	6.50 [.256]	RCC30SM6	153.4 [6.04]
		8.31 [.327]	RCC30SM8	
		10.29 [.405]	RCC30SM10	
6	30° LONG	6.50 [.256]	RCC30LM6	190.4 [7.50]
		8.31 [.327]	RCC30LM8	
		10.29 [.405]	RCC30LM10	
7	90° SHORT	6.50 [.256]	RCC90SM6	141.8 [5.58]
		8.31 [.327]	RCC90SM8	
		10.29 [.405]	RCC90SM10	
8	90° LONG	6.50 [.256]	RCC90LM6	169.8 [6.69]
		8.31 [.327]	RCC90LM8	
		10.29 [.405]	RCC90LM10	
		12.95 [.510]	RCC90LM12	

Notes	Material	Units: millimeters	Drawn	KEP	04/13/2015	Article/Type-No	SEE CHART	Scale	2:3		
	1. PA66HIRHSUV 2. ZINC PLATED STEEL	Dimension without tolerances details to: .xxx = ±.013 .xx = ±.13 .x = ±.3 None = ±.8 ∠ = ±0.5° Dimension Formatted mm/(in)	Approved	MHT	8/21/2015	Title	RCC RATCHET P CLAMP, SIZE C, CLAMP RANGE 19.4 TO 36.0	Project Number	PRP15-0341		
			The copyright of this drawing is reserved by HellermannTyton. It is issued on condition that it is not reproduced, copied, or disclosed to a third party, either wholly or in part, without the consent of HellermannTyton.			HellermannTyton North America Email: corp@htamericas.com Web: www.hellermann.tyton.com		Drawing-No	15-0341-103-CSU	Format	C
								Production : Phase		Sheet	2/2