



Chipsmall Limited consists of a professional team with an average of over 10 year of expertise in the distribution of electronic components. Based in Hongkong, we have already established firm and mutual-benefit business relationships with customers from,Europe,America and south Asia,supplying obsolete and hard-to-find components to meet their specific needs.

With the principle of “Quality Parts,Customers Priority,Honest Operation,and Considerate Service”,our business mainly focus on the distribution of electronic components. Line cards we deal with include Microchip,ALPS,ROHM,Xilinx,Pulse,ON,Everlight and Freescale. Main products comprise IC,Modules,Potentiometer,IC Socket,Relay,Connector.Our parts cover such applications as commercial,industrial, and automotives areas.

We are looking forward to setting up business relationship with you and hope to provide you with the best service and solution. Let us make a better world for our industry!



Contact us

Tel: +86-755-8981 8866 Fax: +86-755-8427 6832

Email & Skype: info@chipsmall.com Web: www.chipsmall.com

Address: A1208, Overseas Decoration Building, #122 Zhenhua RD., Futian, Shenzhen, China



Änderungsstand / Revision level		Beschreibung der Änderung / Revision Record	Geändert / Changed	Datum Date	Geprüft / Approved	Datum Date
Solid / part	Zeichnung / drawing					
0	0	EC15 hinzu.	Mueller	27.05.05	Schiwek	27.05.05

Blechdicke / Panel thickness

1-3 mm



Werkstoff / Material

Farbe / Colour

PA 6.6 hitzestabilisiert,
schlagzäh, schwarz
PA 6.6 heatstabilized,
impact resistant modified,
black



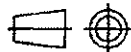
Toleranzen / Tolerances

Masse ohne Toleranzangaben nach
Dimension without tolerances
details to

DM 16901 /

AUSFÜHRUNG / PERFORMANCE
SPEZIFIKATION / SPEC.

CATIA
4.2.4



Gez. / Drawn 27.01.04 Bayer

Gepr. / Appr. 27.01.04 Spiesz

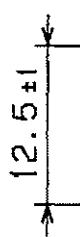
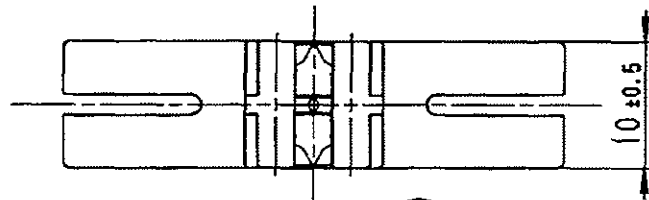
HellermannTyton
HellermannTyton GmbH

Grosser Markt 45, 25436 Tornesch
Telefon: 04122 / 701-1
Telefax: 04122 / 701-400

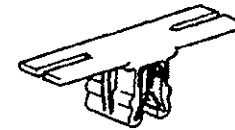
Haftung sowie Vervielfältigung dieser
Unterlage, Vervielfältigung und Mitteilung ihres
Inhalts nicht gestattet, soweit nicht aus-
drücklich zugestanden. Zuförderhandlungen
verpflichten zu Schadensersatz. Alle Rechte
für den Fall der Patenterteilung oder
Gebrauchsmuster-Eintragung vorbehalten.
The copyright of this drafting is reserved
by HELLERMANN TYTON GMBH. It is issued
on condition that it is not reproduced,
copied or disclosed to a third party, either
wholly or in part, without the consent of
HELLERMANN TYTON GMBH.



Nur zur Information,
wird vom Änderungsdienst
nicht erfaßt.
For information only,
not subject to alteration service.



40 ± 1



1:1

Blechklammer TE4-834-000-K
Clamp TE4-834-000-K



Masstab / Scale 2:1; 1:1

NT-721-03

Benennung / Title

Edgeclip 15
EC15

Zeichnungs-Nr. / Drawing-No

14.1725

Format
B.Size A4

Blatt
Sheet