



Chipsmall Limited consists of a professional team with an average of over 10 year of expertise in the distribution of electronic components. Based in Hongkong, we have already established firm and mutual-benefit business relationships with customers from,Europe,America and south Asia,supplying obsolete and hard-to-find components to meet their specific needs.

With the principle of “Quality Parts,Customers Priority,Honest Operation,and Considerate Service”,our business mainly focus on the distribution of electronic components. Line cards we deal with include Microchip,ALPS,ROHM,Xilinx,Pulse,ON,Everlight and Freescale. Main products comprise IC,Modules,Potentiometer,IC Socket,Relay,Connector.Our parts cover such applications as commercial,industrial, and automotives areas.

We are looking forward to setting up business relationship with you and hope to provide you with the best service and solution. Let us make a better world for our industry!



Contact us

Tel: +86-755-8981 8866 Fax: +86-755-8427 6832

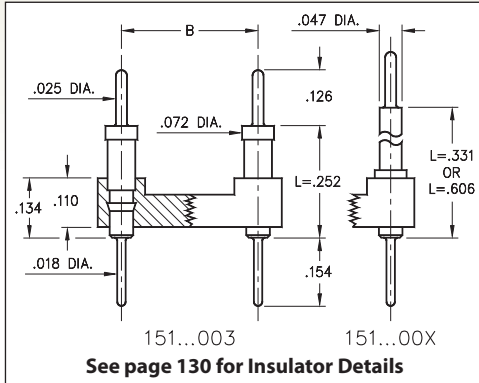
Email & Skype: info@chipsmall.com Web: www.chipsmall.com

Address: A1208, Overseas Decoration Building, #122 Zhenhua RD., Futian, Shenzhen, China



DUAL-IN-LINE HEADERS

SERIES 151...003, 004, 005 • INTERCONNECT • OPEN FRAME



- Series 151 DIL Headers combine .025" dia. tails with pluggable .018" dia. solder tails
- Series:
 - 151...003 uses MM #5503 pins
 - 151...004 uses MM #5504 pins
 - 151...005 uses MM #5505 pins
 See page 214 for details
- Insulators are high temperature thermoplastic, suitable for all soldering operations
- For Electrical, Mechanical and Environmental Data, see page 264 for details



Total number of pins				Quantity per tube	ORDERING INFORMATION					
	A	B	C		L = .252	L = .331	L = .606			
10	0.5	0.2	0.3	41	151-10-210-00-003000	151-10-210-00-004000	151-10-210-00-005000			
4	0.2	0.3	0.4	102	151-10-304-00-003000	151-10-304-00-004000	151-10-304-00-005000			
6	0.3	0.3	0.4	67	151-10-306-00-003000	151-10-306-00-004000	151-10-306-00-005000			
8	0.4	0.3	0.4	50	151-10-308-00-003000	151-10-308-00-004000	151-10-308-00-005000			
10	0.5	0.3	0.4	40	151-10-310-00-003000	151-10-310-00-004000	151-10-310-00-005000			
14	0.7	0.3	0.4	28	151-10-314-00-003000	151-10-314-00-004000	151-10-314-00-005000			
16	0.8	0.3	0.4	25	151-10-316-00-003000	151-10-316-00-004000	151-10-316-00-005000			
18	0.9	0.3	0.4	22	151-10-318-00-003000	151-10-318-00-004000	151-10-318-00-005000			
20	1.0	0.3	0.4	20	151-10-320-00-003000	151-10-320-00-004000	151-10-320-00-005000			
22	1.1	0.3	0.4	18	151-10-322-00-003000	151-10-322-00-004000	151-10-322-00-005000			
24	1.2	0.3	0.4	16	151-10-324-00-003000	151-10-324-00-004000	151-10-324-00-005000			
28	1.4	0.3	0.4	14	151-10-328-00-003000	151-10-328-00-004000	151-10-328-00-005000			
20	1.0	0.4	0.5	20	151-10-420-00-003000	151-10-420-00-004000	151-10-420-00-005000			
22	1.1	0.4	0.5	18	151-10-422-00-003000	151-10-422-00-004000	151-10-422-00-005000			
24	1.2	0.4	0.5	16	151-10-424-00-003000	151-10-424-00-004000	151-10-424-00-005000			
28	1.4	0.4	0.5	14	151-10-428-00-003000	151-10-428-00-004000	151-10-428-00-005000			
32	1.6	0.4	0.5	12	151-10-432-00-003000	151-10-432-00-004000	151-10-432-00-005000			
24	1.2	0.6	0.7	16	151-10-624-00-003000	151-10-624-00-004000	151-10-624-00-005000			
28	1.4	0.6	0.7	14	151-10-628-00-003000	151-10-628-00-004000	151-10-628-00-005000			
32	1.6	0.6	0.7	12	151-10-632-00-003000	151-10-632-00-004000	151-10-632-00-005000			
36	1.8	0.6	0.7	11	151-10-636-00-003000	151-10-636-00-004000	151-10-636-00-005000			
40	2.0	0.6	0.7	10	151-10-640-00-003000	151-10-640-00-004000	151-10-640-00-005000			
42	2.1	0.6	0.7	9	151-10-642-00-003000	151-10-642-00-004000	151-10-642-00-005000			
48	2.4	0.6	0.7	8	151-10-648-00-003000	151-10-648-00-004000	151-10-648-00-005000			
50	2.5	0.6	0.7	8	151-10-650-00-003000	151-10-650-00-004000	151-10-650-00-005000			
52	2.6	0.6	0.7	7	151-10-652-00-003000	151-10-652-00-004000	151-10-652-00-005000			
50	2.5	0.9	1.0	8	151-10-950-00-003000	151-10-950-00-004000	151-10-950-00-005000			
52	2.6	0.9	1.0	7	151-10-952-00-003000	151-10-952-00-004000	151-10-952-00-005000			
64	3.2	0.9	1.0	6	151-10-964-00-003000	151-10-964-00-004000	151-10-964-00-005000			
XX=Plating Code See to Right					SPECIFY PLATING CODE XX =			10		
					Pin Plating			10 μ" Au		

