



Chipsmall Limited consists of a professional team with an average of over 10 year of expertise in the distribution of electronic components. Based in Hongkong, we have already established firm and mutual-benefit business relationships with customers from,Europe,America and south Asia,supplying obsolete and hard-to-find components to meet their specific needs.

With the principle of “Quality Parts,Customers Priority,Honest Operation,and Considerate Service”,our business mainly focus on the distribution of electronic components. Line cards we deal with include Microchip,ALPS,ROHM,Xilinx,Pulse,ON,Everlight and Freescale. Main products comprise IC,Modules,Potentiometer,IC Socket,Relay,Connector.Our parts cover such applications as commercial,industrial, and automotives areas.

We are looking forward to setting up business relationship with you and hope to provide you with the best service and solution. Let us make a better world for our industry!



Contact us

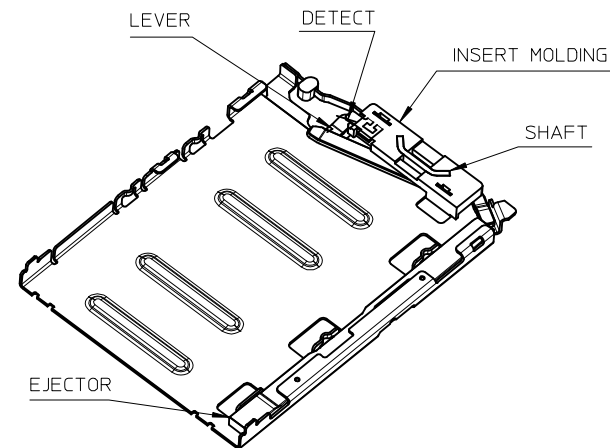
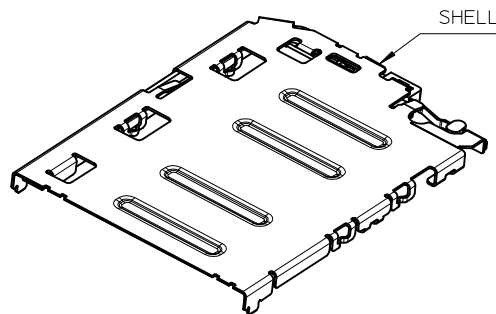
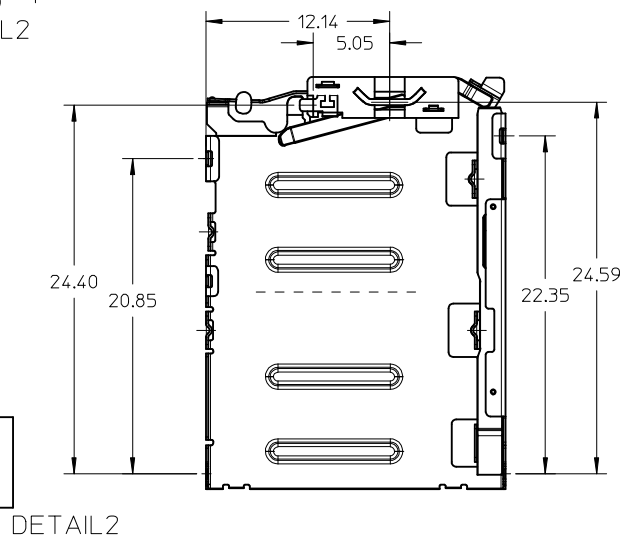
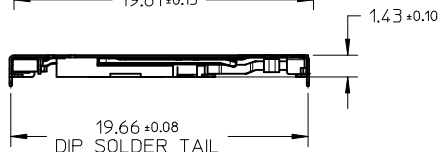
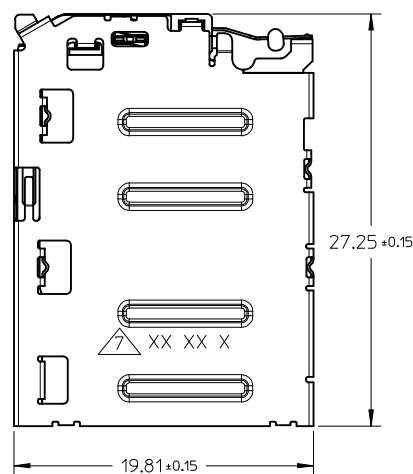
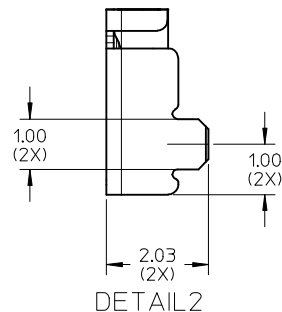
Tel: +86-755-8981 8866 Fax: +86-755-8427 6832

Email & Skype: info@chipsmall.com Web: www.chipsmall.com

Address: A1208, Overseas Decoration Building, #122 Zhenhua RD., Futian, Shenzhen, China



THIS DESIGN IS BASED ON DESIGN OBJECTIVES AND IS STRICTLY TENTATIVE. IT MAY CHANGE BASED ON RESULTS OF ADDITIONAL DESIGN REVIEWS & VERIFICATIONS.



NOTES:

1. MATERIALS:
INSERT MOLD HOUSING: LCP, UL94V-0;
LEVER, SHAFT, EJECTOR, SHELL: STAINLESS STEEL;
DETECT SPRING: COPPER ALLOY;
2. FINISHES:
DETECT SPRING:
1.27um MIN. NICKEL UNDERPLATING OVERALL;
0.127um MIN. GOLD PLATING ON CONTACT AREA;
1.27 um MIN. TIN PLATING ON SOLDERING TAIL;
SHELL:
1.27um MIN NICKEL UNDERPLATING OVERALL;
0.025um MIN GOLD PLATING ON CONTACT AREA AND SOLDERING AREA;
SHAFT: 1.27um MIN TIN ON SOLDERING TAIL;
3. PRODUCT SPECIFICATION: PS-151031-2001;
4. PACKAGING SPECIFICATION: PK-151031-0001;
5. SOLDER TAIL COPLANARITY: 0.10 MM MAX BEFORE REFLOW
6. THIS PART IS A FRAME ONLY, IT SHOULD BE USED TOGETHER WITH 0.38MM BLOCK SIM 151130 FOR AN ENTIRE SIM POP OUT SYSTEM;
7. DATE CODE PRINTED: XX XX X

DAY
WEEK
YEAR

UPDATED DRAWING FOR TYPE EC NO: S2015-1182 DRWN: JZENG CHKD: JTAN02 APPR: KHLIM	DESCRIPTION	QUALITY SYMBOLS <div>FA=0</div> <div>FG=0</div> <div>FP=0</div>	GENERAL TOLERANCES (UNLESS SPECIFIED)			DIMENSION STYLE MM ONLY		SCALE NTS	DESIGN UNITS METRIC	THIRD ANGLE PROJECTION					
				mm	INCH	DRAWN BY JZENG	DATE 2014/07/01	TITLE DUAL SIM FRAME CONNECTOR 1.43H							
			4 PLACES	± ---	± ---	CHECKED BY JTAN02	DATE 2014/07/01								
			3 PLACES	± ---	± ---	APPROVED BY					DATE				
			2 PLACES	± 0.20	± ---										
			1 PLACE	± 0.20	± ---										
0 PLACE	± ---	± ---	MATERIAL NO. 1510312001					DOCUMENT NO. SD-151031-0001					SHEET NO. 1 OF 5		
ANGULAR ± 3 °															
DRAFT WHERE APPLICABLE MUST REMAIN WITHIN DIMENSIONS			THIS DRAWING CONTAINS INFORMATION THAT IS PROPRIETARY TO MOLEX INCORPORATED AND SHOULD NOT BE USED WITHOUT WRITTEN PERMISSION												

10 9 8 7 6 5 4 3 2 1

F

E

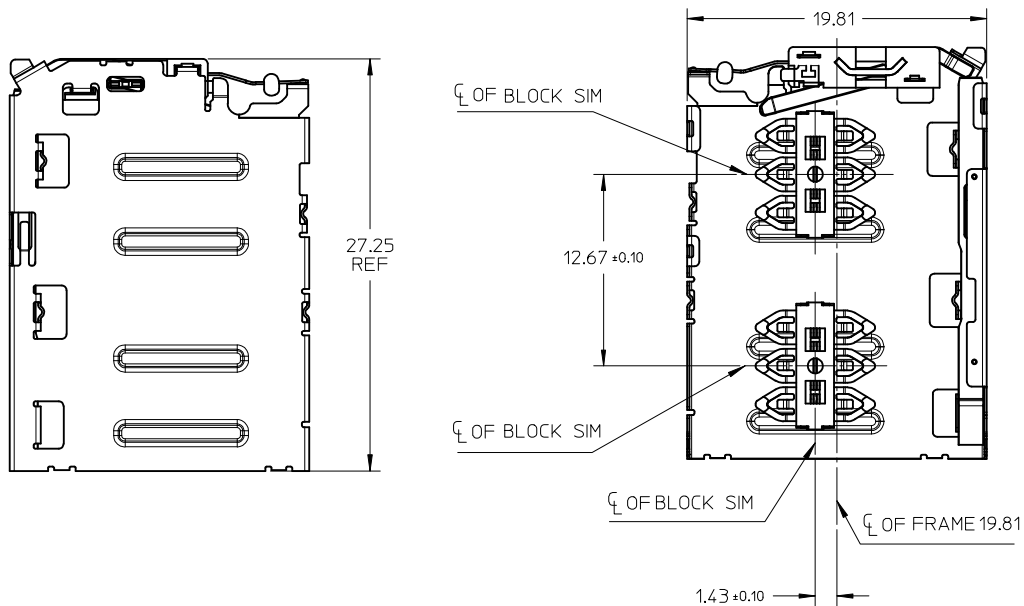
D

C

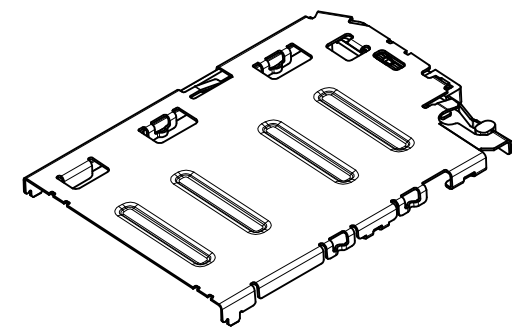
B

A

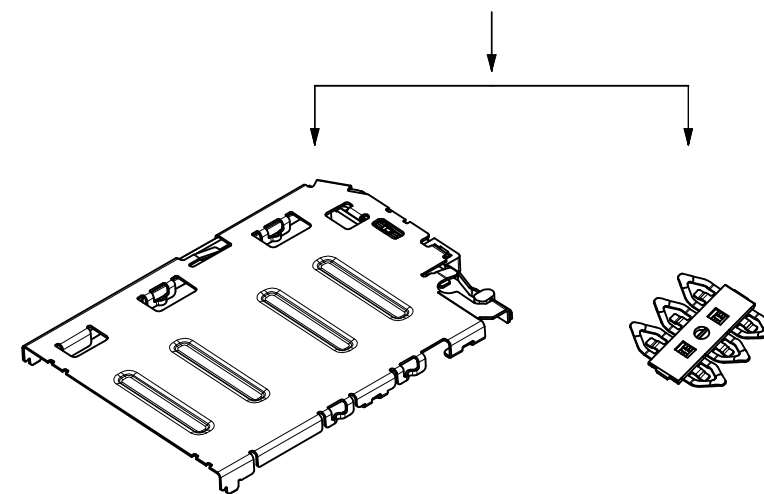
SIM CONNECTOR
(WITH 151130 BLOCK SIM CONNECTOR)



SIM CONNECTOR BOM



FRAME + BLOCK SIM



151031 SERIES

151130 SERIES

THIS DESIGN IS BASED ON DESIGN OBJECTIVES
AND IS STRICTLY TENTATIVE. IT MAY CHANGE
BASED ON RESULTS OF ADDITIONAL DESIGN
REVIEWS & VERIFICATIONS.

SEE SHEET1 EC NO: S2015-1182 DRWN: JZENG CHKD: JTAN02 APPR: KHLIM 12	2015/06/29 2015/07/07 2015/07/22	DESCRIPTION REV	QUALITY SYMBOLS <div><div><div><div><div></div></div><div><div></div></div></div><div><div></div></div><div><div></div></div></div><div><div></div></div><div><div></div></div></div> <div><div></div></div> <div><div></div></div> <div><div></div></div> <div><div></div></div> <div><div></div></div> <div><div></div></div> <div><div></div></div> <div><div></div></div> <div><div></div></div> <div><div></div></div> <div><div></div></div> <div><div></div></div> <div><div></div></div> <div><div></div></div> <div><div></div></div> <div><div></div></div> <div><div></div></div> <div><div></div></div> <div><div></div></div> <div><div></div></div> <div><div></div></div> <div><div></div></div> <div><div></div></div> <div><div></div></div> <div><div></div></div> <div><div></div></div> <div><div></div></div> <div><div></div></div> <div><div></div></div> <div><div></div></div> <div><div></div></div> <div><div></div></div> <div><div></div></div> <div><div></div></div> <div><div></div></div> <div><div></div></div> <div><div></div></div> <div><div></div></div> <div><div></div></div> <div><div></div></div> <div><div></div></div> <div><div></div></div> <div><div></div></div> <div><div></div></div> <div><div></div></div> <div><div></div></div> <div><div></div></div> <div><div></div></div> <div><div></div></div> <div><div></div></div> <div><div></div></div> <div><div></div></div> <div><div></div></div> <div><div></div></div> <div><div></div></div> <div><div></div></div> <div><div></div></div> <div><div></div></div> <div><div></div></div> <div><div></div></div> <div><div></div></div> <div><div></div></div> <div><div></div></div> <div><div></div></div> <div><div></div></div> <div><div></div></div> <div><div></div></div> <div><div></div></div> <div><div></div></div> <div><div></div></div> <div><div></div></div> <div><div></div></div> <div><div></div></div> <div><div></div></div> <div><div></div></div> <div><div></div></div> <div><div></div></div> <div><div></div></div> <div><div></div></div> <div><div></div></div> <div><div></div></div> <div><div></div></div> <div><div></div></div> <div><div></div></div> <div><div></div></div> <div><div></div></div> <div><div></div></div> <div><div></div></div> <div><div></div></div> <div><div></div></div> <div><div></div></div> <div><div></div></div> <div><div></div></div> <div><div></div></div> <div><div></div></div> <div><div></div></div> <div><div></div></div> <div><div></div></div> <div><div></div></div> <div><div></div></div> <div><div></div></div> <div><div></div></div> <div><div></div></div> <div><div></div></div> <div><div></div></div> <div><div></div></div> <div><div></div></div> <div><div></div></div> <div><div></div></div> <div><div></div></div> <div><div></div></div> <div><div></div></div> <div><div></div></div> <div><div></div></div> <div><div></div></div> <div><div></div></div> <div><div></div></div> <div><div></div></div> <div><div></div></div> <div><div></div></div> <div><div></div></div> <div><div></div></div> <div><div></div></div> <div><div></div></div> <div><div></div></div> <div><div></div></div> <div><div></div></div> <div><div></div></div> <div><div></div></div> <div><div></div></div> <div><div></div></div> <div><div></div></div> <div><div></div></div> <div><div></div></div> <div><div></div></div> <div><div></div></div> <div><div></div></div> <div><div></div></div> <div><div></div></div> <div><div></div></div> <div><div></div></div> <div><div></div></div> <div><div></div></div> <div><div></div></div> <div><div></div></div> <div><div></div></div> <div><div></div></div> <div><div></div></div> <div><div></div></div> <div><div></div></div> <div><div></div></div> <div><div></div></div> <div><div></div></div> <div><div></div></div> <div><div></div></div> <div><div></div></div> <div><div></div></div> <div><div></div></div> <div><div></div></div> <div><div></div></div> <div><div></div></div> <div><div></div></div> <div><div></div></div> <div><div></div></div> <div><div></div></div> <div><div></div></div> <div><div></div></div> <div><div></div></div> <div><div></div></div> <div><div></div></div> <div><div></div></div> <div><div></div></div> <div><div></div></div> <div><div></div></div> <div><div></div></div> <div><div></div></div> <div><div></div></div> <div><div></div></div> <div><div></div></div> <div><div></div></div> <div><div></div></div> <div><div></div></div> <div><div></div></div> <div><div></div></div> <div><div></div></div> <div><div></div></div> <div><div></div></div> <div><div></div></div> <div><div></div></div> <div><div></div></div> <div><div></div></div> <div><div></div></div> <div><div></div></div> <div><div></div></div> <div><div></div></div> <div><div></div></div> <div><div></div></div> <div><div></div></div> <div><div></div></div> <div><div></div></div> <div><div></div></div> <div><div></div></div> <div><div></div></div> <div><div></div></div> <div><div></div></div> <div><div></div></div> <div><div></div></div> <div><div></div></div> <div><div></div></div> <div><div></div></div> <div><div></div></div> <div><div></div></div> <div><div></div></div> <div><div></div></div> <div><div></div></div> <div><div></div></div> <div><div></div></div> <div><div></div></div> <div><div></div></div> <div><div></div></div> <div><div></div></div> <div><div></div></div> <div><div></div></div> <div><div></div></div> <div><div></div></div> <div><div></div></div> <div><div></div></div> <div><div></div></div> <div><div></div></div> <div><div></div></div> <div><div></div></div> <div><div></div></div> <div><div></div></div> <div><div></div></div> <div><div></div></div> <div><div></div></div> <div><div></div></div> <div><div></div></div> <div><div></div></div> <div><div></div></div> <div><div></div></div> <div><div></div></div> <div><div></div></div> <div><div></div></div> <div><div></div></div> <div><div></div></div> <div><div></div></div> <div><div></div></div> <div><div></div></div> <div><div></div></div> <div><div></div></div> <div><div></div></div> <div><div></div></div> <div><div></div></div> <div><div></div></div> <div><div></div></div> <div><div></div></div> <div><div></div></div> <div><div></div></div> <div><div></div></div> <div><div></div></div> <div><div></div></div> <div><div></div></div> <div><div></div></div> <div><div></div></div> <div><div></div></div> <div><div></div></div> <div><div></div></div> <div><div></div></div> <div><div></div></div> <div><div></div></div> <div><div></div></div> <div><div></div></div> <div><div></div></div> <div><div></div></div> <div><div></div></div> <div><div></div></div> <div><div></div></div> <div><div></div></div> <div><div></div></div> <div><div></div></div> <div><div></div></div> <div><div></div></div> <div><div></div></div> <div><div></div></div> <div><div></div></div> <div><div></div></div> <div><div></div></div> <div><div></div></div> <div><div></div></div> <div><div></div></div> <div><div></div></div> <div><div></div></div> <div><div></div></div> <div><div></div></div> <div><div></div></div> <div><div></div></div> <div><div></div></div> <div><div></div></div> <div><div></div></div> <div><div></div></div> <div><div></div></div> <div><div></div></div> <div><div></div></div> <div><div></div></div> <div><div></div></div> <div><div></div></div> <div><div></div></div> <div><div></div></div> <div><div></div></div> <div><div></div></div> <div><div></div></div> <div><div></div></div> <div><div></div></div> <div><div></div></div> <div><div></div></div> <div><div></div></div> <div><div></div></div> <div><div></div></div> <div><div></div></div> <div><div></div></div> <div><div></div></div> <div><div></div></div> <div><div></div></div> <div><div></div></div> <div><div></div></div> <div><div></div></div> <div><div></div></div> <div><div></div></div> <div><div></div></div> <div><div></div></div> <div><div></div></div> <div><div></div></div> <div><div></div></div> <div><div></div></div> <div><div></div></div> <div><div></div></div> <div><div></div></div> <div><div></div></div> <div><div></div></div> <div><div></div></div> <div><div></div></div> <div><div></div></div> <div><div></div></div> <div><div></div></div> <div><div></div></div> <div><div></div></div> <div><div></div></div> <div><div></div></div> <div><div></div></div> <div><div></div></div> <div><div></div></div> <div><div></div></div> <div><div></div></div> <div><div></div></div> <div><div></div></div> <div><div></div></div> <div><div></div></div> <div><div></div></div> <div><div></div></div> <div><div></div></div> <div><div></div></div> <div><div></div></div> <div><div></div></div> <div><div></div></div> <div><div></div></div> <div><div></div></div> <div><div></div></div> <div><div></div></div> <div><div></div></div> <div><div></div></div> <div><div></div></div> <div><div></div></div> <div><div></div></div> <div><div></div></div> <div><div></div></div> <div><div></div></div> <div><div></div></div> <div><div></div></div> <div><div></div></div> <div><div></div></div> <div><div></div></div> <div><div></div></div> <div><div></div></div> <div><div></div></div> <div><div></div></div> <div><div></div></div> <div><div></div></div> <div><div></div></div> <div><div></div></div> <div><div></div></div> <div><div></div></div> <div><div></div></div> <div><div></div></div> <div><div></div></div> <div><div></div></div> <div><div></div></div> <div><div></div></div> <div><div></div></div> <div><div></div></div> <div><div></div></div> <div><div></div></div> <div><div></div></div> <div><div></div></div> <div><div></div></div> <div><div></div></div> <div><div></div></div> <div><div></div></div> <div><div></div></div> <div><div></div></div> <div><div></div></div> <div><div></div></div> <div><div></div></div> <div><div></div></div> <div><div></div></div> <div><div></div></div> <div><div></div></div> <div><div></div></div> <div><div></div></div> <div><div></div></div> <div><div></div></div> <div><div></div></div> <div><div></div></div> <div><div></div></div> <div><div></div></div> <div><div></div></div> <div><div></div></div> <div><div></div></div> <div><div></div></div> <div><div></div></div> <div><div></div></div> <div><div></div></div> <div><div></div></div> <div><div></div></div> <div><div></div></div> <div><div></div></div> <div><div></div></div> <div><div></div></div> <div><div></div></div> <div><div></div></div> <div><div></div></div> <div><div></div></div> <div><div></div></div> <div><div></div></div> <div><div></div></div> <div><div></div></div> <div><div></div></div> <div><div></div></div> <div><div></div></div> <div><div></div></div> <div><div></div></div> <div><div></div></div> <div><div></div></div> <div><div></div></div> <div><div></div></div> <div><div></div></div> <div><div></div></div> <div><div></div></div> <div><div></div></div> <div><div></div></div> <div><div></div></div> <div><div></div></div> <div><div></div></div> <div><div></div></div> <div><div></div></div> <div><div></div></div> <div><div></div></div> <div><div></div></div> <div><div></div></div> <div><div></div></div> <div><div></div></div> <div><div></div></div> <div><div></div></div> <div><div></div></div> <div><div></div></div> <div><div></div></div> <div><div></div></div> <div><div></div></div> <div><div></div></div> <div><div></div></div> <div><div></div></div> <div><div></div></div> <div><div></div></div> <div><div></div></div> <div><div></div></div> <div><div></div></div> <div><div></div></div> <div><div></div></div> <div><div></div></div> <div><div></div></div> <div><div></div></div> <div><div></div></div> <div><div></div></div> <div><div></div></div> <div><div></div></div> <div><div></div></div> <div><div></div></div> <div><div></div></div> <div><div></div></div> <div><div></div></div> <div><div></div></div> <div><div></div></div> <div><div></div></div> <div><div></div></div> <div><div></div></div> <div><div></div></div> <div><div></div></div> <div><div></div></div> <div><div></div></div> <div><div></div></div> <div><div></div></div> <div><div></div></div> <div><div></div></div> <div><div></div></div> <div><div></div></div> <div><div></div></div> <div><div></div></div> <div><div></div></div> <div><div></div></div> <div><div></div></div> <div><div></div></div> <div><div></div></div> <div><div></div></div> <div><div></div></div> <div><div></div></div> <div><div></div></div> <div><div></div></div> <div><div></div></div> <div><div></div></div> <div><div></div></div> <div><div></div></div> <div><div></div></div> <div><div></div></div> <div><div></div></div> <div><div></div></div> <div><div></div></div> <div><div></div></div> <div><div></div></div> <div><div></div></div> <div><div></div></div> <div><div></div></div> <div><div></div></div> <div><div></div></div> <div><div></div></div>
---	--	--------------------	--

10

9

8

7

6

5

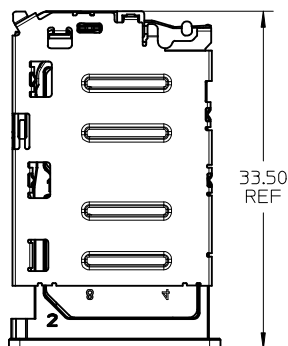
4

3

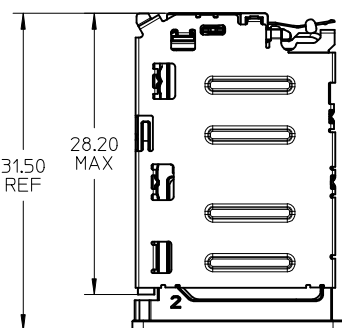
2

1

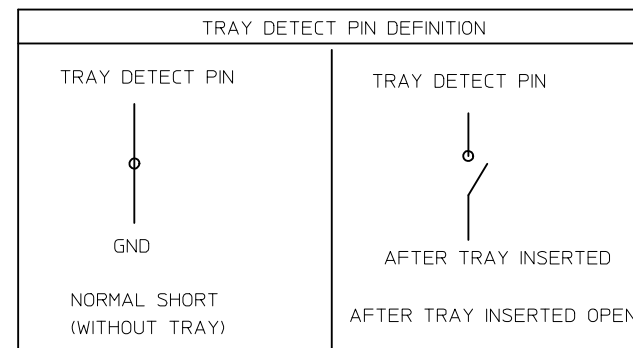
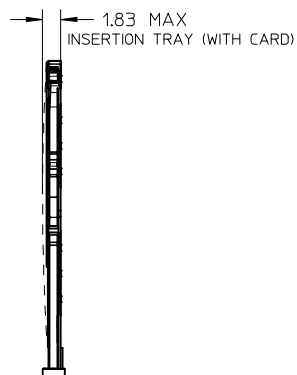
SIM CONNECTOR FRAME AND TRAY



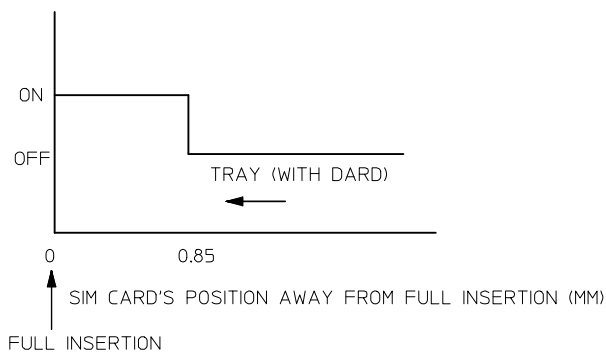
TRAY EJECTED POSITION



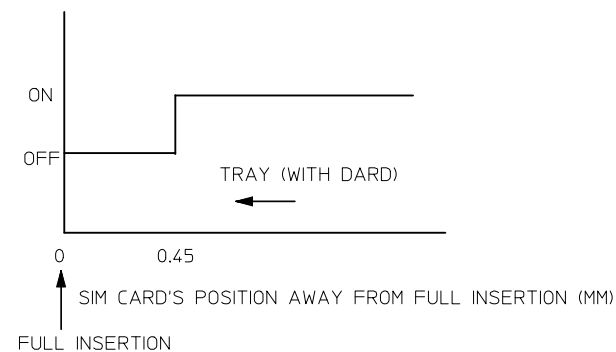
TRAY INSERTION POSITION



SIGNAL PIN



DETECT SWITCH PIN



SEE SHEET 1 EC NO: S2015-1182 DRWN: JZENG CHKD: JTAN02 APPR: KHLIM	DESCRIPTION REV 12	QUALITY SYMBOLS <div><div><div><div></div></div></div><div><div><div></div></div></div><div><div><div></div></div></div></div> <div><div><div></div></div></div> <div><div><div></div></div></div>	GENERAL TOLERANCES (UNLESS SPECIFIED)		DIMENSION STYLE MM ONLY		SCALE	DESIGN UNITS METRIC	THIRD ANGLE PROJECTION						
				mm	INCH	DRAWN BY JZENG	DATE 2014/07/01	TITLE DUAL SIM FRAME CONNECTOR 1.43H							
			4 PLACES	± ---	± ---	CHECKED BY JTAN02	DATE 2014/07/01								
			3 PLACES	± ---	± ---	APPROVED BY		DATE		<div>molex</div>					
			2 PLACES	± 0.20	± ---										
			1 PLACE	± 0.20	± ---										
			0 PLACE	± ---	± ---	MATERIAL NO. 1510312001		DOCUMENT NO. SD-151031-0001							SHEET NO. 3 OF 5
DRAFT WHERE APPLICABLE MUST REMAIN WITHIN DIMENSIONS			SIZE A3		THIS DRAWING CONTAINS INFORMATION THAT IS PROPRIETARY TO MOLEX INCORPORATED AND SHOULD NOT BE USED WITHOUT WRITTEN PERMISSION										

9

8

7

6

5

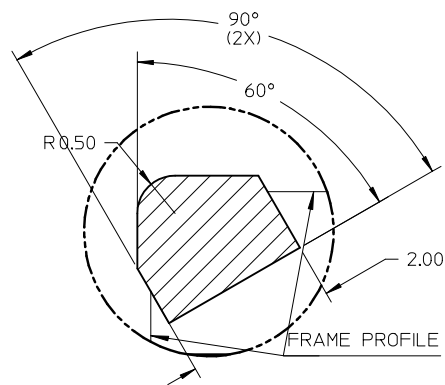
4

3

2

1

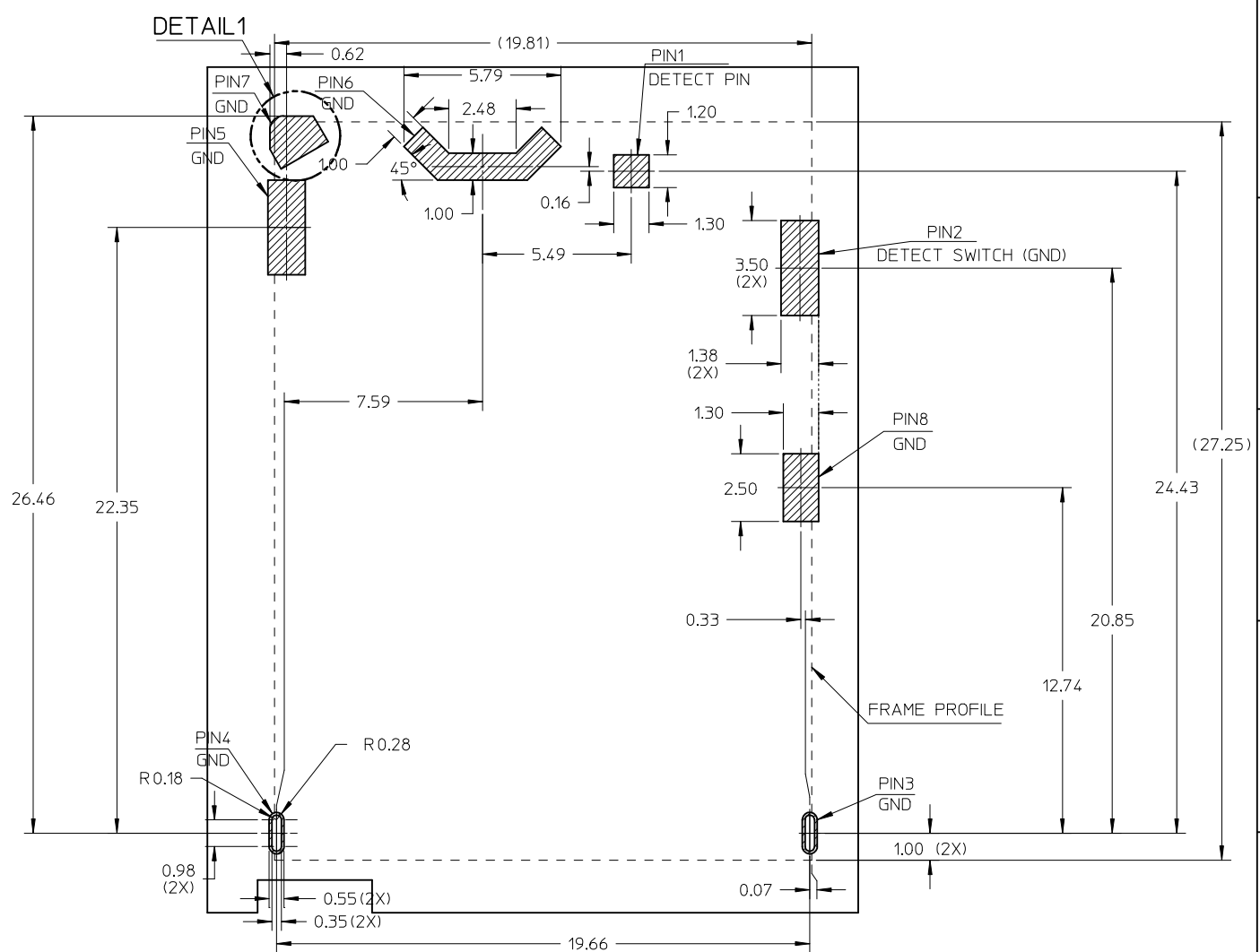
F 151031 FRAME SOLDERING AREA: 





DETAIL1

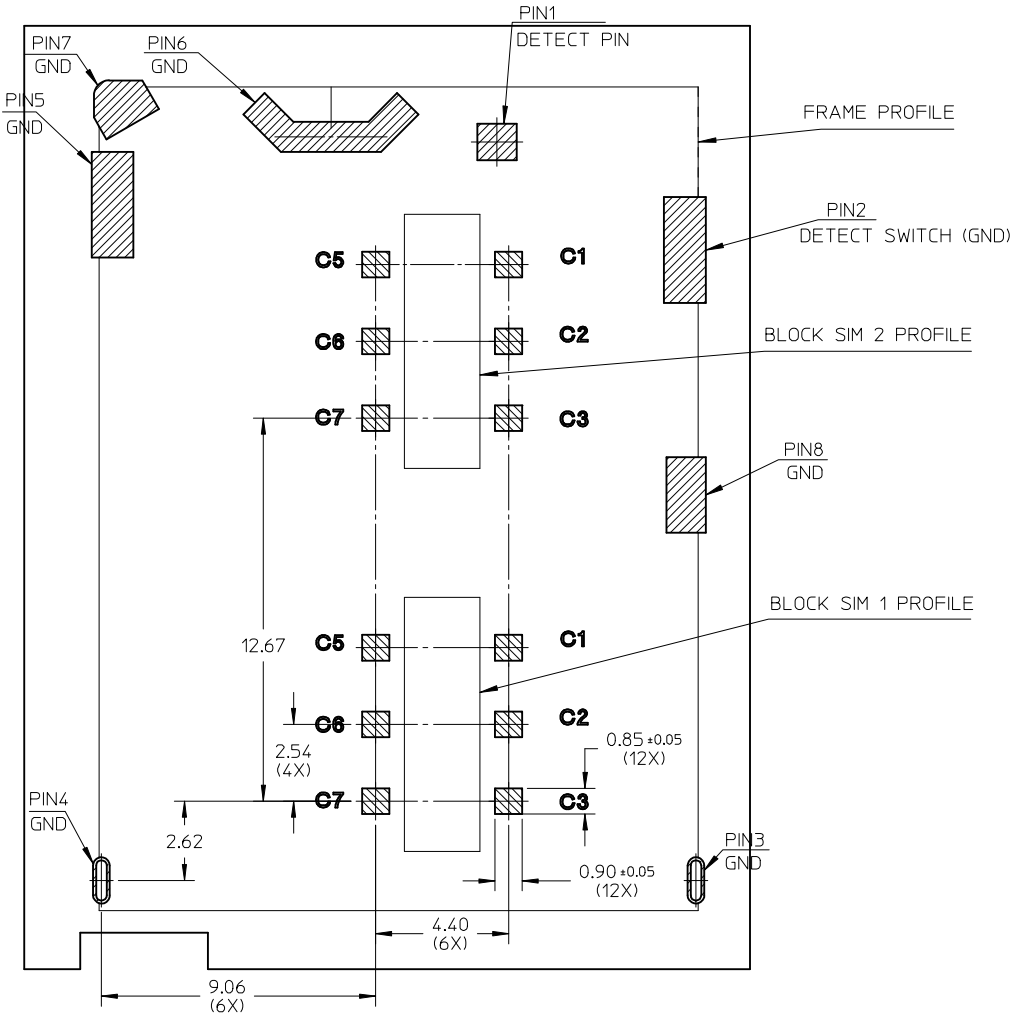
THIS DESIGN IS BASED ON DESIGN OBJECTIVES AND IS STRICTLY TENTATIVE. IT MAY CHANGE BASED ON RESULTS OF ADDITIONAL DESIGN REVIEWS & VERIFICATIONS.

RECOMMENDED PCB LAYOUT: TOLERANCE ±0.05
RECOMMENDED PCB THICKNESS: 1.00MM
RECOMMENDED STENCIL THICKNESS: 0.10MM



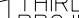
SEE SHEET 1 EC NO: S2015-1182 DRWN: JZENG CHKD: JTAN02 APPR: KHLIM	2015/06/29 2015/07/07 2015/07/22	DESCRIPTION REV	QUALITY SYMBOLS <div>F_A=0</div> <div>F_G=0</div> <div>F_P=0</div>	GENERAL TOLERANCES (UNLESS SPECIFIED)			DIMENSION STYLE MM ONLY		SCALE NTS	DESIGN UNITS METRIC	THIRD ANGLE PROJECTION				
					mm	INCH	DRAWN BY JZENG	DATE 2014/07/01	TITLE DUAL SIM FRAME CONNECTOR 1.43H						
				4 PLACES	± ---	± ---	CHECKED BY JTAN02	DATE 2014/07/01							
				3 PLACES	± ---	± ---	APPROVED BY DATE		molex						
				2 PLACES	± 0.20	± ---									
				1 PLACE	± 0.20	± ---									
				0 PLACE	± ---	± ---	MATERIAL NO. 1510312001		DOCUMENT NO. SD-151031-0001		SHEET NO. 4 OF 5				
				ANGULAR ± 3 °											
				DRAFT WHERE APPLICABLE MUST REMAIN WITHIN DIMENSIONS			THIS DRAWING CONTAINS INFORMATION THAT IS PROPRIETARY TO MOLEX INCORPORATED AND SHOULD NOT BE USED WITHOUT WRITTEN PERMISSION								

151031 FRAME SOLDERING AREA: 
151130 BLOCK SIM SOLDERING AREA: 



THIS DESIGN IS BASED ON DESIGN OBJECTIVES
AND IS STRICTLY TENTATIVE. IT MAY CHANGE
BASED ON RESULTS OF ADDITIONAL DESIGN
REVIEWS & VERIFICATIONS.

RECOMMENDED PCB LAYOUT: TOLERANCE ± 0.05
RECOMMENDED PCB THICKNESS: 1.0MM
RECOMMENDED STENCIL THICKNESS: 0.10MM

SEE SHEET 1 EC NO: S2015-1182 DRWN: JZENG CHKD: JTAN02 APPR: KHLIM	2015/06/29 2015/07/07 2015/07/12	DESCRIPTION	QUALITY SYMBOLS $F_A=0$ $F_G=0$ $F_P=0$	GENERAL TOLERANCES (UNLESS SPECIFIED)		DIMENSION STYLE MM ONLY		SCALE NTS	DESIGN UNITS METRIC	 THIRD ANGLE PROJECTION
				4 PLACES 3 PLACES 2 PLACES 1 PLACE 0 PLACE	mm	INCH	DRAWN BY JZENG	DATE 2014/07/01	TITLE DUAL SIM FRAME CONNECTOR 1.43H	
					± --- ± --- ± 0.20 ± 0.20 ± ---	± --- ± --- ± --- ± --- ± ---	CHECKED BY JTAN02	DATE 2014/07/01		
							APPROVED BY DATE			
							ANGULAR ± 3 °			
							DRAFT WHERE APPLICABLE MUST REMAIN WITHIN DIMENSIONS			
MATERIAL NO. 1510312001		DOCUMENT NO. SD-151031-0001		SHEET NO. 5 OF 5						
12	REV	THIS DRAWING CONTAINS INFORMATION THAT IS PROPRIETARY TO MOLEX INCORPORATED AND SHOULD NOT BE USED WITHOUT WRITTEN PERMISSION								