



Chipsmall Limited consists of a professional team with an average of over 10 year of expertise in the distribution of electronic components. Based in Hongkong, we have already established firm and mutual-benefit business relationships with customers from,Europe,America and south Asia,supplying obsolete and hard-to-find components to meet their specific needs.

With the principle of “Quality Parts,Customers Priority,Honest Operation,and Considerate Service”,our business mainly focus on the distribution of electronic components. Line cards we deal with include Microchip,ALPS,ROHM,Xilinx,Pulse,ON,Everlight and Freescale. Main products comprise IC,Modules,Potentiometer,IC Socket,Relay,Connector.Our parts cover such applications as commercial,industrial, and automotives areas.

We are looking forward to setting up business relationship with you and hope to provide you with the best service and solution. Let us make a better world for our industry!



Contact us

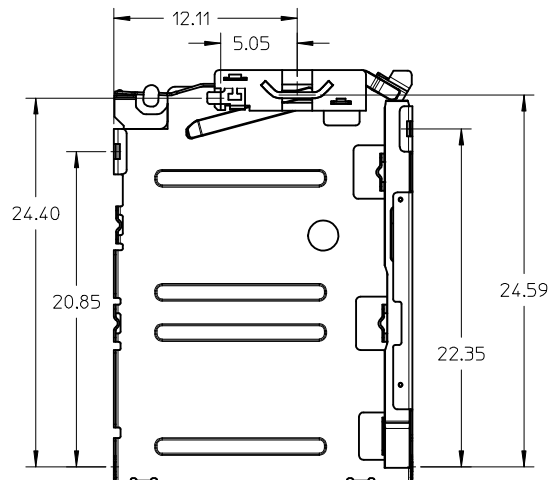
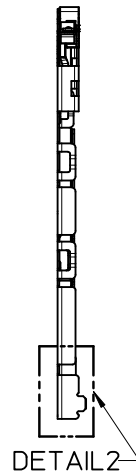
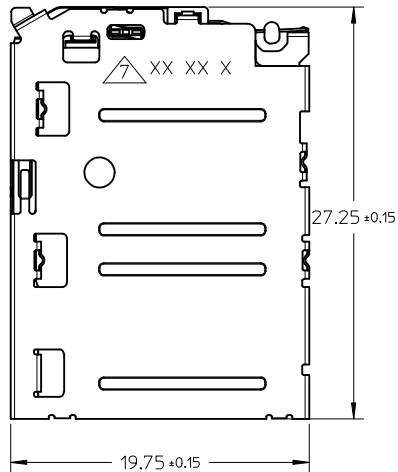
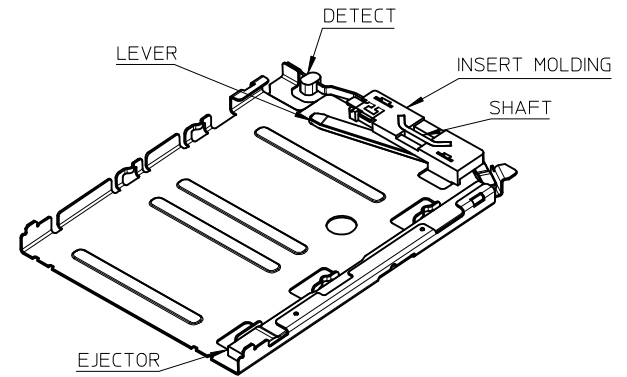
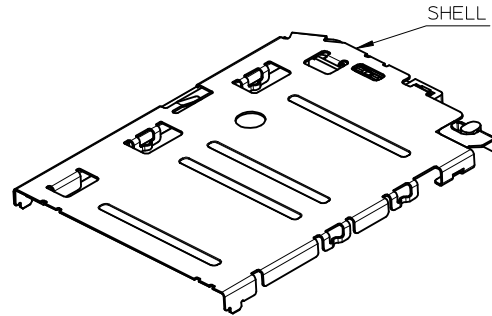
Tel: +86-755-8981 8866 Fax: +86-755-8427 6832

Email & Skype: info@chipsmall.com Web: www.chipsmall.com

Address: A1208, Overseas Decoration Building, #122 Zhenhua RD., Futian, Shenzhen, China



THIS DESIGN IS BASED ON DESIGN OBJECTIVES AND IS STRICTLY TENTATIVE. IT MAY CHANGE BASED ON RESULTS OF ADDITIONAL DESIGN REVIEWS & VERIFICATIONS.

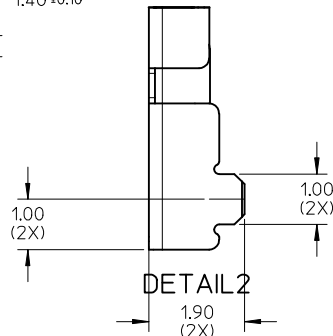
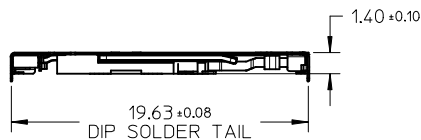


NOTES:

1. MATERIALS:
INSERT MOLD HOUSING: LCP, UL94V-0;
LEVER, SHAFT, EJECTOR, SHELL: STAINLESS STEEL;
DETECT SPRING: COPPER ALLOY;
2. FINISHES:
DETECT SPRING:
1.27um MIN. NICKEL UNDERPLATING OVERALL;
0.127um MIN. GOLD PLATING ON CONTACT AREA;
1.27 um MIN. TIN PLATING ON SOLDERING TAIL;
SHELL:
1.27um MIN NICKEL UNDERPLATING OVERALL;
0.025um MIN GOLD PLATING ON CONTACT AREA AND SOLDERING AREA;
SHAFT: 1.27um MIN TIN ON SOLDERING TAIL;
3. PRODUCT SPECIFICATION: PS-151031-0001;
4. PACKAGING SPECIFICATION: PK-151031-0002; PK-151032-0001
5. SOLDER TAIL COPLANARITY: 0.10 MM MAX BEFORE REFLOW
6. THIS PART IS A FRAME ONLY, IT SHOULD BE USED TOGETHER WITH 0.35MM BLOCK SIM 151032 FOR AN ENTIRE SIM POP OUT SYSTEM;

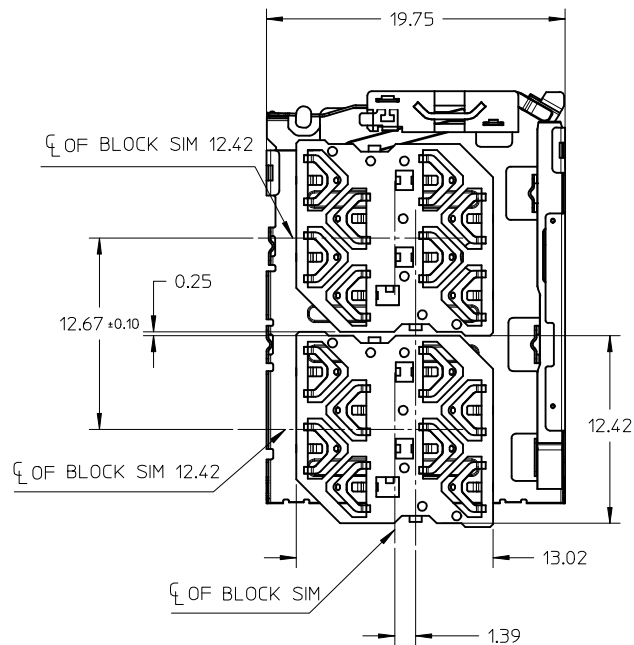
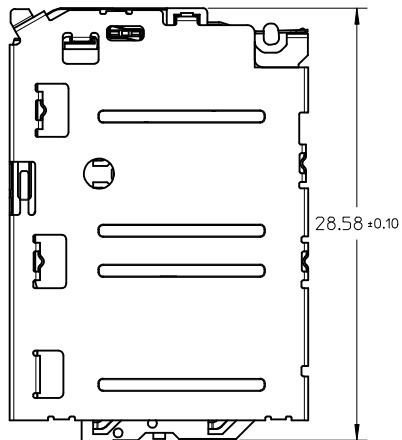
DATE CODE PRINTED: XX XX X

DAY
WEEK
YEAR

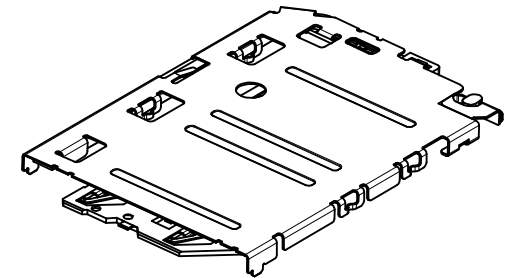


UPDATED DRAWING EC NO: S2015-0559 DRWN: JZENG CHKD: JANO2 APPR: KHL IM	DESCRIPTION QUALITY SYMBOLS	GENERAL TOLERANCES (UNLESS SPECIFIED)	mm		INCH		DRAWN BY		DATE		TITLE	DUAL MICRO SIM FRAME 1.40H	
			4 PLACES	± ---	± ---	JZENG	2013/12/13						
			3 PLACES	± ---	± ---	CHECKED BY	DATE	APPROVED BY	DATE	DOCUMENT NO.	SHEET NO.		
			2 PLACES	± 0.20	± ---	KHL IM	2014/01/27					SD-151031-0002	1 OF 5
			1 PLACE	± 0.20	± ---								
			0 PLACE	± ---	± ---	MATERIAL NO.		SD-151031-0002					
			ANGULAR ± 3 °		1510313001								
DRAFT WHERE APPLICABLE MUST REMAIN WITHIN DIMENSIONS		SIZE A3		THIS DRAWING CONTAINS INFORMATION THAT IS PROPRIETARY TO MOLEX INCORPORATED AND SHOULD NOT BE USED WITHOUT WRITTEN PERMISSION									

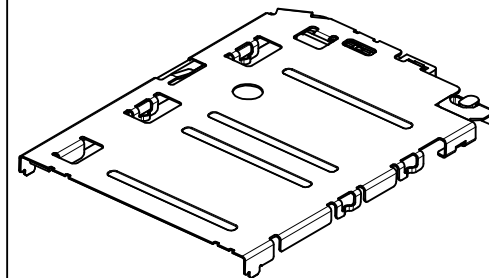
SIM CONNECTOR
(WITH 151032 BLOCK SIM CONNECTOR)



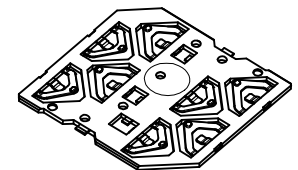
SIM CONNECTOR BOM



FRAME + BLOCK SIM



151031 SERIES



151032 SERIES

THIS DESIGN IS BASED ON DESIGN OBJECTIVES
AND IS STRICTLY TENTATIVE. IT MAY CHANGE
BASED ON RESULTS OF ADDITIONAL DESIGN
REVIEWS & VERIFICATIONS.

REV	DESCRIPTION
4	SEE SHEET1 EC NO: S2015-0559 2014/11/26 DRWN: JZENG CHKD: JIAN02 APPR: KHL IM 2014/12/22 2014/12/24

QUALITY SYMBOLS
$F_A=0$
$F_G=0$
$F_P=0$

GENERAL TOLERANCES (UNLESS SPECIFIED)		
	mm	INCH
4 PLACES	± ---	± ---
3 PLACES	± ---	± ---
2 PLACES	± 0.20	± ---
1 PLACE	± 0.20	± ---
0 PLACE	± ---	± ---
ANGULAR ± 3 °		
DRAFT WHERE APPLICABLE MUST REMAIN WITHIN DIMENSIONS		

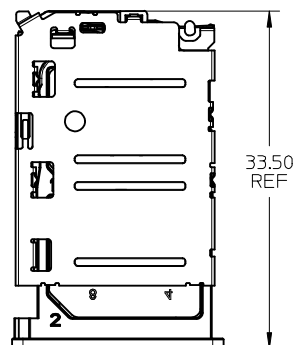
DIMENSION STYLE MM ONLY	
DRAWN BY	DATE
JZENG	2013/12/13
CHECKED BY	DATE
APPROVED BY	DATE
KHL IM	2014/01/27
MATERIAL NO.	
1510313001	
SIZE	
A3	

SCALE	DESIGN UNITS	THIRD ANGLE PROJECTION
NTS	METRIC	
TITLE		
DUAL MICRO SIM FRAME 1.40H		
DOCUMENT NO.		
SD-151031-0002		
SHEET NO.		
2 OF 5		

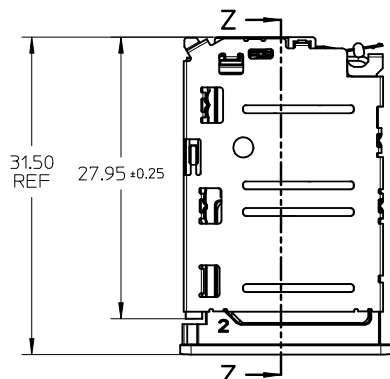
molex

THIS DRAWING CONTAINS INFORMATION THAT IS PROPRIETARY TO MOLEX
INCORPORATED AND SHOULD NOT BE USED WITHOUT WRITTEN PERMISSION

SIM CONNECTOR FRAME AND TRAY

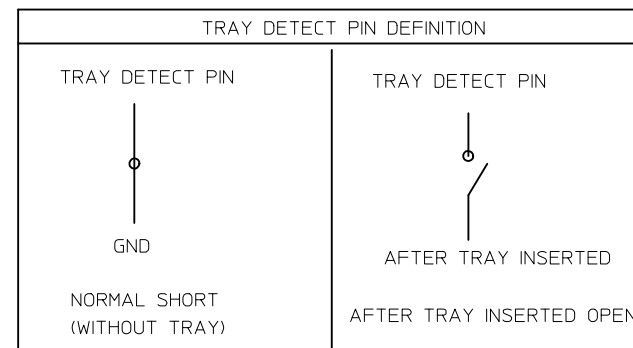
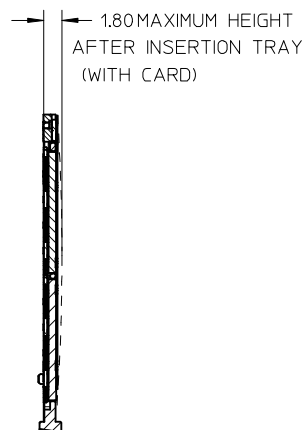


TRAY EJECTED POSITION

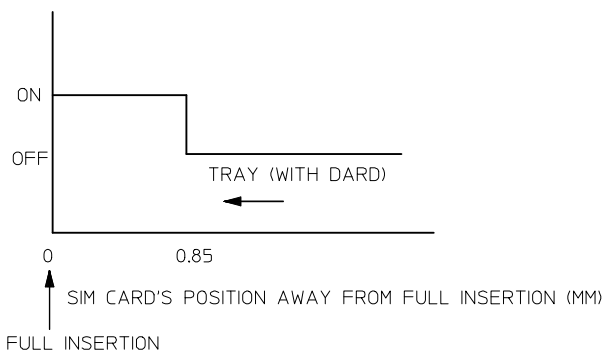


TRAY INSERTION POSITION

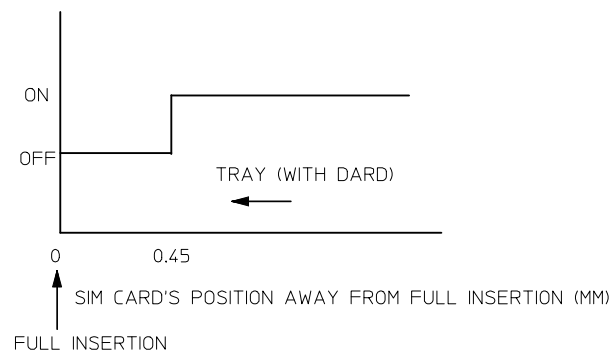
SECTION Z-Z



SIGNAL PIN

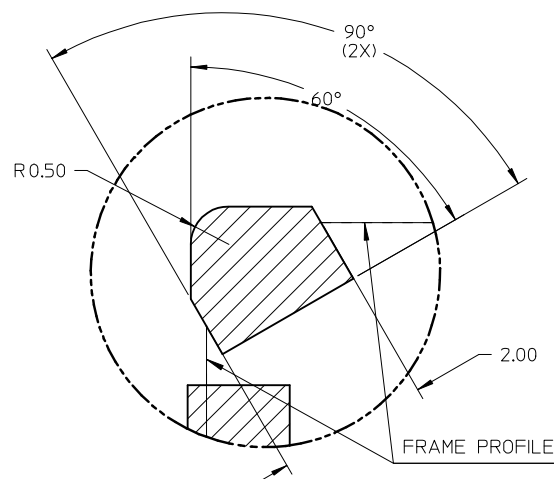


DETECT SWITCH PIN



SEE SHEET 1 EC NO: S2015-0559 DRWN: JZENG CHKD: JIAN02 APPR: KHLIM	DESCRIPTION REV 4	QUALITY SYMBOLS <div><div><div></div></div><div><div></div></div><div><div></div></div></div>	GENERAL TOLERANCES (UNLESS SPECIFIED)		DIMENSION STYLE MM ONLY		SCALE	DESIGN UNITS METRIC	THIRD ANGLE PROJECTION		
				mm	INCH	DRAWN BY JZENG	DATE 2013/12/13	TITLE DUAL MICRO SIM FRAME 1.40H			
			4 PLACES	± ---	± ---	CHECKED BY	DATE				
			3 PLACES	± ---	± ---	APPROVED BY KHLIM	DATE 2014/01/27	molex	DOCUMENT NO. SD-151031-0002	SHEET NO. 3 OF 5	
			2 PLACES	± 0.20	± ---	MATERIAL NO. 1510313001					
			1 PLACE	± 0.20	± ---	DRAFT WHERE APPLICABLE MUST REMAIN WITHIN DIMENSIONS					
			0 PLACE	± ---	± ---	SIZE A3		THIS DRAWING CONTAINS INFORMATION THAT IS PROPRIETARY TO MOLEX INCORPORATED AND SHOULD NOT BE USED WITHOUT WRITTEN PERMISSION			

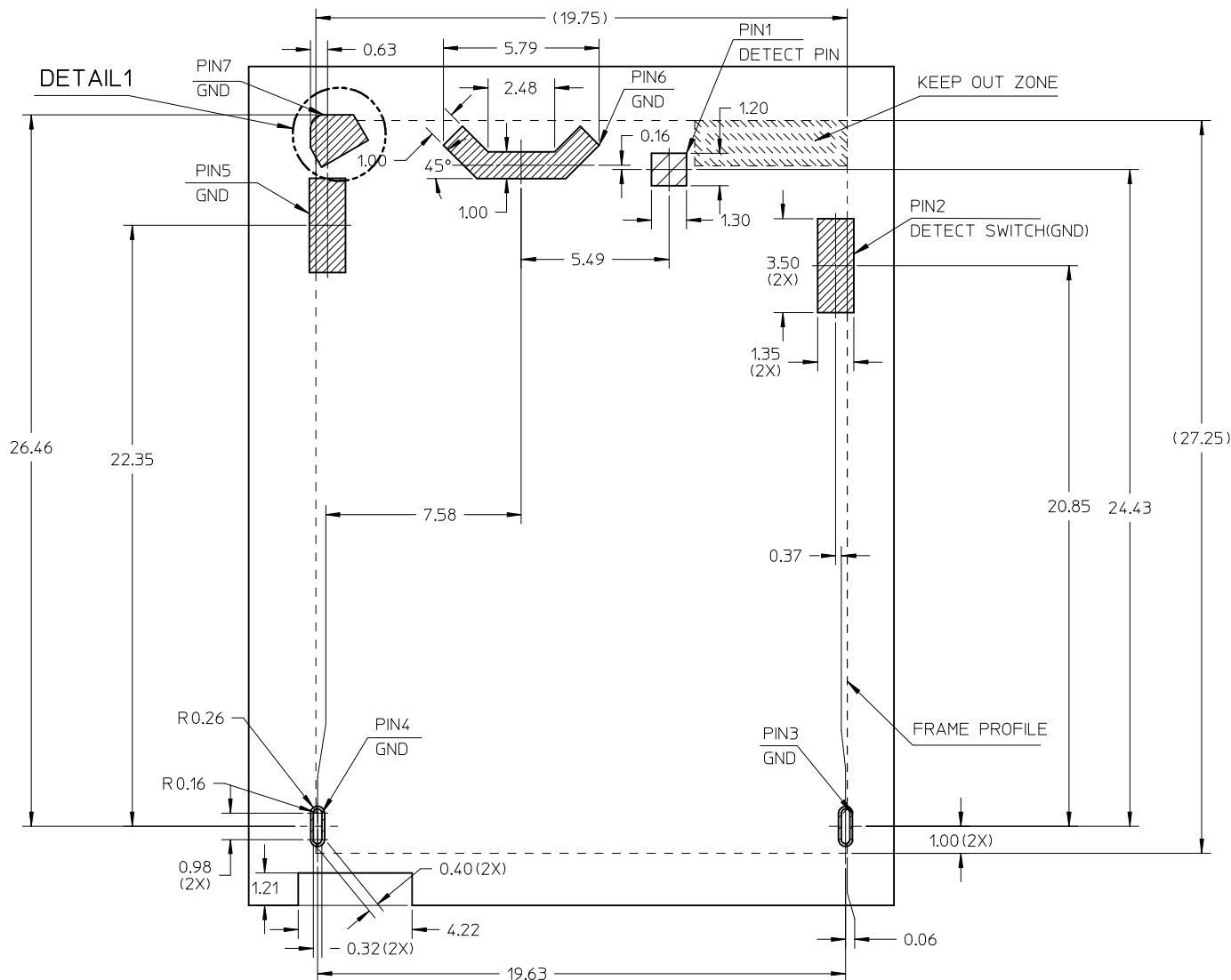
151031 FRAME SOLDERING AREA:
KEEP OUT ZONE:



DETAIL1



THIS DESIGN IS BASED ON DESIGN OBJECTIVES
AND IS STRICTLY TENTATIVE. IT MAY CHANGE
BASED ON RESULTS OF ADDITIONAL DESIGN
REVIEWS & VERIFICATIONS.

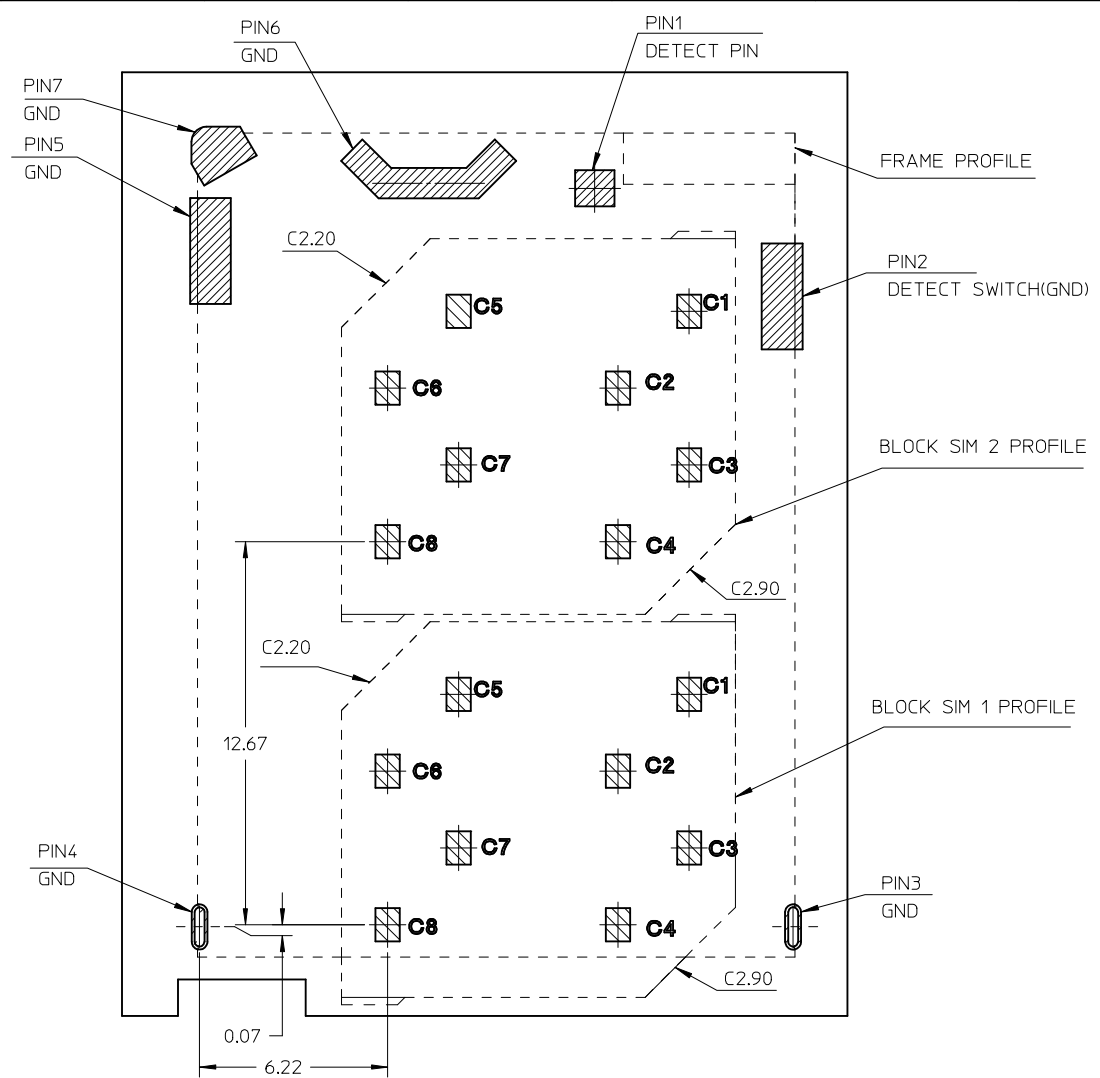
RECOMMENDED PCB LAYOUT: TOLERANCE ± 0.05
RECOMMENDED PCB THICKNESS: 1.00MM
RECOMMENDED STENCIL THICKNESS: 0.10MM



SEE SHEET 1 EC NO: S2015-0559 DRWN: JZENG CHKD: JIAN02 APPR: KHL IM	DESCRIPTION 2014/11/26 2014/12/22 2014/12/24	QUALITY SYMBOLS <div><div><div><div></div></div></div><div><div><div></div></div></div><div><div><div></div></div></div></div>	GENERAL TOLERANCES (UNLESS SPECIFIED)		DIMENSION STYLE MM ONLY		SCALE NTS	DESIGN UNITS METRIC	THIRD ANGLE PROJECTION				
			4 PLACES 3 PLACES 2 PLACES 1 PLACE 0 PLACE	mm	INCH	DRAWN BY JZENG	DATE 2013/12/13	TITLE DUAL MICRO SIM FRAME 1.40H					
						CHECKED BY	DATE						
				ANGULAR $\pm 3^\circ$		APPROVED BY KHL IM	DATE 2014/01/27	molex					
				DRAFT WHERE APPLICABLE MUST REMAIN WITHIN DIMENSIONS		MATERIAL NO. 1510313001	DOCUMENT NO. SD-151031-0002						
						SIZE A3	THIS DRAWING CONTAINS INFORMATION THAT IS PROPRIETARY TO MOLEX INCORPORATED AND SHOULD NOT BE USED WITHOUT WRITTEN PERMISSION						
4	REV												



10 9 8 7 6 5 4 3 2 1

151031 FRAME SOLDERING AREA: 
151032 BLOCK SIM SOLDERING AREA: 



THIS DESIGN IS BASED ON DESIGN OBJECTIVES AND IS STRICTLY TENTATIVE. IT MAY CHANGE BASED ON RESULTS OF ADDITIONAL DESIGN REVIEWS & VERIFICATIONS.

RECOMMENDED PCB LAYOUT: TOLERANCE ±0.05
RECOMMENDED PCB THICKNESS: 1.00MM
RECOMMENDED STENCIL THICKNESS: 0.10MM

SEE SHEET 1 EC NO: S2015-0559 DRWN: JZENG CHKD: JIAN02 APPR: KHLIM	DESCRIPTION 2014/11/26 2014/12/22 2014/12/24	QUALITY SYMBOLS <div>F=0</div> <div>F=0</div> <div>F=0</div>	GENERAL TOLERANCES (UNLESS SPECIFIED)			DIMENSION STYLE MM ONLY		SCALE NTS	DESIGN UNITS METRIC	 THIRD ANGLE PROJECTION		
				mm	INCH	DRAWN BY JZENG	DATE 2013/12/13	TITLE DUAL MICRO SIM FRAME 1.40H				
			4 PLACES ± ---	± ---	CHECKED BY	DATE						
			3 PLACES ± ---	± ---	APPROVED BY KHLIM		DATE 2014/01/27					
			2 PLACES ± 0.20	± ---	MATERIAL NO. 1510313001		DOCUMENT NO. SD-151031-0002					
			1 PLACE ± 0.20	± ---	DRAFT WHERE APPLICABLE MUST REMAIN WITHIN DIMENSIONS		SIZE A3		THIS DRAWING CONTAINS INFORMATION THAT IS PROPRIETARY TO MOLEX INCORPORATED AND SHOULD NOT BE USED WITHOUT WRITTEN PERMISSION			
			0 PLACE ± ---	± ---								
REV												

9 8 7 6 5 4 3 2 1