



Chipsmall Limited consists of a professional team with an average of over 10 year of expertise in the distribution of electronic components. Based in Hongkong, we have already established firm and mutual-benefit business relationships with customers from,Europe,America and south Asia,supplying obsolete and hard-to-find components to meet their specific needs.

With the principle of “Quality Parts,Customers Priority,Honest Operation,and Considerate Service”,our business mainly focus on the distribution of electronic components. Line cards we deal with include Microchip,ALPS,ROHM,Xilinx,Pulse,ON,Everlight and Freescale. Main products comprise IC,Modules,Potentiometer,IC Socket,Relay,Connector.Our parts cover such applications as commercial,industrial, and automotives areas.

We are looking forward to setting up business relationship with you and hope to provide you with the best service and solution. Let us make a better world for our industry!



Contact us

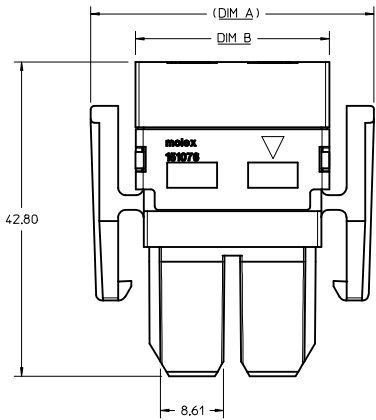
Tel: +86-755-8981 8866 Fax: +86-755-8427 6832

Email & Skype: info@chipsmall.com Web: www.chipsmall.com

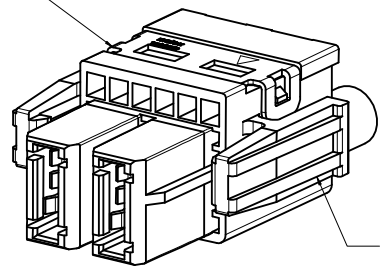
Address: A1208, Overseas Decoration Building, #122 Zhenhua RD., Futian, Shenzhen, China



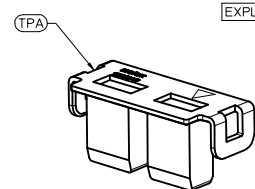
CKT SIZE	PART NUMBER			DIM A	DIM B	DIM C
	WTB MAIN HOUSING	TPA	6 AWG POWER TERMINAL			
2	151034-0012	151076-0012	46819-0013 (2X)	38.60	26.40	24.20
3	151034-0013	151076-0013	46819-0013 (3X)	49.60	37.40	35.20
4	151034-0014	151076-0014	46819-0013 (4X)	60.60	48.40	46.20
5	151034-0015	151076-0015	46819-0013 (5X)	71.60	59.40	57.20
6	151034-0016	151076-0016	46819-0013 (6X)	82.60	70.40	68.20



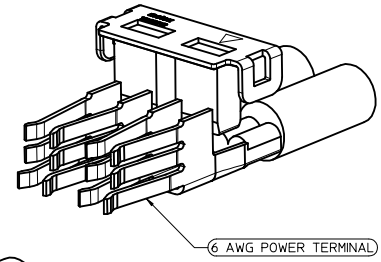
TPA
PART NO: 151076-001*



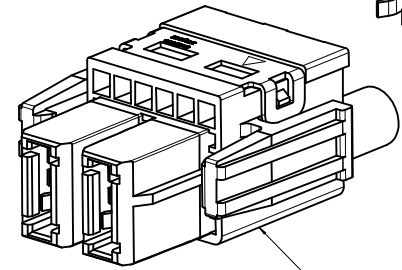
WTB MAIN HOUSING
PART NO: 151034-001*



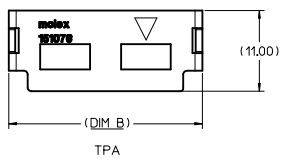
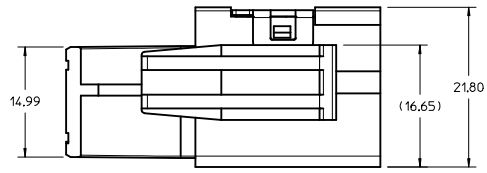
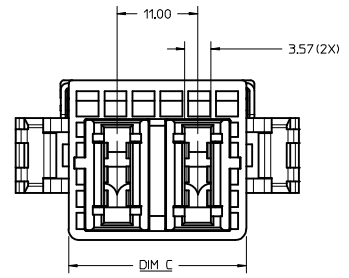
EXPLODED VIEW OF WIRE HARNESS



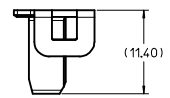
6 AWG POWER TERMINAL



WTB MAIN HOUSING



TPA



NOTES:

- MATERIAL:
MAIN HOUSING AND TPA: PBT
CRIMP TERMINAL: COPPER ALLOY
- FINISHES: TIN OVER NICKEL WITH SELECTIVE GOLD
- PRODUCT SPEC: PS-151053-0000
- PACKAGING:
WTB MAIN HOUSING: PK-151034-0001 IN TRAY
TPA: PK-151076-0001 IN BAG
- TO BE USED WITH CRIMP PART NUMBER: 46819-0013
MOLEX DRAWING SD-46819-001, CABLE ASSEMBLIES: TBA.
- PARTS ARE RoHS COMPLIANT.
- TPA MUST BE USED WITH HOUSING.
- DO NOT INSERT TPA INTO MAIN HOUSING UNTIL THE CRIMP WITH WIRES HAD BEEN INSERTED.
- FOR WIRE SIZE: 6AWG.
- TPA, HOUSING AND CRIMP ARE SOLD SEPERATELY.

ADD PK SPEC IEC NO: S2016-0905 2016/03/31 DRAWN: CGOH 2016/04/07 CHKD: EANG APPROV: KHLIM 2016/04/08 DESCRIPTION	QUALITY SYMBOLS ▽=0 ▽=0 ▽=0		GENERAL TOLERANCES (UNLESS SPECIFIED) mm INCH 4 PLACES ±--- ±--- 3 PLACES ±--- ±--- 2 PLACES ±0.25 ±--- 1 PLACE ±--- ±--- 0 PLACE ±--- ±---		DIMENSION STYLE MM ONLY DRAWN BY DATE CGOH 2014/04/23 CHECKED BY DATE EANG 2014/11/24 APPROVED BY DATE KHLIM 2014/11/24		SCALE 3:1 DESIGN UNITS METRIC THIRD ANGLE PROJECTION	
	MATERIAL NO. SEE TABLE DRAFT WHERE APPLICABLE MUST REMAIN WITHIN DIMENSIONS				DOCUMENT NO. SD-151034-0001		SHEET NO. 1 OF 1	
	GUARDIAN CRIMP RECEPTACLE HOUSING 2 - 6 CKTS molex							
	THIS DRAWING CONTAINS INFORMATION THAT IS PROPRIETARY TO MOLEX INCORPORATED AND SHOULD NOT BE USED WITHOUT WRITTEN PERMISSION							