



Chipsmall Limited consists of a professional team with an average of over 10 year of expertise in the distribution of electronic components. Based in Hongkong, we have already established firm and mutual-benefit business relationships with customers from,Europe,America and south Asia,supplying obsolete and hard-to-find components to meet their specific needs.

With the principle of “Quality Parts,Customers Priority,Honest Operation,and Considerate Service”,our business mainly focus on the distribution of electronic components. Line cards we deal with include Microchip,ALPS,ROHM,Xilinx,Pulse,ON,Everlight and Freescale. Main products comprise IC,Modules,Potentiometer,IC Socket,Relay,Connector.Our parts cover such applications as commercial,industrial, and automotives areas.

We are looking forward to setting up business relationship with you and hope to provide you with the best service and solution. Let us make a better world for our industry!



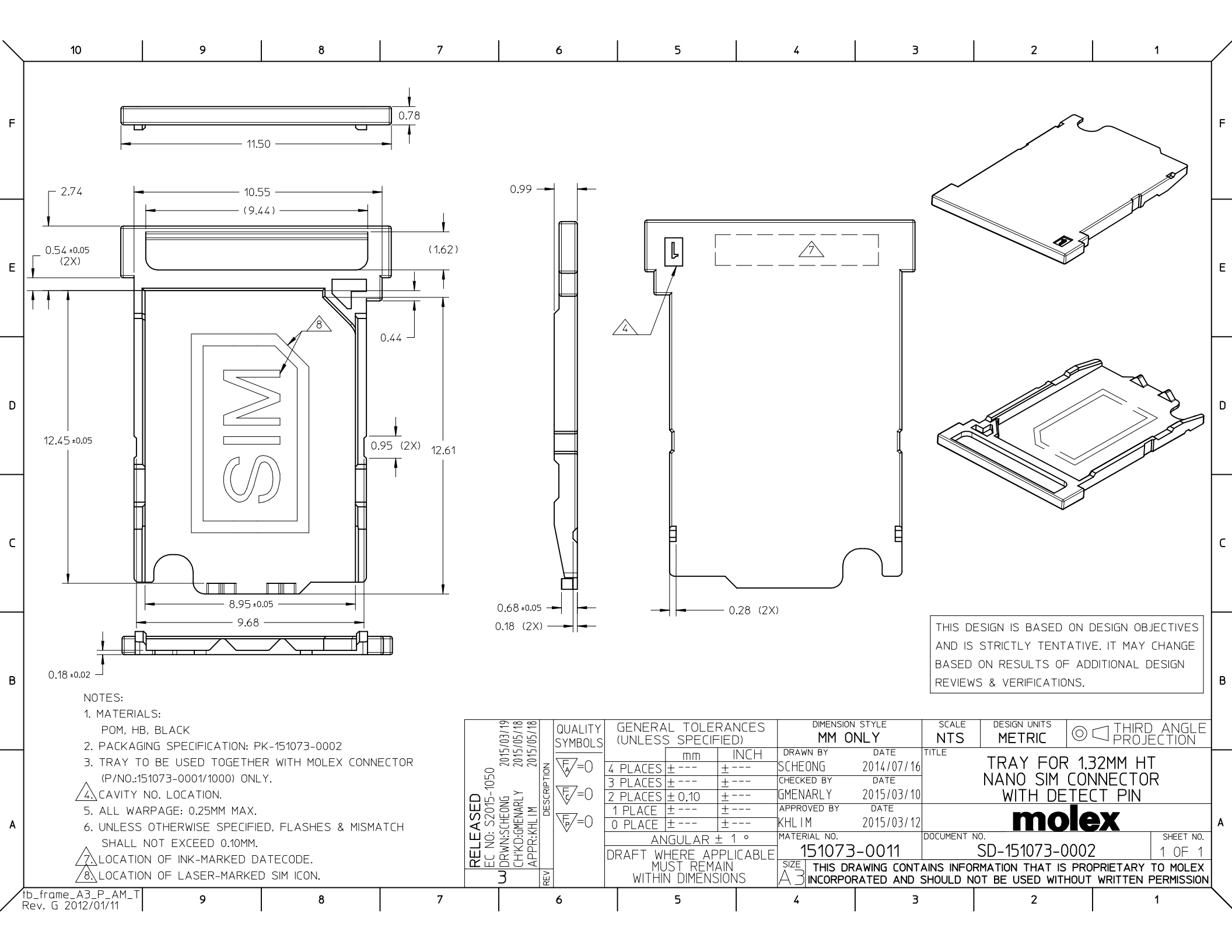
Contact us

Tel: +86-755-8981 8866 Fax: +86-755-8427 6832

Email & Skype: info@chipsmall.com Web: www.chipsmall.com

Address: A1208, Overseas Decoration Building, #122 Zhenhua RD., Futian, Shenzhen, China





NOTES:

1. MATERIALS:

POM, HB, BLACK

2. PACKAGING SPECIFICATION: PK-151073-0002

3. TRAY TO BE USED TOGETHER WITH MOLEX CONNECTOR (P/NO.:151073-0001/1000) ONLY.

4. CAVITY NO. LOCATION.

5. ALL WARPAGE: 0.25MM MAX.

6. UNLESS OTHERWISE SPECIFIED, FLASHES & MISMATCH SHALL NOT EXCEED 0.10MM.

7. LOCATION OF INK-MARKED DATECODE.

8. LOCATION OF LASER-MARKED SIM ICON.

RELEASED EC NO: S2015-1050 DRWN:SCHEONG CHKD:GMENARLY APPR:KHLIM	DESCRIPTION 2015/03/19 2015/05/18 2015/05/18	QUALITY SYMBOLS <div>FA=0</div> <div>FG=0</div> <div>FP=0</div>	GENERAL TOLERANCES (UNLESS SPECIFIED)		DIMENSION STYLE MM ONLY		SCALE NTS	DESIGN UNITS METRIC	THIRD ANGLE PROJECTION			
			4 PLACES 3 PLACES 2 PLACES 1 PLACE 0 PLACE	mm	INCH	DRAWN BY SCHEONG	DATE 2014/07/16	TITLE TRAY FOR 1.32MM HT NANO SIM CONNECTOR WITH DETECT PIN				
						CHECKED BY GMENARLY	DATE 2015/03/10					
						APPROVED BY KHLIM	DATE 2015/03/12					
				ANGULAR ± 1 °		MATERIAL NO. 151073-0011		DOCUMENT NO. SD-151073-0002				SHEET NO. 1 OF 1
				DRAFT WHERE APPLICABLE MUST REMAIN WITHIN DIMENSIONS		SIZE A3		THIS DRAWING CONTAINS INFORMATION THAT IS PROPRIETARY TO MOLEX INCORPORATED AND SHOULD NOT BE USED WITHOUT WRITTEN PERMISSION				

10

9

8

7

6

5

4

3

2

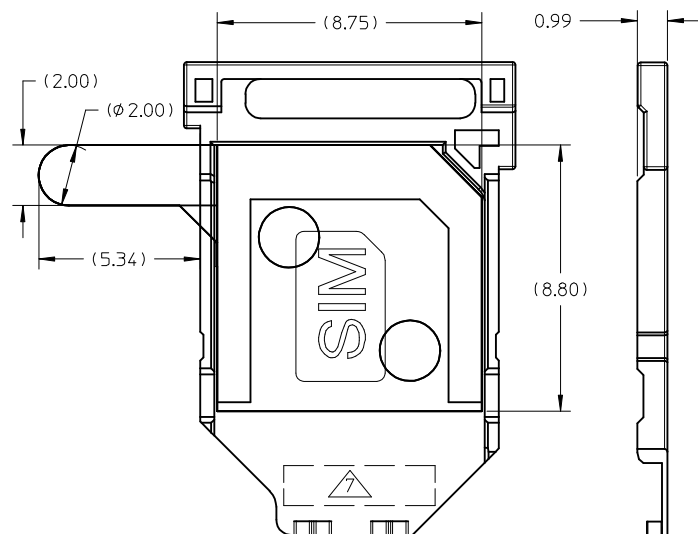
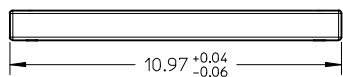
1

TRAY WITH
TAPE P/N

ADHESIVE P/N

151073-0033

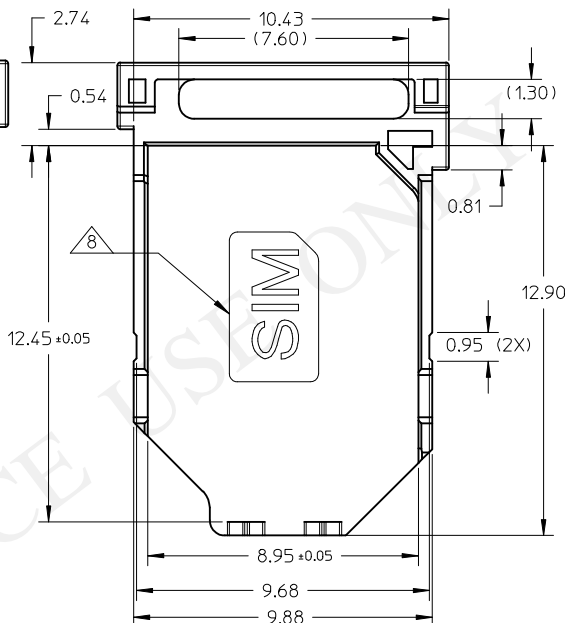
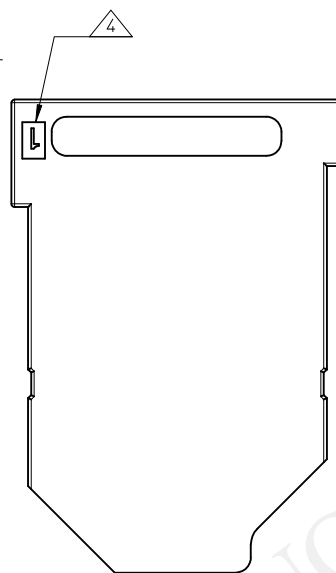
151073-0035



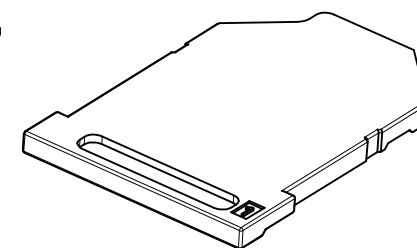
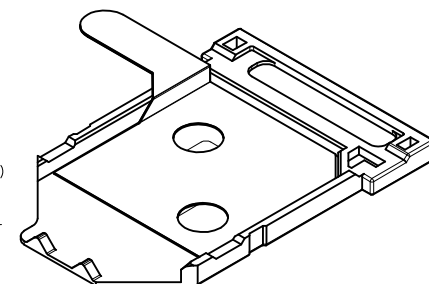
WITH THE ADHESIVE

0.68 ± 0.05

0.18 (2X)



WITHOUT THE ADHESIVE



NOTES:

1. MATERIALS:

TRAY: POM, HB, COOL GRAY 8U

ADHESIVE: SEKISUI 3805BS, 0.05MM, BLACK

2. PACKAGING SPECIFICATION: PK-151073-0002

3. TRAY TO BE USED TOGETHER WITH MOLEX CONNECTOR
(P/NO.:151073-0001/1000) ONLY.

4. CAVITY NO. LOCATION.

5. ALL WARPAGE: 0.25MM MAX.

6. UNLESS OTHERWISE SPECIFIED, FLASHES & MISMATCH
SHALL NOT EXCEED 0.10MM.

7. LOCATION OF LASER-MARKED DATECODE.

8. LOCATION OF LASER-MARKED SIM ICON,
WITHOUT LASER THE LETTERS.

9. ADHESIVE TAPE COVERED WITH RELEASE PAPER.

SEE SD-151073-0008 FOR DETAILS ON ADHESIE TAPE.

10. THE TRAY SHOULD NOT BE USED WITH SIM CUTTING CARD
(0.76-0.84 THICKNESS)

THIS DESIGN IS BASED ON DESIGN OBJECTIVES
AND IS STRICTLY TENTATIVE. IT MAY CHANGE
BASED ON RESULTS OF ADDITIONAL DESIGN
REVIEWS & VERIFICATIONS.

RELEASED EC NO: S2016-0054 DRWN:SCHEONG 2015/07/02 CHKD: APPR:SCHEONG 2015/07/14	DESCRIPTION	QUALITY SYMBOLS ▽ _A =0 ▽ _B =0 ▽ _C =0	GENERAL TOLERANCES (UNLESS SPECIFIED)		DIMENSION STYLE MM ONLY		SCALE NTS	DESIGN UNITS METRIC	THIRD ANGLE PROJECTION					
				mm	INCH	DRAWN BY SCHEONG	DATE 2015/04/23	TITLE TRAY, SLOT FINGER ACCESS NANO SIM CONNECTOR WITH DETECT PIN						
			4 PLACES	± ---	± ---	CHECKED BY	DATE							
			3 PLACES	± ---	± ---	APPROVED BY SCHEONG		DATE 2015/04/24		DOCUMENT NO. SD-151073-0007				
			2 PLACES	± 0.10	± ---									
			1 PLACE	± ---	± ---									
			0 PLACE	± ---	± ---	MATERIAL NO. 151073-0033		SHEET NO. 1 OF 1						
DRAFT WHERE APPLICABLE MUST REMAIN WITHIN DIMENSIONS			THIS DRAWING CONTAINS INFORMATION THAT IS PROPRIETARY TO MOLEX INCORPORATED AND SHOULD NOT BE USED WITHOUT WRITTEN PERMISSION											

9

8

7

6

5

4

3

2