



Chipsmall Limited consists of a professional team with an average of over 10 year of expertise in the distribution of electronic components. Based in Hongkong, we have already established firm and mutual-benefit business relationships with customers from,Europe,America and south Asia,supplying obsolete and hard-to-find components to meet their specific needs.

With the principle of "Quality Parts,Customers Priority,Honest Operation,and Considerate Service",our business mainly focus on the distribution of electronic components. Line cards we deal with include Microchip,ALPS,ROHM,Xilinx,Pulse,ON,Everlight and Freescale. Main products comprise IC,Modules,Potentiometer,IC Socket,Relay,Connector.Our parts cover such applications as commercial,industrial, and automotives areas.

We are looking forward to setting up business relationship with you and hope to provide you with the best service and solution. Let us make a better world for our industry!



Contact us

Tel: +86-755-8981 8866 Fax: +86-755-8427 6832

Email & Skype: info@chipsmall.com Web: www.chipsmall.com

Address: A1208, Overseas Decoration Building, #122 Zhenhua RD., Futian, Shenzhen, China



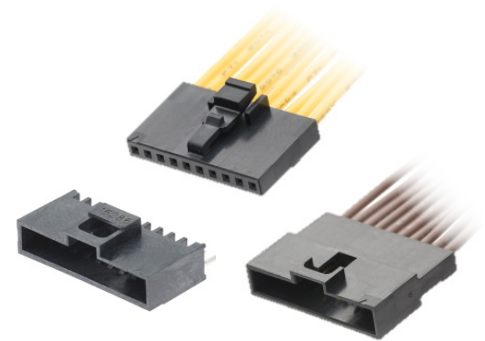
Milli-Grid™ Single-Row Connectors with Positive Lock



Milli-Grid™ single-row connectors make wire-to-wire and wire-to-board signal configurations easy and cost-efficient for data communication, consumer and other applications

Features and Benefits

Shrouded single-row design	For greater terminal protection and space-savings
Integral positive lock	Ensures secure mating and simplifies unmating
Choice of 2.60, 3.60 and 4.60mm soldertail lengths	Enables the use of PCBs in different thickness for through-hole style applications
Array of gold and tin plating options	Meets the needs for high performance or cost-efficiency
Retention peg for SMT termination (optional)	For secure connector-to-PCB processing



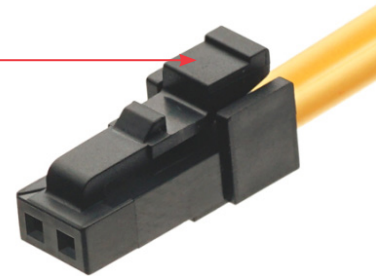
Example of a 10-circuit Milli-Grid™ Single-Row Connector solution (Remark: Wires supplied in the photo are for illustration purposes only)



2-circuit Vertical SMT Header (Series 151062)

Retention peg ensures connectors are secured to the PCB before solder-processing

Wide latch-pad surface allows the user to unmate a connection easily



2-circuit Crimped Receptacle Assembly (Series 151100 housing is used with the series 50394 terminal)

Applications

Data Communications

- High-end Computing (Servers)
- Personal Computers

Telecommunications/Networking

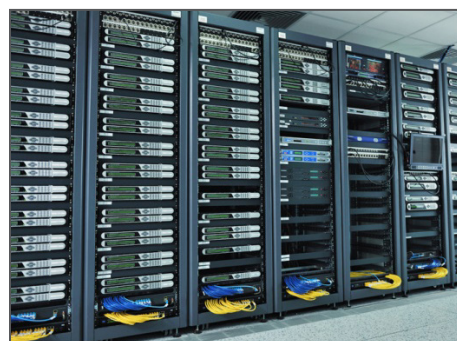
- Infrastructure

Consumer/Home Appliance

- Refrigerators
- Washing Machines and more



Personal computers



Servers



Home appliances

Milli-Grid™ Single-Row Connectors with Positive Lock



Specifications

Reference Information

Packaging:

Tube (Header)

Bulk (Crimp Header & Receptacle)

UL File No.: E29179

CSA File No.: 1585720 (LR 19980)

Mates With:

151062/63/64/65 with 151100 housing

151098 with 151100 housing

Use With:

151100 housing with 50394 terminals

151098 housing with 151087 terminals

Terminal Used: Copper Alloy

Designed In: Millimeters

RoHS: Yes

Halogen Free: Yes

Glow Wire Compliant: No

Electrical

Voltage (max.): 125VAC

Current (max.): 2.5A

Low Level Contact Resistance:

30 milliohms

5 milliohms (Crimp terminal)

Insulation Resistance: 1000 Megohms

Mechanical

Contact Insertion Force:

35N max. (latch engaged)

3.5N per circuit max (latch disengaged)

Contact Retention to Housing:

45N min. (latch engaged)

0.3N per circuit min. (latch disengaged)

Peg Insertion Force in PCB: 35 to 45N

Peg Retention Force in PCB: 5N min.

Durability (min.):

50 cycles for Gold-plated connector

25 cycles for Tin-plated connector

Physical

Housing (Header): LCP, Glass-filled, UL94V-0, Black

Housing (Crimp Receptacle): PBT, UL94V-0, Black

Housing (Crimp Header):

PBT, Glass-filled, UL94V-0, Black

Contact: Copper Alloy

Plating:

Contact Area — Refer to table below

Solder Tail Area — 2.00µm Matte Tin (Sn)

Underplating — 1.25µm Nickel (Ni)

Operating Temperature: -40 to +70°C

Ordering Information

Series No.	Components	Part Number Legend
50394	Crimp Receptacle Terminal	50394 – 805 X 1 – 0.38µm Gold 2 – 0.76µm Gold 4 – 0.05µm Gold 5 – 2.50µm Tin
150187	Crimp Header Terminal	151087 – 8X01 1 – 2.50µm Tin 2 – 0.05µm Gold 3 – 0.38µm Gold 4 – 0.76µm Gold

Series No.	Components	Part Number Legend
151062	PCB Header, Vertical, SMT	Plating Options - Without Cap 151062 – 1X XX 0 – 2.50µm Tin 1 – 0.05µm Gold 2 – 0.38µm Gold 3 – 0.76µm Gold Plating Options - With Cap 151062 – 1X XX 4 – 2.50µm Tin 5 – 0.05µm Gold 6 – 0.38µm Gold 7 – 0.76µm Gold Circuit size - With or Without Peg 151062 – 1X XX 04 to 10 (4 to 10 circuits without peg) 52 to 60 (2 to 10 circuits with peg)

Series No.	Components	Part Number Legend
151063	PCB Header, Vertical, Through-hole	Soldertail Length Options 151063 – X XX X 3 – 2.60mm 4 – 3.60mm 5 – 4.60mm Plating Options - Without Cap 151063 – X XX X 0 – 2.50µm Tin 1 – 0.05µm Gold 2 – 0.38µm Gold 3 – 0.76µm Gold Plating Options - With Cap 151063 – X XX X 4 – 2.50µm Tin 5 – 0.05µm Gold 6 – 0.38µm Gold 7 – 0.76µm Gold Circuit size - With or Without Peg 151063 – XX XX 02 to 10 (2 to 10 circuits without peg) 52 to 60 (2 to 10 circuits with peg)

Series No.	Components	Part Number	Circuits
151100	Crimp Receptacle Housing	151100-0002	2
		151100-0003	3
		151100-0004	4
		151100-0005	5
		151100-0006	6
		151100-0007	7
		151100-0008	8
		151100-0009	9
		151100-0010	10
		151098	Crimp Header Housing
151098-0003	3		
151098-0004	4		
151098-0005	5		
151098-0006	6		
151098-0007	7		
151098-0008	8		
151098-0009	9		
151098-0010	10		

Series No.	Components	Part Number Legend
151064	PCB Header, Right Angle SMT	Plating Options - Without Cap 151064 – 1X XX 0 – 2.50µm Tin 1 – 0.05µm Gold 2 – 0.38µm Gold 3 – 0.76µm Gold Circuit size - With or Without Peg 151064 – 1X XX 02 to 10 (2 to 10 circuits without peg) 52 to 60 (2 to 10 circuits with peg)

Series No.	Components	Part Number Legend
151065	PCB Header, Vertical, Through-hole	Soldertail Length Options 151065 – X XX X 3 – 2.60mm 4 – 3.60mm 5 – 4.60mm Plating Options 151065 – X XX X 0 – 2.50µm Tin 1 – 0.05µm Gold 2 – 0.38µm Gold 3 – 0.76µm Gold Circuit size - With or Without Peg 151065 – XX XX 02 to 10 (2 to 10 circuits without peg) 52 to 60 (2 to 10 circuits with peg)