



Chipsmall Limited consists of a professional team with an average of over 10 year of expertise in the distribution of electronic components. Based in Hongkong, we have already established firm and mutual-benefit business relationships with customers from,Europe,America and south Asia,supplying obsolete and hard-to-find components to meet their specific needs.

With the principle of “Quality Parts,Customers Priority,Honest Operation,and Considerate Service”,our business mainly focus on the distribution of electronic components. Line cards we deal with include Microchip,ALPS,ROHM,Xilinx,Pulse,ON,Everlight and Freescale. Main products comprise IC,Modules,Potentiometer,IC Socket,Relay,Connector.Our parts cover such applications as commercial,industrial, and automotives areas.

We are looking forward to setting up business relationship with you and hope to provide you with the best service and solution. Let us make a better world for our industry!



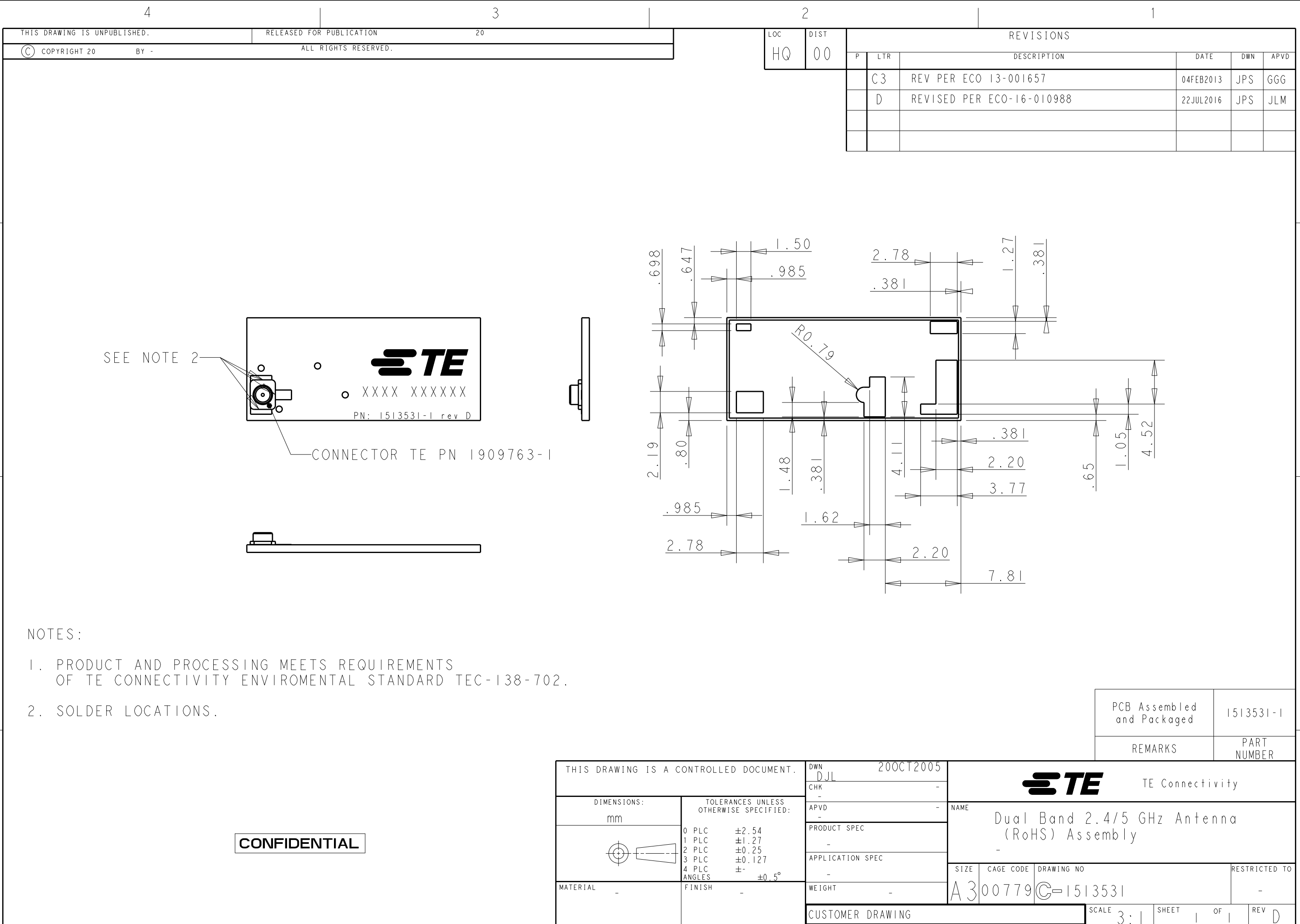
Contact us

Tel: +86-755-8981 8866 Fax: +86-755-8427 6832

Email & Skype: info@chipsmall.com Web: www.chipsmall.com

Address: A1208, Overseas Decoration Building, #122 Zhenhua RD., Futian, Shenzhen, China





SEE NOTE 2


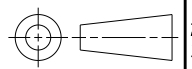
CONNECTOR TE PN 1909763-1

NOTES:

1. PRODUCT AND PROCESSING MEETS REQUIREMENTS OF TE CONNECTIVITY ENVIROMENTAL STANDARD TEC-138-702.
2. SOLDER LOCATIONS.

CONFIDENTIAL

LOC	DIST	REVISIONS					
		P	LTR	DESCRIPTION	DATE	DWN	APVD
HQ	00		C3	REV PER ECO 13-001657	04FEB2013	JPS	GGG
			D	REVISED PER ECO-16-010988	22JUL2016	JPS	JLM

THIS DRAWING IS A CONTROLLED DOCUMENT.		DWN	DJL	20OCT2005	 TE Connectivity		
DIMENSIONS:		CHK	-	-			
mm		APVD	-	-	NAME		
		PRODUCT SPEC			Dual Band 2.4/5 GHz Antenna (RoHS) Assembly		
		APPLICATION SPEC			-		
MATERIAL		WEIGHT			SIZE	CAGE CODE	DRAWING NO
-		-			A3	00779	C-1513531
FINISH		CUSTOMER DRAWING			SCALE	SHEET	OF
-		-			3:1	1	1
					REV	D	