



Chipsmall Limited consists of a professional team with an average of over 10 year of expertise in the distribution of electronic components. Based in Hongkong, we have already established firm and mutual-benefit business relationships with customers from,Europe,America and south Asia,supplying obsolete and hard-to-find components to meet their specific needs.

With the principle of “Quality Parts,Customers Priority,Honest Operation,and Considerate Service”,our business mainly focus on the distribution of electronic components. Line cards we deal with include Microchip,ALPS,ROHM,Xilinx,Pulse,ON,Everlight and Freescale. Main products comprise IC,Modules,Potentiometer,IC Socket,Relay,Connector.Our parts cover such applications as commercial,industrial, and automotives areas.

We are looking forward to setting up business relationship with you and hope to provide you with the best service and solution. Let us make a better world for our industry!



## Contact us

Tel: +86-755-8981 8866 Fax: +86-755-8427 6832

Email & Skype: [info@chipsmall.com](mailto:info@chipsmall.com) Web: [www.chipsmall.com](http://www.chipsmall.com)

Address: A1208, Overseas Decoration Building, #122 Zhenhua RD., Futian, Shenzhen, China

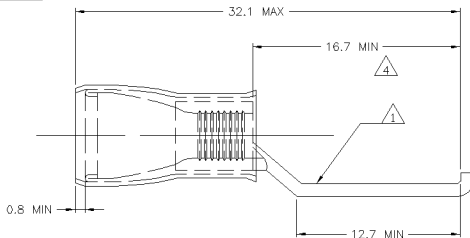


THIS DRAWING IS UNPUBLISHED.  
 RELEASED FOR PUBLICATION  
 COPYRIGHT BY TYCO ELECTRONICS CORPORATION. ALL RIGHTS RESERVED.

LOC	DIST	REV	DESCRIPTION	DATE	BY	APP'D
G	14	C1	REV PER ECR 08-018475	02AUG06	JR	TM

**AMP**  
WIRE RANGE

12-10 AWG  
SOLID OR STRANDED



- 1 STAMP AMP 12-10\*, LOCATE APPROX AS SHOWN.
- 2 BODY - COPPER PER ASTM B-152  
SLEEVE - COPPER PER ASTM B-152  
INSULATION - NYLON
- 3 BODY - TIN PLATE PER ASTM B-545  
SLEEVE - TIN PLATE PER ASTM B-545  
INSULATION - COLOR, YELLOW
- 4 DIMENSION APPLIES FROM EDGE OF METAL WIRE BBL TO FLANGE.
- 5 WIRE INSULATION DIA 3.8-6.4
- 6 TONGUE MATERIAL THK 1.07 MAX
- 7 FLANGE WIDTH 4.6

500	LOOSE PC	151795
QTY	DESCRIPTION	PART NO

# AMP INCORPORATED CUSTOMER SERVICE SYSTEMS

FOR ADDITIONAL PRODUCT INFORMATION OR COPIES OF DRAWINGS AND TECHNICAL DOCUMENTS	PRODUCT INFORMATION CENTER 1-800-522-6752
FOR APPLICATION TOOLING INFORMATION	TOOLING ASSISTANCE CENTER 1-800-722-1111
FOR ORDER ENTRY	1-800-526-5142

MAX. RECOMMENDED OPERATING TEMPERATURE: 105°C	VOLTAGE RATING: 300V MAX
CIRCULAR MIL AREA: 2.82-6.64mm <sup>2</sup> (5180-13100) SOLID OR STRANDED	

THIS DRAWING IS A CONTROLLED DOCUMENT.

DIMENSIONS:	TOLERANCES UNLESS OTHERWISE SPECIFIED:
mm	
	0 PLG ± .1 1 PLG ± .1 2 PLG ± 0.20 3 PLG ± .1 4 PLG ± .1 ANGLES ± .1
MATERIAL	FINISH
- 2	- 3

DRN JR RUTH	02AUG06
CHK T. MICHELUTTI	02AUG06
APP'D T. MICHELUTTI	02AUG06
PRODUCT SPEC	
APPLICATION SPEC	
WEIGHT	

<b>tyco</b> <b>Electronics</b>	Tyco Electronics Corporation Harrisburg, PA 17105-3608		
NAME TERMINAL, LIPPED BLADE, P.I.D.G., WIRE SIZE: 12-10 AWG			
SIZE	DATE CODE	DRAWING NO	RESTRICTED TO
A3	000779	C-151795	—
SCALE		SHEET	REV