



Chipsmall Limited consists of a professional team with an average of over 10 year of expertise in the distribution of electronic components. Based in Hongkong, we have already established firm and mutual-benefit business relationships with customers from,Europe,America and south Asia,supplying obsolete and hard-to-find components to meet their specific needs.

With the principle of “Quality Parts,Customers Priority,Honest Operation,and Considerate Service”,our business mainly focus on the distribution of electronic components. Line cards we deal with include Microchip,ALPS,ROHM,Xilinx,Pulse,ON,Everlight and Freescale. Main products comprise IC,Modules,Potentiometer,IC Socket,Relay,Connector.Our parts cover such applications as commercial,industrial, and automotives areas.

We are looking forward to setting up business relationship with you and hope to provide you with the best service and solution. Let us make a better world for our industry!



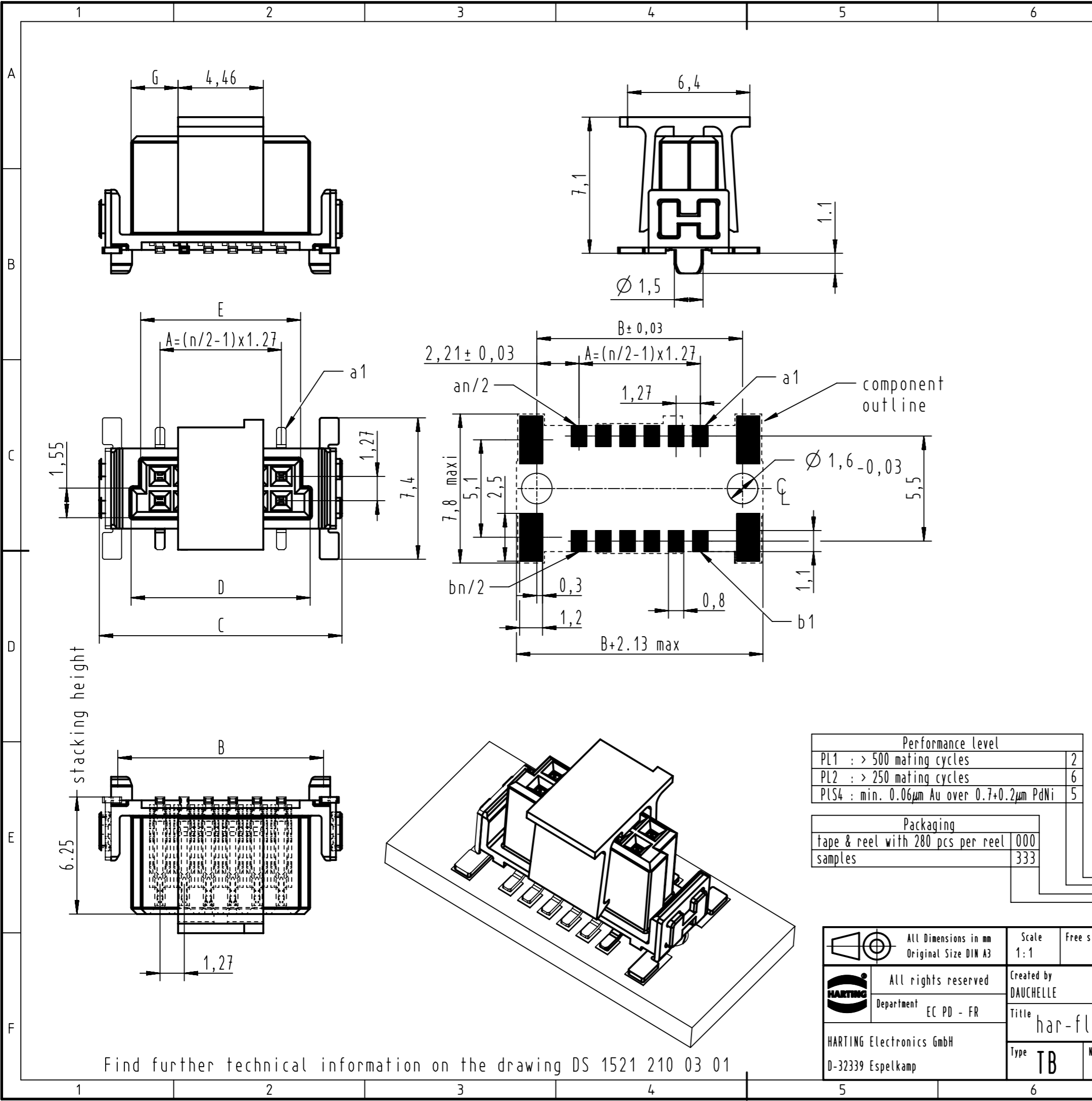
Contact us

Tel: +86-755-8981 8866 Fax: +86-755-8427 6832

Email & Skype: info@chipsmall.com Web: www.chipsmall.com

Address: A1208, Overseas Decoration Building, #122 Zhenhua RD., Futian, Shenzhen, China





Part number		nb of cont.	A	B	C	D	E	G
15 21 006 x601 xxx	006	2.54	6.96	8.89	5.56	4.56	1.19	
15 21 008 x601 xxx	008	3.81	8.23	10.16	6.83	5.83	1.19	
15 21 010 x601 xxx	010	5.08	9.50	11.43	8.10	7.10	2.46	
15 21 012 x601 xxx	012	6.35	10.77	12.70	9.37	8.37	2.46	
15 21 014 x601 xxx	014	7.62	12.04	13.97	10.64	9.64	3.73	
15 21 016 x601 xxx	016	8.89	13.31	15.24	11.91	10.91	3.73	
15 21 018 x601 xxx	018	10.16	14.58	16.51	13.18	12.18	5.00	
15 21 020 x601 xxx	020	11.43	15.85	17.78	14.45	13.45	5.00	
15 21 022 x601 xxx	022	12.70	17.12	19.05	15.72	14.72	6.27	
15 21 024 x601 xxx	024	13.97	18.39	20.32	16.99	15.99	6.27	
15 21 026 x601 xxx	026	15.24	19.66	21.59	18.26	17.26	7.54	
15 21 028 x601 xxx	028	16.51	20.93	22.86	19.53	18.53	7.54	
15 21 030 x601 xxx	030	17.78	22.20	24.13	20.80	19.80	8.81	
15 21 032 x601 xxx	032	19.05	23.47	25.40	22.07	21.07	8.81	
15 21 034 x601 xxx	034	20.32	24.74	26.67	23.34	22.34	10.08	
15 21 036 x601 xxx	036	21.59	26.01	27.94	24.61	23.61	10.08	
15 21 038 x601 xxx	038	22.86	27.28	29.21	25.88	24.88	11.35	
15 21 040 x601 xxx	040	24.13	28.55	30.48	27.15	26.15	11.35	
15 21 042 x601 xxx	042	25.40	29.82	31.75	28.42	27.42	12.62	
15 21 044 x601 xxx	044	26.67	31.09	33.02	29.69	28.69	12.62	
15 21 046 x601 xxx	046	27.94	32.36	34.29	30.96	29.69	13.89	
15 21 048 x601 xxx	048	29.21	33.63	35.56	32.23	31.23	13.89	
15 21 050 x601 xxx	050	30.48	34.90	36.83	33.50	32.50	15.16	
15 21 052 x601 xxx	052	31.75	36.17	38.10	34.77	33.77	15.16	
15 21 054 x601 xxx	054	33.02	37.44	39.37	36.04	35.04	16.43	
15 21 056 x601 xxx	056	34.29	38.71	40.64	37.31	36.31	16.43	
15 21 058 x601 xxx	058	35.56	39.98	41.91	38.58	37.58	17.70	
15 21 060 x601 xxx	060	36.83	41.25	43.18	39.85	38.85	17.70	
15 21 062 x601 xxx	062	38.10	42.52	44.45	41.12	40.12	18.97	
15 21 064 x601 xxx	064	39.37	43.79	45.72	42.39	41.39	18.97	
15 21 066 x601 xxx	066	40.64	45.06	46.99	43.66	42.66	20.24	
15 21 068 x601 xxx	068	41.91	46.33	48.26	44.93	43.93	20.24	
15 21 070 x601 xxx	070	43.18	47.60	49.53	46.20	45.20	21.51	
15 21 072 x601 xxx	072	44.45	48.87	50.80	47.47	46.47	21.51	
15 21 074 x601 xxx	074	45.72	50.14	52.07	48.74	47.74	22.78	
15 21 076 x601 xxx	076	46.99	51.41	53.34	50.01	49.01	22.78	
15 21 078 x601 xxx	078	48.26	52.68	54.61	51.28	50.28	24.05	
15 21 080 x601 xxx	080	49.53	53.95	55.88	52.55	51.55	24.05	
15 21 082 x601 xxx	082	50.80	55.22	57.15	53.82	52.82	25.32	
15 21 084 x601 xxx	084	52.07	56.49	58.42	55.09	54.09	25.32	
15 21 086 x601 xxx	086	53.34	57.76	59.69	56.36	55.36	26.59	
15 21 088 x601 xxx	088	54.61	59.03	60.96	57.63	56.63	26.59	
15 21 090 x601 xxx	090	55.88	60.30	62.23	58.90	57.90	27.86	
15 21 092 x601 xxx	092	57.15	61.57	63.50	60.17	59.17	27.86	
15 21 094 x601 xxx	094	58.42	62.84	64.77	61.44	60.44	29.13	
15 21 096 x601 xxx	096	59.69	64.11	66.04	62.71	61.71	29.13	
15 21 098 x601 xxx	098	60.96	65.38	67.31	63.98	62.98	30.40	
15 21 100 x601 xxx	100	62.23	66.65	68.58	65.25	64.25	30.40	

Performance level	
PL1 : > 500 mating cycles	2
PL2 : > 250 mating cycles	6
PLS4 : min. 0.06µm Au over 0.7+0.2µm PdNi	5

Packaging	
tape & reel with 280 pcs per reel	000
samples	333

	All Dimensions in mm Original Size DIN A3	Scale 1:1	Free size tol.	Ref. Sub.
	All rights reserved Department EC PD - FR	Created by DAUCHELLE	Inspected by DE VANSAY	Standardisation HOFFMANN
Title har-flex str. fe. 6.25mm, vacuum cover				Date 2013-01-25
State Final Release				Doc-Key / ECH-Nr. 100227879/UGD/002/B 50000057780
HARTING Electronics GmbH D-32339 Espelkamp		Type TB	Number 1521XXXX601_XXX	Rev. B
				Page 1/1

Find further technical information on the drawing DS 1521 210 03 01