



Chipsmall Limited consists of a professional team with an average of over 10 year of expertise in the distribution of electronic components. Based in Hongkong, we have already established firm and mutual-benefit business relationships with customers from,Europe,America and south Asia,supplying obsolete and hard-to-find components to meet their specific needs.

With the principle of “Quality Parts,Customers Priority,Honest Operation,and Considerate Service”,our business mainly focus on the distribution of electronic components. Line cards we deal with include Microchip,ALPS,ROHM,Xilinx,Pulse,ON,Everlight and Freescale. Main products comprise IC,Modules,Potentiometer,IC Socket,Relay,Connector.Our parts cover such applications as commercial,industrial, and automotives areas.

We are looking forward to setting up business relationship with you and hope to provide you with the best service and solution. Let us make a better world for our industry!



## Contact us

Tel: +86-755-8981 8866 Fax: +86-755-8427 6832

Email & Skype: info@chipsmall.com Web: www.chipsmall.com

Address: A1208, Overseas Decoration Building, #122 Zhenhua RD., Futian, Shenzhen, China



**AMP PIDG**

**Kabelschuhe und  
Verbinder (hoher  
Temperaturbereich)  
für dünnwandige Kabel**  
(Fortsetzung)

**Temperaturbereich:**  
max. 190 °C

**Kabelschuhmaterial:**  
Cu, vernickelt

**Hülse:**  
Teflon

**Zu verarbeiten mit:**  
dünnwandigem Kabel  
mit vernickelten Leitern

**Leiterquerschnittsbereich:**  
2,0–3,0 mm<sup>2</sup>

**AWG:**  
14–12 (weiß)

**Isolierungsdurchmesser:**  
2,3–3,2 mm

**Handzangen:**  
AWG 14 = Best.-Nr. **576782-0**  
AWG 12 = Best.-Nr. **576783-0**

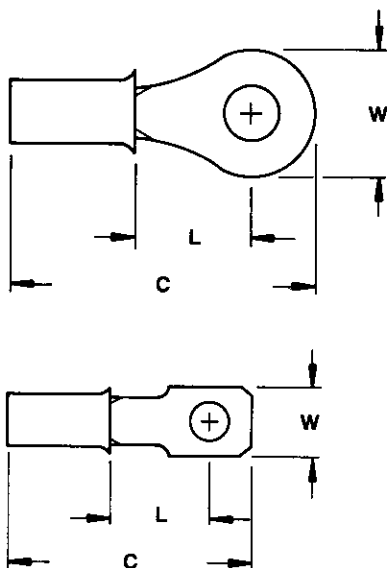
**Leiterquerschnittsbereich:**  
6,0 mm<sup>2</sup>

**AWG:**  
10 (schwarz)

**Isolierungsdurchmesser:**  
2,6–3,8 mm

**Handzange:**  
Best.-Nr. **576784-0**

**Weitere  
Verarbeitungsmöglichkeiten  
siehe Seiten 22-63–22-78.**



Bolzen Bolt M	Bolzenloch Stud Hole (mm)	Abmessungen/Dimensions (mm)			Bestell-Nummer Part Number
		W	L	C	
2,5	3,0	6,4	18,1	4,1	153110-0
3,0–3,5	3,6	6,4	18,1	4,1	153111-0
4,0	4,3	8,7	22,0	6,9	153112-0
5,0	5,2	8,7	22,0	6,9	153113-0
6,0	6,7	11,9	27,6	10,9	153114-0
8,0	8,3	11,9	27,6	10,9	153115-0
9,0	9,5	13,5	30,8	13,3	153116-0
2,5	3,0	5,5	20,5	6,9	153476-0*

\* mit verlängerter Zunge

\* Long Blade Terminal

**AMP PIDG**

**High Temperature  
Range Terminals  
and Splices  
for Thin Wall Cables**  
(continued)

**Temperature Rating:**  
max. 190 °C

**Terminal Material:**  
Copper, nickel plated

**Sleeve:**  
Teflon

**To Apply with:**  
Thin wall cables  
with nickel plated conductors

**Wire Range:**  
2,0–3,0 mm<sup>2</sup>

**AWG:**  
14–12 (white)

**Insulation Range:**  
2,3–3,2 mm

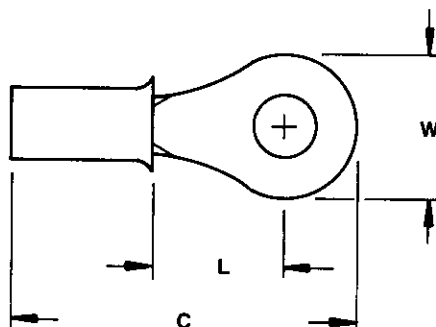
**Hand Tools:**  
AWG 14 = Part No. **576782-0**  
AWG 12 = Part No. **576783-0**

**Wire Range:**  
6,0 mm<sup>2</sup>

**AWG:**  
10 (black)

**Insulation Range:**  
2,6–3,8 mm

**Hand Tool:**  
Part No. **576784-0**



Bolzen Bolt M	Bolzenloch Stud Hole (mm)	Abmessungen/Dimensions (mm)			Bestell-Nummer Part Number
		W	L	C	
2,5	3,0	7,1	24,0	5,4	50844-0
3,0–3,5	3,6	9,5	27,3	7,5	50845-0
4,0	4,3	9,5	27,3	7,5	50845-1
5,0	5,0	9,5	27,3	7,5	50845-2
6,0	6,7	13,5	32,6	10,9	50846-0
8,0	8,3	13,5	33,5	11,7	50847-0
9,0	9,5	15,0	35,8	13,3	50848-0

**Additional  
Termination Possibilities  
siehe pages 22-63–22-78.**