



Chipsmall Limited consists of a professional team with an average of over 10 year of expertise in the distribution of electronic components. Based in Hongkong, we have already established firm and mutual-benefit business relationships with customers from,Europe,America and south Asia,supplying obsolete and hard-to-find components to meet their specific needs.

With the principle of “Quality Parts,Customers Priority,Honest Operation,and Considerate Service”,our business mainly focus on the distribution of electronic components. Line cards we deal with include Microchip,ALPS,ROHM,Xilinx,Pulse,ON,Everlight and Freescale. Main products comprise IC,Modules,Potentiometer,IC Socket,Relay,Connector.Our parts cover such applications as commercial,industrial, and automotives areas.

We are looking forward to setting up business relationship with you and hope to provide you with the best service and solution. Let us make a better world for our industry!



## Contact us

Tel: +86-755-8981 8866 Fax: +86-755-8427 6832

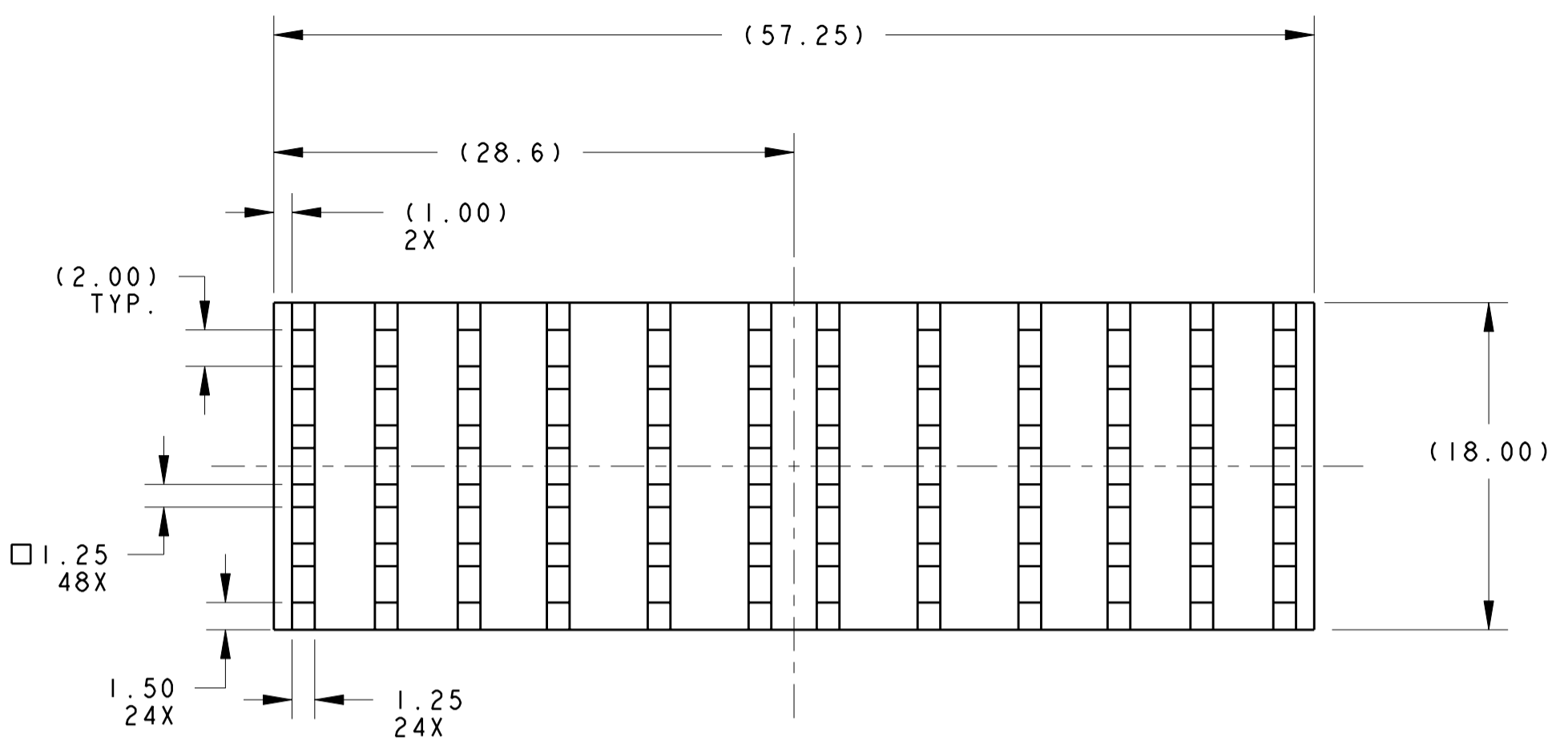
Email & Skype: info@chipsmall.com Web: www.chipsmall.com

Address: A1208, Overseas Decoration Building, #122 Zhenhua RD., Futian, Shenzhen, China

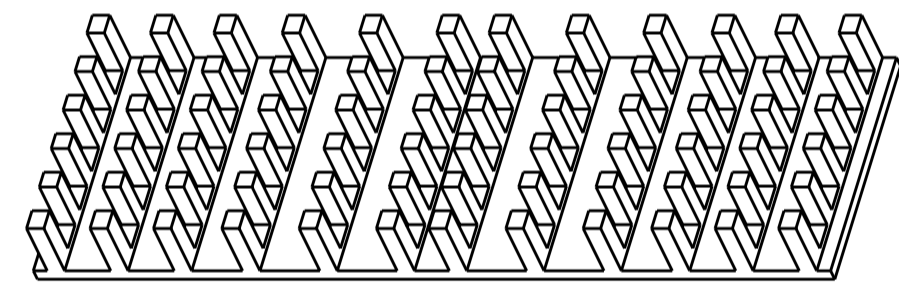
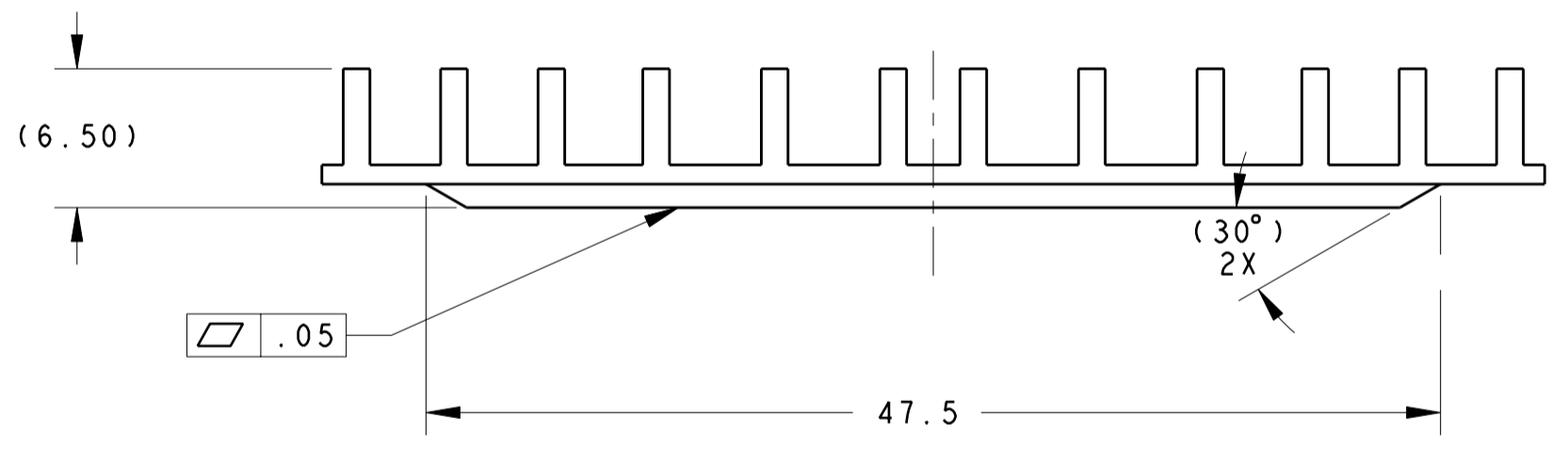
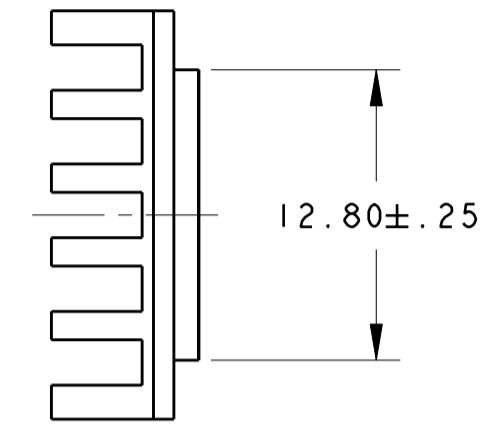


THIS DRAWING IS UNPUBLISHED. RELEASED FOR PUBLICATION  
 © COPYRIGHT 2011 ALL RIGHTS RESERVED.

REVISIONS							
LOC	DIST	P	LTR	DESCRIPTION	DATE	DWN	APVD
-	-	K1		REVISED PER ECO-11-005294	07APR2011	RK	HMR



NOTES: UNLESS OTHERWISE SPECIFIED:  
 1. INTERPRET DRAWING PER ASME Y14.5M - 1994.



SCALE = 2X

1542618-2  
 TE CONNECTIVITY  
 PART NO

THIS DRAWING IS A CONTROLLED DOCUMENT.		DWN: E. TAO 3-26-03	TE Connectivity	
		CHK: S. G 3-16-03		
DIMENSIONS: mm 		TOLERANCES UNLESS OTHERWISE SPECIFIED: 0 PLC ± .5 1 PLC ± .20 2 PLC ± .10 3 PLC ± .10 4 PLC ± .10 ANGLES ± 1° FINISH		NAME: XFP. MSA SAN APPLICATION HEATSINK 6.5mm TALL
MATERIAL: 6063-T5 ALUMINUM FINISH: ELECTROLESS NICKEL		PRODUCT SPEC: - APPLICATION SPEC: - WEIGHT: -	SIZE: A2 CAGE CODE: - DRAWING NO: 1542618	RESTRICTED TO: -
CUSTOMER DRAWING			SCALE: 4:1	SHEET 1 OF 1 REV K1