



Chipsmall Limited consists of a professional team with an average of over 10 year of expertise in the distribution of electronic components. Based in Hongkong, we have already established firm and mutual-benefit business relationships with customers from,Europe,America and south Asia,supplying obsolete and hard-to-find components to meet their specific needs.

With the principle of “Quality Parts,Customers Priority,Honest Operation,and Considerate Service”,our business mainly focus on the distribution of electronic components. Line cards we deal with include Microchip,ALPS,ROHM,Xilinx,Pulse,ON,Everlight and Freescale. Main products comprise IC,Modules,Potentiometer,IC Socket,Relay,Connector.Our parts cover such applications as commercial,industrial, and automotives areas.

We are looking forward to setting up business relationship with you and hope to provide you with the best service and solution. Let us make a better world for our industry!



Contact us

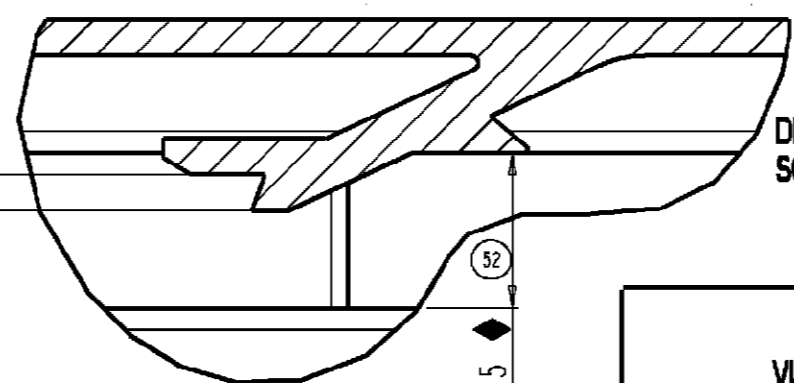
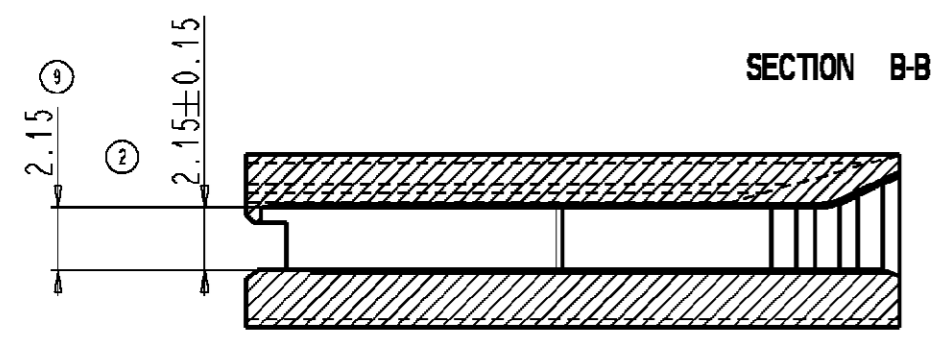
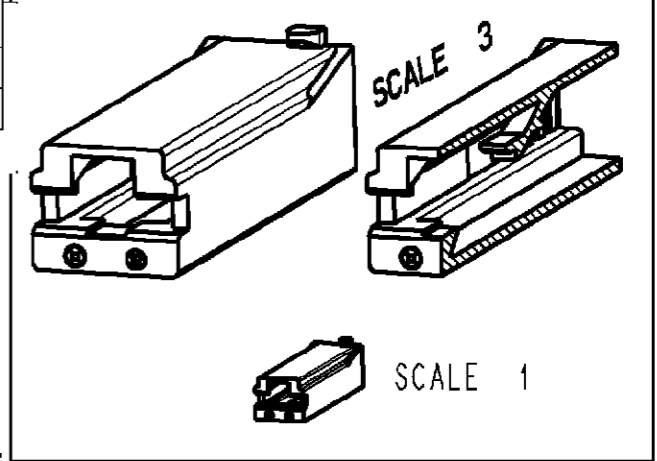
Tel: +86-755-8981 8866 Fax: +86-755-8427 6832

Email & Skype: info@chipsmall.com Web: www.chipsmall.com

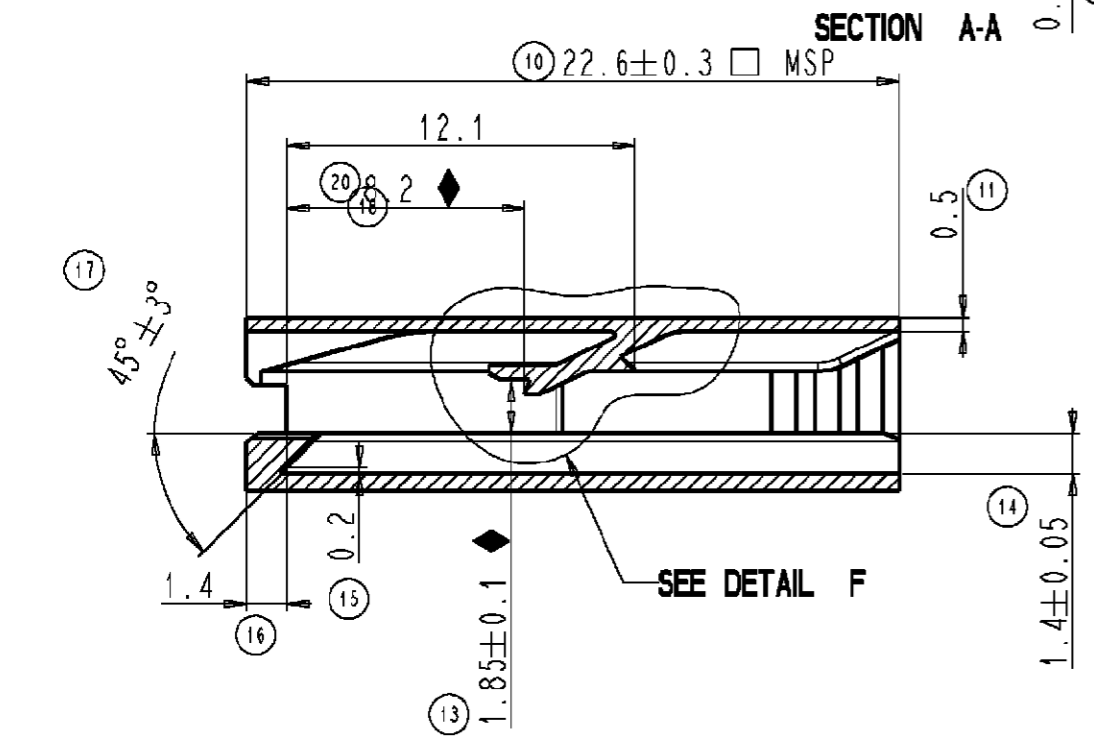
Address: A1208, Overseas Decoration Building, #122 Zhenhua RD., Futian, Shenzhen, China



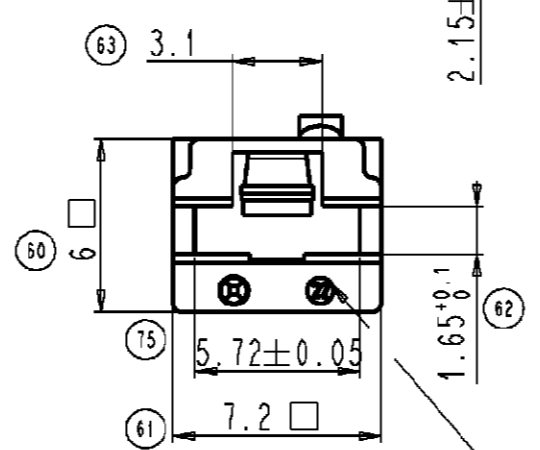
PRONER COMATEL P/N	Tyco Electronics P/N
P8084480	0-1544376-1
P808448002	0-1544376-2
P8086480	0-1544376-3



DETAIL F
SCALE 10

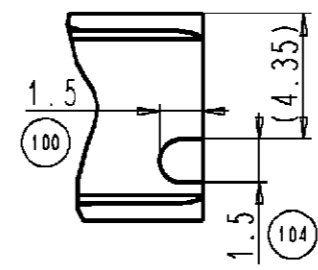
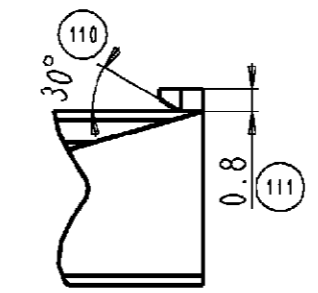


SECTION A-A



Numero empreinte en creux 0.1

VUE ERGOT



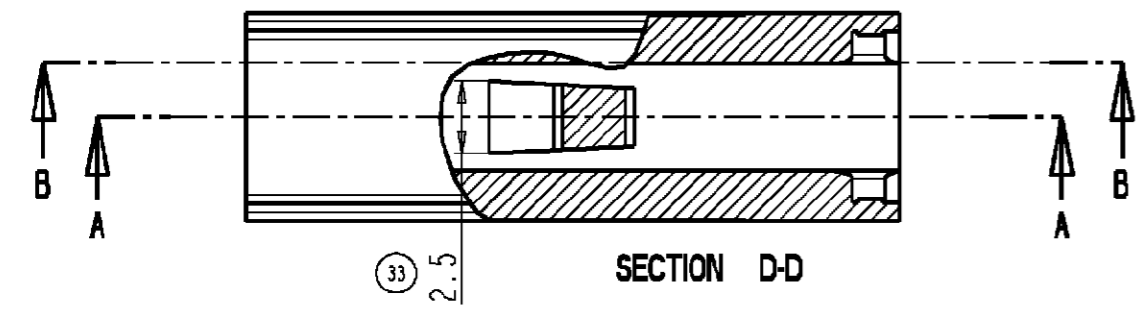
Valeur FI et FE du clip dans porte clip

FI < 15N	FE > 60N
----------	----------

NOTA:

- MSP = Cote suivie en M.S.P.
- ◆ = Cote fonctionnelle
- () = Cote pour information
- PM = Cote pour mémoire
- Dépouille générale comprise dans la tolérance

volume = 444 mm³



SECTION D-D

P808448002	SMP 108 teintée Noir	/	/	/
P8086480	SMP 136	/	/	/
P8084480	SMP 108	/	/	/
Référence/désignation	Matière	Traitement	Protection	Quantité

Sous-Ens. : /	POUR DIFFUSION
Ensemble : /	

Correction erreur tolérance cote 62 (+0.1/0 ald +0.01/0)	/	D.Bt	08.02.01	JDr	D3
Modification de la forme interieure avant	1439	ESr	17.10.00	JDr	D2
Ajout ergot de détrompage	1372	D.Bt	24.02.00	NGn	D1
MàJ tol. cote 52 (±0.05 ald +0/-0.05), MàJ matière.	1352	D.Bt	23.02.00	N.Gn	C2
Ajout ref P808448002	1352	D.Bt	07.12.99	N.Gn	C1
Fi Max passe de 10 à 15 N suite sup. mur anti-bruit	/	D.Bt	24.09.99	N.Gn	B2
Suppression mur anti-bruit	/	D.Bt	01.09.99	N.Gn	B1
Modif. IT cote 10	/	ALe	19/02/99	NGn	A3
MAJ cotes	/	ALe	22/01/99	NGn	A2
Création du plan	/	ALe	25/03/98	B0r	A1
Nature de la Modification	N° Avis Modif.	Dessiné par	Date	Approuvé par	Ind.

PORTE CLIP POUR CLIP 4.8 SECU.

PRONER COMATEL
 DEPARTEMENT TECHNIQUE
 38530 CHAPAREILLAN
 Tél: 04 76 45 34 34 Fax: 04 76 45 34 27

Echelle: 4:1	Masse: /
Tol. Lin.: ±0.1	Format A3
Tol. Ang.: ±5°	

3787 C 001

Reproduction et diffusion interdites sans autorisation