



Chipsmall Limited consists of a professional team with an average of over 10 year of expertise in the distribution of electronic components. Based in Hongkong, we have already established firm and mutual-benefit business relationships with customers from,Europe,America and south Asia,supplying obsolete and hard-to-find components to meet their specific needs.

With the principle of “Quality Parts,Customers Priority,Honest Operation,and Considerate Service”,our business mainly focus on the distribution of electronic components. Line cards we deal with include Microchip,ALPS,ROHM,Xilinx,Pulse,ON,Everlight and Freescale. Main products comprise IC,Modules,Potentiometer,IC Socket,Relay,Connector.Our parts cover such applications as commercial,industrial, and automotives areas.

We are looking forward to setting up business relationship with you and hope to provide you with the best service and solution. Let us make a better world for our industry!



Contact us

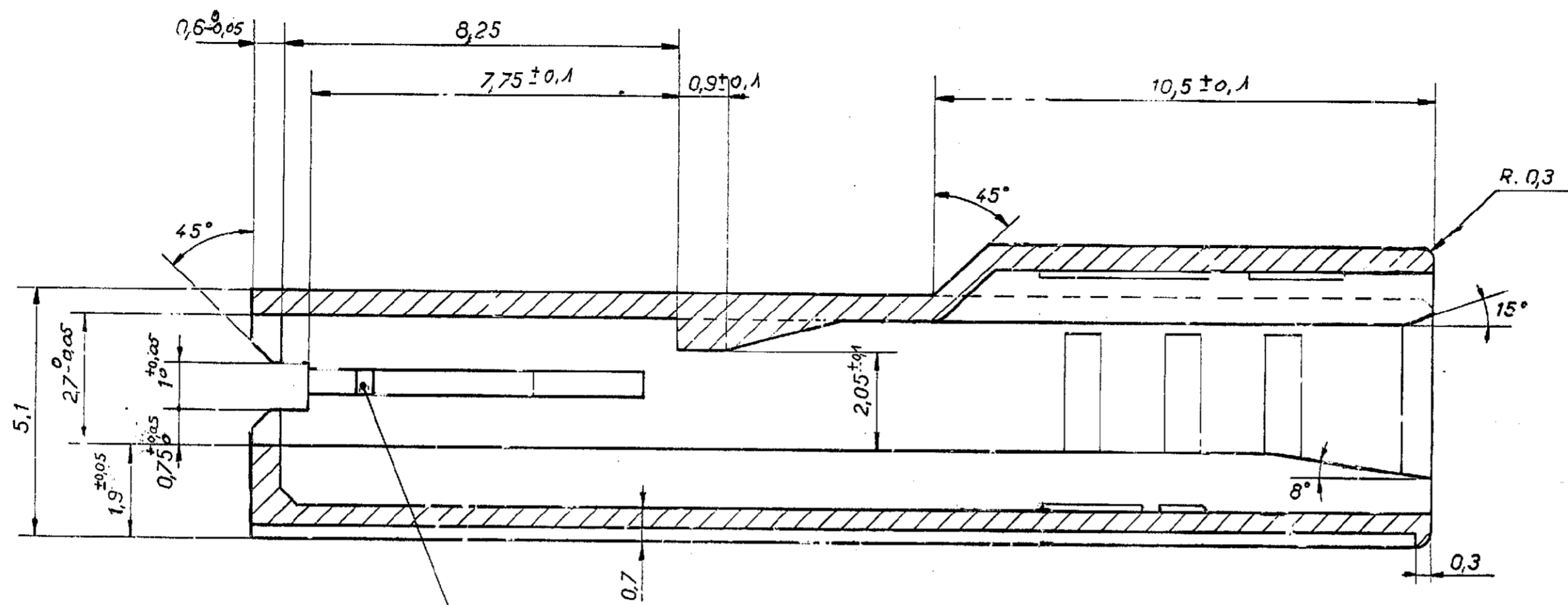
Tel: +86-755-8981 8866 Fax: +86-755-8427 6832

Email & Skype: info@chipsmall.com Web: www.chipsmall.com

Address: A1208, Overseas Decoration Building, #122 Zhenhua RD., Futian, Shenzhen, China

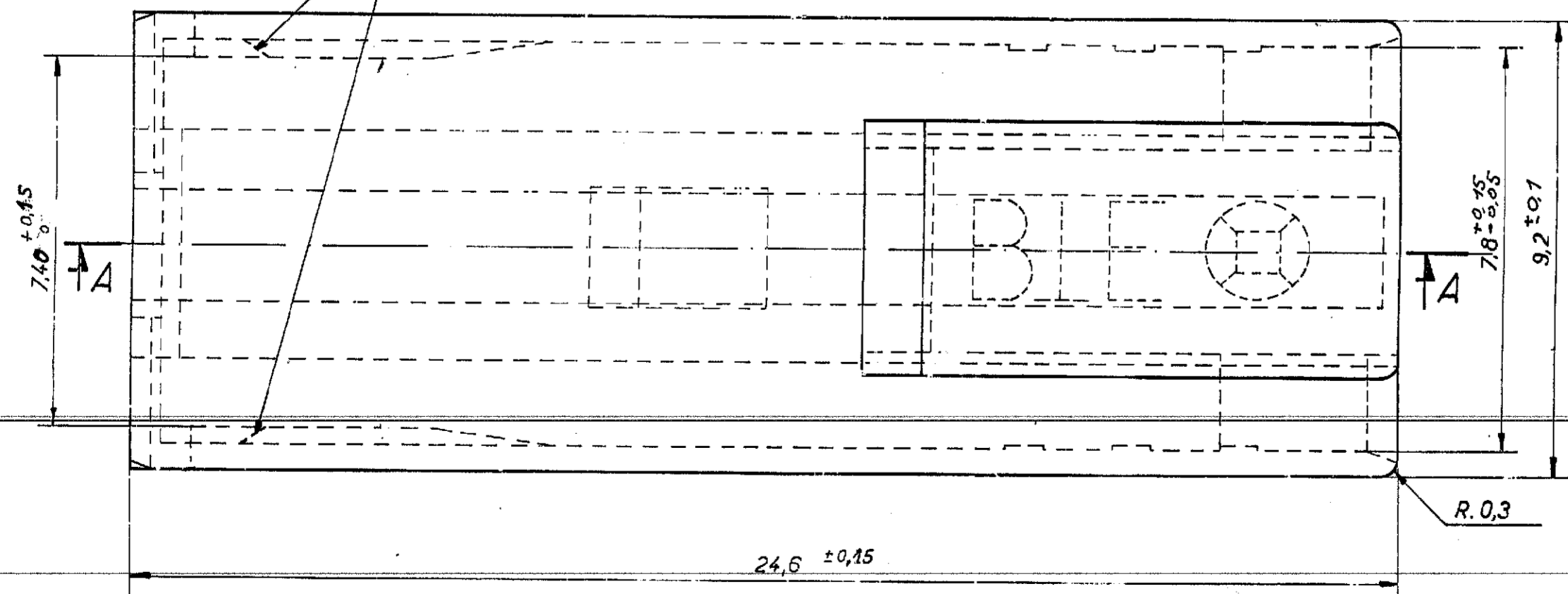
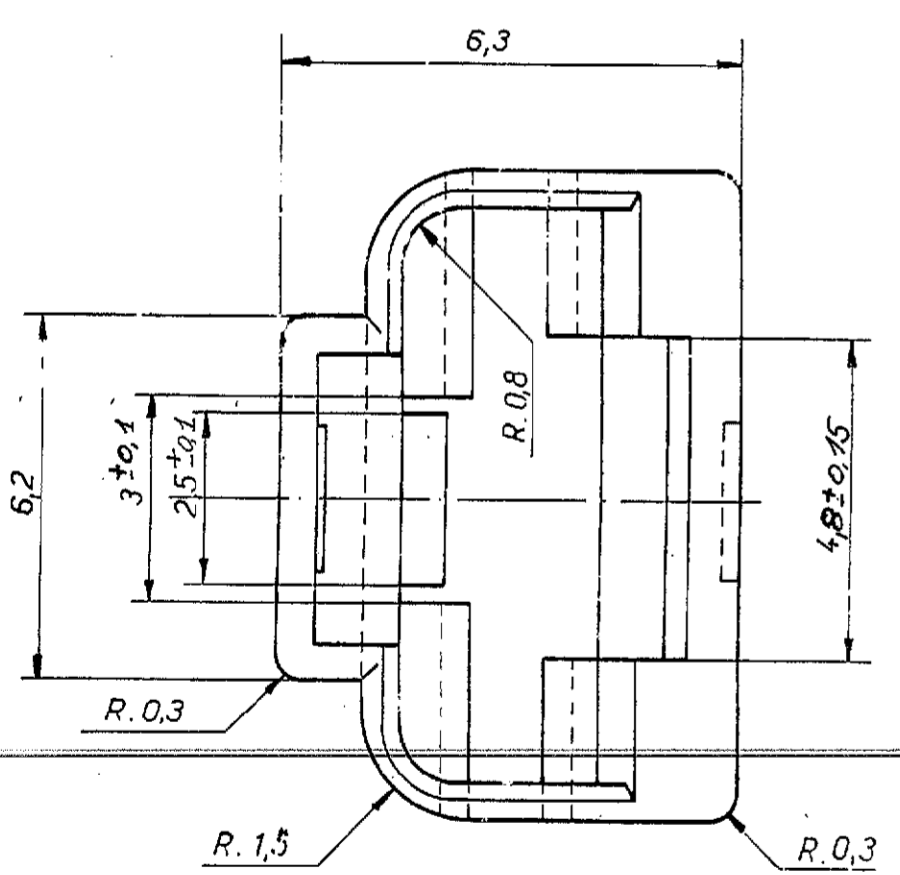


COUPE AA



COULEUR	REF PRONER	REF PRONER
Transparent	84882	
Blanc	84882 - 01	
Noir	84882 - 02	85882 - 02
Rouge	84882 - 03	Référence unique
Bleu	84882 - 04	
Jaune	84882 - 05	
Gris	84882 - 06	
Rose	84882 - 07	
Vert	84882 - 08	
Marron	84882 - 09	
Lilas	84882 - 10	
Ivoire	84882 - 11	
Orange	84882 - 12	

(Formes admises)
(11)



PRONER COMATEL P/N	Tyco Electronics P/N
P8010084882	1544456-1
P801008488202	1544456-2
P801008588202	1544456-4

		Remise en conformité Plan C	✓	I.B	6.2.88	B2
		Nouvel moule - 7,40±0,15 → 7,40±0,05	520	I.B	24.11.95	B1
voir tableau			463	P.F.	13/02/95	A1
REF	MATIERE	OBSERVATION	AMN	Par	date	Ind
PRONER 38.40 allée du Closeau 93.160 Noisy-le-Grand Tél. 4303.56.89						
Moule	Tolérance générale	CAPUCHON pour CLIP de 6,3		Ech.	10	dessiné G.T
	±0,05	ENFICHAGE DOUX (série 74 000)		date	12.02.91	vérifié
	±1°			N° C 10660		