



Chipsmall Limited consists of a professional team with an average of over 10 year of expertise in the distribution of electronic components. Based in Hongkong, we have already established firm and mutual-benefit business relationships with customers from,Europe,America and south Asia,supplying obsolete and hard-to-find components to meet their specific needs.

With the principle of “Quality Parts,Customers Priority,Honest Operation,and Considerate Service”,our business mainly focus on the distribution of electronic components. Line cards we deal with include Microchip,ALPS,ROHM,Xilinx,Pulse,ON,Everlight and Freescale. Main products comprise IC,Modules,Potentiometer,IC Socket,Relay,Connector.Our parts cover such applications as commercial,industrial, and automotives areas.

We are looking forward to setting up business relationship with you and hope to provide you with the best service and solution. Let us make a better world for our industry!



## Contact us

Tel: +86-755-8981 8866 Fax: +86-755-8427 6832

Email & Skype: info@chipsmall.com Web: www.chipsmall.com

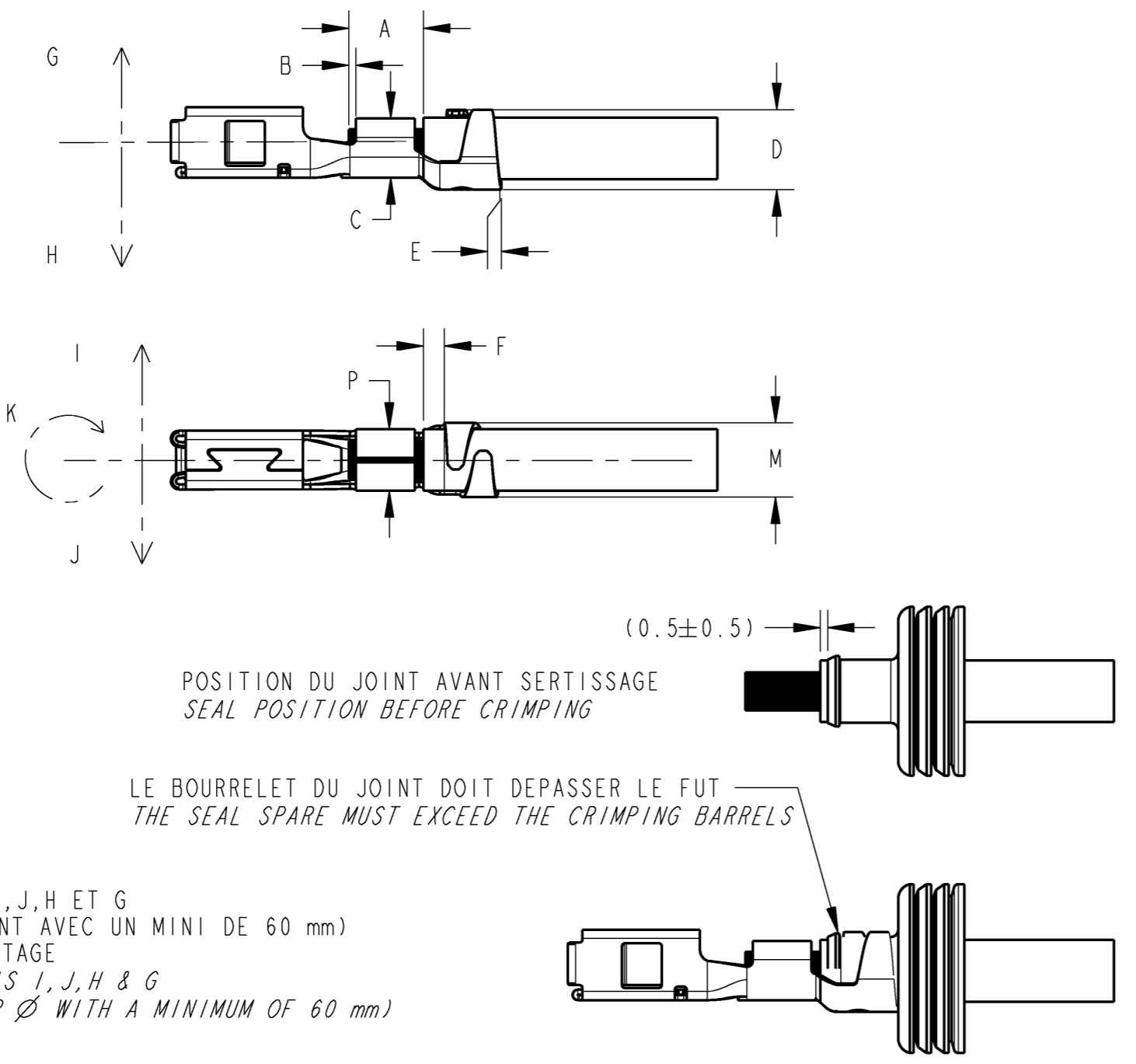
Address: A1208, Overseas Decoration Building, #122 Zhenhua RD., Futian, Shenzhen, China



PARAMETRES DE SERTISSAGE  
 CRIMPING PARAMETERS

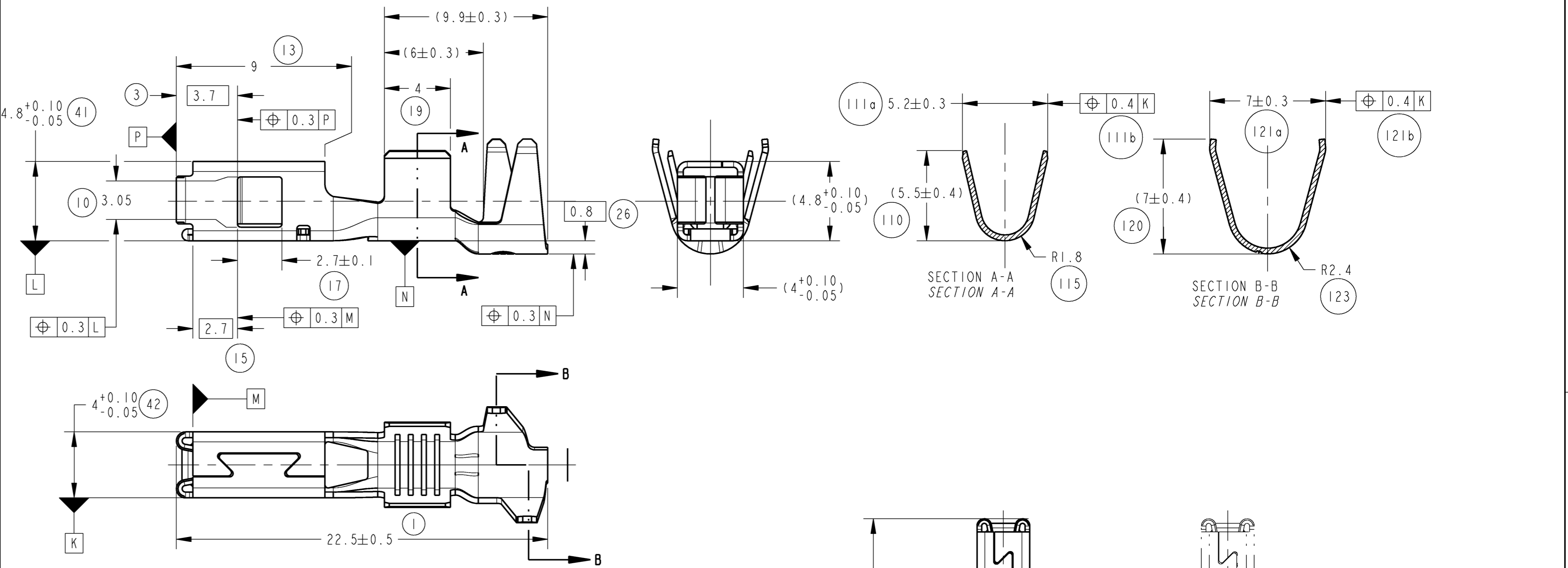
SERTISSAGE DU CONDUCTEUR CONDUCTOR CRIMPING					FRETTAGE DE L'ISOLANT (PARAMETRES THEORIQUES A VALIDER PAR LE CABLEUR) INSULATION CRIMPING (THEORETICAL PARAMETERS, MUST BE VALIDATE BY HARNESS MAKER)						
DEVELOPPE : 12.4 mm LAYOUT EPAISSEUR METAL : 0.35 mm METAL THICKNESS					DEVELOPPE : 16.2 mm LAYOUT EPAISSEUR METAL : 0.35 mm METAL THICKNESS						
					SANS JOINT WITHOUT SEAL		AVEC JOINT WITH SEAL				
SECTION FIL WIRE SECTION	REELLE REAL	LARGEUR SERTISSAGE CRIMPED WIDTH P ± 0.1	HAUTEUR SERTISSAGE CRIMPED HEIGHT C ± 0.05	RESISTANCE EN TRACTION PULLING FORCE	DEFINITION DU FIL WIRE DEFINITION	Ø DU FIL WIRE Ø	SURFACE A FRETTER AREA TO CRIMP	LARGEUR SERTISSAGE CRIMPED WIDTH M ± 0.2	HAUTEUR SERTISSAGE CRIMPED HEIGHT D ± 0.05	LARGEUR SERTISSAGE CRIMPED WIDTH M ± 0.2	HAUTEUR SERTISSAGE CRIMPED HEIGHT D ± 0.05
2.5	2.62	3.60	2.00	250 N	2.5 1D	2.80	6.16	4.60	3.30	5.20	4.70
3	3.18	3.60	2.05	280 N	2.5 1R	2.80	6.16	4.60	3.30	5.20	4.70
4	3.96	3.60	2.15	320 N	3 1R	3.18	8.81	4.60	3.80	5.20	5.05
					4 1D	4.20	9.62	4.60	3.90	5.20	5.20
					4 1R	4.20	11.34	4.60	4.20	5.20	5.30

CARACTERISTIQUES A VERIFIER CHARACTERISTICS TO CHECK	VALEUR VALUE	REPÈRE ITEM
FLEXION VERS LE HAUT/BAS UP/DOWN BENDING	3° MAXI	G-H
TORSION TWIST	5° MAXI	K
DEFORMATION DANS L'AXE AXIAL DEFORMATION	3° MAXI	I-J
LONGUEUR DE DENUDAGE STRIPPING LENGTH	5.5 MAXI	A
DEPASSEMENT DU CUIVRE CONDUCTOR EXCESS	0.6±0.5	B
DEPASSEMENT DE L'ISOLANT INSULATION EXCESS	(0.8)	F
TEMOIN DE DECOUPE CUTTING BURR	0.5 MAXI	E

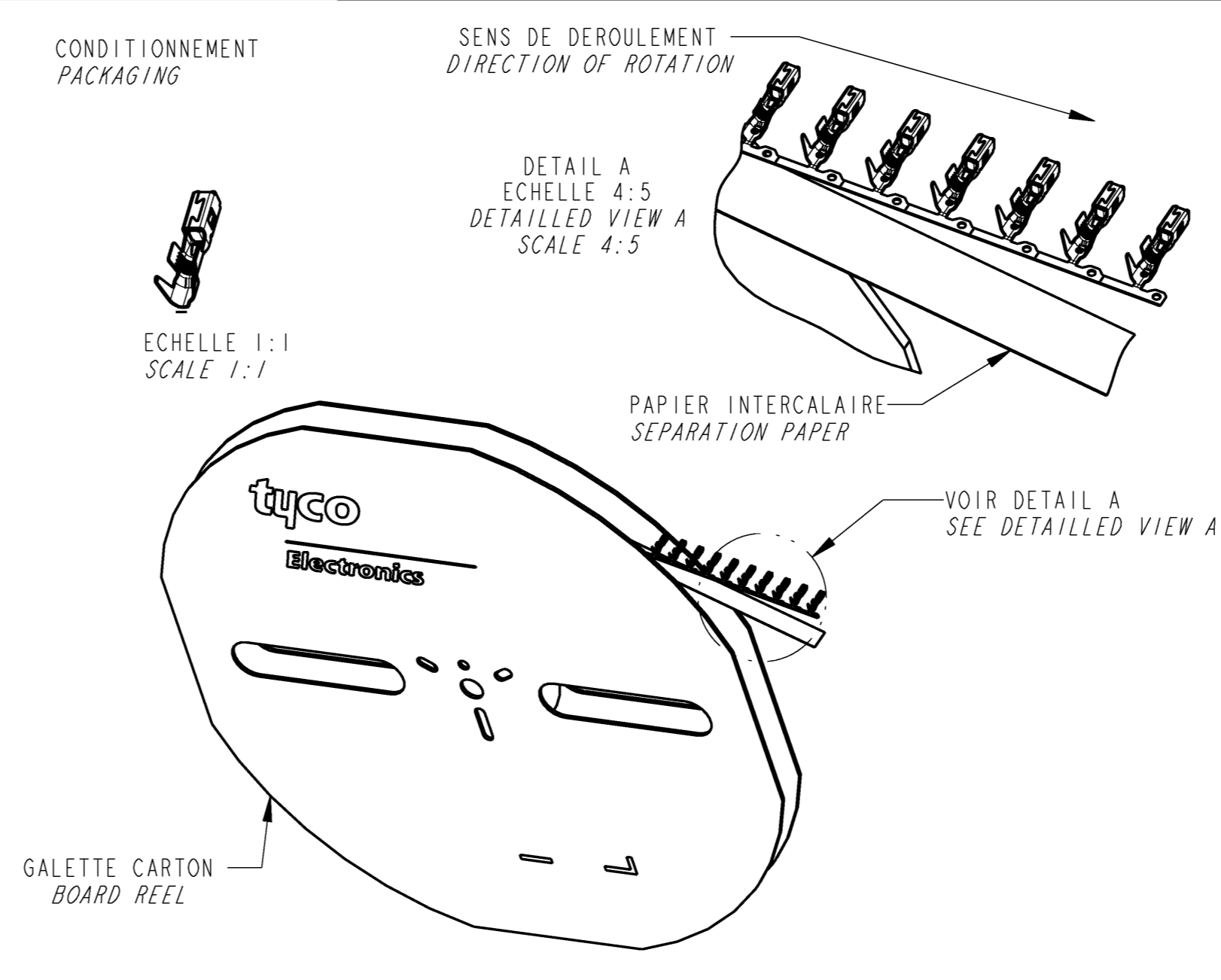
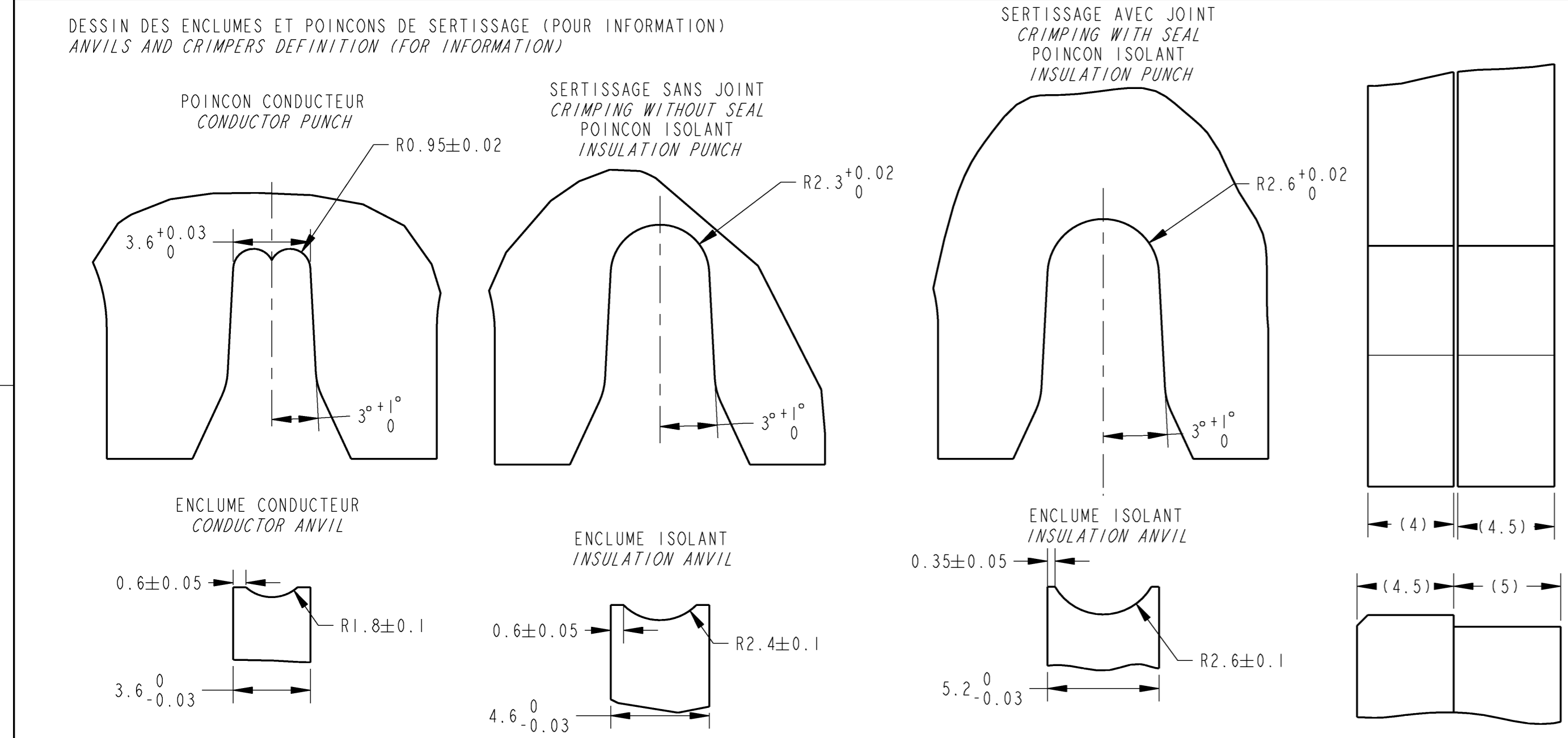
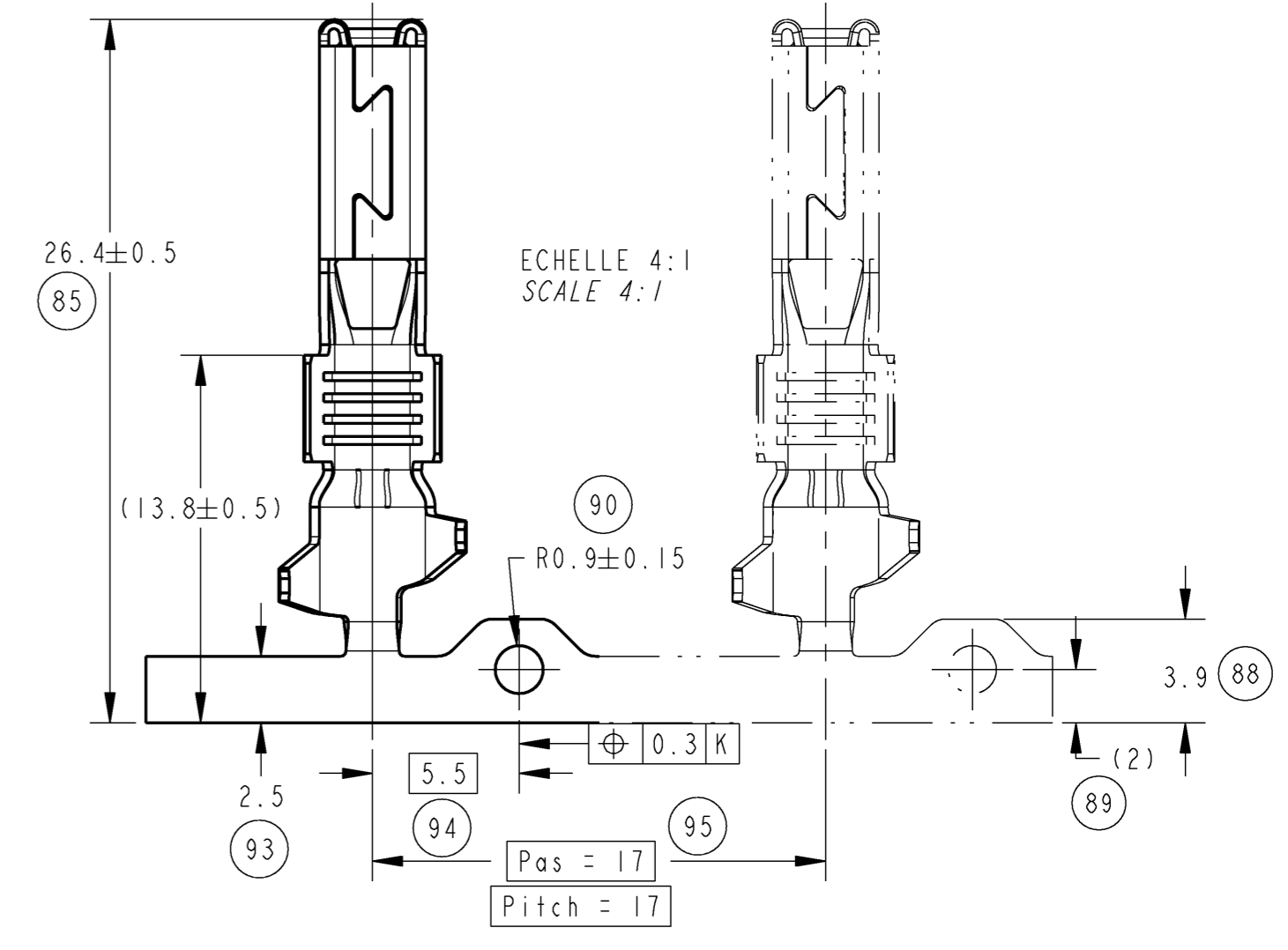


TENUE AU PLIAGE DU SERTISSAGE ISOLANT  
 BENDING RESISTANCE OF THE INSULATION CRIMPING

TENUE DE L'ISOLANT APRES 2 PLIAGES A 45° SELON LES AXES I, J, H ET G  
 (ESSAI EFFECTUE A UNE DISTANCE EGALE A 20 FOIS LE Ø ISOLANT AVEC UN MINI DE 60 mm)  
 L'ISOLANT NE DOIT PAS AVOIR GLISSE HORS DES AILES DE FRETTAGE  
 INSULATION RETENTION AFTER 2 BENDINGS AT 45 DEGREES ON AXIS I, J, H & G  
 (TEST CARRIED OUT AT A DISTANCE OF 20 TIMES THE INSULATOR Ø WITH A MINIMUM OF 60 mm)  
 INSULATION MAY NOT HAVE SLIPPED OUT OF INSULATION BARREL



REFERENCE TE TE PART NUMBER	DESIGNATION DESIGNATION	MATIERE MATERIAL	PROTECTION FINITION
1544555-1	CLIP 2.8 NGP 2.8 NGP RECEPTACLE (SECTION : 2.5 A 4 mm <sup>2</sup> )	Cu Mg P	PRE ETAME PRE TINNED SnAg 1 TO 3 µm
967608-1	JOINT UNIFILAIRE SINGLE WIRE SEAL	SILICONE SILICONE	-



THIS DRAWING IS UNPUBLISHED. RELEASED FOR PUBLICATION LIBRE A LA DIFFUSION 2005 BY TYCO ELECTRONICS CORPORATION. ALL RIGHTS RESERVED.		OWN / PROPRIETÉ: 24JUL2007 L. CORONELLI CLK / VERIFIEE: 24JUL2007 P. FLORES		TYCO ELECTRONICS France SAS BP 39, 95301 CERGY-PONTOISE Cedex	
DIMENSIONS: mm TOLERANCES UNLESS OTHERWISE SPECIFIED (SUIVI NB DE DECIMALES): 1-PLC/DEC: ±0.2 2-PLC/DEC: ±0.1 3-PLC/DEC: ±0.05 4-PLC/DEC: ±0.02 ANGLES: 45°		APVD / APPROVE: 24JUL2007 J. DABIE PRODUCT SPEC. PRODUIT: - APPLICATION SPEC. APPLICATION: -		NAME / TITRE: CLIP 2.8 mm NGP 2.8 mm NGP RECEPTACLE (SECTION : 2.5 A (TO) 4 mm <sup>2</sup> )	
MATERIAL / MATIERE: VOIR TABLEAU SEE TABLE FINISH / FINITION: VOIR TABLEAU SEE TABLE		WEIGHT / MASSE APPROX.: 0.0007 kg CUSTOMER DRAWING / PLAN CLIENT: -		SIZE / FORMAT: A1 CAGE CODE / DRAWING NO.: 00779 INVENTORY FOUR REFERENCE: 1544555	