



Chipsmall Limited consists of a professional team with an average of over 10 year of expertise in the distribution of electronic components. Based in Hongkong, we have already established firm and mutual-benefit business relationships with customers from,Europe,America and south Asia,supplying obsolete and hard-to-find components to meet their specific needs.

With the principle of "Quality Parts,Customers Priority,Honest Operation,and Considerate Service",our business mainly focus on the distribution of electronic components. Line cards we deal with include Microchip,ALPS,ROHM,Xilinx,Pulse,ON,Everlight and Freescale. Main products comprise IC,Modules,Potentiometer,IC Socket,Relay,Connector.Our parts cover such applications as commercial,industrial, and automotives areas.

We are looking forward to setting up business relationship with you and hope to provide you with the best service and solution. Let us make a better world for our industry!



Contact us

Tel: +86-755-8981 8866 Fax: +86-755-8427 6832

Email & Skype: info@chipsmall.com Web: www.chipsmall.com

Address: A1208, Overseas Decoration Building, #122 Zhenhua RD., Futian, Shenzhen, China



THIS DRAWING IS UNPUBLISHED.

RELEASED FOR PUBLICATION

© COPYRIGHT - By -

ALL RIGHTS RESERVED.

LOC FT DIST 0

REVISIONS

P	LTR	DESCRIPTION	DATE	DWN	APVD
P		REVISED PER ECO-11-004917	11MAR11	RK	HMR

MATERIALS:

HOUSING: POLYAMIDE, BLACK, UL94V-0.

TERMINALS: COPPER ALLOY, TIN PLATE.

SCREWS: ZINC PLATED, STEEL WITH CLEAR CHROMATE.

ELECTRICAL:

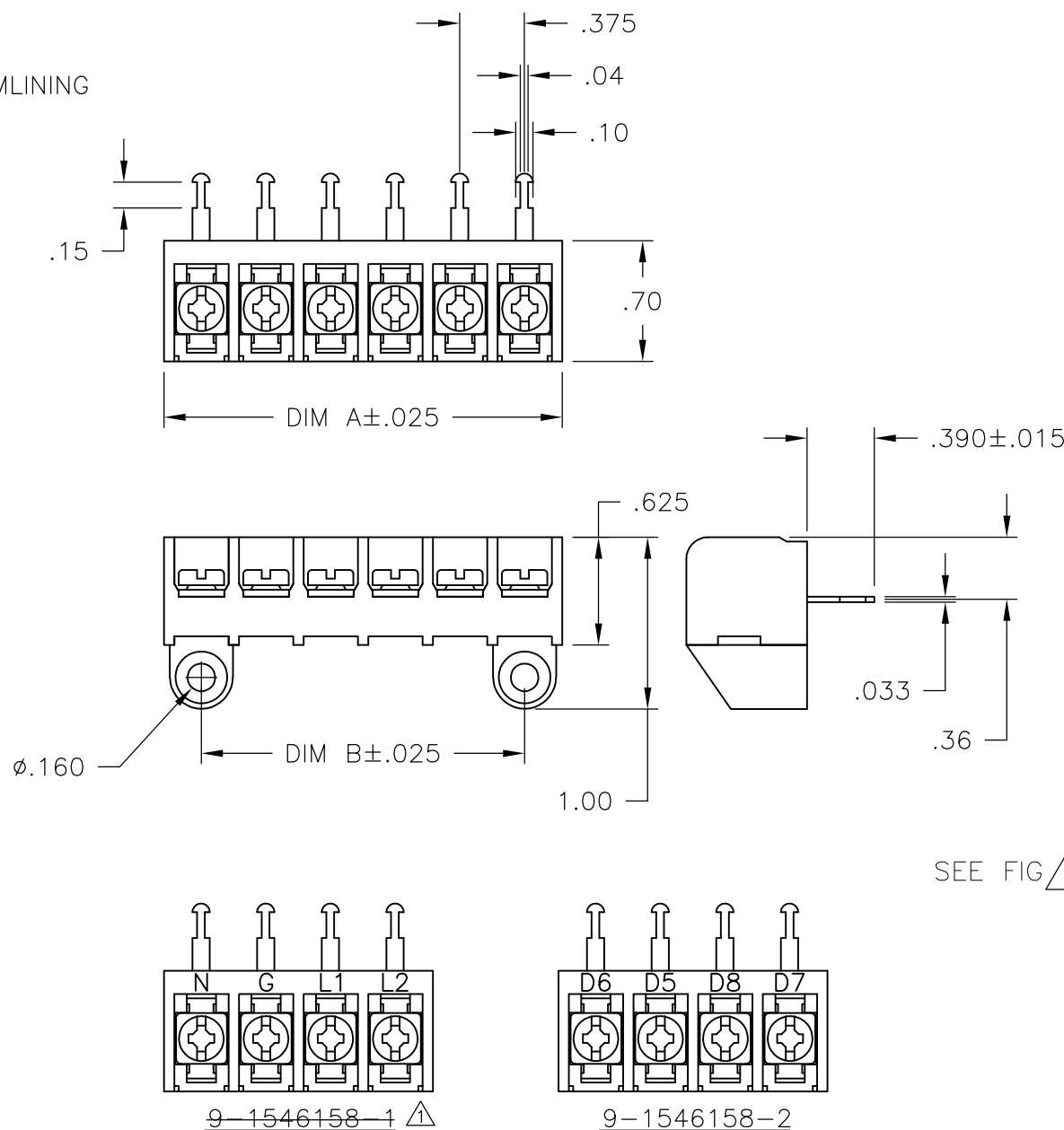
RATING: 25A, 300V.

WIRE RANGE: 12-22 AWG.

MECHANICAL:

MAXIMUM TORQUE RATING: 7 IN-LBS.

1 OBSOLETE PARTS: OBSOLETE CIS STREAMLINING PER D.RENAUD/D.SINISI

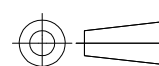


SEE FIG 1 SEE FIG 1 OBSOLETE

10.875	11.311	30	6STR-30-006	1546816-2
10.500	10.936	29	6STR-29-006	1546816-1
10.125	10.561	28	6STR-28-006	2-1546174-0
9.750	10.186	27	6STR-27-006	1-1546174-9
9.375	9.811	26	6STR-26-006	1-1546174-8
9.000	9.436	25	6STR-25-006	1-1546174-7
8.625	9.061	24	6STR-24-006	1-1546174-6
8.250	8.686	23	6STR-23-006	1-1546174-5
7.875	8.311	22	6STR-22-006	1-1546174-4
7.500	7.936	21	6STR-21-006	1-1546174-3
7.125	7.561	20	6STR-20-006	1-1546174-2
6.750	7.186	19	6STR-19-006	1-1546174-1
6.375	6.811	18	6STR-18-006	1-1546174-0
6.000	6.436	17	6STR-17-006	1546174-9
5.625	6.061	16	6STR-16-006	1546174-8
5.250	5.686	15	6STR-15-006	1546174-7
4.875	5.311	14	6STR-14-006	1546174-6
4.500	4.936	13	6STR-13-006	1546174-1
4.125	4.561	12	6STR-12-006	1546174-5
3.750	4.186	11	6STR-11-006	1546174-4
3.375	3.811	10	6STR-10-006	1546174-3
3.000	3.436	9	6STR-09-006	1546174-2
2.625	3.061	8	6STR-08-006	9-1546158-7
2.250	2.686	7	6STR-07-006	9-1546158-5
1.875	2.311	6	6STR-06-006	6-1437654-7
1.500	1.936	5	6STR-05-006	9-1546158-3
1.125	1.561	4	6STR-04-392	9-1546158-2
1.125	1.561	4	6STR-04-263	9-1546158-1
1.125	1.561	4	6STR-04-006	6-1437654-1
.750	1.186	3	6STR-03-006	5-1437654-6
.375	.811	2	6STR-02-006	5-1437654-3
DIM. "B"	DIM. "A"	NO. OF POS.	CATALOG NUMBER	PART NO.

THIS DRAWING IS A CONTROLLED DOCUMENT.

DIMENSIONS: INCHES



TOLERANCES UNLESS OTHERWISE SPECIFIED:	
0 PLC	± -
1 PLC	± -
2 PLC	± .02
3 PLC	± .010
4 PLC	± -
ANGLES	± 1°
FINISH	-

MATERIAL -

DWN	S SCHLEGEL	8/5/05
CHK	S YODER	8/5/05
APVD	S YODER	8/5/05
PRODUCT SPEC	-	-
APPLICATION SPEC	-	-
WEIGHT	-	-
CUSTOMER DRAWING		



NAME				
6STR-XX-006				
SIZE	CAGE CODE	DRAWING NO	RESTRICTED TO	
A3	00779	C-5-1437654-3	-	
SCALE NTS			SHEET 1 OF 1	REV P