



Chipsmall Limited consists of a professional team with an average of over 10 year of expertise in the distribution of electronic components. Based in Hongkong, we have already established firm and mutual-benefit business relationships with customers from,Europe,America and south Asia,supplying obsolete and hard-to-find components to meet their specific needs.

With the principle of “Quality Parts,Customers Priority,Honest Operation,and Considerate Service”,our business mainly focus on the distribution of electronic components. Line cards we deal with include Microchip,ALPS,ROHM,Xilinx,Pulse,ON,Everlight and Freescale. Main products comprise IC,Modules,Potentiometer,IC Socket,Relay,Connector.Our parts cover such applications as commercial,industrial, and automotives areas.

We are looking forward to setting up business relationship with you and hope to provide you with the best service and solution. Let us make a better world for our industry!



Contact us

Tel: +86-755-8981 8866 Fax: +86-755-8427 6832

Email & Skype: info@chipsmall.com Web: www.chipsmall.com

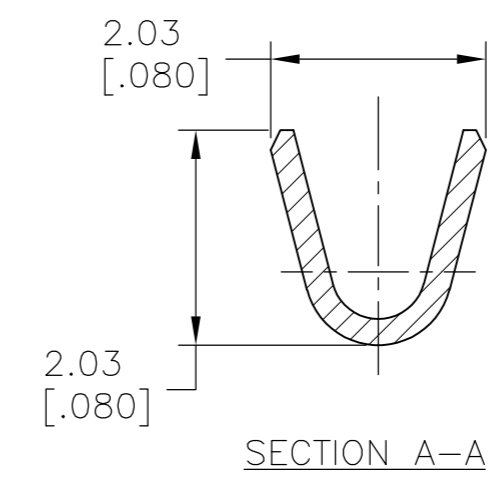
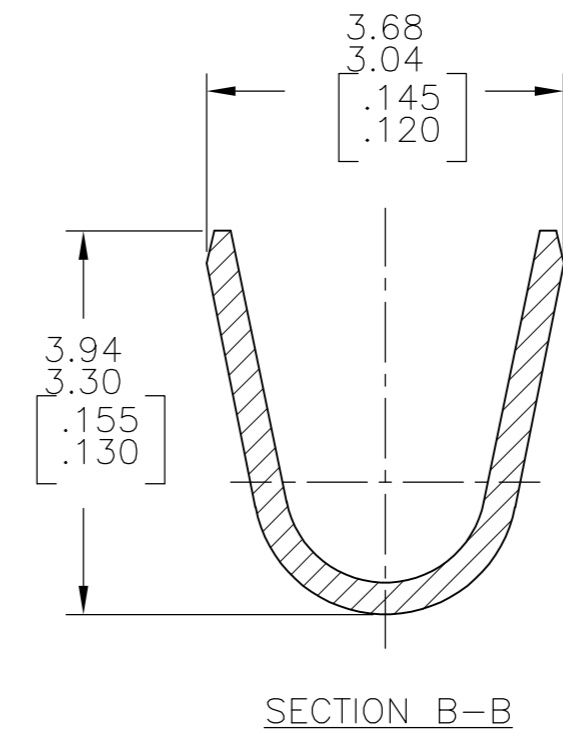
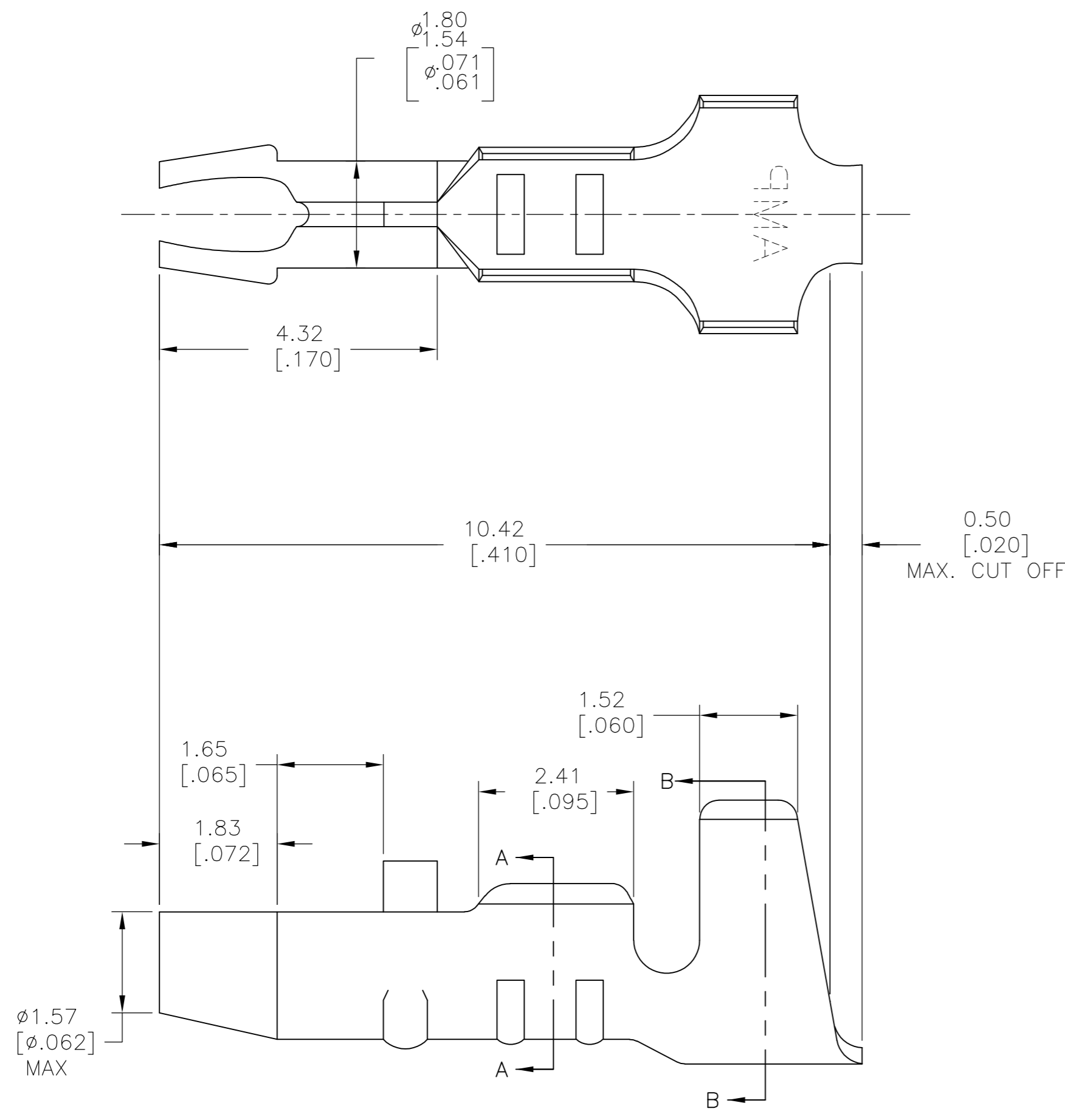
Address: A1208, Overseas Decoration Building, #122 Zhenhua RD., Futian, Shenzhen, China



THIS DRAWING IS UNPUBLISHED. RELEASED FOR PUBLICATION
 © COPYRIGHT - By - ALL RIGHTS RESERVED.

LOC		DIST		REVISIONS			
P	LTR	DESCRIPTION		DATE	DWN	APVD	
	C1	REDRAWN PER ECR-15-001205		29JAN2015	NK	CJ	

- CONNECTS #24-#20 AWG STRANDED WIRE.
- INSULATION $\phi 1.52-\phi 2.79$ [.060-.110].
- TO BE SOLDERED INTO A 1.60 [.063] THK. PC BOARD WITH A 1.90 [.075] 1.68 [.066] HOLE DIA.



SUPERSEDED BY 154645-2	PRE TIN	BRASS	154645-4
OBSOLETE	POST TIN OVER NICKEL	PHOS BRZE.	154645-3
OBSOLETE	POST TIN OVER NICKEL	BRASS	154645-2
OBSOLETE	NONE	BRASS	154645-1
	FINISH	MATERIAL	PART NUMBER

THIS DRAWING IS A CONTROLLED DOCUMENT.		DWN	29JAN2015	TE Connectivity AMP-IN TERMINAL	
		CHK	29JAN2015		
		APVD	29JAN2015		
		PRODUCT SPEC			
DIMENSIONS: mm [INCHES]		TOLERANCES UNLESS OTHERWISE SPECIFIED:		NAME	
0 PLC ± - 1 PLC ± - 2 PLC ± 0.25 [.010] 3 PLC ± - 4 PLC ± - ANGLES ± -		FINISH		SIZE	
WIRE RANGE 24-20		MATERIAL SEE TABLE		CAGE CODE	
		FINISH SEE TABLE		DRAWING NO	
				RESTRICTED TO	
		WEIGHT -		SCALE 14:1	
		CUSTOMER DRAWING		SHEET 1 OF 1	
				REV C1	