



Chipsmall Limited consists of a professional team with an average of over 10 year of expertise in the distribution of electronic components. Based in Hongkong, we have already established firm and mutual-benefit business relationships with customers from,Europe,America and south Asia,supplying obsolete and hard-to-find components to meet their specific needs.

With the principle of "Quality Parts,Customers Priority,Honest Operation,and Considerate Service",our business mainly focus on the distribution of electronic components. Line cards we deal with include Microchip,ALPS,ROHM,Xilinx,Pulse,ON,Everlight and Freescale. Main products comprise IC,Modules,Potentiometer,IC Socket,Relay,Connector.Our parts cover such applications as commercial,industrial, and automotives areas.

We are looking forward to setting up business relationship with you and hope to provide you with the best service and solution. Let us make a better world for our industry!



## Contact us

Tel: +86-755-8981 8866 Fax: +86-755-8427 6832

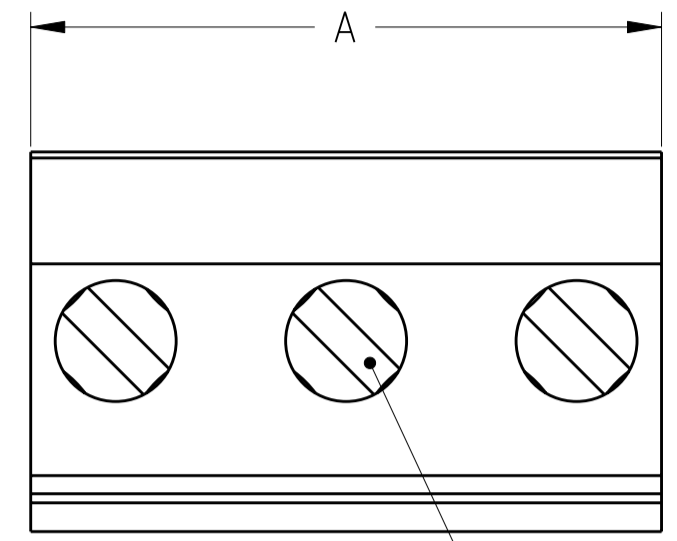
Email & Skype: info@chipsmall.com Web: www.chipsmall.com

Address: A1208, Overseas Decoration Building, #122 Zhenhua RD., Futian, Shenzhen, China



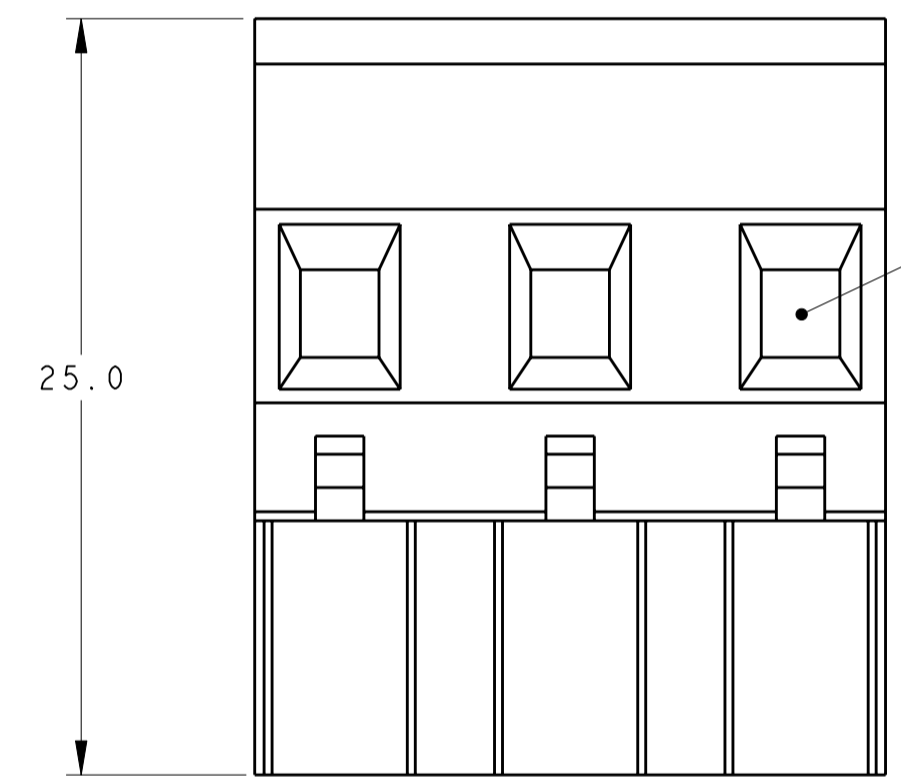
THIS DRAWING IS UNPUBLISHED. RELEASED FOR PUBLICATION 20  
 © COPYRIGHT 20 BY TYCO ELECTRONICS CORPORATION. ALL RIGHTS RESERVED.

LOC		DIST		REVISIONS			
P	LTR	DESCRIPTION	DATE	DWN	APVD		
	C	REVISED PER ECO-08-028953	21NOV2008	HMR	CR		

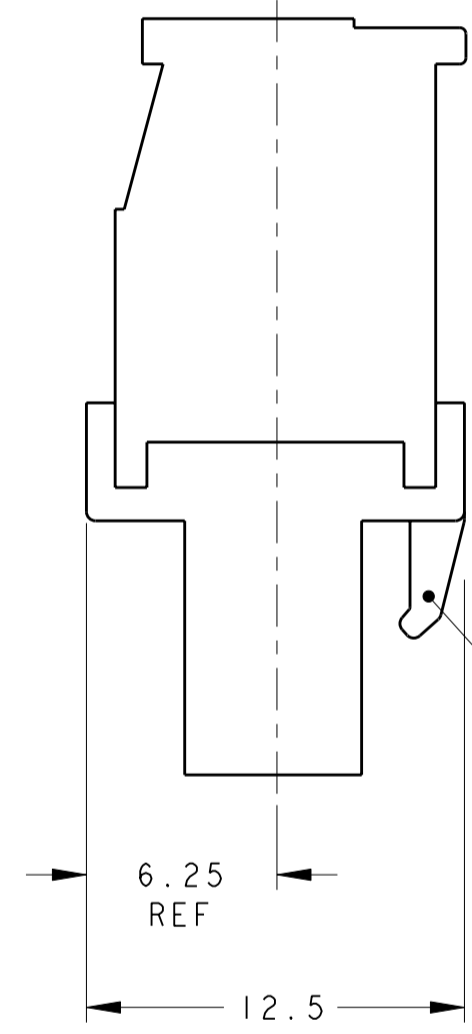


1. MATERIALS AND FINISH  
 HOUSING: PA 6-6, UL 94-V0, COLOR: BLACK.  
 CLAMP: BRASS, NICKEL PLATED.  
 CONTACT SPRING: PHOSPHOR BRONZE, TIN PLATED.  
 CLAMPING SCREW: M3, BRASS, NICKEL PLATED.
2. WIRE SIZE RANGE: 12-30 AWG.
3. INK MARKING: WHITE COLOR.

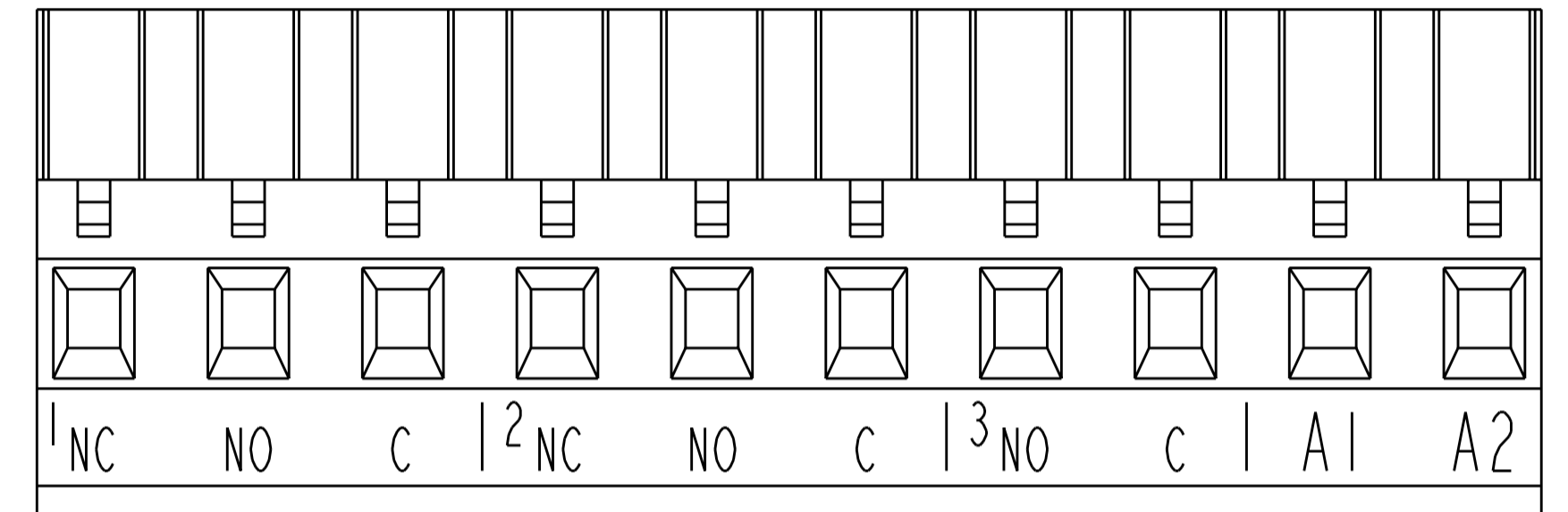
CLAMPING SCREW



WIRE ENTRY

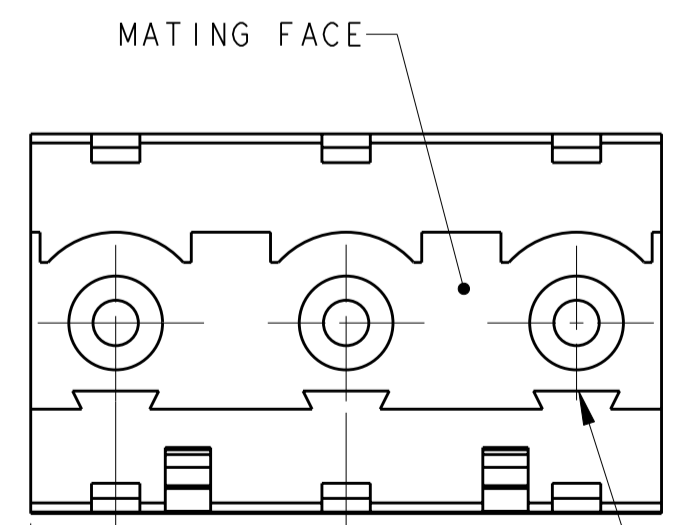


RETENTION LATCH



SEE DETAIL W  
 SCALE 3:1

SEE DETAIL Y	89.44	12	1-1546935-5
SEE DETAIL X	74.20	10	1-1546935-4
SEE DETAIL W	74.20	10	1-1546935-3
-	89.44	12	1-1546935-2
-	81.82	11	1-1546935-1
-	74.20	10	1-1546935-0
-	66.58	9	1546935-9
-	58.96	8	1546935-8
-	51.34	7	1546935-7
-	43.72	6	1546935-6
-	36.10	5	1546935-5
-	28.48	4	1546935-4
-	20.86	3	1546935-3
-	13.24	2	1546935-2
MARKING	A	NO OF POSN	PART NUMBER



MATING FACE

POLARIZATION KEY SLOT

2.81 REF TYP

7.62±0.08 TYP

THIS DRAWING IS A CONTROLLED DOCUMENT FOR TYCO ELECTRONICS CORPORATION. IT IS SUBJECT TO CHANGE AND THE CONTROLLING ENGINEERING ORGANIZATION SHOULD BE CONTACTED FOR THE LATEST REVISION.

DWN: S. WELDON 09JUL2004  
 CHK: C. RICHARD 12JUL2004  
 APVD: C. RICHARD 12JUL2004

Tyco Electronics  
 Harrisburg, PA 17105-3608

NAME: TERMINAL BLOCK VERTICAL PLUG  
 STACKING LEFT HAND  
 7.62mm PITCH

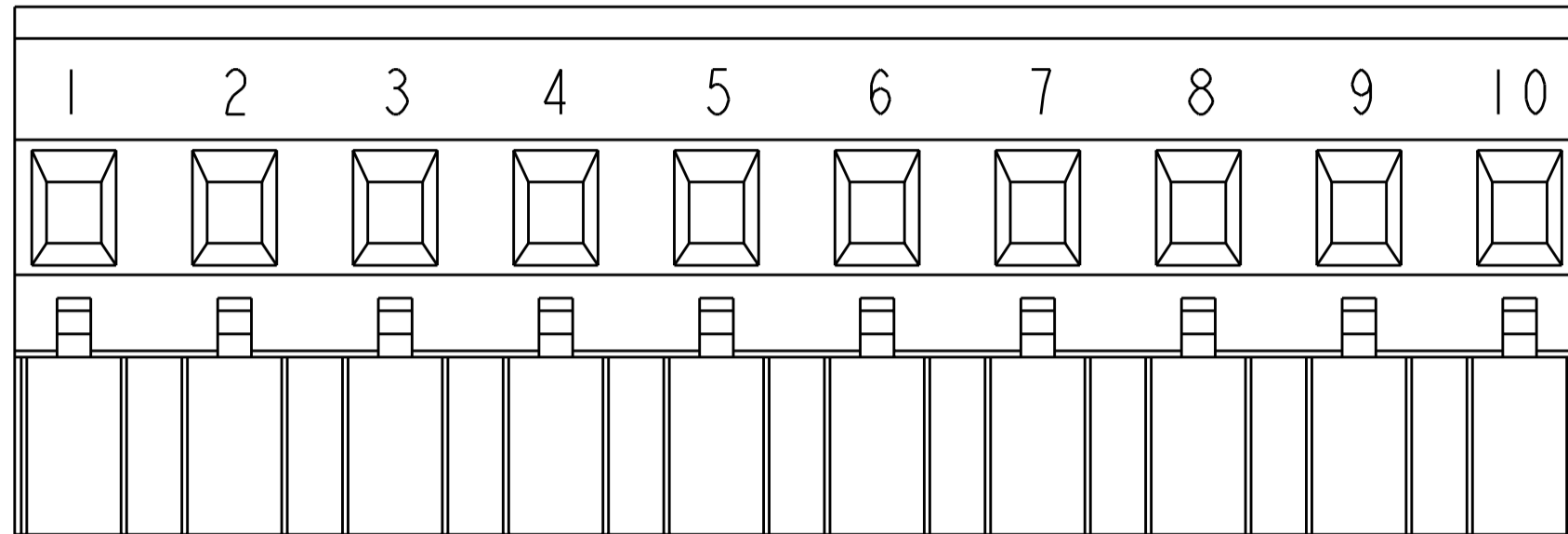
SIZE: A2 CAGE CODE: 00779 DRAWING NO: 1546935 RESTRICTED TO: -

MATERIAL: - DIMENSIONS: mm TOLERANCES UNLESS OTHERWISE SPECIFIED: 0 PLC ±.3, 1 PLC ±.25, 2 PLC ±.25, 3 PLC ±.25, 4 PLC ±.25 ANGLES ±2 FINISH: -

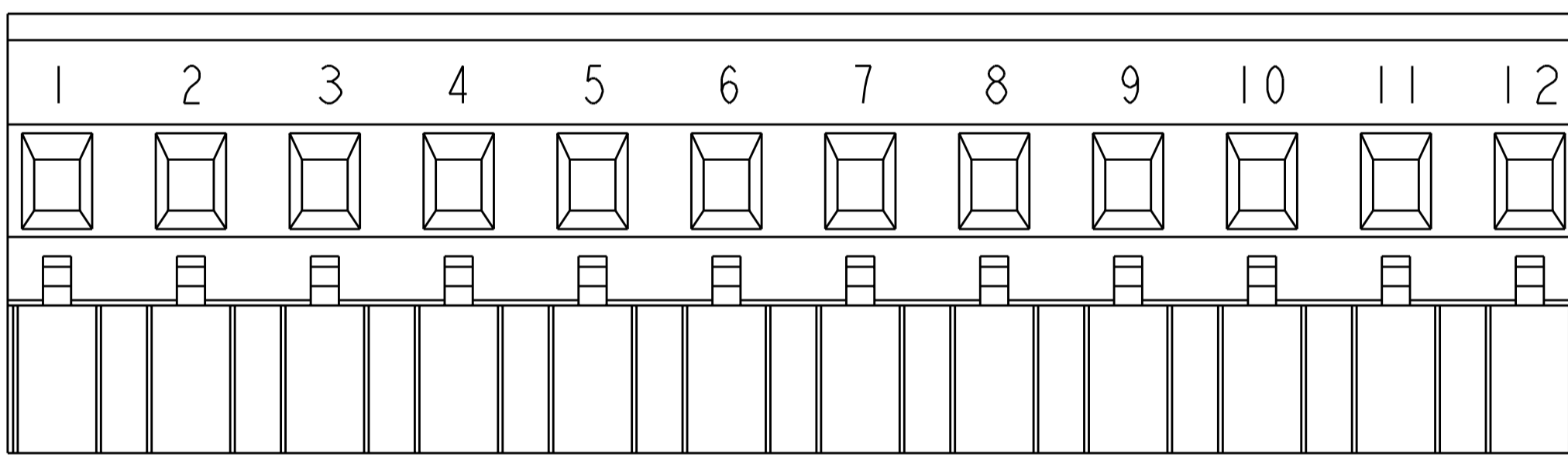
CUSTOMER DRAWING SCALE: 4:1 SHEET 1 OF 2 REV C

THIS DRAWING IS UNPUBLISHED. RELEASED FOR PUBLICATION 20  
 © COPYRIGHT 20 BY TYCO ELECTRONICS CORPORATION. ALL RIGHTS RESERVED.

LOC		DIST		REVISIONS			
P	LTR	DESCRIPTION	DATE	DWN	APVD		
		SEE SHEET 1					



DETAIL X  
SCALE 3:1



DETAIL Y  
SCALE 3:1

<small>THIS DRAWING IS A CONTROLLED DOCUMENT FOR TYCO ELECTRONICS CORPORATION          IT IS SUBJECT TO CHANGE AND THE CONTROLLING ENGINEERING ORGANIZATION          SHOULD BE CONTACTED FOR THE LATEST REVISION.</small>		DWN 09 JUL 2004 S. WELDON CHK 12 JUL 2004 C. RICHARD APVD 12 JUL 2004 C. RICHARD	Tyco Electronics Harrisburg, PA 17105-3608
DIMENSIONS: mm	TOLERANCES UNLESS OTHERWISE SPECIFIED: 0 PLC ±.3 1 PLC ±.3 2 PLC ±.25 3 PLC ±. 4 PLC ±. ANGLES ±2 FINISH	PRODUCT SPEC APPLICATION SPEC WEIGHT	NAME TERMINAL BLOCK VERTICAL PLUG STACKING LEFT HAND 7.62mm PITCH
MATERIAL -	CUSTOMER DRAWING	SIZE A2 CAGE CODE 00779 DRAWING NO. C-1546935	RESTRICTED TO -
		SCALE 4:1	SHEET 2 OF 2 REV B