



Chipsmall Limited consists of a professional team with an average of over 10 year of expertise in the distribution of electronic components. Based in Hongkong, we have already established firm and mutual-benefit business relationships with customers from,Europe,America and south Asia,supplying obsolete and hard-to-find components to meet their specific needs.

With the principle of “Quality Parts,Customers Priority,Honest Operation,and Considerate Service”,our business mainly focus on the distribution of electronic components. Line cards we deal with include Microchip,ALPS,ROHM,Xilinx,Pulse,ON,Everlight and Freescale. Main products comprise IC,Modules,Potentiometer,IC Socket,Relay,Connector.Our parts cover such applications as commercial,industrial, and automotives areas.

We are looking forward to setting up business relationship with you and hope to provide you with the best service and solution. Let us make a better world for our industry!



Contact us

Tel: +86-755-8981 8866 Fax: +86-755-8427 6832

Email & Skype: info@chipsmall.com Web: www.chipsmall.com

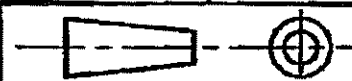
Address: A1208, Overseas Decoration Building, #122 Zhenhua RD., Futian, Shenzhen, China



1 OBSOLETE PARTS: OBSOLETE CIS STREAMLINING PER D.RENAUD/D.SINISI
 2 OBSOLETE

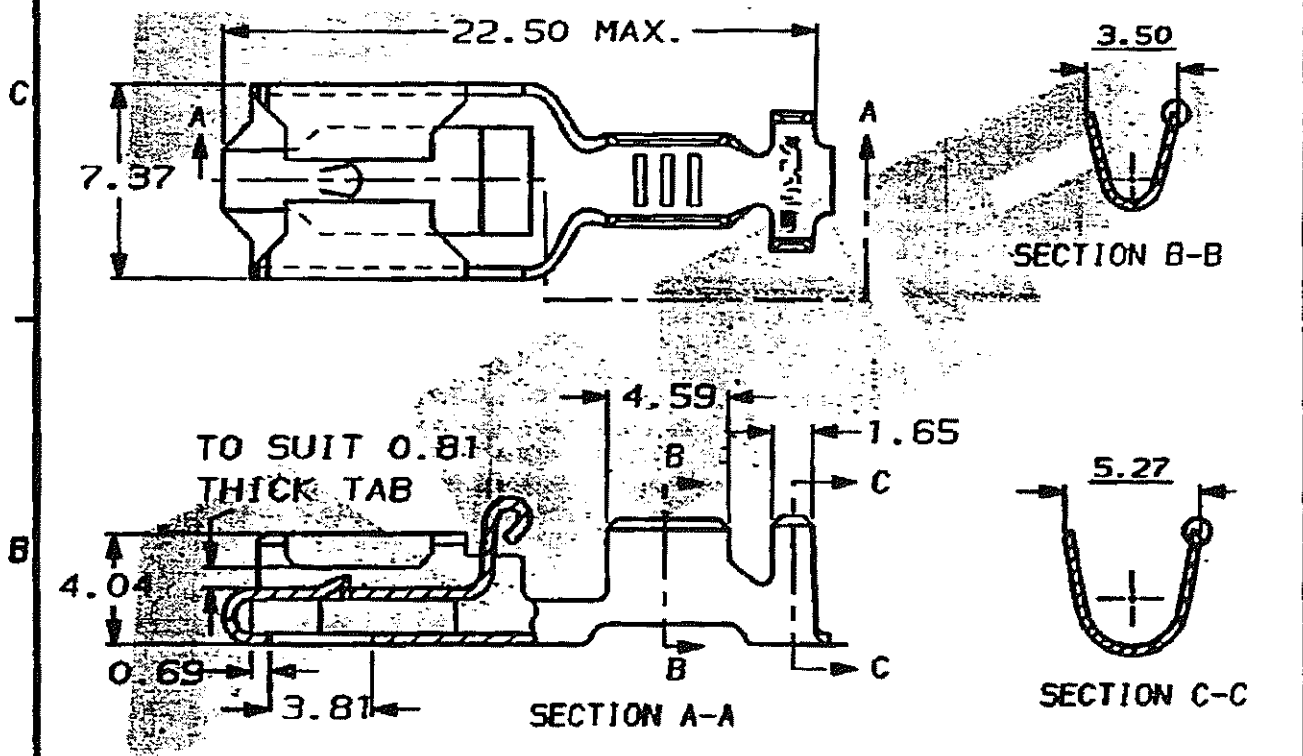
DO NOT SCALE

DIMENSIONS IN MM.



C.A.D. FILE CODE
S. C154718.AD

PART NUMBER	MATERIAL	FINISH	REELING	LOOSE PIECE (REF. ONLY)
154718-1	BRASS	NONE	STANDARD	341002-1
154718-2	PHOS. BRONZE	NONE	STANDARD	341002-2
154718-3	BRASS	TIN	STANDARD	341002-3
154718-4	PHOS. BRONZE	TIN	STANDARD	341002-4 2
1 154718-5	PHOS. BRONZE	NONE	STANDARD	341002-5
154718-6	BRASS	PRE-TIN	STANDARD	341002-6
154718-7	PHOS. BRONZE	PRE-TIN	STANDARD	341002-7
154718-8	BRASS	SILVER	STANDARD	341002-8
154718-9	BRASS	SILVER	STANDARD	341002-9
1-154718-0	BRASS	PRE-TIN	STANDARD	---
1-154718-1	BRASS	NONE	REV. REEL VERSION-1	---
1-154718-2	PHOS. BRONZE	NONE	REV. REEL VERSION-2	---
1-154718-3	PHOS. BRONZE	PRE-TIN	STANDARD	---
2 1-154718-4	BRASS	TIN	REV. REEL VERSION-3	---
1-154718-5	PHOS. BRONZE	TIN	REV. REEL VERSION-4	---



WIRE RANGE 0.7 TO 2.0mm² INSULATION RANGE 2.4 TO 3.2mm DIA.

CUSTOMER DWG FOR REFERENCE ONLY RELEASED FOR PUBLICATION ORIGINAL 1974

DR. D.A. BARRATT 27.11.91
 CH. D. TERRY APP. D.A. BARRATT

TE Connectivity

POSITIVE LOCK RECEPTACLE

AD2	REVISED PER ECO-11.005150	RK/HMR	28MAR11	SCALE	LOC	SIZE	DWG. No.	REV	SHEET
REV	ECN	APPROVED	DATE	4/1	E	A4	C154718	AD2	1/1