



Chipsmall Limited consists of a professional team with an average of over 10 year of expertise in the distribution of electronic components. Based in Hongkong, we have already established firm and mutual-benefit business relationships with customers from,Europe,America and south Asia,supplying obsolete and hard-to-find components to meet their specific needs.

With the principle of "Quality Parts,Customers Priority,Honest Operation,and Considerate Service",our business mainly focus on the distribution of electronic components. Line cards we deal with include Microchip,ALPS,ROHM,Xilinx,Pulse,ON,Everlight and Freescale. Main products comprise IC,Modules,Potentiometer,IC Socket,Relay,Connector.Our parts cover such applications as commercial,industrial, and automotives areas.

We are looking forward to setting up business relationship with you and hope to provide you with the best service and solution. Let us make a better world for our industry!



Contact us

Tel: +86-755-8981 8866 Fax: +86-755-8427 6832

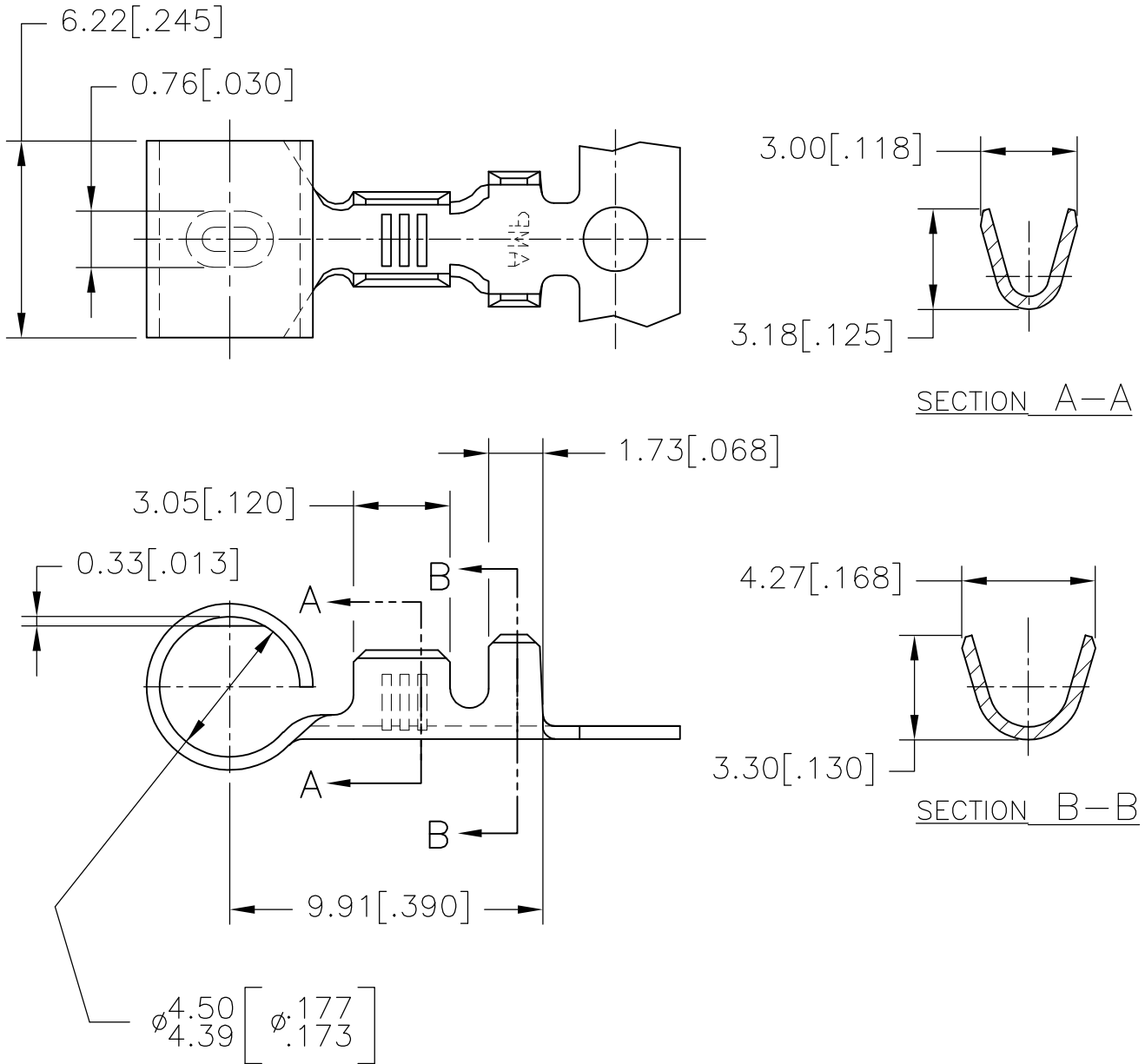
Email & Skype: info@chipsmall.com Web: www.chipsmall.com

Address: A1208, Overseas Decoration Building, #122 Zhenhua RD., Futian, Shenzhen, China



REVISIONS					
P	LTR	DESCRIPTION	DATE	DWN	APVD
	A	REVISED PER ECR-16-017978	04JAN2017	RS	TD

⚠ PRELIMINARY—NOT FOR PRODUCTION



THIS DRAWING IS UNPUBLISHED. ALL RIGHTS RESERVED. RELEASED FOR PUBLICATION

STOCK THK.	0.41 [.016] THK.
WIRE RANGE	INSUL RANGE
20-16	1.5-2.13 [.059-.084]

TIN PLATE	PHOS. BRONZE	154740-2	⚠
NONE	PHOS. BRONZE	154740-1	
FINISH	MATERIAL	PART NUMBER	

DIMENSIONS: mm [INCHES]	DWN	RAVI S	04JAN2017
	CHK	LI DAISY	04JAN2017
TOLERANCES UNLESS OTHERWISE SPECIFIED:	APVD	DING TIM	04JAN2017
	PRODUCT SPEC	-	
0 PLC ± - 1 PLC ± - 2 PLC ± 0.40 [.015] 3 PLC ± 0.40 [.015] 4 PLC ± - ANGLES ± -	APPLICATION SPEC	-	
	WEIGHT	-	

MATERIAL		SEE TABLE	FINISH		SEE TABLE	
TE TE Connectivity						
NAME .177 (4.50) DIA. RIGHT ANGLE PIN RECEPTACLE						
SIZE	CAGE CODE	DRAWING NO		RESTRICTED TO		
A4	00779	C-154740		-		
CUSTOMER DRAWING				SCALE	4:1	
SHEET			1	OF	1	
					REV	A