



Chipsmall Limited consists of a professional team with an average of over 10 year of expertise in the distribution of electronic components. Based in Hongkong, we have already established firm and mutual-benefit business relationships with customers from,Europe,America and south Asia,supplying obsolete and hard-to-find components to meet their specific needs.

With the principle of “Quality Parts,Customers Priority,Honest Operation,and Considerate Service”,our business mainly focus on the distribution of electronic components. Line cards we deal with include Microchip,ALPS,ROHM,Xilinx,Pulse,ON,Everlight and Freescale. Main products comprise IC,Modules,Potentiometer,IC Socket,Relay,Connector.Our parts cover such applications as commercial,industrial, and automotives areas.

We are looking forward to setting up business relationship with you and hope to provide you with the best service and solution. Let us make a better world for our industry!



## Contact us

Tel: +86-755-8981 8866 Fax: +86-755-8427 6832

Email & Skype: [info@chipsmall.com](mailto:info@chipsmall.com) Web: [www.chipsmall.com](http://www.chipsmall.com)

Address: A1208, Overseas Decoration Building, #122 Zhenhua RD., Futian, Shenzhen, China





PRODUCT NUMBER  
20020300-XXXXXXLF

20020300-□ □ □ □ □ □ □ L F

PITCH

C: 3.50 mm  
D: 3.81 mm(ON REQUEST ONLY)

POLES

02: 2 POLES  
03: 3 POLES


LF : DENOTED RoHS COMPATIBLE

1 : STANDARD PRODUCT  
W/ BOX PACKING

SCREW CODE

CODE	SCREW TYPE	AVAILABILITY
A	-/+	ON REQUEST ONLY
B	-	STANDARD

PROPERTY TABLE

PROPERTY TABLE			
FCI SERIES NAME		08-350	
PITCH (mm)		3.50	
VOLTAGE RATING (VAC)		300	
CURRENT RATING (A)		10	
APPLICABLE WIRE RANGE (AWG)		1-WIRE	16~24
		2-WIRE	24
WIRE CROSS SECTION (mm <sup>2</sup> )	SOLID	1-WIRE	1.5
		2-WIRE	0.5
	STRANDED	1-WIRE	1.5
		2-WIRE	0.2
OPENING CONTACT HOUSING(mm <sup>2</sup> )			1.6x1.6
WIRE STRIP LENGTH(mm)			5~6
TORQUE +/-10% (N-m/Lb-in)			0.19/1.7
SCREW			M2x0.4
WITHSTANDING VOLTAGE (kV)			1.6
OPERATING TEMP. (°C)			-40~+115
SOLDERING TEMP. (°C)			250±10 (5 sec.)
POLES AVAILABLE			02~03
SAFETY CERTIFICATE			

HOUSING CODE

CODE	COLOR	AVAILABILITY
1	GREEN(RAL 6018/T)	STANDARD
2	BLACK	ON REQUEST ONLY
3	GREY(RAL 7004/P)	ON REQUEST ONLY
4	BLUE(RAL 5015/A)	ON REQUEST ONLY

NOTES:

- MATERIALS  
1-1 HOUSING: THERMALPLASTIC RESIN, UL 94V-0 RATED.  
1-2 SCREW: STEEL, ZINC PLATED.  
1-3 CLAMP: COPPER ALLOY, NICKEL PLATED.  
1-4 TERMINAL: COPPER ALLOY, TIN PLATED.
- PRODUCT SPECIFICATION REFER TO FCI GS-12-625.
- PRODUCT PACKING SPECIFICATION REFER TO FCI GS-14-1394.
- FCI, SAFETY CERTIFICATE LOGO AND SERIES NAME TO BE SHOWN ON PRODUCT SURFACE.
- THE PRODUCTS WHERE THE PART NUMBER END IN "LF" MEET THE EUROPEAN UNION DIRECTIVE AND OTHER COUNTRY REGULATIONS AS DESCRIBED IN GS-22-008.
- RECOMMENDED SOLDERING PROCESS BY WAVE SOLDER.

mat'l. code				surface ASME Y14.5	tolerance ASME Y14.5	projection 	product family TERMINAL BLOCK
ltr	ecn no	dr	date	tolerances unless otherwise specified			title
A	T10-0138	WL	083110	angles	X.±0.5	MM	TERMINAL BLOCK FIXED SIGNAL PLUG, VERTICAL WIRE INLET
B	T10-0165	WL	101210	tolerances	X.X±0.3	INCH	
				X'±1"	X.XX±0.1	scale	
				dr	WENDY CHEN	081210	
				engr	JASON HSU	081210	
				chr	GARY HSIEH	081210	
				appd	JOSEPH HSIA	081210	
sheet index	revision sheet	B	B				FCI
		1	2				type CUSTOMER Drawing



Copyright FCI.



FCIconnect.com

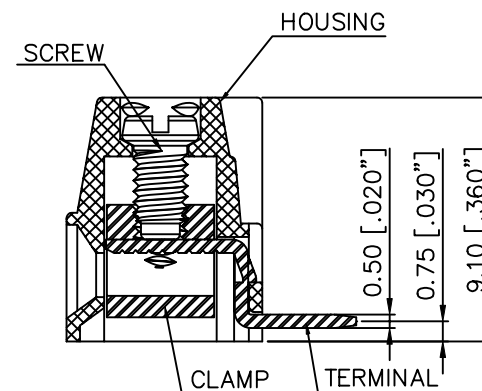
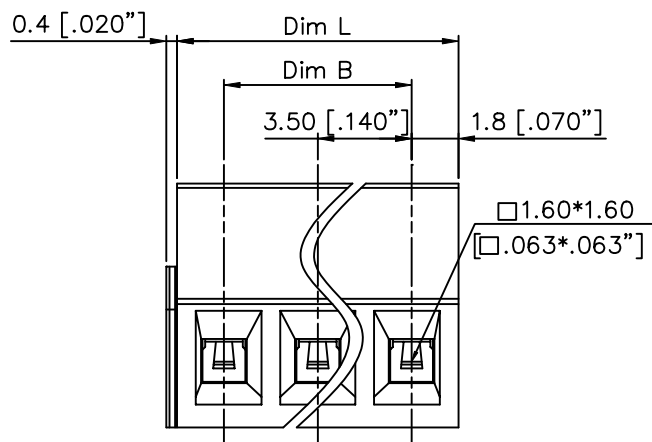
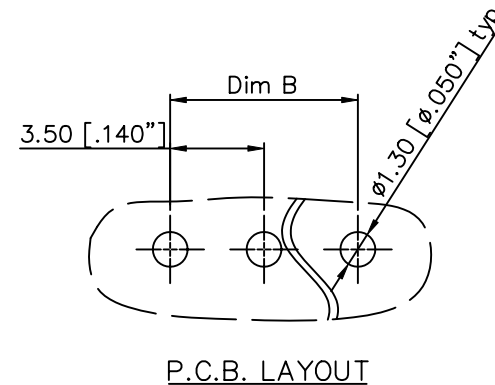
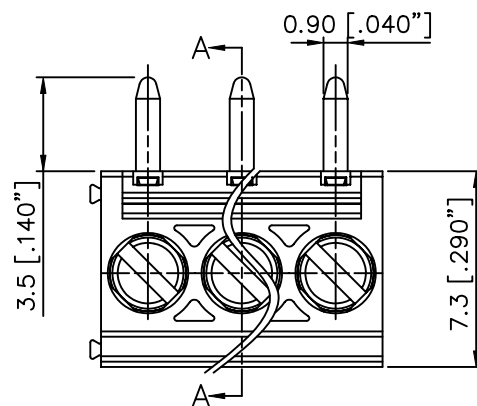


1 2

3

4

PRODUCT NUMBER	SERIES NAME	PITCH
20020300-CXXXXXXLF	08-350	3.50 mm



SECTION A-A

POLE	2	3
Dim L	7.00[.275"]	10.50[.413"]
Dim B	3.50[.138"]	7.00[.276"]
Tol.	$\pm 0.10[.004"]$	

mat'l. code				surface ASME Y14.5	tolerance ASME Y14.5	projection	product family TERMINAL BLOCK
ltr	ecn no	dr	date	tolerances unless otherwise specified			title
B				angles	X. $\pm 0.5$	MM	TERMINAL BLOCK
				inlet	X.X $\pm 0.3$	[INCH]	FIXED SIGNAL PLUG, VERTICAL WIRE INLET
				X $\pm 1^\circ$	X.XX $\pm 0.1$	scale	dwg no
		dr	WENDY CHEN	081210			sheet 2 of 2
		enr	JASON HSU	081210			size
		chr	GARY HSIEH	081210			A4
		appd	JOSEPH HSIA	081210			type
sheet index	revision sheet						CUSTOMER Drawing