



Chipsmall Limited consists of a professional team with an average of over 10 year of expertise in the distribution of electronic components. Based in Hongkong, we have already established firm and mutual-benefit business relationships with customers from,Europe,America and south Asia,supplying obsolete and hard-to-find components to meet their specific needs.

With the principle of “Quality Parts,Customers Priority,Honest Operation,and Considerate Service”,our business mainly focus on the distribution of electronic components. Line cards we deal with include Microchip,ALPS,ROHM,Xilinx,Pulse,ON,Everlight and Freescale. Main products comprise IC,Modules,Potentiometer,IC Socket,Relay,Connector.Our parts cover such applications as commercial,industrial, and automotives areas.

We are looking forward to setting up business relationship with you and hope to provide you with the best service and solution. Let us make a better world for our industry!



Contact us

Tel: +86-755-8981 8866 Fax: +86-755-8427 6832

Email & Skype: info@chipsmall.com Web: www.chipsmall.com

Address: A1208, Overseas Decoration Building, #122 Zhenhua RD., Futian, Shenzhen, China





z-QUAD SMALL FORM-FACTOR PLUGGABLE PLUS (zQSFP+ OR QSFP28) INTERCONNECT SYSTEM

Quick Reference Guide

te.com/products/QSFP

Introducing zQSFP+ Interconnect System

TE Connectivity's (TE) zQSFP+ interconnects offer an increased data rate of 28 Gbps in an industry standard, scalable design that allows for backwards compatibility with QSFP/QSFP+ cables and transceivers, providing a simple upgrade path from 10 Gbps to 28 Gbps. The complete portfolio of interconnects deliver a large range of simple and customizable design options to meet most customer requirements.

Features and Benefits

Increased Data Rates

- 2.5 times more throughput than traditional QSFP solutions
- Data transfer rates of 28 Gbps
- Supports 100 Gbps Ethernet (28 Gbps x 4), and 100 Gbps InfiniBand (IB) Enhanced Data Rate (EDR) requirements

Industry Standard and Customizable Design

- Industry standard interface
- Backwards compatible with QSFP/QSFP+ cables and transceivers
- Higher loss budget for optics and copper cables at 10 Gbps

Comprehensive Portfolio and Inventory

- Dual sourced product available through Molex, LLC.
- Features behind and through bezel cages with various lightpipe and heat sink options
- Well-stocked distribution channel

Improved EMI Performance

- Increased data rates make EMI protection more challenging
- Provide excellent EMI protection through 28 Gbps

Applications

Product Applications

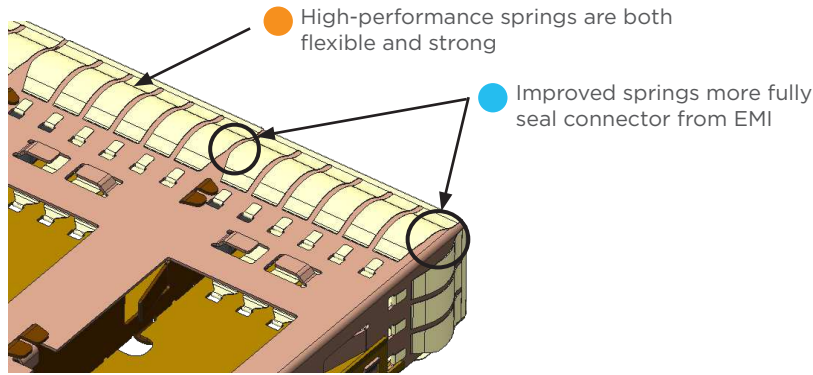
- Network Interface
- Switches
- Servers
- Routers
- Wireless Base Stations
- Test and Measurement Equipment

Applications by Protocol

- 100 Gigabit Ethernet
- 100 Gbps InfiniBand (IB) Enhanced Data Rate (EDR) requirements
- 128G Fibre Channel
- 25G/50G Consortium

Enhanced QSFP28 Cages

EMI Enhanced



Reference base part number 2170709 on page 7

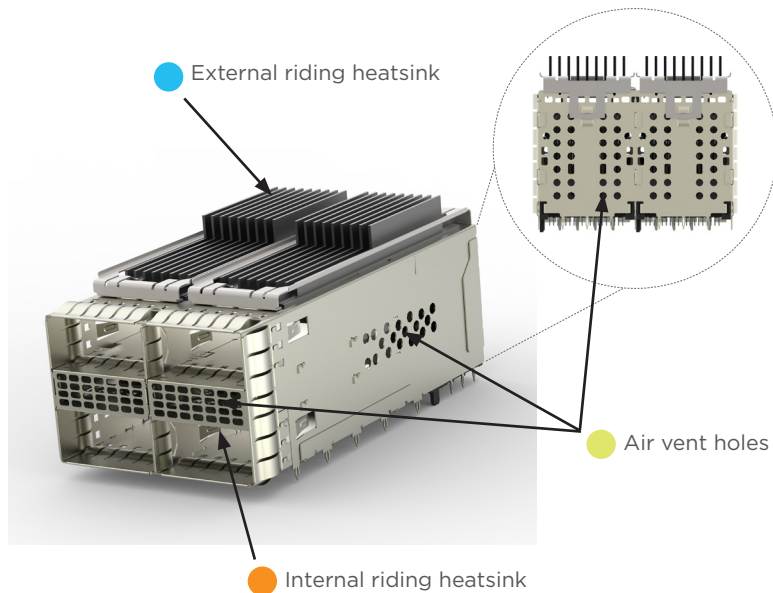
Lower Assembly Insertion Force

Enhanced zQSFP+ cages can help increase assembly throughput by providing a 55% reduction in force needed to insert the line card into the front bezel. The reduction in insertion force makes assembly easier, faster, and reduces the risk for damage which can lead to reduced EMI performance.

Improved EMI Performance

EMI sealing enhancements on these new cages provide 10 dB EMI performance improvement over current QSFP28 products.

Thermally Enhanced



Reference base part numbers 2299940, 2299870 and 2299924 on page 7

Lower Port Cooling

Internal riding heatsink in the separator plate area provides enhanced cooling to the lower ports and a 12-15°C improvement over standard stacked zQSFP+ cages.

Optimized Airflow

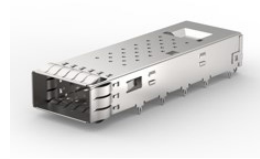
External riding heatsinks on the upper port are optimized for airflow direction (also available without heatsinks).

Air vent holes allow for air to pass through and exit out the sides and rear of the cage.

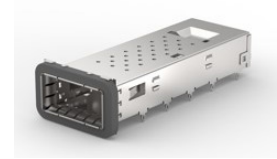
1xN Mechanical Options

Bezel Mount

- Behind bezel cages use a gasket applied by the customer to the cage or bezel sheet metal
- EMI spring versions and gasket versions share the same PCB footprint and bezel cutout
- TE offers low insertion force EMI springs to assist in assembly of high density products



Through Bezel with EMI Springs



Through Bezel with EMI Gasket



Behind Bezel (customer applies gasket)



Single



Dual



Quad

Lightpipe Options

- TE offers 1, 2 or 4 lightpipe options per port
- Standard lightpipes are designed to support up to 1.00mm height 0805 style LEDs
- Lightpipes are shipped with an organizer to prevent optical cross-talk

Heat Sink Styles

- TE offers SAN, LAN and Networking height heatsinks
- Custom heatsinks are available upon request
- Height is max height of assembly from surface of PCB



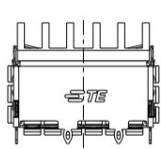
PCI (13.7mm height)



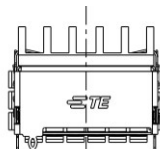
SAN (16.0mm height)



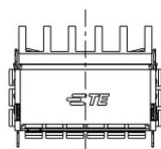
NET (23.0mm height)



2 rear EONs



1 rear EONs



0 rear EONs

Rear EONs

- Rear pins are used to improve EMI grounding and cage retention to the PCB
- TE offers all styles outlined in the SFF-8662 footprint
- Rear EONs will be dependent upon the customer's routing preference and technical specifications

2xN Mechanical Options

Bezel Mount

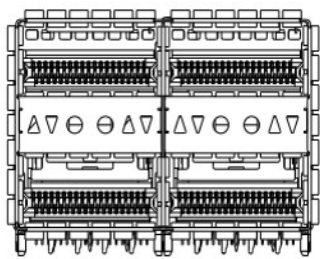
- Through bezel assemblies with EMI springs or EMI gaskets are available
- Custom gasketing options are available upon request



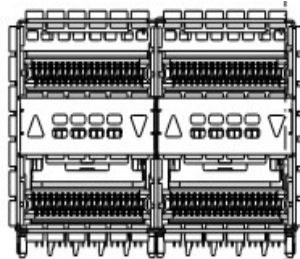
Through Bezel with EMI Springs



Through Bezel with EMI Gasket



Single (per port)



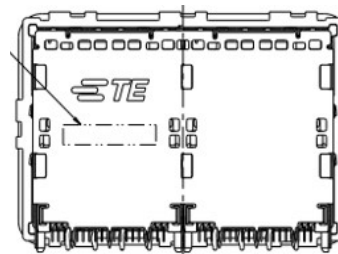
Dual (per port)

Lightpipe Options

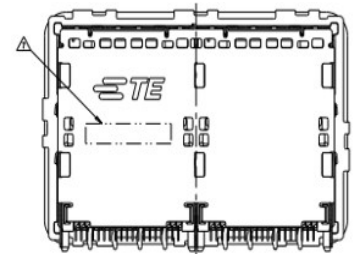
- TE offers zero, single and dual lightpipe options per port
- For higher lightpipe counts, the customer may add lightpipes underneath their PCB to indicate lower port activity
- The thermal footprint design offers 4x lightpipes assembled above the cage
- Lightpipes are designed to support up to 0.80mm height 0805 style LEDs

Rear EONs

- Rear pins are used to improve EMI grounding and cage retention to the PCB
- TE offers zero or three rear pins per port column
- Rear EONs will be dependent upon the customer's routing preference and technical specifications



3 rear EONs



0 rear EONs

Part Number Detail

Cages

Base Part Number	Ports	Cage Applications	EMI Suppression	Lightpipes Applied Per Port			Heat Sinks	Applied	
				Single	Dual	Quad		NET	PCI
2170754	1x1	Through Bezel	EMI Gasket	Yes	Yes	Yes	Yes	Yes	Yes
2170705	1x1	Through Bezel	EMI Springs	Yes	Yes	Yes	Yes	Yes	Yes
2170773	1x1	Through Bezel	EMI Springs	Yes	Yes	Yes	No	No	No
2170753	1x1	Through Bezel	EMI Gasket	No	No	No	Yes	Yes	Yes
2170752	1x1	Through Bezel	EMI Gasket	No	No	No	No	No	No
2170704	1x1	Through Bezel	EMI Springs	No	No	No	Yes	Yes	Yes
2170703	1x1	Through Bezel	EMI Springs	No	No	No	No	No	No
1551892	1x1	Behind Bezel	C	No	No	No	Yes	Yes	Yes
1551891	1x1	Behind Bezel	C	No	No	No	No	No	No
2170814	1x2	Through Bezel	EMI Gasket	Yes	Yes	Yes	Yes	Yes	Yes
2170813	1x2	Through Bezel	EMI Gasket	Yes	Yes	Yes	No	No	No
2170808	1x2	Through Bezel	EMI Springs	Yes	Yes	Yes	Yes	Yes	Yes
2170807	1x2	Through Bezel	EMI Springs	Yes	Yes	Yes	No	No	No
2170812	1x2	Through Bezel	EMI Gasket	No	No	No	Yes	Yes	Yes
2170811	1x2	Through Bezel	EMI Gasket	No	No	No	No	No	No
2170806	1x2	Through Bezel	EMI Springs	No	No	No	Yes	Yes	Yes
2170805	1x2	Through Bezel	EMI Springs	No	No	No	No	No	No
2227103	1x2	Behind Bezel	C	Yes	Yes	No	Yes	Yes	Yes
2227103	1x2	Behind Bezel	C	No	No	No	Yes	Yes	Yes
2227104	1x2	Behind Bezel	C	No	No	No	Open Top		
2170769	1x3	Through Bezel	EMI Gasket	Yes	Yes	Yes	Yes	Yes	Yes
2170740	1x3	Through Bezel	EMI Springs	Yes	Yes	Yes	Yes	Yes	Yes
2170739	1x3	Through Bezel	EMI Springs	Yes	Yes	Yes	No	No	No
2170768	1x3	Through Bezel	EMI Gasket	No	No	No	Yes	Yes	Yes
2170767	1x3	Through Bezel	EMI Gasket	No	No	No	No	No	No
2170738	1x3	Through Bezel	EMI Springs	No	No	No	Yes	Yes	Yes
2170737	1x3	Through Bezel	EMI Springs	No	No	No	No	No	No
2173239	1x3	Behind Bezel	C	No	No	No	Yes	Yes	Yes
2173238	1x3	Behind Bezel	C	No	No	No	Open Top		
2170785	1x4	Through Bezel	EMI Gasket	Yes	Yes	Yes	Yes	Yes	Yes
2170784	1x4	Through Bezel	EMI Gasket	Yes	Yes	Yes	No	No	No
2170747	1x4	Through Bezel	EMI Springs	Yes	Yes	Yes	Yes	Yes	Yes
2170746	1x4	Through Bezel	EMI Springs	Yes	Yes	Yes	No	No	No

Part Number 1551920-2: zQSFP+ Surface Mount Connector for use with all 1xN cages

Notes:

C = Customer Applied Gasket
 1xN cages: require a SMT connector to complete the assembly
 2xN cages: connectors and cages come as one integrated assembly
 All cages use EMI Plug 1888810-2

zQSFP+ (QSFP28) Interconnects

Cages (con't)

Base Part Number	Ports	Cage Applications	EMI Suppression	Lightpipes Applied Per Port			Heat Sinks	Applied		
				Single	Dual	Quad		NET	PCI	SAN
2170783	1x4	Through Bezel	EMI Gasket	No	No	No	Yes	Yes	Yes	
2170782	1x4	Through Bezel	EMI Gasket	No	No	No	No	No	No	
2170745	1x4	Through Bezel	EMI Springs	No	No	No	Yes	Yes	Yes	
2170744	1x4	Through Bezel	EMI Springs	No	No	No	No	No	No	
2227249	1x4	Behind Bezel	C	No	No	No	Yes	Yes	Yes	
2227250	1x4	Behind Bezel	C	No	No	No	Open Top			
2170790	1x4	Through Bezel	EMI Springs	No	No	Yes	Custom Height			
2299940	2x1	Through Bezel	EMI Springs	Yes	Yes	No	Custom Height			
2299870	2x2	Through Bezel	EMI Springs	Yes	Yes	No	Custom Height			
2299924	2x3	Through Bezel	EMI Springs	Yes	Yes	No	Custom Height			
2170708	1x6	Through Bezel	EMI Springs	Yes	Yes	Yes	Yes	Yes	Yes	
2170734	1x6	Through Bezel	EMI Springs	Yes	Yes	Yes	No	No	No	
2170707	1x6	Through Bezel	EMI Springs	No	No	No	Yes	Yes	Yes	
2170706	1x6	Through Bezel	EMI Springs	No	No	No	No	No	No	
2198373	2x1	Through Bezel	EMI Gasket	0/1			No	No	No	
2227224	2x1	Through Bezel	EMI Gasket	0/1			No	No	No	
2287054	2x1	Through Bezel	EMI Gasket	2			No	No	No	
2227666	2x1	Through Bezel	EMI Springs	0/1			No	No	No	
2227669	2x1	Through Bezel	EMI Springs	0/1			No	No	No	
2227669	2x1	Through Bezel	EMI Springs	2			No	No	No	
2170608	2x1	Through Bezel	EMI Gasket	2**			Thermal Footprint			
2214593	2x2	Through Bezel	EMI Gasket	0/1			No	No	No	
2227225	2x2	Through Bezel	EMI Gasket	0/1			No	No	No	
2287054	2x2	Through Bezel	EMI Gasket	2			No	No	No	
2227667	2x2	Through Bezel	EMI Springs	0/1			No	No	No	
2227670	2x2	Through Bezel	EMI Springs	0/1			No	No	No	
2289129	2x2	Through Bezel	EMI Springs	2			No	No	No	
2214565	2x3	Through Bezel	EMI Gasket	0/1			No	No	No	
2227226	2x3	Through Bezel	EMI Gasket	0/1			No	No	No	
2287054	2x3	Through Bezel	EMI Gasket	2			No	No	No	
2227668	2x3	Through Bezel	EMI Springs	0/1			No	No	No	
2227671	2x3	Through Bezel	EMI Springs	0/1			No	No	No	
2227671	2x3	Through Bezel	EMI Springs	2			No	No	No	
2170610	2x3	Through Bezel	EMI Gasket	1/2**			Thermal Footprint			

Part Number 1551920-2: zQSFP+ Surface Mount Connector for use with all 1xN cages

Notes:

C = Customer Applied Gasket
 1xN cages: require a SMT connector to complete the assembly
 2xN cages: connectors and cages come as one integrated assembly
 All cages use EMI Plug 1888810-2

Accessories

Type	Description	Part Number(s)
Surface Mount Connector	zQSFP+ SMT connector (For use with all 1xN cages)	1551920-2
Behind Bezel	1x1 Heat Sink Clip	2007304-5
	1xN Heat Sink Clip	2227644-3, -4, -6
	1x1 Single Lightpipe	2173481-1
	1xN Single Lightpipe	2173482-1, -2, -3, -7
Through Bezel	1x1 Heats Sink Clip	2007304-5
	1xN Heat Sink Clip	2227644-3, -4, -6
	1x1 Single Lightpipe	2170720-1
	1x1 Dual Lightpipe	2170762-1
	1x1 Quad Lightpipe	2170777-1
	1xN Single Lightpipe	2170720-1
	1xN Dual Lightpipe	2170761-1
1xN Quad Lightpipe	2170762-1	

Specifications

1xN zQSFP+

- Cage and Connector Product Spec: 108-19428
- SMT Connector Application Spec: 114-32022
- Cage Assembly Applications Spec: 114-32023

2xN Stacked zQSFP+

- Product Spec: 108-60102
- Application Spec: 114-60015

Direct Attach Copper Cable Assemblies

TE's QSFP28 passive copper cable assembly features eight differential copper pairs, providing four data transmission channels at speeds up to 28 Gbps per channel, and meets 100G Ethernet, 25G Ethernet and InfiniBand Enhanced Data Rate (EDR) requirements.

Offered in a broad range of wire gages - from 26AWG through 33AWG - this 100G copper cable assembly features low insertion loss and low cross talk. This next generation cable assembly shares the same mating interface with QSFP+ form factors, making it backward compatible with existing QSFP ports. QSFP28 can be used with current 10G and 14G applications with substantial signal integrity margin.

In addition to 100G to 100G straight cables, TE offers break out assemblies with a 100G QSFP28 module on one end breaking out to four 25G SFP28 or two 50G QSFP28 modules on the opposite end of the assembly.



Features and Benefits

- Compatible with IEEE 802.3bj, IEEE 802.3by and InfiniBand EDR
- Supports aggregate data rates of 100Gbps
- Optimized construction to minimize insertion loss and cross talk
- Customized 360° cable braid termination limits EMI radiation
- Backward compatible with existing QSFP+ connectors and cages
- Pull-to-release slide latch design
- 26AWG through 33AWG cable
- Straight and breakout assembly configurations available
- Customizable EEPROM mapping for cable signature
- RoHS compliant

Base Part Number	Description	AWG	Dash to Length (meters)				
			1	2	3	4	5
2829040	InfiniBand EDR	33	-2				
		30	-4	-6			
		26		-7	-8		
2231368	100G Ethernet	33	-16	-18			
		30	-1	-2	-8		
		28			-3	-21	
		26		-14	-7	-4	-12
2821033	QSFP28 Break out to 4x SFP28	33	-8				
		30	-1	-10	-2		
		28			-4		
		26			-12	-5	-3
2821309	QSFP28 Break out to 2x QSFP28	33	-7				
		30	-1	-2	-4		
		28			-8		
		26		-5	-3		-9

Contact your TE Representative for customized lengths.

Frequently Asked Questions

What data rate does zQSFP+ support?

zQSFP+ provides four data transmission channels at speeds up to 28 Gbps per channel, and meets 100G Ethernet (4x28Gbps) and InfiniBand Enhanced Data Rate (EDR) requirements.

Is TE's footprint compatible with other suppliers?

TE's behind bezel cages are not compatible with all sources. TE through bezel 1xN and stacked products are footprint compatible and dual sourced with Molex, LLC. zQSFP+ connectors and cages are designed to meet SFF-8662.

Are heat sinks available?

Yes, TE offers a generous portfolio of heat sink heights and styles, as well as custom heat sinks upon request.

Is application tooling required?

Single port cage assemblies require only flat-rock tooling, while 1xN and stacked assemblies normally require specific application tooling.

For More Information

TE Technical Support Center

USA:	1.800.522.6752
Canada:	1.905.475.6222
Mexico:	52.0.55.1106.0800
Latin/S. America:	54.0.11.4733.2200
Germany:	49.0.6251.133.1999
UK:	44.0.800.267666
France:	33.0.1.3420.8686
Netherlands:	31.0.73.6246.999
China:	86.0.400.820.6015

te.com/products/qsfp

© 2017 TE Connectivity Ltd. family of companies. All Rights Reserved.

TE Connectivity, TE Connectivity (logo) and Every Connection Counts are trademarks. zQSFP+ is a part of the ZXP* family of connectors and uses ZXP technology. ZXP is a trademark of Molex, LLC.

5-1773463-O DND 01/2017

While TE has made every reasonable effort to ensure the accuracy of the information in this brochure, TE does not guarantee that it is error-free, nor does TE make any other representation, warranty or guarantee that the information is accurate, correct, reliable or current reserves the right to make any adjustments to the information contained herein at any time without notice. TE expressly disclaims all implied warranties regarding the information contained herein, including, but not limited to, any implied warranties of merchantability or fitness for a particular purpose. The dimensions in this catalog are for reference purposes only and are subject to change without notice. Specifications are subject to change without notice. Consult TE for the latest dimensions and design specifications.