



Chipsmall Limited consists of a professional team with an average of over 10 year of expertise in the distribution of electronic components. Based in Hongkong, we have already established firm and mutual-benefit business relationships with customers from,Europe,America and south Asia,supplying obsolete and hard-to-find components to meet their specific needs.

With the principle of “Quality Parts,Customers Priority,Honest Operation,and Considerate Service”,our business mainly focus on the distribution of electronic components. Line cards we deal with include Microchip,ALPS,ROHM,Xilinx,Pulse,ON,Everlight and Freescale. Main products comprise IC,Modules,Potentiometer,IC Socket,Relay,Connector.Our parts cover such applications as commercial,industrial, and automotives areas.

We are looking forward to setting up business relationship with you and hope to provide you with the best service and solution. Let us make a better world for our industry!



Contact us

Tel: +86-755-8981 8866 Fax: +86-755-8427 6832

Email & Skype: info@chipsmall.com Web: www.chipsmall.com

Address: A1208, Overseas Decoration Building, #122 Zhenhua RD., Futian, Shenzhen, China



Fluke tools are designed to help **KEEP YOU SAFE** in dangerous environments

Potentially explosive atmospheres can be found in a variety of manufacturing environments from chemical or pharmaceutical processing, to oil refineries—or any environment where flammable material (gas or dust/particulates) are present. Fluke’s intrinsically safe test tools can be used to help you perform maintenance and calibration tasks in potentially explosive and hazardous classified areas. Learn about the importance of intrinsic safety on the job and industries that commonly use intrinsically safe tools.



Fluke offers the widest range of reliable, accurate and intrinsically safe test tools. Including true-rms multimeters, infrared thermometers, process calibrators, pressure calibrators, loop calibrators and precision pressure test gauges.



Fluke 725Ex
Multifunction
Process Calibrator



Fluke 28II Ex
True-rms Industrial
Multimeter



Fluke 721Ex
Precision Pressure
Calibrator



Fluke 718Ex
Pressure
Calibrator



Fluke 707Ex
Loop Calibrator



Fluke 700PEX
Pressure Modules



Fluke 568 Ex
Infrared
Thermometer



700G Series
Precision Pressure
Test Gauges



1551/1552 "Stik"
Thermometers

Fluke intrinsically safe products help to keep you safe on the job

“Intrinsically Safe” or I.S. is a protection method employed in potentially explosive atmospheres or in industries like petro-chemical, oil platforms and refineries, pharmaceutical and pipelines. Certified I.S. tools are designed to prevent the release of sufficient energy to cause ignition of flammable material. I.S. standards apply to all equipment that can create one or more of a range of defined potential explosion sources:

- Electrical sparks, arcs
- Flames
- Hot surfaces
- Static electricity
- Electromagnetic radiation
- Chemical reactions
- Mechanical impact, friction
- Compression ignition
- Acoustic energy
- Ionizing radiation

For more information on these ATEX-compliant tools designed for tough process maintenance and calibration tasks, visit www.fluke.com/ex

Fluke 721Ex Precision Pressure Calibrators

Best suited for:



- Gas flow custody transfer

Features:

- IECEx and ATEX Ex ia IIB T3 Gb (Ta = -10 °C to +45 °C) compliant
- ATEX KEMA 10 ATEX 0168X compliant
- IECEx II 2 G IECEx CSA 10.0013X compliant
- Two isolated, stainless steel, pressure sensors with 0.025 % accuracy
- Pt100 RTD input for temperature measurement, (probe optional)
- Measures 4 to 20 mA signals



Fluke 700PEX Pressure Modules

Best suited for:



- Use with the Fluke 725Ex Multifunctional Process Calibrator and Fluke 718Ex Pressure Calibrator to cover the most commonly used pressure calibration ranges from 0-25 mbar up to 0-200 bar

Features:

- I.S. Class I Div 1 Groups A-D T4, Ta = 0 °C to +50 °C
- ATEX II 1G Ex ia IIC T4 compliant
- Very high accuracy up to 0.025 %



1551/1552 “Stik” Thermometers

Best suited for:



- Daily checks of working thermometers
- Custody transfer temperature determination, PET calibration, LIG calibration, temperature transmitter calibration and verification

Features:

- ATEX II 2 G Ex ib IIB T4 Gb, Ta -10 °C to 50 °C; 1551A range: -50 °C to 160 °C (-58 °F to 320 °F); 1552A range: -80 °C to 300 °C (-112 °F to 572 °F)
- Accuracy (1 year): ± 0.05 °C (± 0.09 °F)
- Easy data logging available with 1552A



Fluke 725Ex Multifunction Process Calibrator

Best suited for:



- Calibrating virtually any process parameter

Features:

- Class I Div 1 Groups B-D 171 °C
- ATEX II IG Ex ia IIB 171 °C compliant
- Measure, source or simulate volts dc, mA, RTDs, thermocouples, frequency and ohms
- 2-channel simultaneous source and measure capability for calibration of transmitters
- Internal loop supply to power transmitters
- Store frequently-used test setups for later use
- Pressure measurement to 200 bar and pressure switch test using any of the 8 Fluke 700PEX pressure modules



Fluke 718Ex Pressure Calibrator

Best suited for:



- Pressure measurements and calibration with internal sensor at pressure ranges of 2, 7 and 20 bar

Features:

- Class I Div 1 Groups A-D T4 compliant
- ATEX II IG Ex ia IIC T4 compliant
- Built-in pressure/vacuum hand pump, with vernier and bleed valve
- Pressure measurement to 200 bar using any of the 8 Fluke 700PEX Pressure Modules
- Pressure measurement to 0.05 % of full scale using internal pressure sensor
- Pressure switch test function



Fluke 707Ex Loop Calibrator

Best suited for:

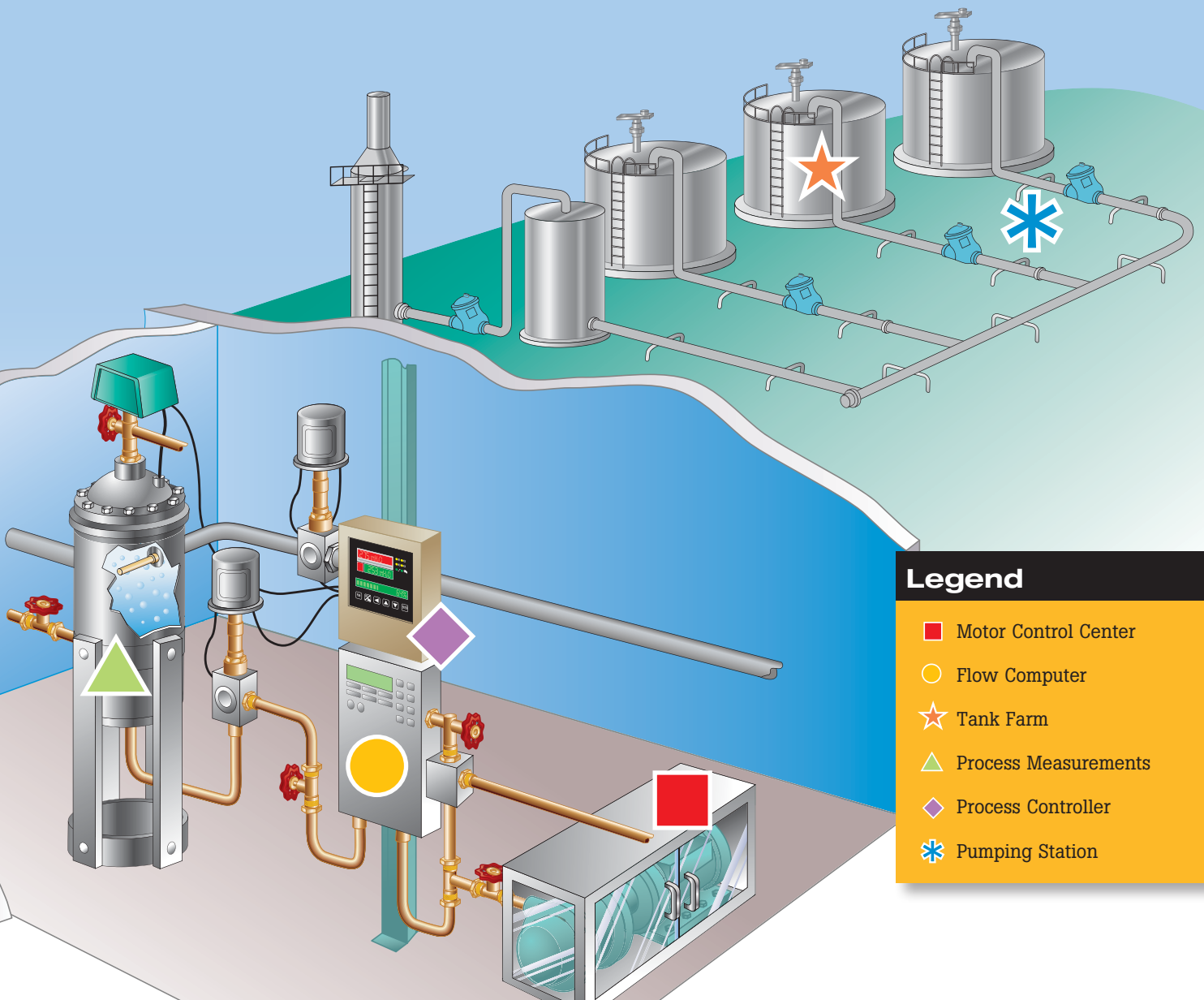


- Calibration and maintenance of 4 to 20 mA control loop

Features:

- F.M. Class I Div 2 Groups A-D T4
- ATEX II 2G Ex ia IIC T4 compliant
- Simultaneous mA and % readout for quick, easy interpretation of readings
- mA accuracy of 0.015 %, superior to other loop calibrators
- Pushbutton with 25 % steps for fast, easy linearity checks
- 0 and 100 % ‘span check’ for fast confirmation of zero and span





Legend

- Motor Control Center
- Flow Computer
- ★ Tank Farm
- ▲ Process Measurements
- ◆ Process Controller
- ✱ Pumping Station

700G Series Precision Pressure Test Gauges

Best suited for:



- Precision pressure measurement from 0 inH₂O/20 mbar to 10,000 psi/690 bar and absolute pressure measurement

Features:

- CSA; Class 1, Div 2, Groups A-D rating
- ATEX rating: II 3 G Ex nA IIB T6
- Accuracy to 0.05 % of full scale
- Reference class gauge accuracies to 0.04 % of reading
- Log up to 8,493 pressure measurements to memory



Fluke 568 Ex Intrinsically Safe Infrared Thermometer

Best suited for:



- Taking spot, differential or scanning temperature measurements where flammable gases or vapors may be present

Features:

- Class I Div 1 and Div 2 or Zone 1 and 2 hazardous environments
- ATEX/IECEX, NEC-500/NEC-505, PCEC, INMETRO, GOST certified
- Enhanced 50:1 distance to spot ratio
- Displays Min/Max/DIF/AVG measurements
- Adjustable emissivity
- Log up to 99 measurements
- Compatible with mini-connector K-type thermocouple (KTC) probe



Fluke 28II Ex True-rms Industrial Multimeter

Best suited for:



- Solving problems on motor drives, in plant automation, power distribution and electromechanical equipment

Features:

- Class I Div 1 Groups A-D
- ATEX II 2 G Ex ia IIC T4 Gb
- ATEX II 2 D Ex ia IIIC T130C Db
- ATEX I M1 Ex ia I Ma
- Low voltage troubleshooting in hazardous areas
- Built-in thermometer allows you to take temperature readings
- Large digit display with bright, two-level
- IP67 rated, waterproof and dustproof



Making sense of the product rating systems



Each approved intrinsically safe device is rated to ATEX, NEC, FM or other country standards. The corresponding rating system allows you to understand which zones, type of protection, gas groups and temperature classes the instrument is approved for.

ATEX Example

Fluke 707Ex is  ATEX Compliant II 2 G Ex ia IIC T4




The ATEX examination mark is required on all devices for use in European hazardous areas.

ATEX Markings

II 2 G	The classification of zones. "II" designates the tool is approved for all non-mining areas. "2" represents the category of the device, in this case the device is rated for the second most hazardous areas. "G" designates atmosphere, in this case gas, vapors and mist.
Ex	Explosion protection based on European Ex-regulations.
ia	The type of protection from explosion, in this case the energy in a device or connector has been reduced to a safe value.
IIC	Gas Group. "IIC" rating indicates compatibility with the most dangerous gas groups.
T4	Temperature class is the maximum temperature of a surface that may be.

FM Example

Fluke 707Ex is  APPROVED FM-classified N.I. Class I, Div 2, Groups A-D, T4



The Factory Mutual Approved mark.

Factory Mutual Markings

N.I.	Non-incendive apparatus, internal energy is limited so a specified atmosphere cannot be ignited by its use.
Class I	For use with gases, vapors and liquids (not dust, fibers or filings).
Div 2	Certified for use in Zone 2, explosive atmospheres not normally present, may rarely exist for short duration.
Groups A-D	Rated for use with explosive gasses as defined by groups A-D, including acetylene, hydrogen, acetylene and propane.

Fluke. *Keeping your world up and running.*®

Fluke Corporation
PO Box 9090, Everett, WA 98206 U.S.A.

Fluke Europe B.V.
PO Box 1186, 5602 BD
Eindhoven, The Netherlands

For more information call:
In the U.S.A. (800) 443-5853 or
Fax (425) 446-5116
In Europe/M-East/Africa +31 (0) 40 2675 200 or
Fax +31 (0) 40 2675 222
In Canada (800)-36-FLUKE or
Fax (905) 890-6866
From other countries +1 (425) 446-5500 or
Fax +1 (425) 446-5116
Web access: <http://www.fluke.com>

©2005-2015 Fluke Corporation.
Specifications subject to change without notice.
Printed in U.S.A. 4/2015 2432675d-en

Modification of this document is not permitted without written permission from Fluke Corporation.