



Chipsmall Limited consists of a professional team with an average of over 10 year of expertise in the distribution of electronic components. Based in Hongkong, we have already established firm and mutual-benefit business relationships with customers from,Europe,America and south Asia,supplying obsolete and hard-to-find components to meet their specific needs.

With the principle of “Quality Parts,Customers Priority,Honest Operation,and Considerate Service”,our business mainly focus on the distribution of electronic components. Line cards we deal with include Microchip,ALPS,ROHM,Xilinx,Pulse,ON,Everlight and Freescale. Main products comprise IC,Modules,Potentiometer,IC Socket,Relay,Connector.Our parts cover such applications as commercial,industrial, and automotives areas.

We are looking forward to setting up business relationship with you and hope to provide you with the best service and solution. Let us make a better world for our industry!



## Contact us

Tel: +86-755-8981 8866 Fax: +86-755-8427 6832

Email & Skype: info@chipsmall.com Web: www.chipsmall.com

Address: A1208, Overseas Decoration Building, #122 Zhenhua RD., Futian, Shenzhen, China

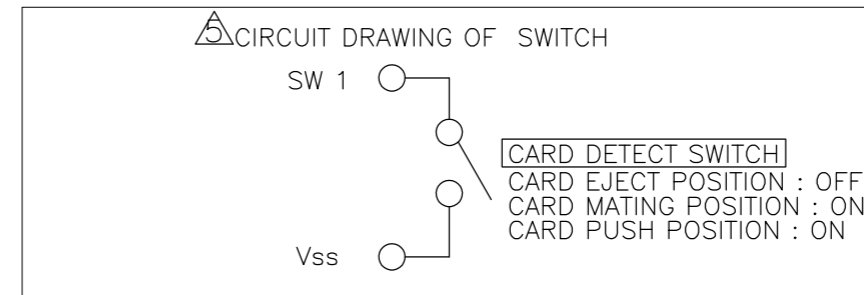
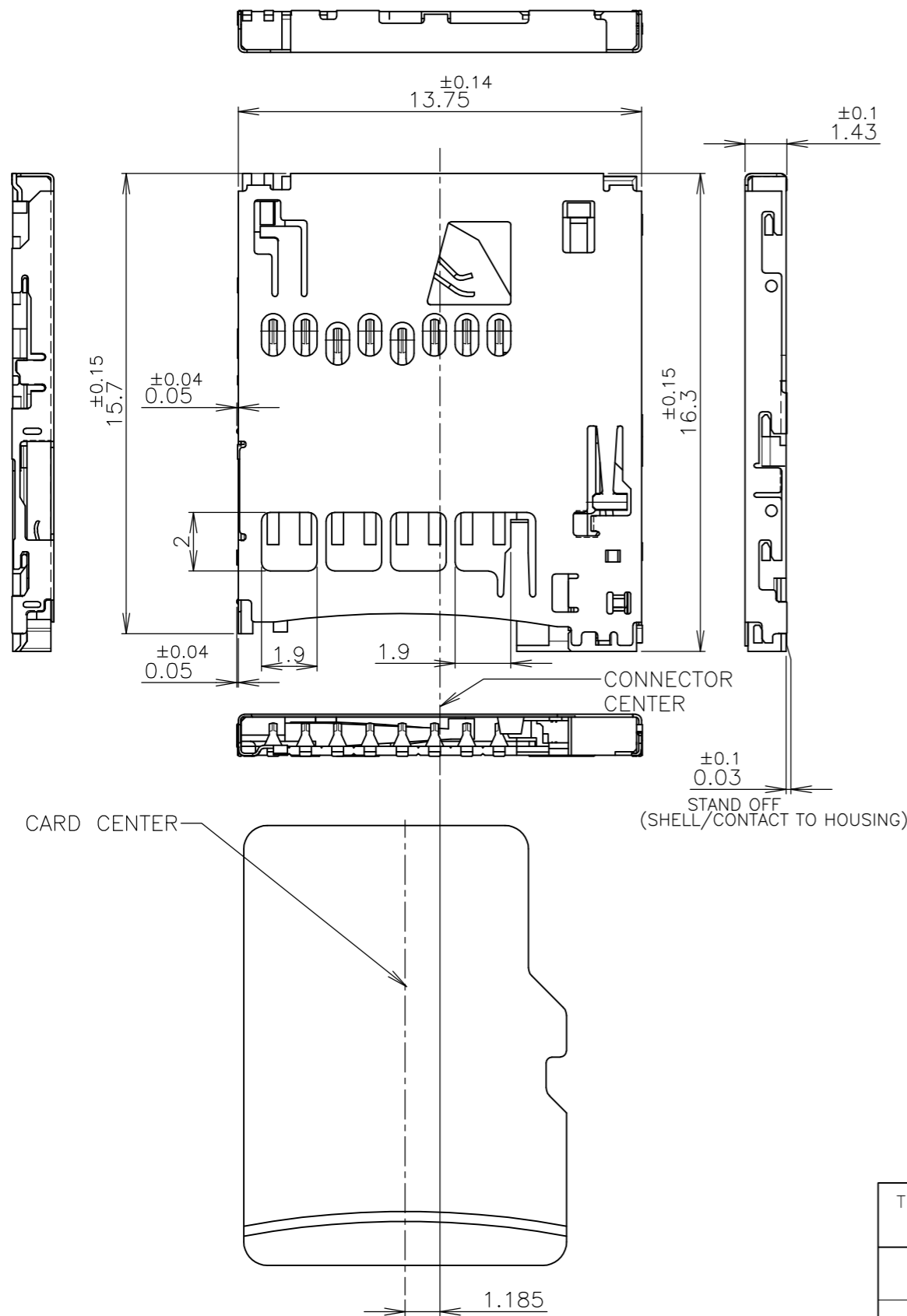


LOC	DIST	REVISIONS				
P	LTR	DESCRIPTION	DATE	DWN	APVD	
J	/	A	RELEASED	01DEC09	J.T	Y.N

NOTE  
 1.MATERIAL HOUSING,SLIDER : THERMOPLASTIC RESIN  
 UL94V-0, COLOR;BLACK  
 CONTACT : COPPER ALLOY  
 SHELL : COPPER ALLOY  
 COIL : SWP  
 CAM ROD : STAINLESS STEEL  
 HOOK SPRING : STAINLESS STEEL

2 FINISH CONTACT : Ni UNDER PL  
 Au PL AT CONTACT AREA  
 Au PL AT SOLDERING AREA  
 SHELL : Ni UNDER PL  
 Au PL AT SOLDERING AREA

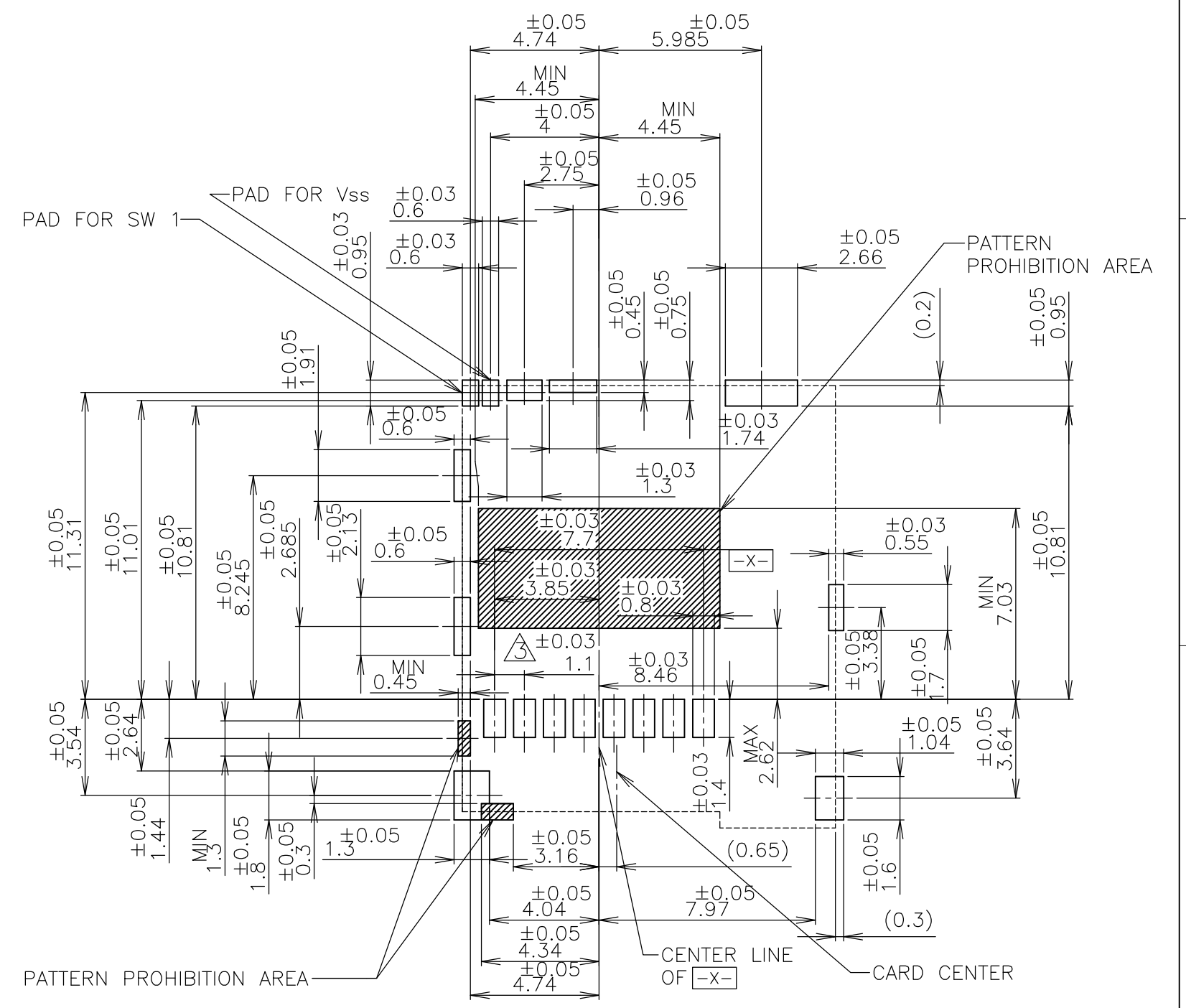
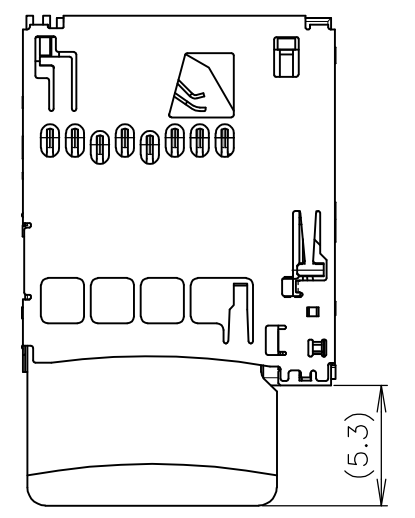
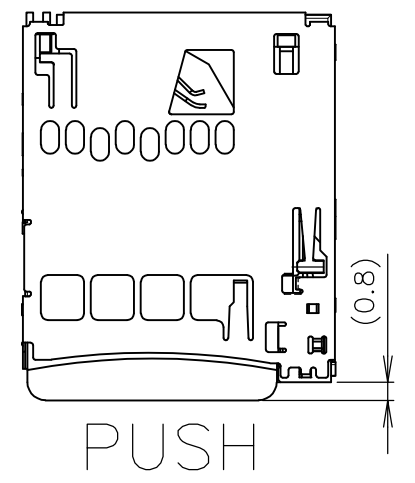
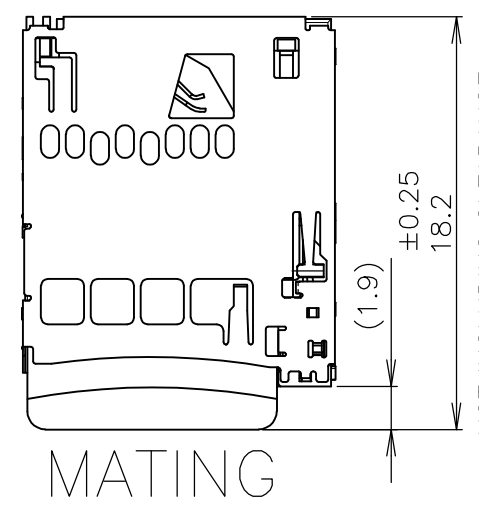
△ NON-CUMULATIVE TOLERANCE  
 4. COPLANARITY IS 0.1MAX.  
 △ CIRCUIT DRAWING OF SWITCH.  
 6. OVERALL TOLERANCE:±0.1



THIS DRAWING IS A CONTROLLED DOCUMENT.		DWN J.TSUJI 01DEC2009	Tyco Electronics AMP K.K. Kawasaki,Japan	
DIMENSIONS: MM		CHK Y.NAKAZAWA 01DEC2009	MICRO SD WITH SWITCH PUSH-PUSH TYPE CI-1	
TOLERANCES UNLESS OTHERWISE SPECIFIED:		APVD Y.NAKAZAWA 01DEC2009	NAME	
0 PLC ± -		PRODUCT SPEC 108-78680	SIZE CAGE CODE DRAWING NO RESTRICTED TO	
1 PLC ± -		APPLICATION SPEC	A3 00779 C-1554304	
2 PLC ± -		WEIGHT 0.31g	SCALE 5:1 SHEET 1 OF 3 REV A	
3 PLC ± -		CUSTOMER DRAWING		
4 PLC ± -				
ANGLES ± -				
FINISH				
1554304-1	MATERIAL			
PART NUMBER				

THIS DRAWING IS UNPUBLISHED. RELEASED FOR PUBLICATION APR , 2009.  
 © COPYRIGHT 2009 BY TYCO ELECTRONICS CORPORATION. ALL RIGHTS RESERVED.

LOC	DIST	REVISIONS			
P	LTR	DESCRIPTION	DATE	DWN	APVD
J	/	SEE SHEET 1	-	-	-

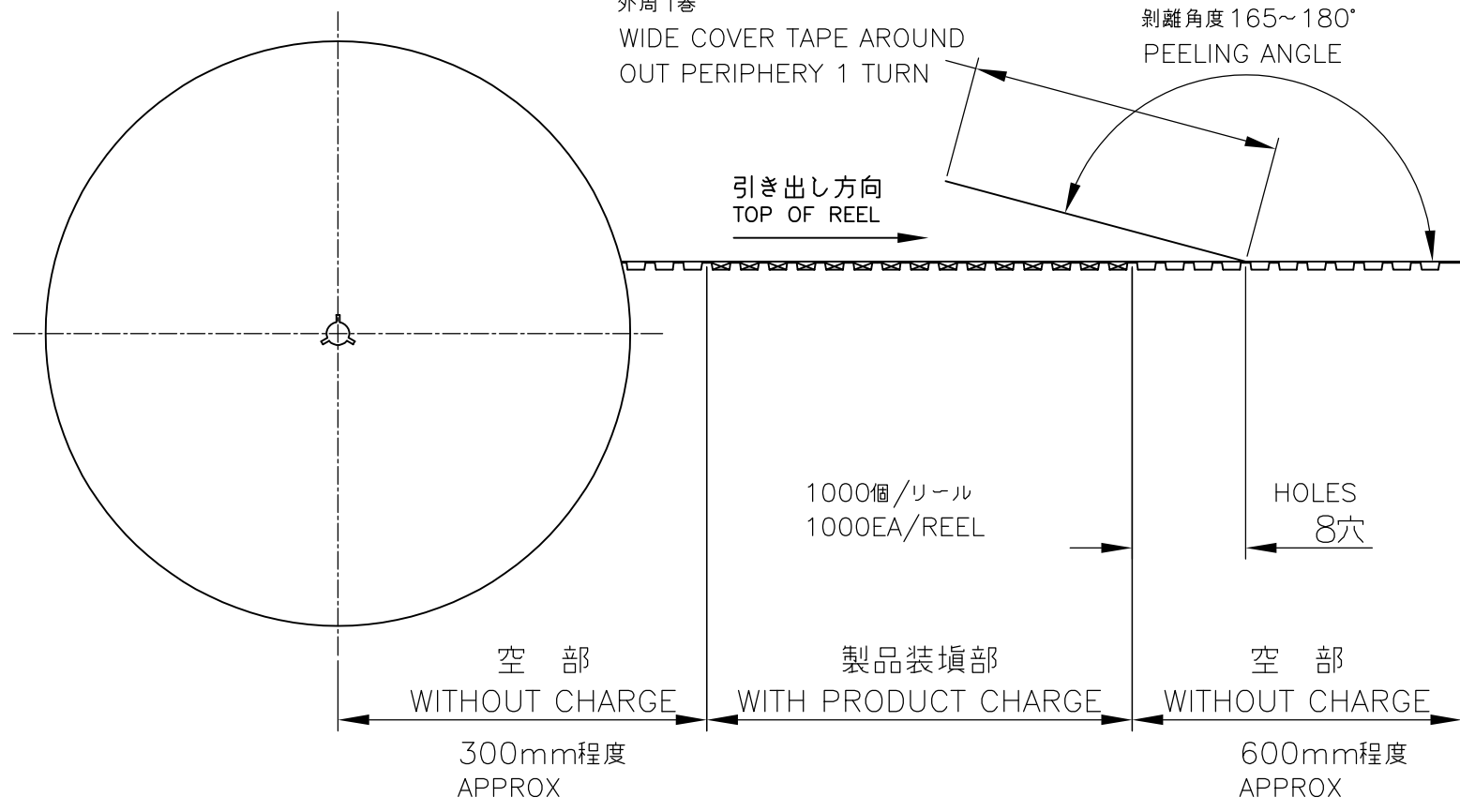
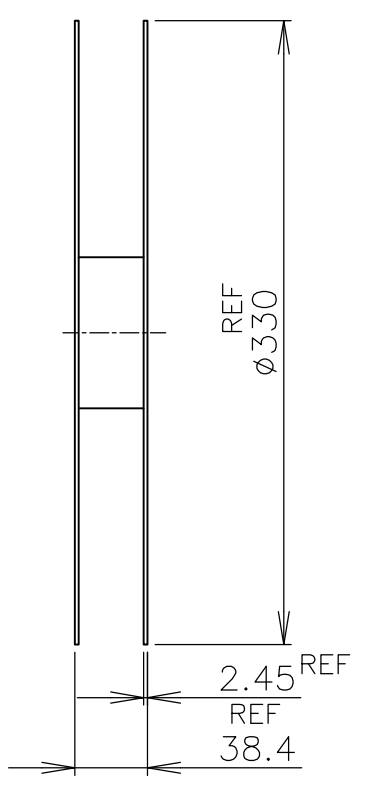
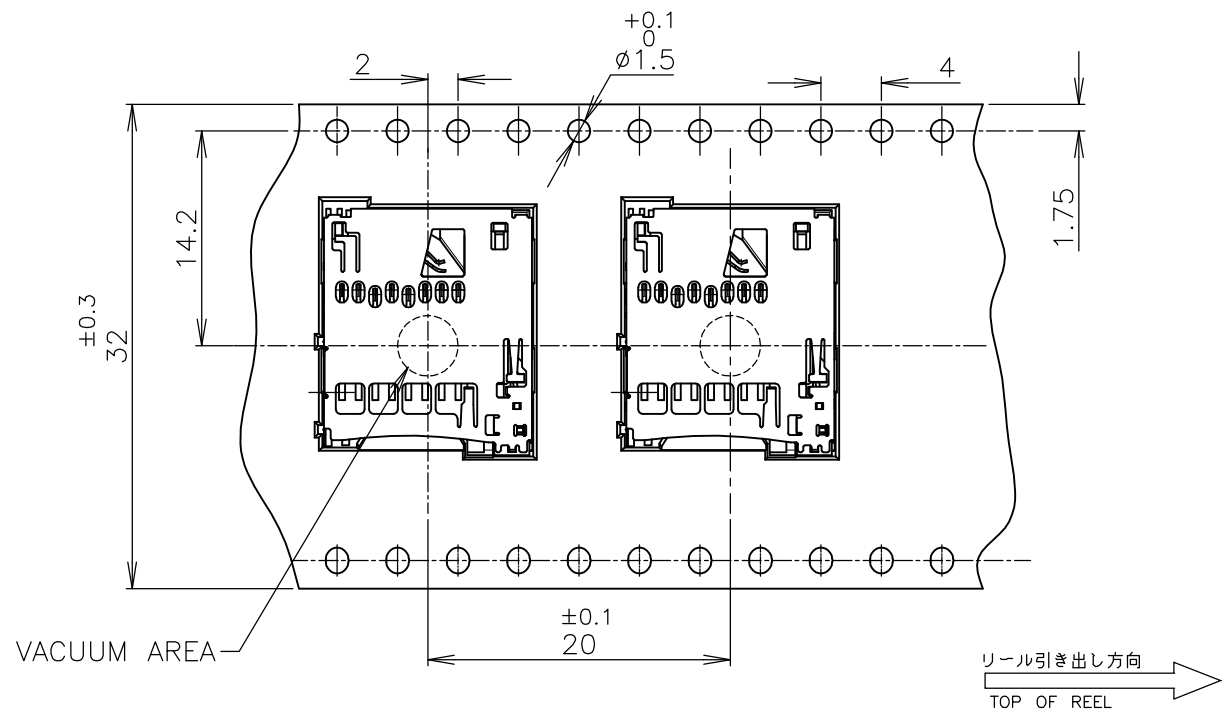


PCB LAYOUT(REFERENCE)  
 (VIEWED FROM CONNECTOR MOUNT SIDE)

THIS DRAWING IS A CONTROLLED DOCUMENT.		DWN	-	Tyco Electronics		Tyco Electronics AMP K.K.	
DIMENSIONS: MM		CHK	-	NAME		Kawasaki.Japan	
TOLERANCES UNLESS OTHERWISE SPECIFIED:		APVD	-	PRODUCT SPEC		MICRO SD WITH SWITCH	
0 PLC ± -		-		APPLICATION SPEC		PUSH-PUSH TYPE CI-1	
1 PLC ± -		-		SIZE	CAGE CODE	DRAWING NO	RESTRICTED TO
2 PLC ± -		-		A3	00779	C-1554304	-
3 PLC ± -		-		CUSTOMER DRAWING		SCALE	SHEET
4 PLC ± -		-		-		2:1	2 OF 3
ANGLES ± -		-		-		REV	A
FINISH		-		-		-	

THIS DRAWING IS UNPUBLISHED. RELEASED FOR PUBLICATION APR , 2009.  
 © COPYRIGHT 2009 BY TYCO ELECTRONICS CORPORATION. ALL RIGHTS RESERVED.

LOC		DIST		REVISIONS			DATE	DWN	APVD
P	LTR	DESCRIPTION							
		SEE SHEET 1			-	-	-	-	



THIS DRAWING IS A CONTROLLED DOCUMENT.		DWN	Tyco Electronics AMP K.K.		
		CHK	Kawasaki.Japan		
DIMENSIONS: MM		APVD	NAME		
TOLERANCES UNLESS OTHERWISE SPECIFIED:		PRODUCT SPEC	MICRO SD WITH SWITCH PUSH-PUSH TYPE CI-1		
MATERIAL		APPLICATION SPEC	SIZE	CAGE CODE	DRAWING NO
		WEIGHT	A3	00779	C-1554304
		CUSTOMER DRAWING		SCALE	SHEET
				2:1	3 OF 3
				REV	A