



Chipsmall Limited consists of a professional team with an average of over 10 year of expertise in the distribution of electronic components. Based in Hongkong, we have already established firm and mutual-benefit business relationships with customers from,Europe,America and south Asia,supplying obsolete and hard-to-find components to meet their specific needs.

With the principle of “Quality Parts,Customers Priority,Honest Operation,and Considerate Service”,our business mainly focus on the distribution of electronic components. Line cards we deal with include Microchip,ALPS,ROHM,Xilinx,Pulse,ON,Everlight and Freescale. Main products comprise IC,Modules,Potentiometer,IC Socket,Relay,Connector.Our parts cover such applications as commercial,industrial, and automotives areas.

We are looking forward to setting up business relationship with you and hope to provide you with the best service and solution. Let us make a better world for our industry!



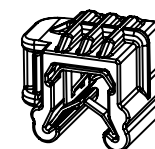
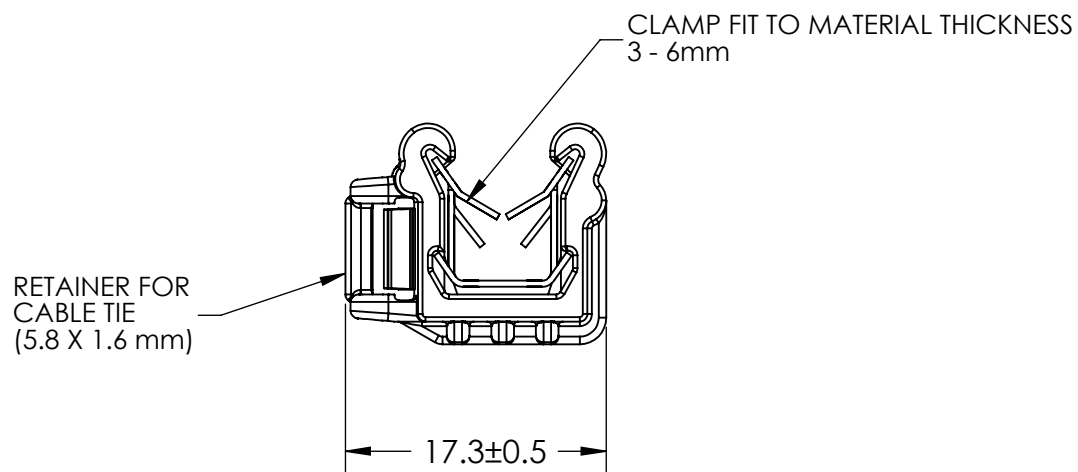
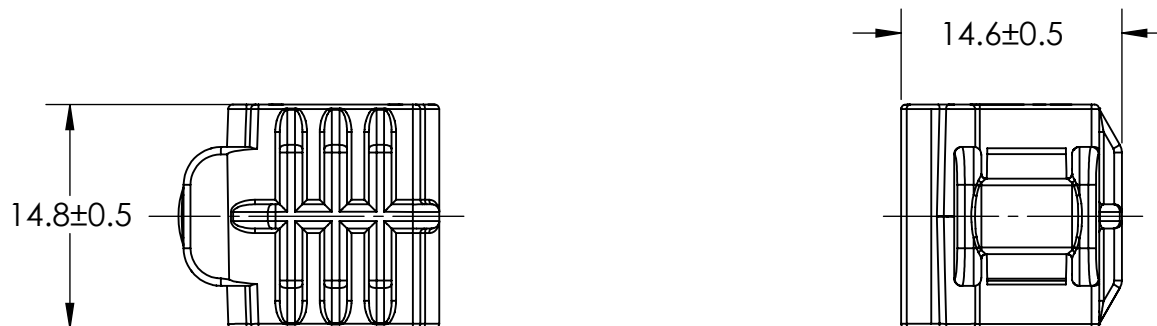
Contact us

Tel: +86-755-8981 8866 Fax: +86-755-8427 6832

Email & Skype: info@chipsmall.com Web: www.chipsmall.com

Address: A1208, Overseas Decoration Building, #122 Zhenhua RD., Futian, Shenzhen, China





SCALE 1:1

IN
V
E
N
T
O
R
S

HellermannTyton

ALL PROPRIETARY RIGHTS IN THE SUBJECT MATTER SHOWN ON THIS DRAWING ARE EXCLUSIVE PROPERTY OF HELLERMANNTYTON

name	date	city, state

RE
V
I
S
I
O
N

level	01
by	AAC
date	07/09/2009
ECN #	001133
part level	-

DI
M
E
N
S
I
O
N
S

TOLERANCES	.xxxx = ±.013
	.xxx = ±.13
	.xx = ±.3
	.x = ±.8
	∠ = ±0.5°
unless otherwise specified	
units	millimeters

P
A
R
T

number	EC24	phase	Production
name	EC24 EDGE CLIP 24		
material	PA66HIRHS		

D
R
A
W
I
N
G

format	AH	CAD	SW 2007	scale	2:1
computer file name	XCL-HTG156CST_01			previous drawing number	
drawn	AAC	checked	KAC	approved	KAC
	07/09/2009		07/09/2009		07/09/2009
type	Customer			sheet 1 of 1	
number	XCL-HTG156CST				