



Chipsmall Limited consists of a professional team with an average of over 10 year of expertise in the distribution of electronic components. Based in Hongkong, we have already established firm and mutual-benefit business relationships with customers from,Europe,America and south Asia,supplying obsolete and hard-to-find components to meet their specific needs.

With the principle of "Quality Parts,Customers Priority,Honest Operation,and Considerate Service",our business mainly focus on the distribution of electronic components. Line cards we deal with include Microchip,ALPS,ROHM,Xilinx,Pulse,ON,Everlight and Freescale. Main products comprise IC,Modules,Potentiometer,IC Socket,Relay,Connector.Our parts cover such applications as commercial,industrial, and automotives areas.

We are looking forward to setting up business relationship with you and hope to provide you with the best service and solution. Let us make a better world for our industry!



## Contact us

Tel: +86-755-8981 8866 Fax: +86-755-8427 6832

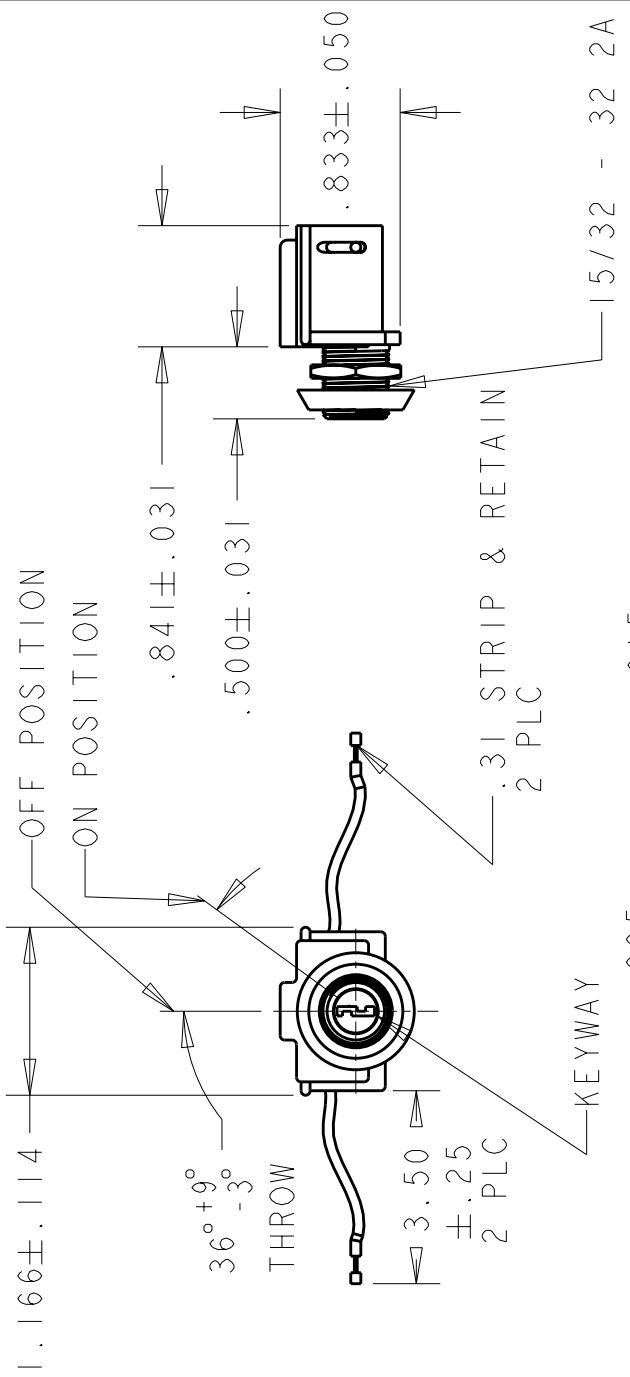
Email & Skype: info@chipsmall.com Web: www.chipsmall.com

Address: A1208, Overseas Decoration Building, #122 Zhenhua RD., Futian, Shenzhen, China



THIS DRAWING IS A CONTROLLED DOCUMENT FOR TYCO ELECTRONICS CORPORATION AND THE CONTROLLING ENGINEERING ORGANIZATION. IT IS SUBJECT TO CHANGE WITHOUT NOTICE. ANY CHANGES SHOULD BE CONTACTED FOR THE LATEST REVISION.

LOC		DIST		REVISIONS			
P	LTR	DESCRIPTION	DATE	DWN	APVD		
A		ECO-06-23628	250CT2006	MB	MW		



.062 ± .005 W X .030 ± .015 D  
 .833 ± .050

NOTES:

- KEY REMOVABLE IN OFF POSITION ONLY.
- KEYSWITCH SUPPLIED WITH 1 HEX NUT, 1 DRESS NUT AND 1 KEY.
- WIRE: 18 AWG BOND WIRE, TINNED, PVC INSULATED, W/ 80°C AND 300 V RATING (UL 1007).  
 CONTACT MATERIAL: MOVABLE-BRONZE, SILVER PLATED;  
 STATIONARY-BRASS, SILVER PLATED.  
 CIRCUIT: SPST  
 ACTION: OFF-ON
- ELECTRICAL SPECIFICATIONS:  
 KEYSWITCH RATING: 6A, 125V AC; 3A, 250V AC  
 DIELECTRIC VOLTAGE: 1000V RMS MIN.  
 INSULATION RESISTANCE: 100 MΩ MIN.  
 CONTACT RESISTANCE: 100 mΩ MAX.  
 CYCLE LIFE: 6000 OPERATIONS MIN.  
 TEMPERATURE RISE: <30°C AT 6000 OPERATIONS
- ENVIRONMENTAL SPECIFICATIONS:  
 OPERATING TEMP: -18°C TO 65°C

THIS DRAWING IS UNPUBLISHED.  
 COPYRIGHT 2006 BY TYCO ELECTRONICS CORPORATION. ALL RIGHTS RESERVED.

DIMENSIONS: INCHES		DWN	12NOV2003	MATERIAL	FINISH	PART NUMBER	
TOLERANCES UNLESS OTHERWISE SPECIFIED:		J.C. YOSLER	07NOV2006			1571487-1	
0 PLC ± .03		CHK	07NOV2006				
1 PLC ± .015		M.WILBOURN	07NOV2006				
2 PLC ± .010		APVD	07NOV2006				
3 PLC ± .010		M.WILBOURN					
4 PLC ±		PRODUCT SPEC					
ANGLES ±1/2		APPLICATION SPEC					
WEIGHT -		NAME	KEYSWITCH, SPST				
CUSTOMER DRAWING		SIZE	CAGE CODE	DRAWING NO	RESTRICTED TO		
A4		00779	C=1571487		-		
SCALE 3:4		SHEET 1	OF 1	REV A			

**tyco**  
**Electronics**  
 Tyco Electronics  
 Harrisburg, PA 17105-3608